

© 2015 RYAN SENATORE ARCHITECTURE

667 CONGRESS STREET
APARTMENTS
PORTLAND, MAINE



RYAN SENATORE
ARCHITECTURE
665 CONGRESS STREET
PORTLAND, MAINE 04101
207-650-6414
senatorearchitecture.com

CONSULTANTS:
STRUCTURAL:
Structural Integrity
77 Oak Street
Portland, ME 04101
207-774-4614

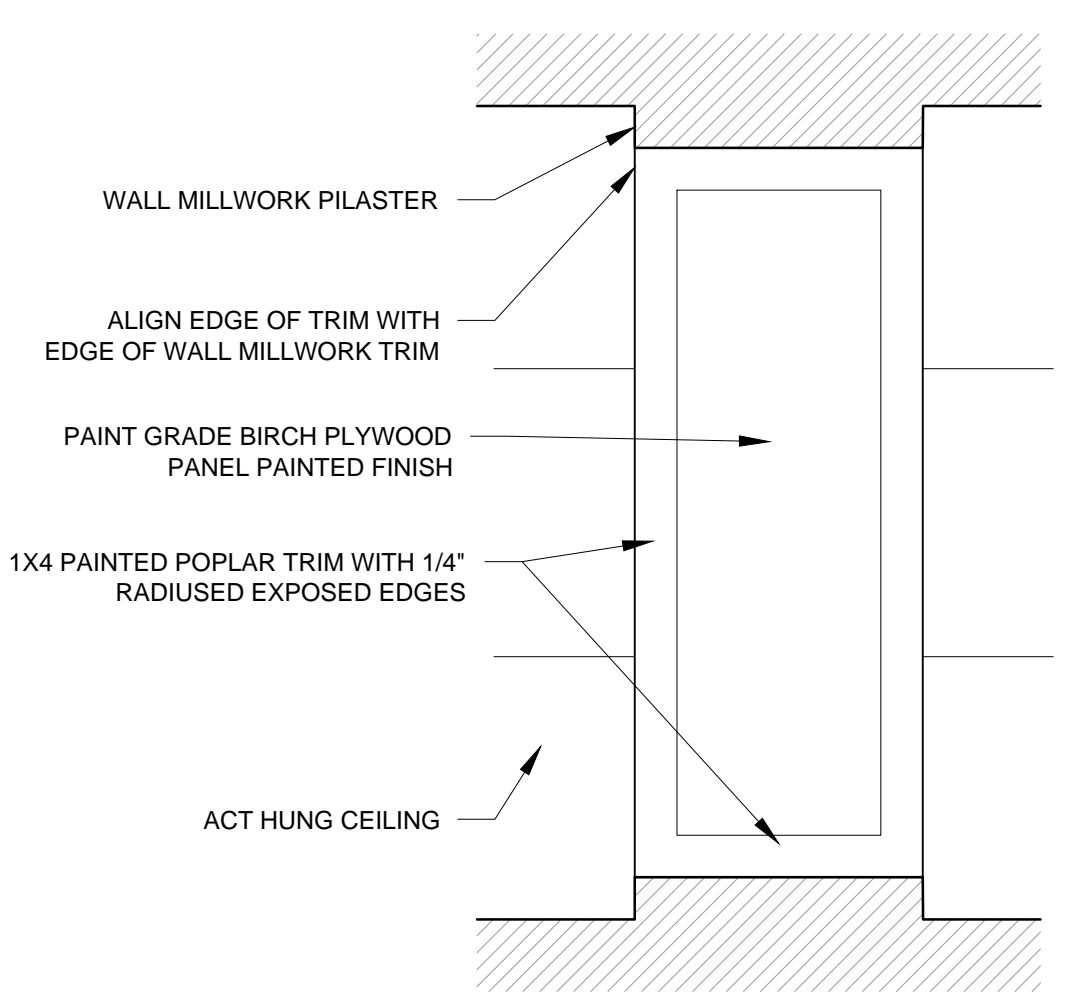
REVISIONS:

DATE: 2 NOVEMBER 2015
PROJECT No. 1503
DRAWN BY: RJS / RRT
CHECKED BY: RJS
SCALE: AS NOTED

SHEET TITLE:
SECOND FLOOR
REFLECTED
CEILING PLAN

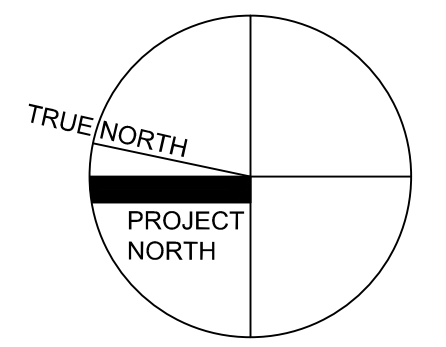
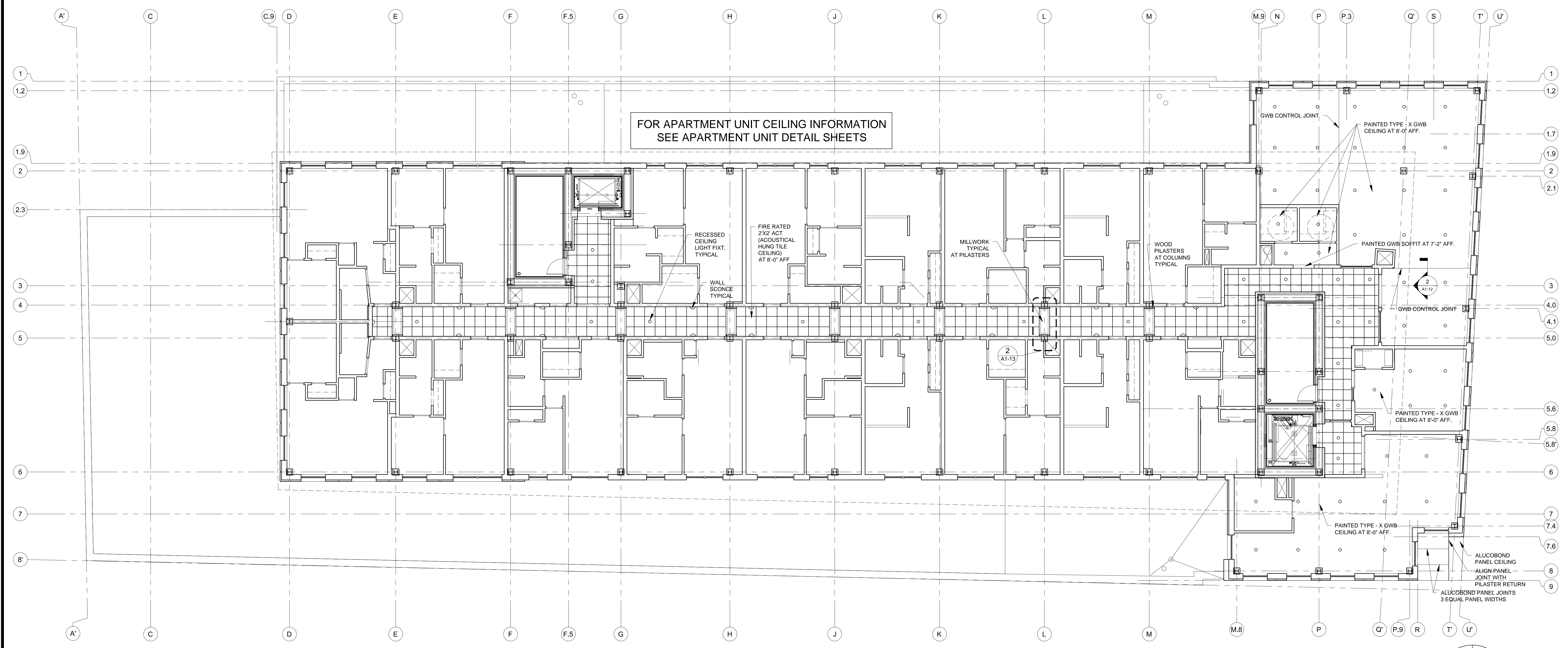
A1-13

- REFLECTED CEILING PLAN NOTES
- 1) G.C. TO COORDINATE LOCATIONS OF PLUMBING CLEAN OUTS AND PROVIDE FIRE RATED ACCESS PANELS AT CEILING
 - 2) G.C. TO PROVIDE ACCESS PANELS AS REQUIRED FOR ALL ELEMENTS (SPRINKLER, VALVES, ETC) NOT SHOWN ON THIS REFLECTED CEILING PLAN
 - 3) G.C. TO PROVIDE METAL FRAMING AND BLOCKING REQUIRED FOR ALL ACCESS PANELS AND CONTROL JOINTS
 - 4) FOR APARTMENT UNIT CEILING INFORMATION SEE APARTMENT UNIT DETAIL SHEETS
 - 5) ALL RECESSED LIGHTING FIXTURES TO HAVE RATED HOUSINGS TO MEET FIRE RATINGS OF CEILING THEY ARE INSTALLED WITHIN



2 MILLWORK CEILING ELEMENT AT PILASTER PLAN DETAIL
3/4" = 1'-0"

FOR APARTMENT UNIT CEILING INFORMATION
SEE APARTMENT UNIT DETAIL SHEETS



LIGHTING SHOWN FOR REFERENCE ONLY SEE ELECTRICAL PLANS FOR LIGHTING LAYOUT

1 SECOND FLOOR REFLECTED CEILING PLAN
1/8\"/>