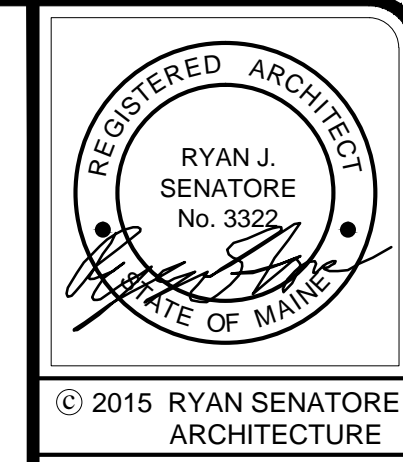
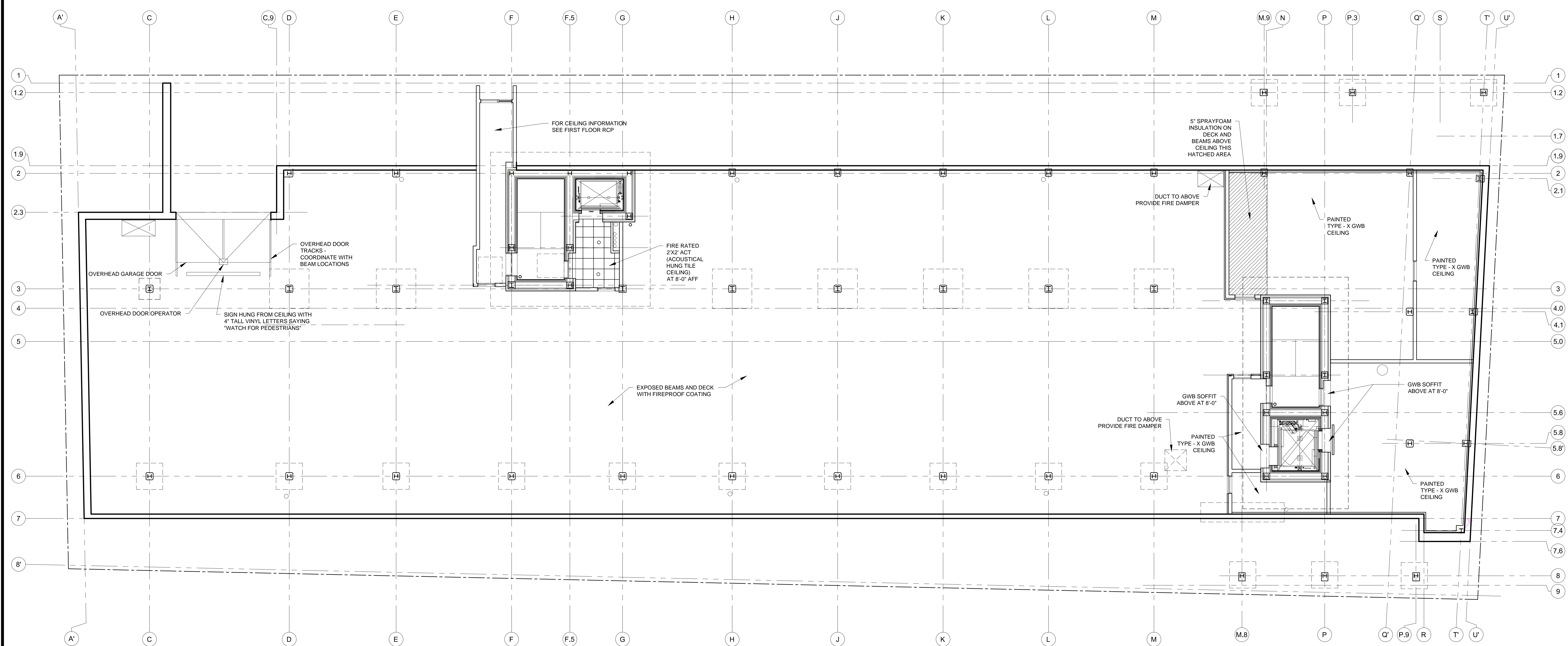


LIGHTING SHOWN FOR REFERENCE ONLY SEE ELECTRICAL PLANS FOR LIGHTING LAYOUT

- REFLECTED CEILING PLAN NOTES
- 1) G.C. TO COORDINATE LOCATIONS OF PLUMBING CLEAN OUTS AND PROVIDE FIRE RATED ACCESS PANELS AT CEILING
  - 2) G.C. TO PROVIDE ACCESS PANELS AS REQUIRED FOR ALL ELEMENTS (SPRINKLER, VALVES, ETC) NOT SHOWN ON THIS REFLECTED CEILING PLAN
  - 3) G.C. TO PROVIDE METAL FRAMING AND BLOCKING REQUIRED FOR ALL ACCESS PANELS AND CONTROL JOINTS
  - 4) FOR APARTMENT UNIT CEILING INFORMATION SEE APARTMENT UNIT DETAIL SHEETS
  - 5) ALL RECESSED LIGHTING FIXTURES TO HAVE RATED HOUSINGS TO MEET FIRE RATINGS OF CEILINGS THEY ARE INSTALLED WITHIN



© 2015 RYAN SENATORE ARCHITECTURE



667 CONGRESS STREET  
APARTMENTS  
PORTLAND, MAINE



RYAN SENATORE  
ARCHITECTURE  
666 CONGRESS STREET  
PORTLAND, MAINE 04101  
207-650-6414  
senatorearchitecture.com

CONSULTANTS:  
STRUCTURAL:  
Structural Integrity  
77 Oak Street  
Portland, ME 04101  
207-774-4614

REVISIONS:

DATE: 2 NOVEMBER 2015  
PROJECT No. 1503  
DRAWN BY: RJS / RRT  
CHECKED BY: RJS  
SCALE: AS NOTED

SHEET TITLE:  
BASEMENT  
REFLECTED  
CEILING PLAN

A1-11