

© 2015 RYAN SENATORE ARCHITECTURE

667 CONGRESS STREET  
APARTMENTS  
PORTLAND, MAINE



RYAN SENATORE  
ARCHITECTURE  
665 CONGRESS STREET  
PORTLAND, MAINE 04101  
207-650-6414  
senatorearchitecture.com

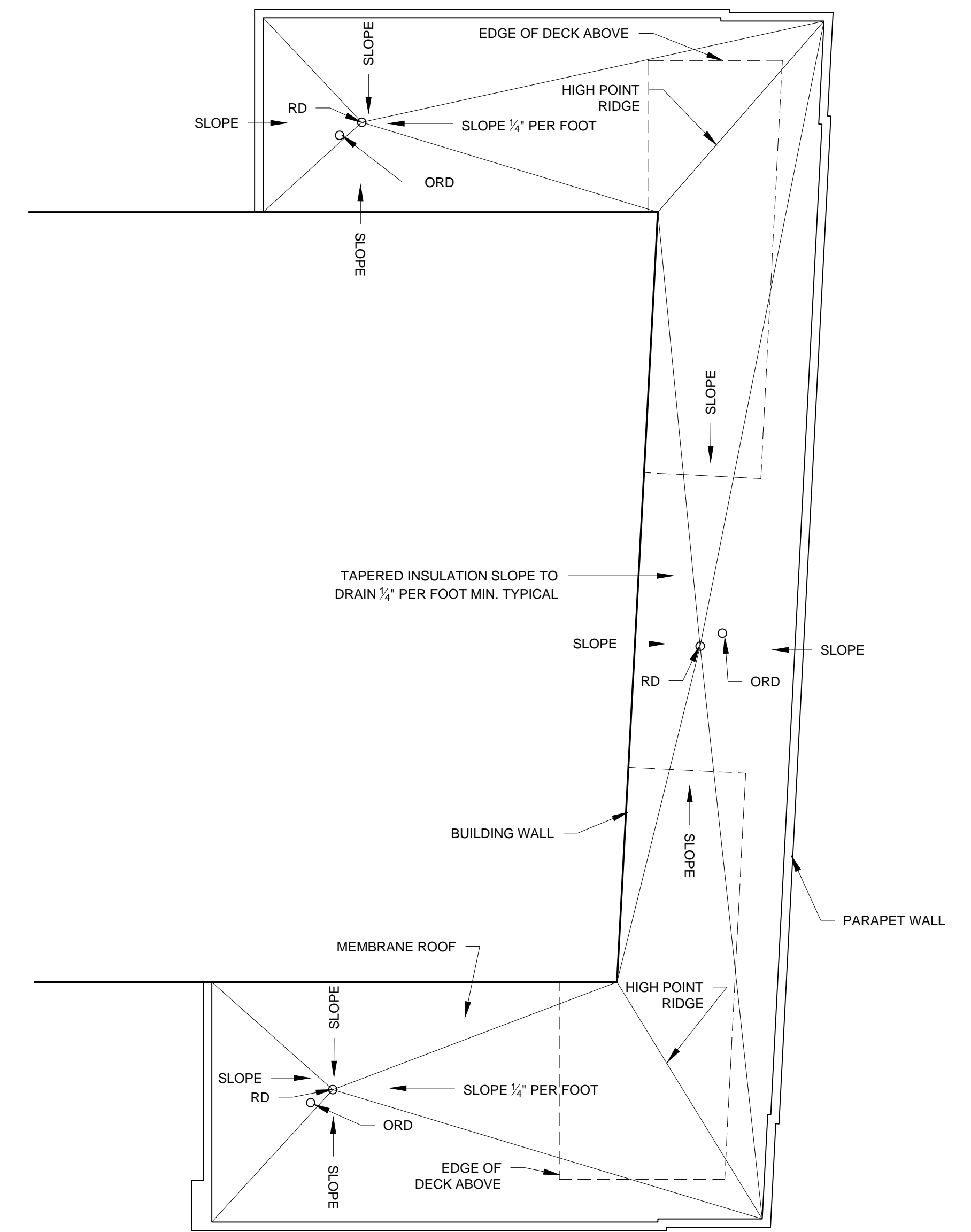
CONSULTANTS:  
STRUCTURAL:  
Structural Integrity  
77 Oak Street  
Portland, ME 04101  
207-774-4614

REVISIONS:

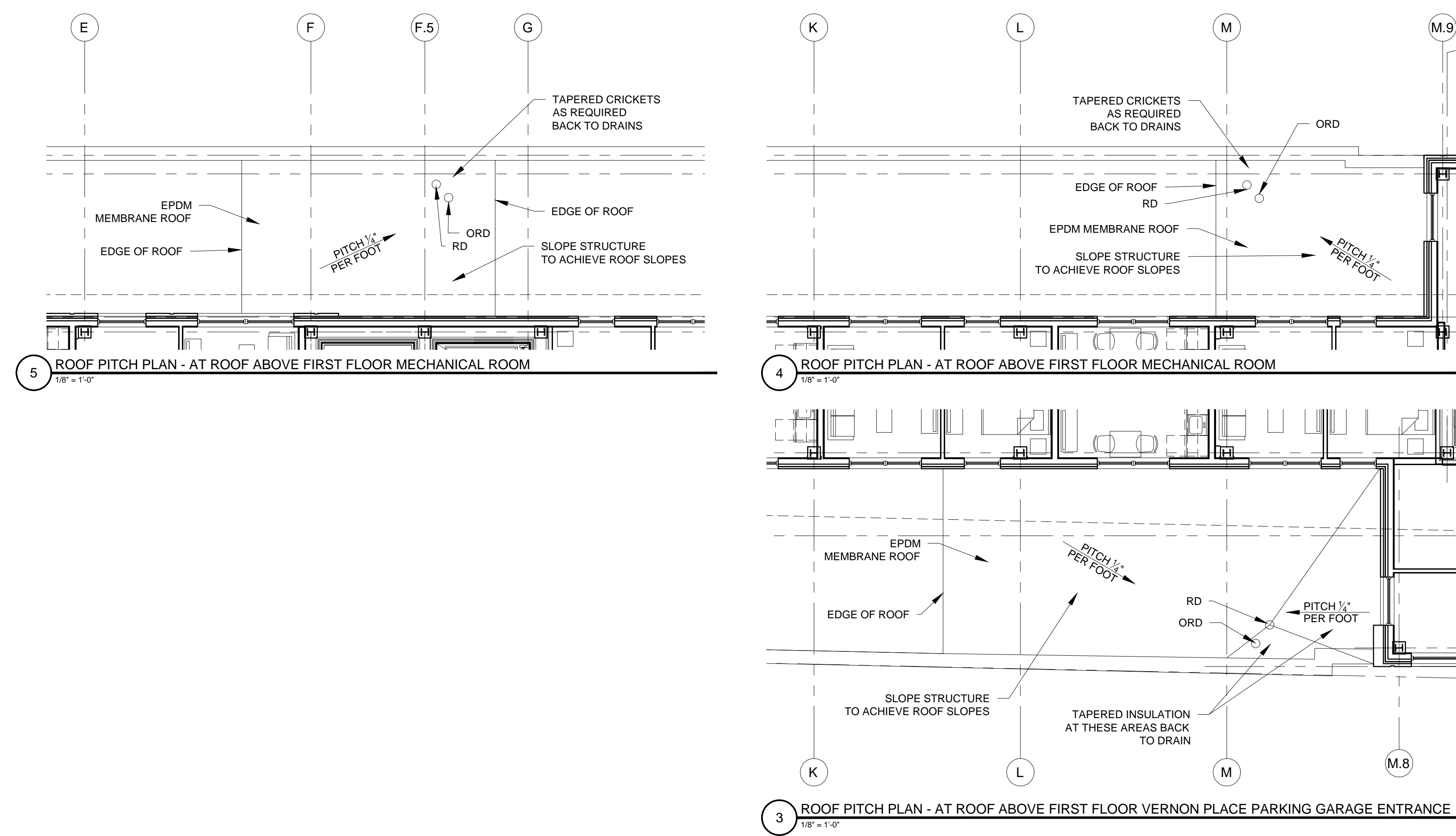
DATE: 2 NOVEMBER 2016  
PROJECT No. 1503  
DRAWN BY: RJS / RRT  
CHECKED BY: RJS  
SCALE: AS NOTED

SHEET TITLE:  
ROOF PITCH PLAN

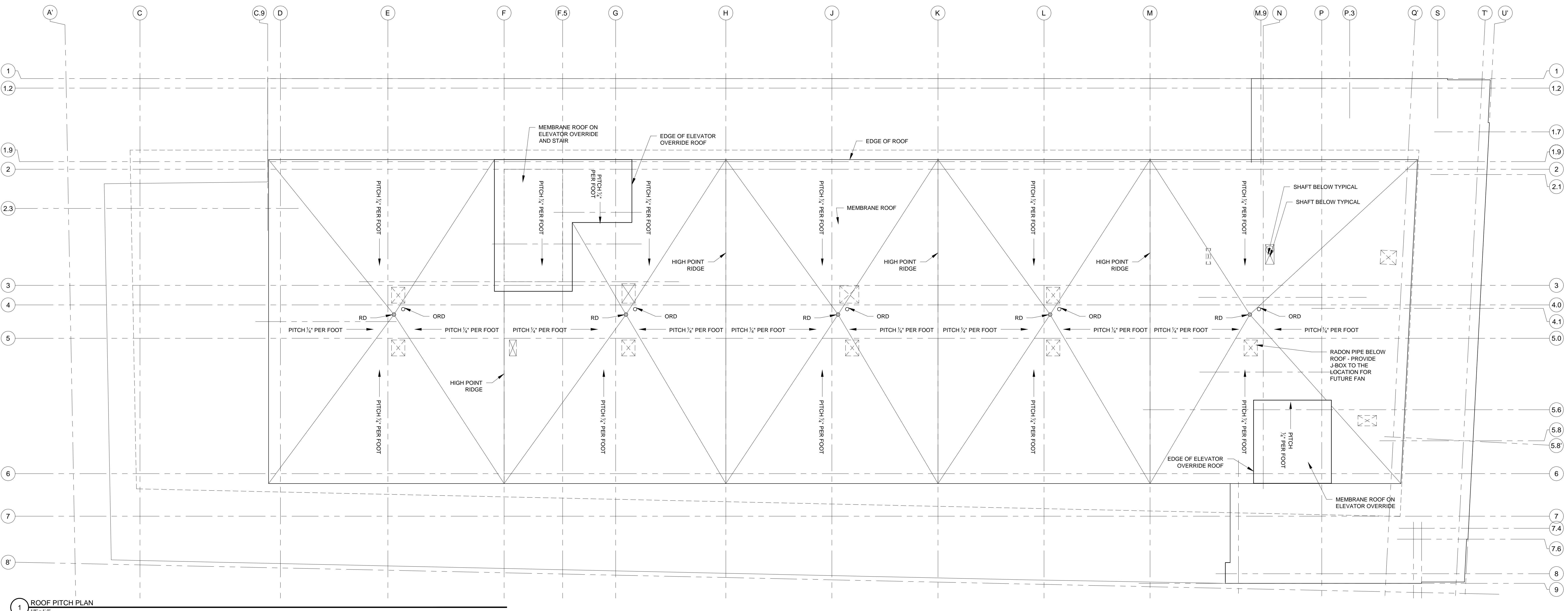
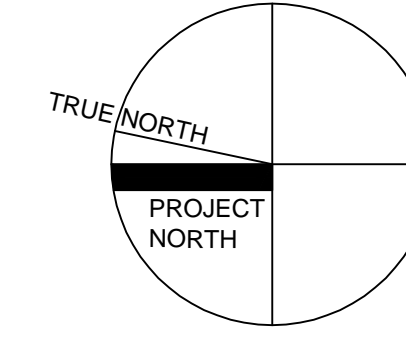
A1-10



2 ROOF PITCH PLAN - AT SEVENTH FLOOR ON CONGRESS STREET STEPBACK  
1/8" = 1'-0"



ROOF PITCH LEGEND  
RD = ROOF DRAIN  
ORD = OVERFLOW ROOF DRAIN



1 ROOF PITCH PLAN  
1/8" = 1'-0"