

© 2015 RYAN SENATORE ARCHITECTURE

667 CONGRESS STREET  
APARTMENTS  
PORTLAND, MAINE



RYAN SENATORE ARCHITECTURE  
667 CONGRESS STREET  
PORTLAND, MAINE 04101  
207-650-6414  
rsenatorearchitect.com

CONSULTANTS:  
STRUCTURAL  
Integrity  
77 Oak Street  
Portland, ME 04101  
207-774-4614

REVISIONS:

DATE: 2 NOVEMBER 2016

PROJECT No. 1503

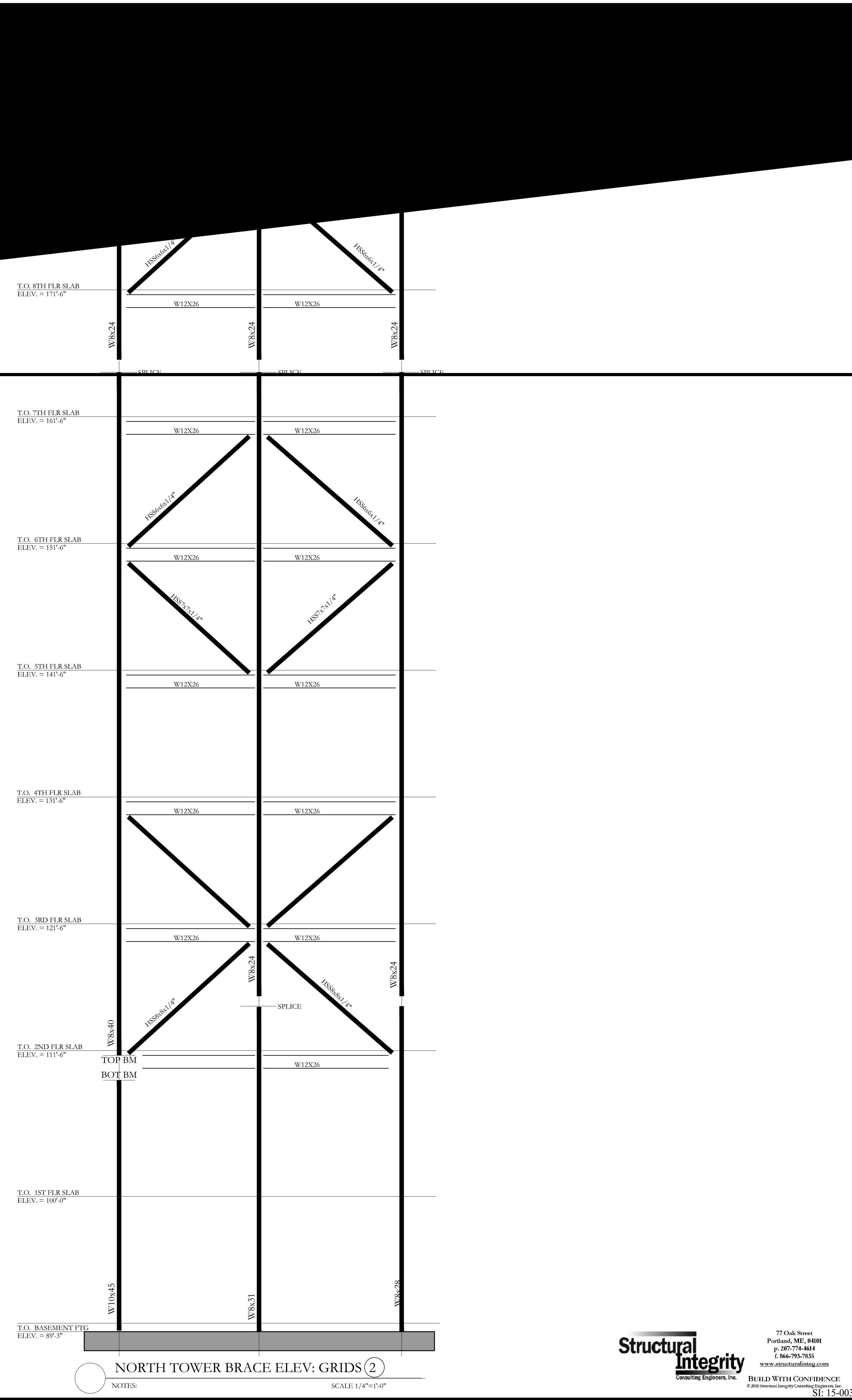
DRAWN BY: MKL

CHECKED BY: AGJ

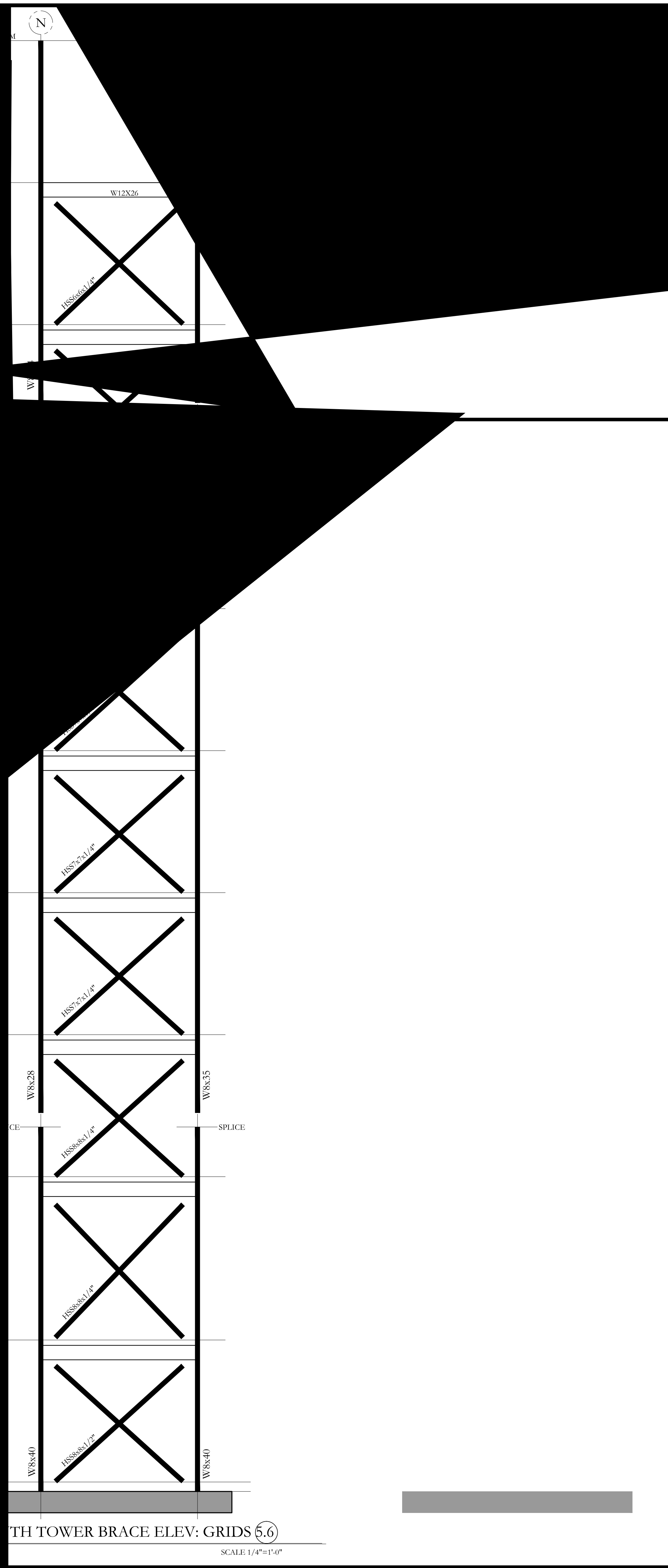
SCALE: AS NOTED

SHEET TITLE:

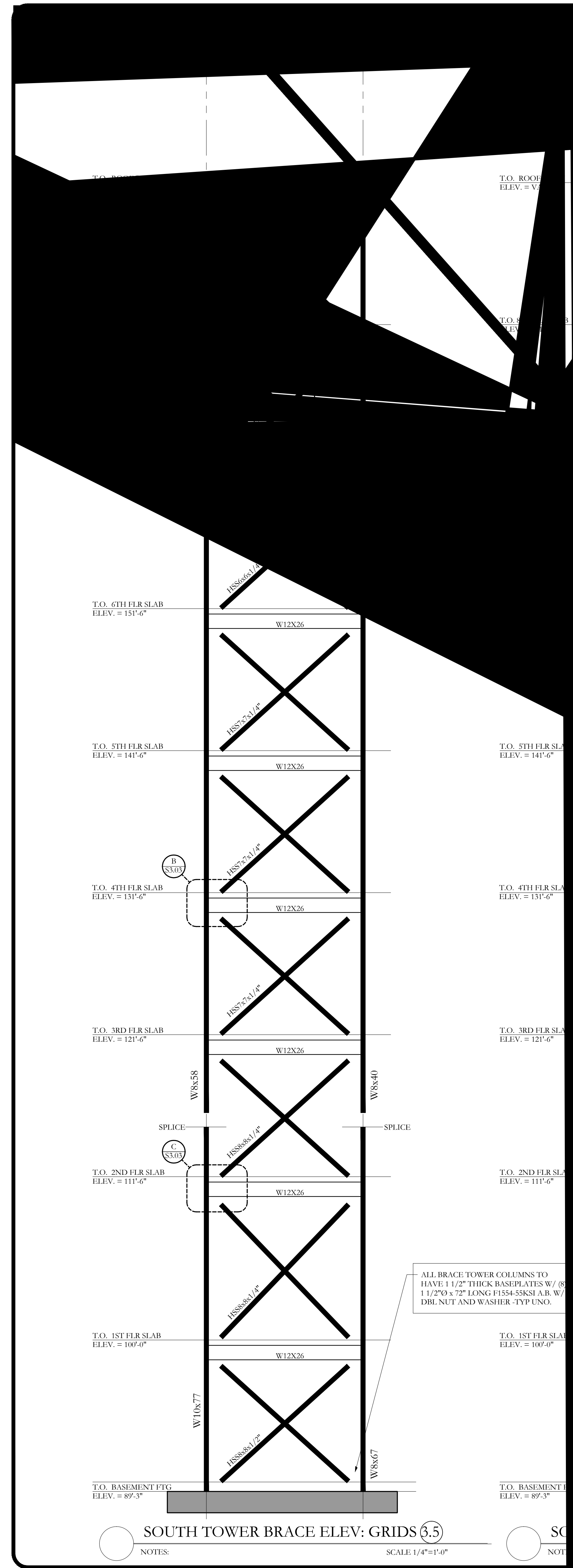
**Structural Integrity**  
Consulting Engineers, Inc. BUILD WITH CONFIDENCE  
77 Oak Street  
Portland, ME 04101  
p. 207-774-4614  
f. 866-793-7835  
www.structuralintegrity.com  
© 2015 Structural Integrity Consulting Engineers, Inc. SI-15-0038



NORTH TOWER BRACE ELEV: GRIDS (2)  
SCALE: 1/4"=1'-0"



SOUTH TOWER BRACE ELEV: GRIDS (5.6)  
SCALE: 1/4"=1'-0"



SOUTH TOWER BRACE ELEV: GRIDS (5.5)  
SCALE: 1/4"=1'-0"

ALL BRACE TOWER COLUMNS TO HAVE 1/2" THICK BASE PLATES W/ 8" x 11/2" x 9" x 7/8" LONG F1554-55KSI AB. W/ DBL NUT AND WASHER -TYP UNO.

NOTES: SCALE: 1/4"=1'-0"

NOTES: SCALE: 1/4"=1'-0"

NOTES: SCALE: 1/4"=1'-0"