

© 2015 RYAN SENATORE ARCHITECTURE

667 CONGRESS STREET
APARTMENTS
PORTLAND, MAINE



RYAN SENATORE
ARCHITECTURE
667 CONGRESS STREET
PORTLAND, MAINE 04101
207-650-6414
rsenatore@architect.com

CONSULTANTS:
STRUCTURAL
Integrity
1 Oak Street
Portland, ME 04101
207-774-4614

REVISIONS:

DATE: 2 NOVEMBER 2016

PROJECT NO. 1503

DRAWN BY: MKL

CHECKED BY: AGJ

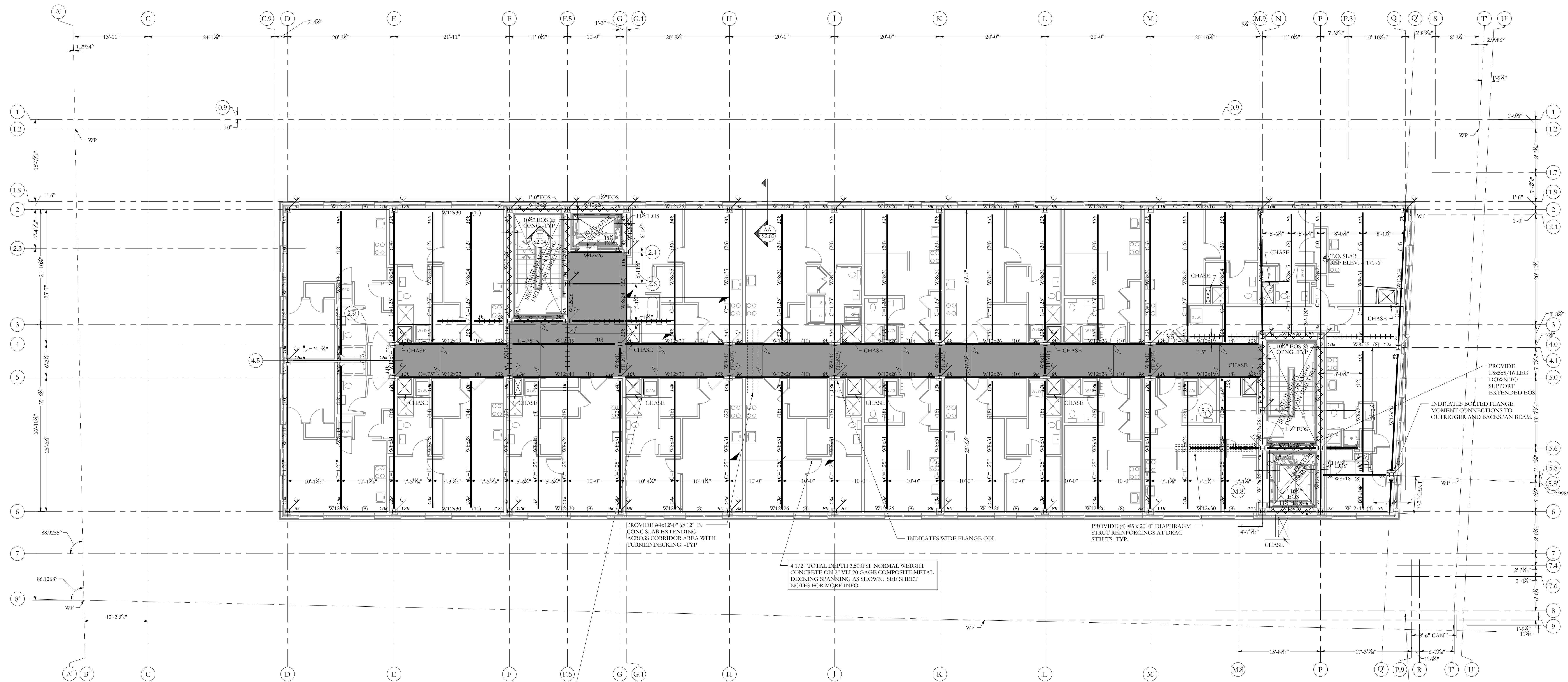
SCALE: AS NOTED

SHEET TITLE:

8TH FLOOR
FRAMING PLAN

S1.08

Structural
Integrity
Consulting Engineers, Inc. BUILD WITH CONFIDENCE
77 Oak Street
Portland, ME 04101
p. 207-774-4614
e. 866-793-7835
www.structuralintegrity.com
© 2015 Structural Integrity Consulting Engineers, Inc. SE-15-0038



8TH FLOOR FRAMING PLAN

- NOTES:
- SEE SHEET S0.00 & S0.01 FOR GENERAL STRUCTURAL NOTES AND ADDITIONAL INFORMATION.
 - COORDINATE ALL THRU SLAB PLUMBING & CHASES ETC. W/ ARCH AND MECHANICAL DRAWINGS -TYP.
 - ALL SMALL FRAME BEAMS @ OPENINGS ETC. SHALL BE W8x24 -TYP UNO
 - PROVIDE 3" MINIMUM CONCRETE WRAP AROUND ALL EXPOSED STL COLUMNS.
 - ALL STEEL FRAMING, CONNECTIONS, BOLTS ETC. AT EXPOSED GARAGE BELOW TO BE HOT DIP GALV. NOTE: CONC WRAPPED COLUMNS EXCLUDED.
 - 4 1/2" TOTAL DEPTH 3500PSI NORMAL WEIGHT CONCRETE W/ #6 @ W2.1-W2.1 W/W REINFORCING ON 2" V11 20 GAGE COMPOSITE METAL DECKING SPANNING 10'-0" MAX UNSHORED SPAN. (2 SPAN CONT MIN) UNO
 - ALL FLOOR DECKING SHALL BE 2" V11 20 STEEL DECK (20GA) W/ 5/8" PUDDLE WELDS @ 12", 06/4 PATTERN) AND #4 HOT DIP SCREW SIDE LAP FASTENERS PER SPAN. UNO
 - GALV. 230 MIN COATING TOP AND BOT -TYP.
 - MAX UNSHORED DECKING SPAN:
 - 1 SPAN = 8'-2"
 - 2 SPAN = 10'-3"
 - 3 SPAN = 10'-7"
 - ALL COMPOSITE BEAMS TO HAVE QUANTITY OF 3/4" Ø x 3 1/2" HAS AS NOTED ON PLANS AS "#x#>". MINIMUM (1) 3/4" x 3 1/2" HAS @ 24" O.C. ALONG SPAN -TYP.
 - T.O. STL BEAM ELEV = [171'-1 1/2'] -TYP UNO THIS LEVEL.
 - ALL ELEVATIONS LISTED BASED OFF REFERENCE ELEVATION 100'-0" EQUAL TO USGS 110'-0"
 - (TEMP) INDICATES TEMPORARY BEAMS FOR ERECTION STABILITY.
 - CONCRETE FLOOR DESIGNED AS RESTRAINED ASSEMBLY CONDITION

FRAMING KEY	
	INDICATES DROPPED BEAM -TYP UNO
	INDICATES FLUSH TOP BEAM -TYP UNO
	INDICATES X-BRACED BAY BELOW
	INDICATES W8x28 DRAG STRUT W/ (10) 3/4" Ø x 3 1/2" HAS -TYP UNO
	INDICATES BEAM END W/ MOMENT CONN.
	INDICATES COL CONT. (SPICES, SEE COL. SCHD.)
	INDICATES COL ABOVE, SEE COL. SCHD.
	INDICATES COL BELOW
	INDICATES DECKING SPAN -TYP