

© 2015 RYAN SENATORE ARCHITECTURE

667 CONGRESS STREET  
APARTMENTS  
PORTLAND, MAINE



RYAN SENATORE  
ARCHITECTURE  
667 CONGRESS STREET  
PORTLAND, MAINE 04101  
207-650-6414  
senatorearchitecture.com

CONSULTANTS:  
STRUCTURAL  
Structural Integrity  
77 Oak Street  
Portland, ME 04101  
207-774-4814

REVISIONS:

DATE: 19 OCTOBER 2015

PROJECT No. 1503

DRAWN BY: RJS / RRT

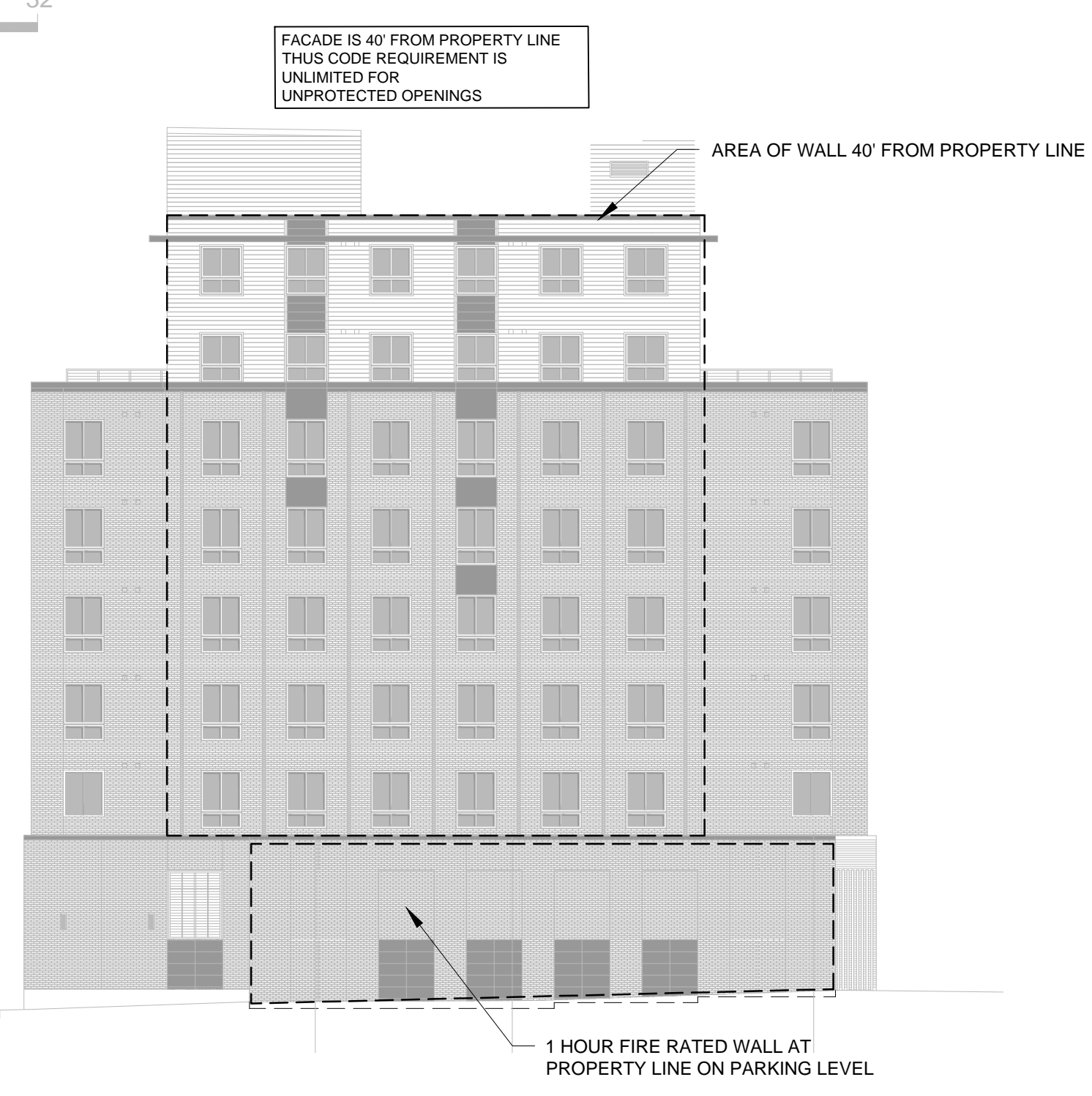
CHECKED BY: RJS

SCALE: AS NOTED

SHEET TITLE:  
CODE REVIEW  
ELEVATIONS

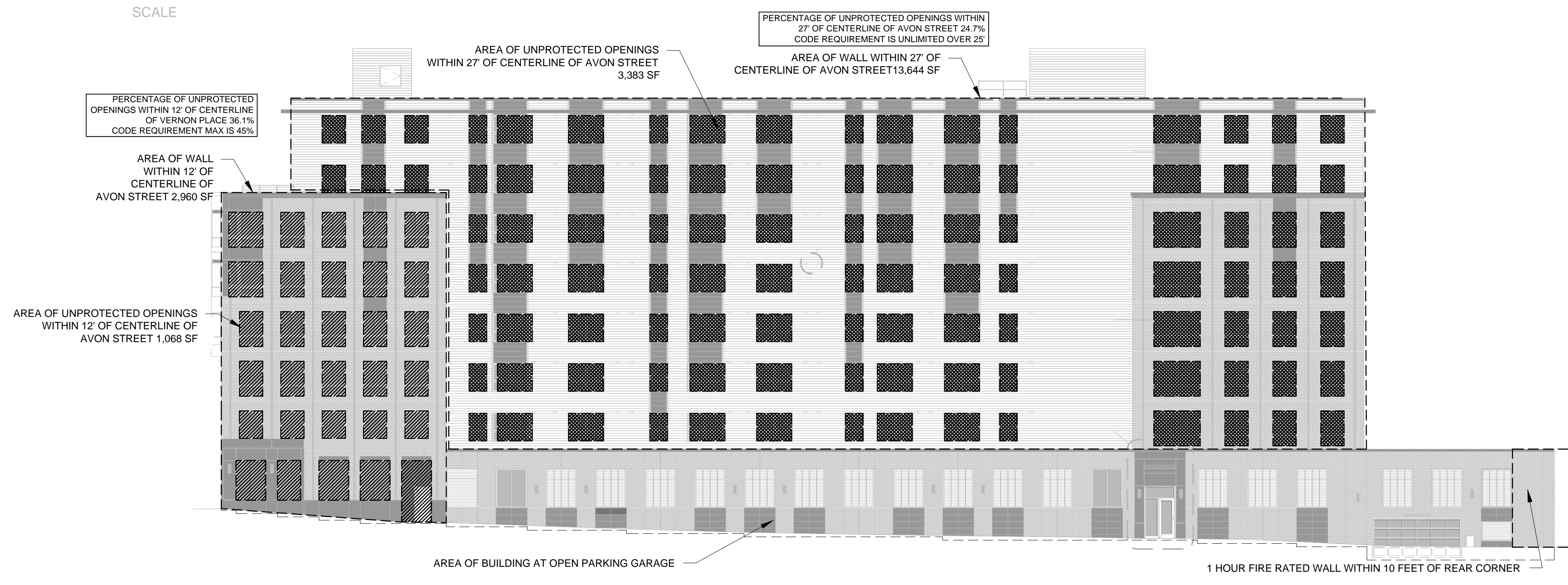
G1-3

0 4' 8' 16' 32'  
SCALE



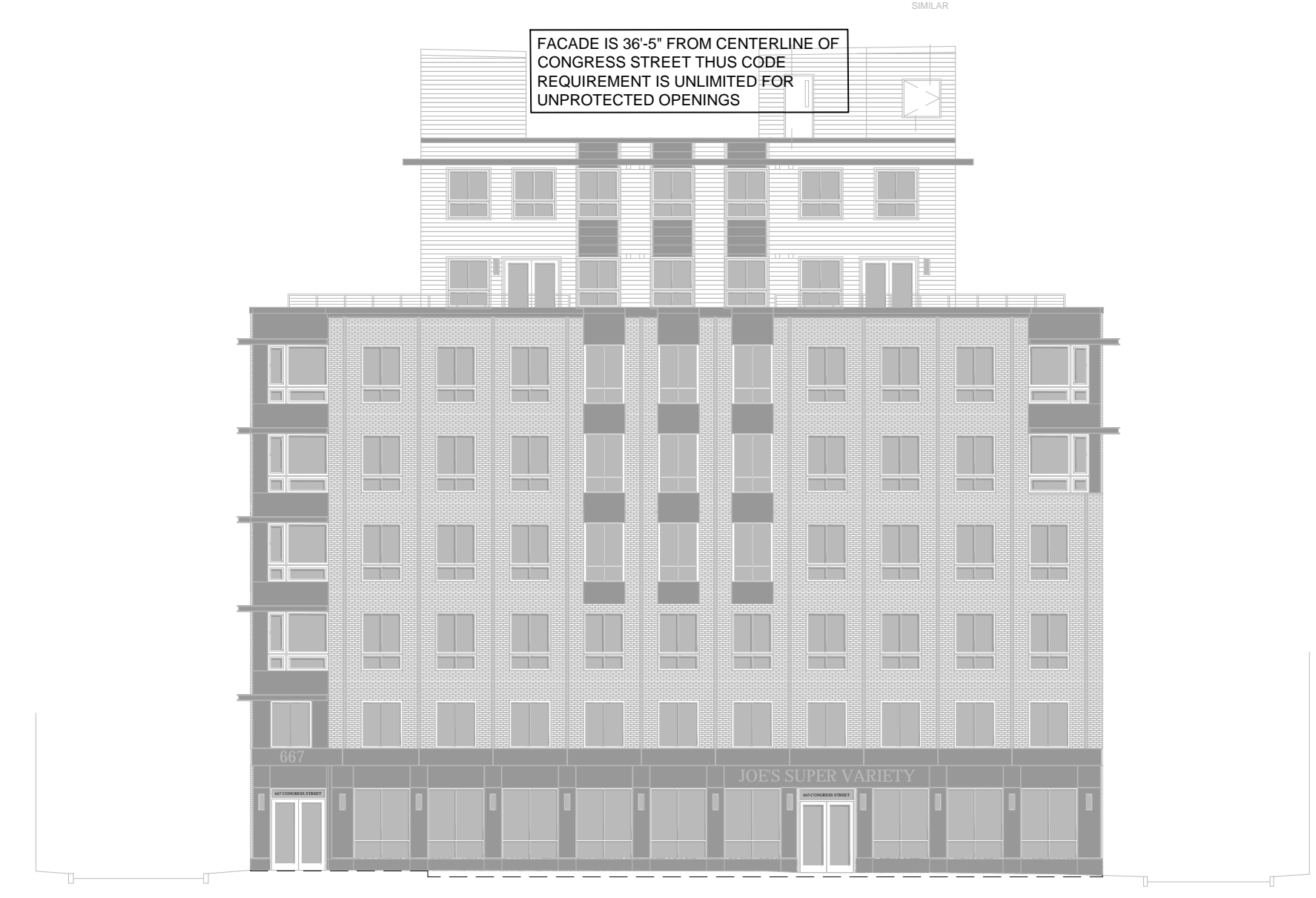
4 CODE REVIEW NORTH ELEVATION  
1/16" = 1'-0"

0 4' 8' 16' 32'  
SCALE



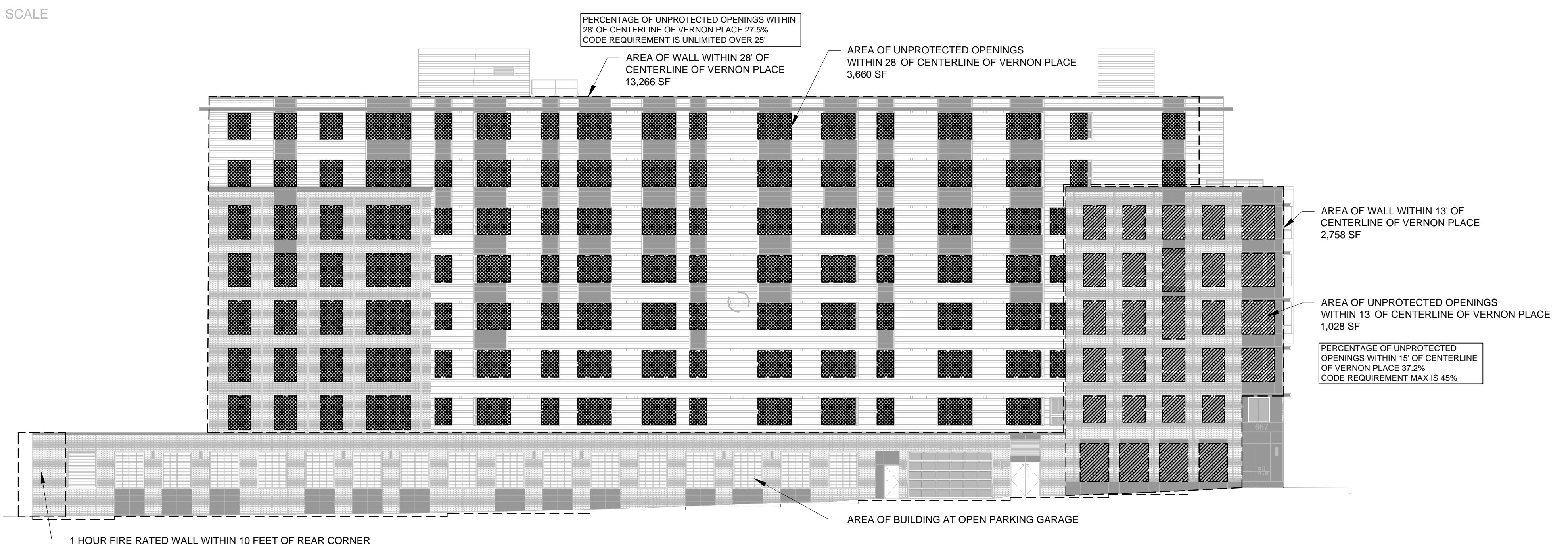
3 CODE REVIEW WEST ELEVATION  
1/16" = 1'-0"

0 4' 8' 16' 32'  
SCALE



2 CODE REVIEW SOUTH ELEVATION  
1/16" = 1'-0"

0 4' 8' 16' 32'  
SCALE



1 CODE REVIEW EAST ELEVATION  
1/16" = 1'-0"