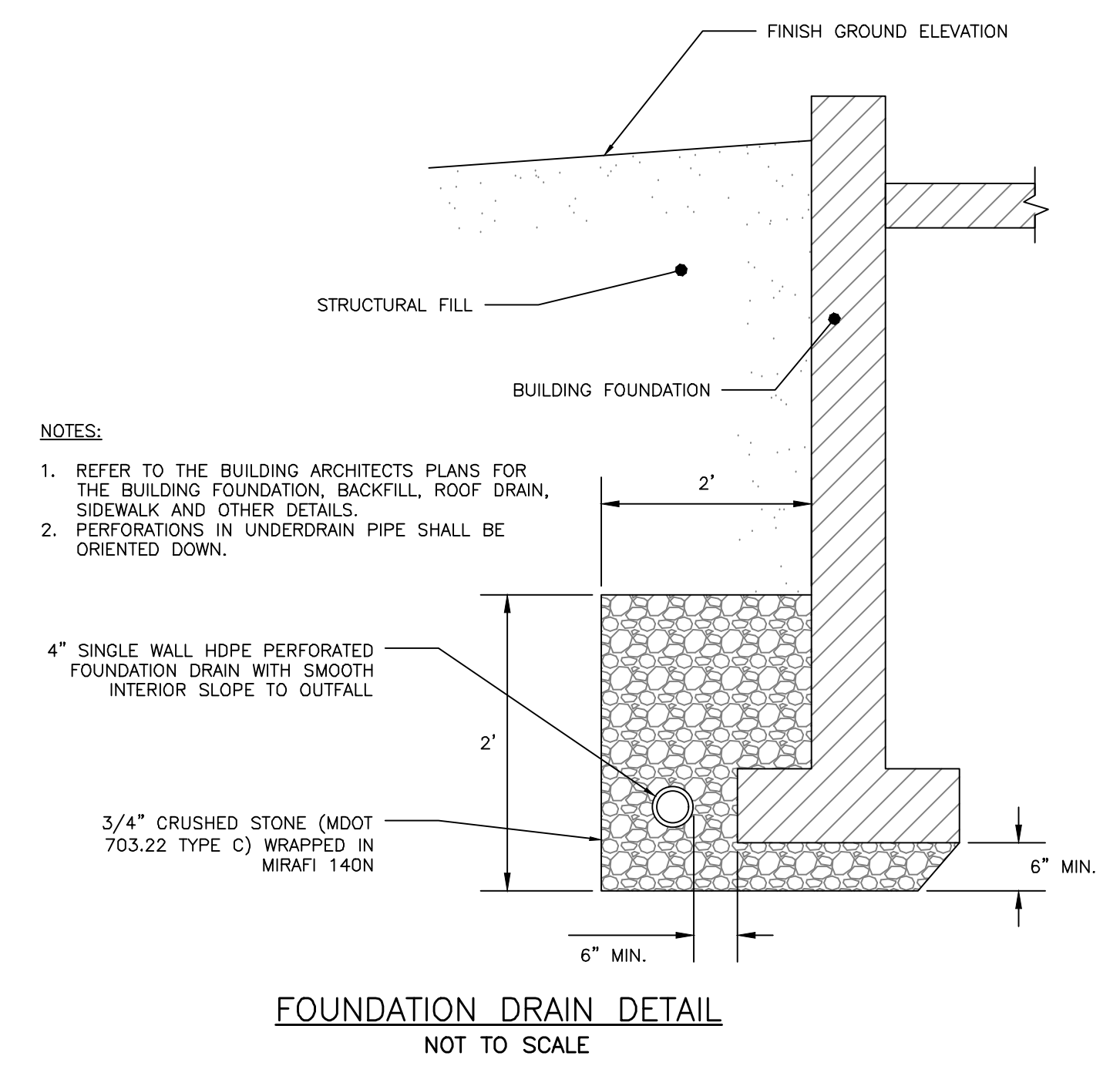
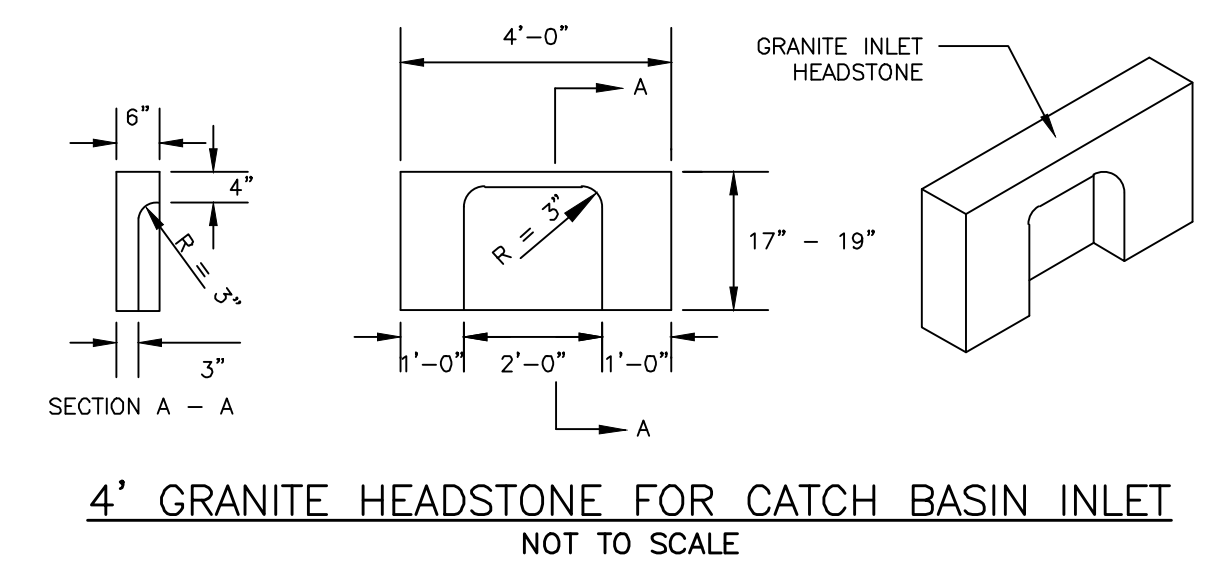
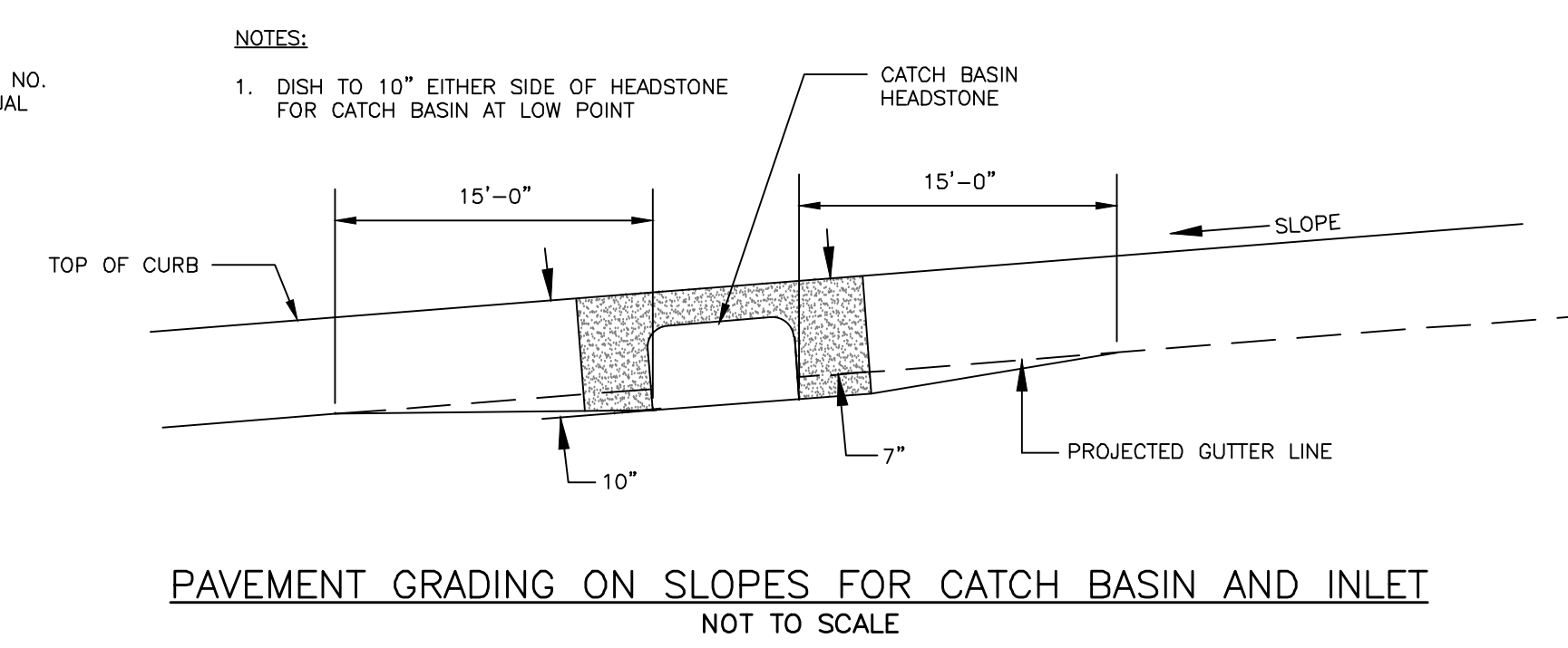
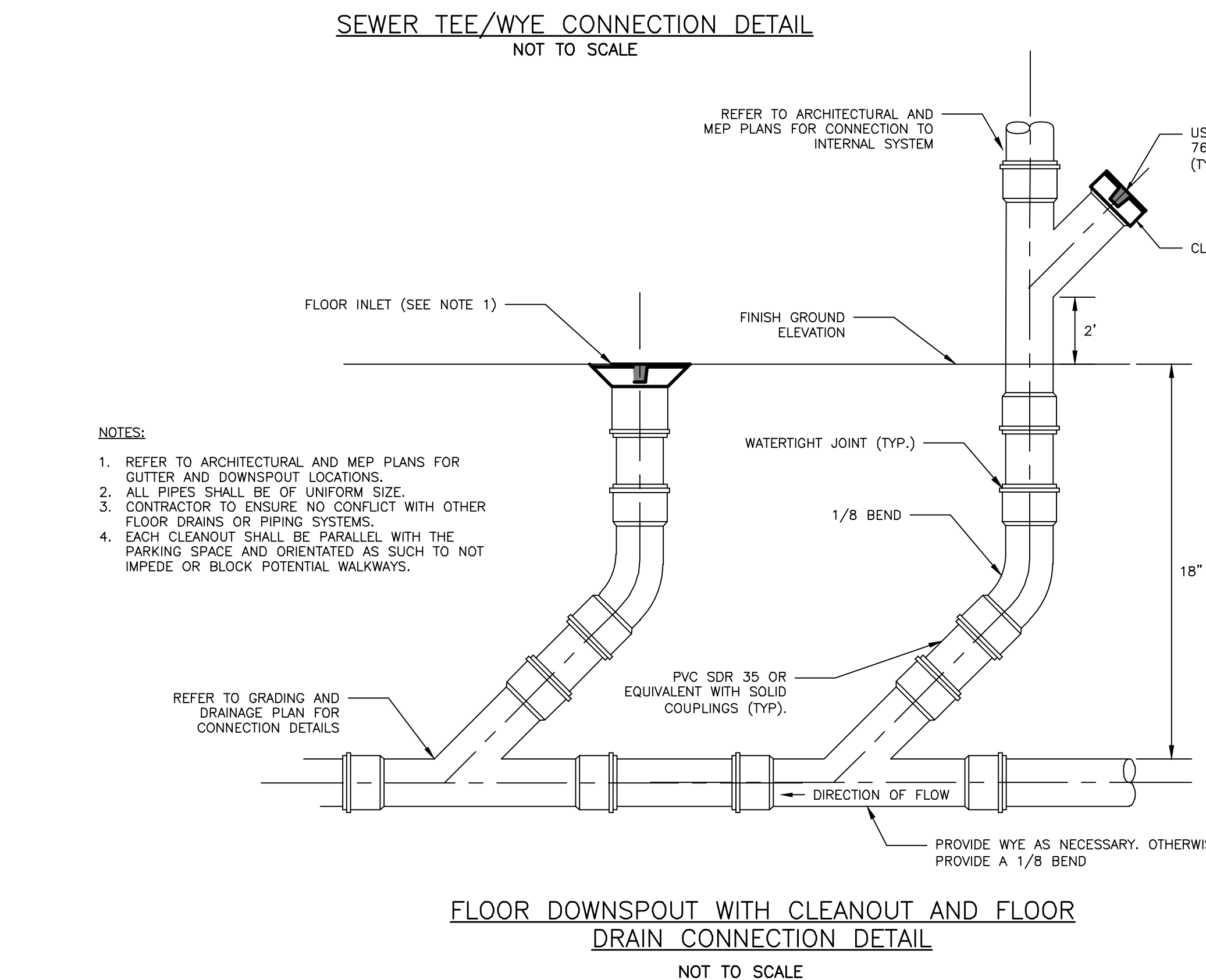
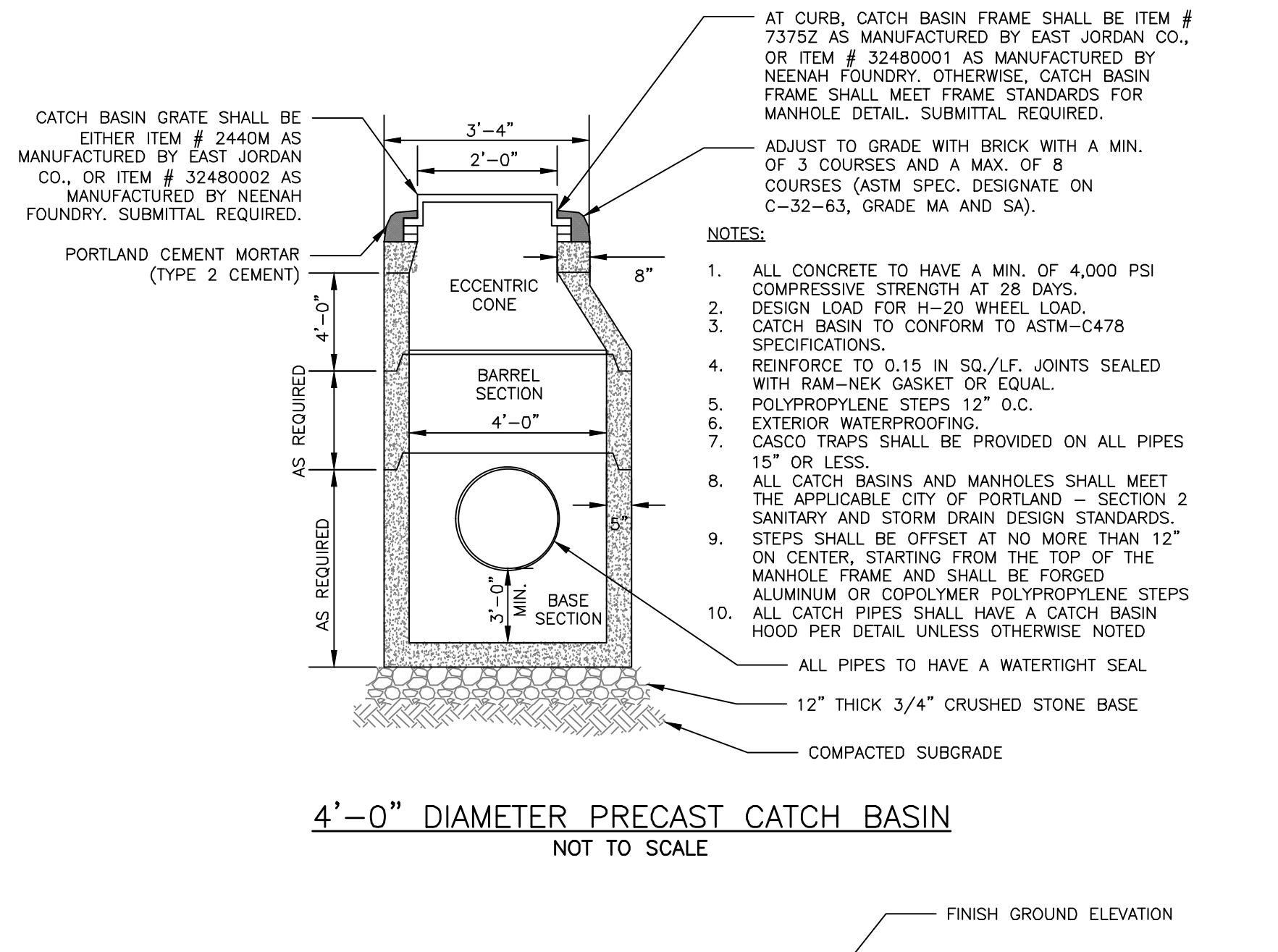


SCHEDULE OF MATERIALS		
TYPE OF PIPE	GRANULAR BEDDING	SELECT BACKFILL
CMP DUCTILE IRON RCP	MDO 703.22 TYPE B UD BACKFILL	MDO 703.22 TYPE B UD BACKFILL
PVC/HDPE	MDO 703.22 TYPE C 3/4" CRUSHED STONE	MDO 703.22 TYPE B UD BACKFILL
CMP	MDO 703.22 TYPE C 3/4" CRUSHED STONE	MDO 703.22 TYPE C 3/4" CRUSHED STONE

- NOTES:
1. BRACING AND SHEETING OR OTHER TRENCH PROTECTION TO BE PROVIDED TO MEET APPLICABLE STATE AND O.S.H.A. SAFETY STANDARDS. ALL SUCH TRENCH PROTECTION TO BE THE RESPONSIBILITY OF THE CONTRACTOR.
2. STORM DRAIN COVER BETWEEN 2' AND 3' SHALL INCLUDE 4" OF RIGID INSULATION COVER BETWEEN 3' AND 4' SHALL INCLUDE 2" RIGID INSULATION. OTHER UTILITIES: ADD 2" OF RIGID INSULATION FOR EACH FOOT ABOVE MINIMUM DEPTH.
3. INSTALL WARNING TAPE DIRECTLY ABOVE UTILITIES AT THE TOP OF SUBGRADE.
4. MINIMUM COVER
4.1. 2'-0" - STORM DRAIN
4.2. 5'-0" - SEWER
5. NO TREES SHALL BE PLANTED WITHIN 5' OF A SEWER PIPE OR SERVICE
6. THIS DETAIL SHALL BE APPLIED ONLY TO DRAINAGE PIPE TRENCHES OUTSIDE OF THE CITY OF PORTLAND ROW.
7. THICKNESS AS NOTED BY SURFACE DETAILS



ISSUED FOR CONSTRUCTION

ISSUED FOR	BY
PRELIM. APPLICATION	DATE
PC DD SET	WHS
PC PROGRESS SET	7/30/15
COMMENT/RESPONSE	8/7/15
FINAL SUBMISSION	WHS
BIDDING	10/13/15
COA	10/19/15
FOR CONSTRUCTION	WHS
	02/20/16
REVISION	REV.
	DATE

DRAWING NAME: DRAINAGE DETAILS 1

PROJECT NAME: 667 CONGRESS STREET REDEVELOPMENT

CLIENT: REDFERN PROPERTIES, LLC.

P.O. BOX 8818 PORTLAND, ME 04104

ACORN ENGINEERING, INC. ENGINEERING, INC.

158 DANFORTH (207) 779-2655

FILE: 1060_DETAILS

DATE: 4/20/2015

JN: 1060

SCALE: NTS

DESIGNED BY: WHS

DRAWN BY: MAC

CHECKED BY: WHS

DRAWING NO. C-43