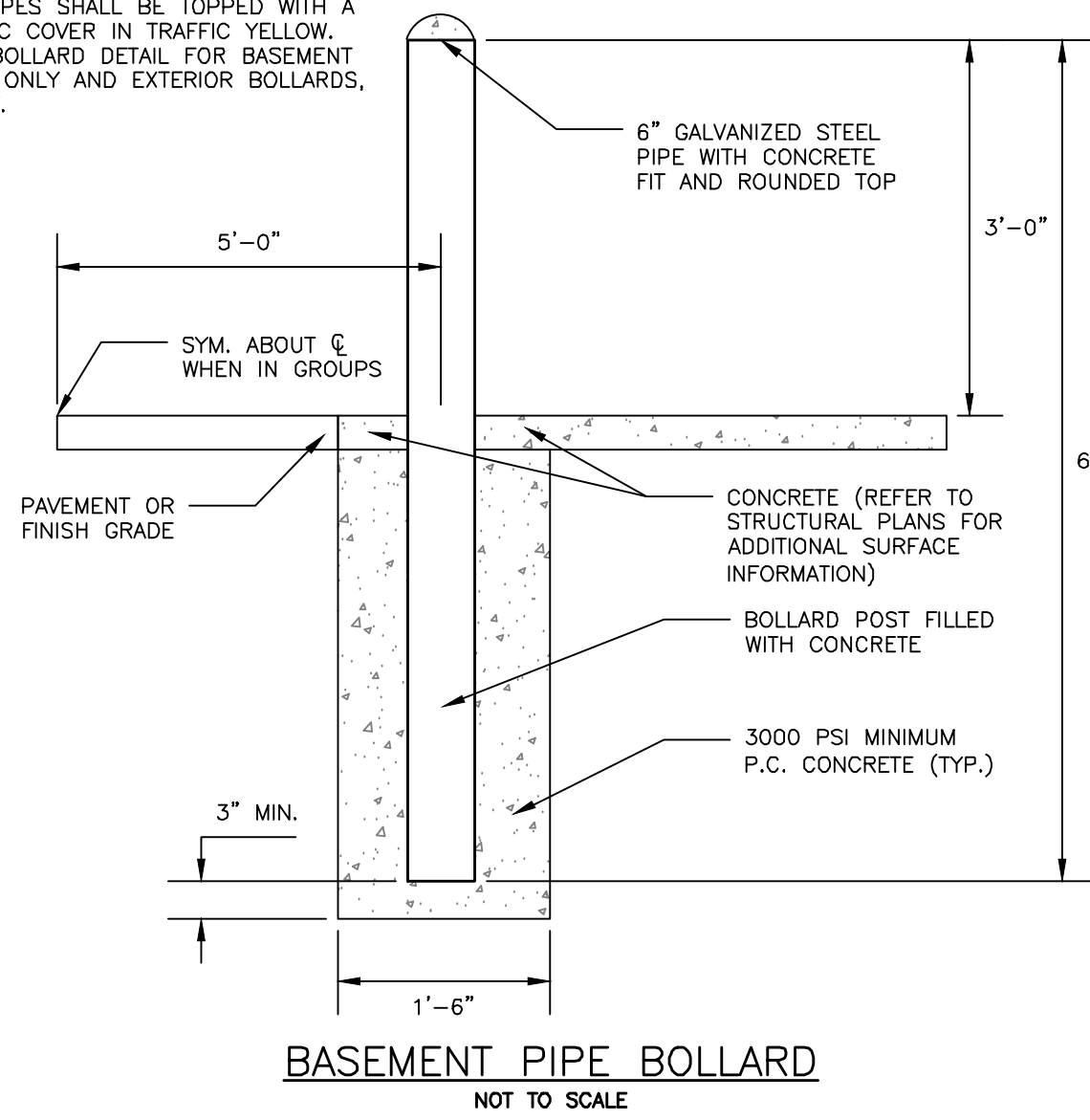


**NOTES:**

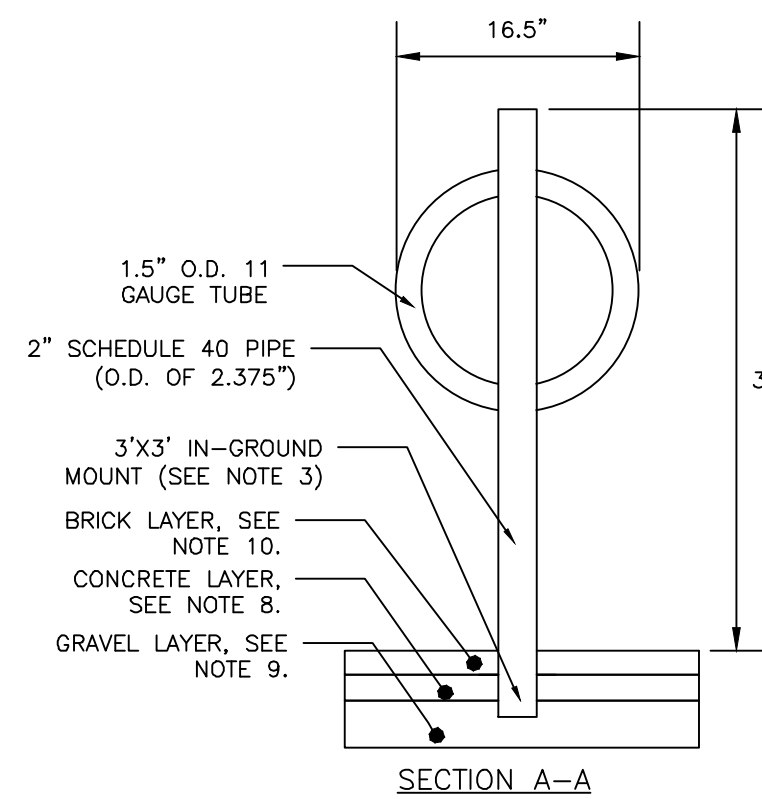
1. ALL PIPES SHALL BE TOPPED WITH A PLASTIC COVER IN TRAFFIC YELLOW. PIPE BOLLARD DETAIL FOR BASEMENT LEVEL ONLY AND EXTERIOR BOLLARDS, IF ANY.



**BASEMENT PIPE BOLLARD**  
NOT TO SCALE

**NOTES:**

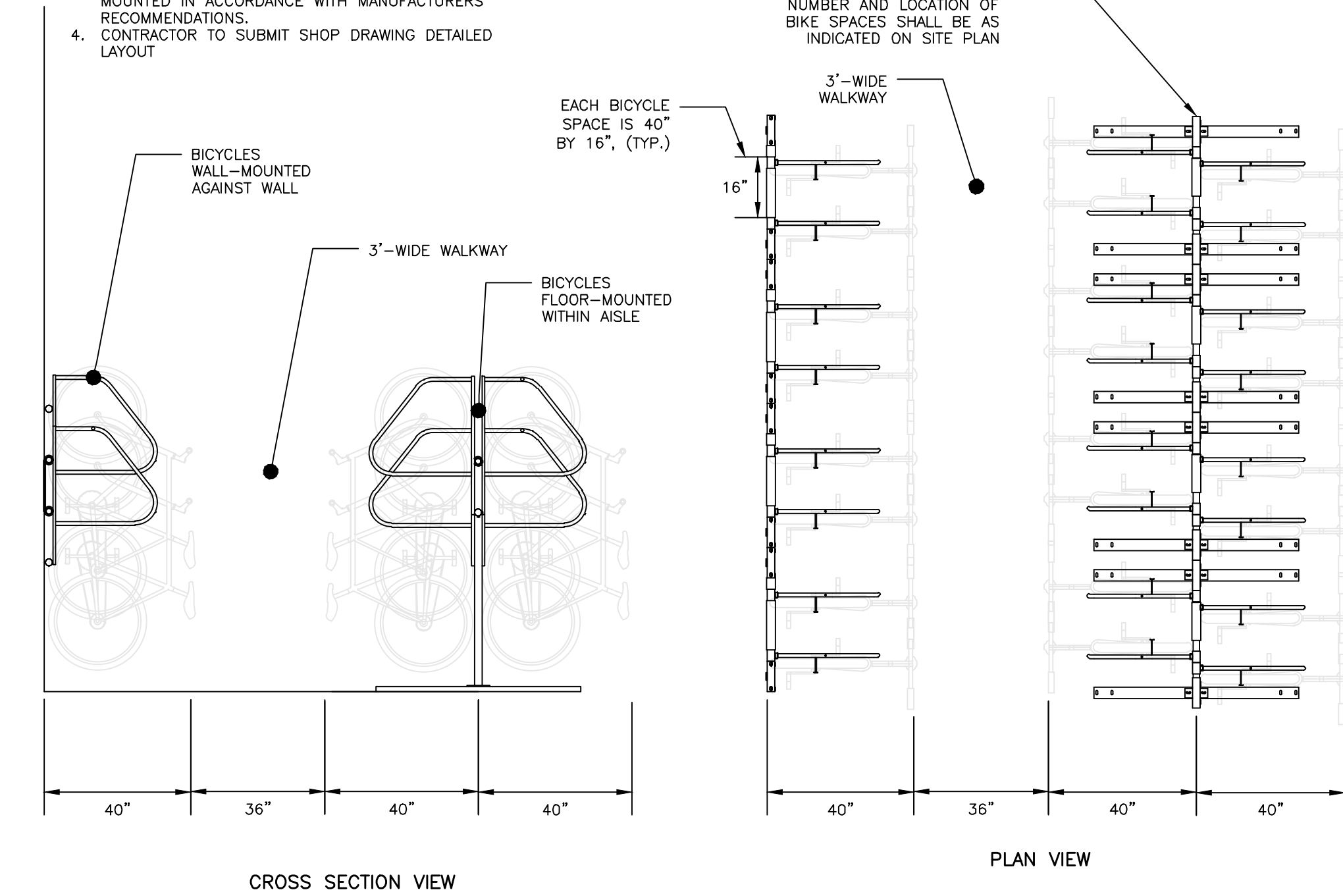
1. BICYCLE RACK SHALL HAVE CAPACITY FOR TWO BICYCLES.
2. BICYCLE RACK PARTS SHALL BE OF UNIFORM COLOR AND SHALL BE FINISHED IN ACCORDANCE WITH PRODUCT SPECIFICATION.
3. BICYCLE RACK SHALL BE INSTALLED IN ACCORDANCE WITH MANUFACTURER'S MOST RECENT INSTALLATION RECOMMENDATIONS, AND SHALL BE INSTALLED WITH AN IN-GROUND MOUNT UNLESS OTHERWISE APPROVED BY ENGINEER.
4. BICYCLE RACK SHALL BE "DERO BIKE HITCH", AS MANUFACTURED BY DERO BIKE RACKS.
5. MINIMUM OFFSETS SHOWN, MANUFACTURER'S RECOMMENDED OFFSETS SHALL BE ENFORCED WHERE POSSIBLE.
6. MINIMUM DISTANCE BETWEEN BICYCLE RACKS SHALL BE 24". RECOMMENDED DISTANCE BETWEEN BICYCLE RACKS SHALL BE 38".
7. ALL OFFSETS ARE FROM OUTSIDE EDGES OF ITEMS.
8. CONCRETE SHALL BE 4000 PSI @28 DAYS. BOTTOM OF CONCRETE SHALL BE AT TOP OF SIDEWALK GRAVEL ELEVATION. DEPTH VARIES APPROX. 4"-7".
9. GRAVEL LAYER SHALL BE INSTALLED IN ACCORDANCE WITH BRICK SIDEWALK WITH BITUMINOUS BASE DETAIL, AND SHALL BE MAINDOT 703.06 TYPE B.
10. TOP OF BRICK LAYER SHALL BE AT SAME ELEVATION IN ACCORDANCE WITH BRICK SIDEWALK DETAIL.
11. 54" MIN DISTANCE BETWEEN EDGE OF STREET AND BICYCLE HITCH IF AISLE IS REQUIRED.



**BICYCLE HITCH DETAIL**  
NOT TO SCALE

**NOTES:**

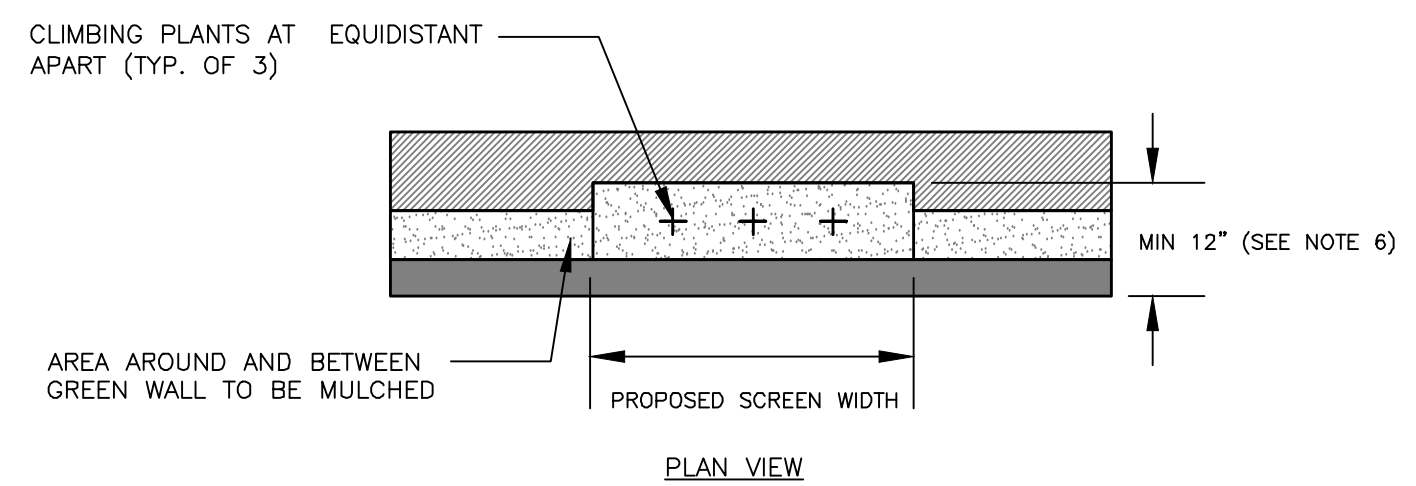
1. FINAL LOCATION OF INTERIOR BICYCLE RACKS SHALL CONFORM TO ALL ARCHITECTURAL DRAWINGS. CONTRACTOR TO NOTIFY ENGINEER AND ARCHITECT WITH ANY DISCREPANCIES.
2. BICYCLE MOUNT SHALL BE ULTRA SPACE SAVER AS MANUFACTURED BY DERO, OR APPROVED EQUAL.
3. BICYCLES SHALL BE WALL MOUNTED OR FLOOR MOUNTED IN ACCORDANCE WITH MANUFACTURER'S RECOMMENDATIONS.
4. CONTRACTOR TO SUBMIT SHOP DRAWING DETAILED LAYOUT



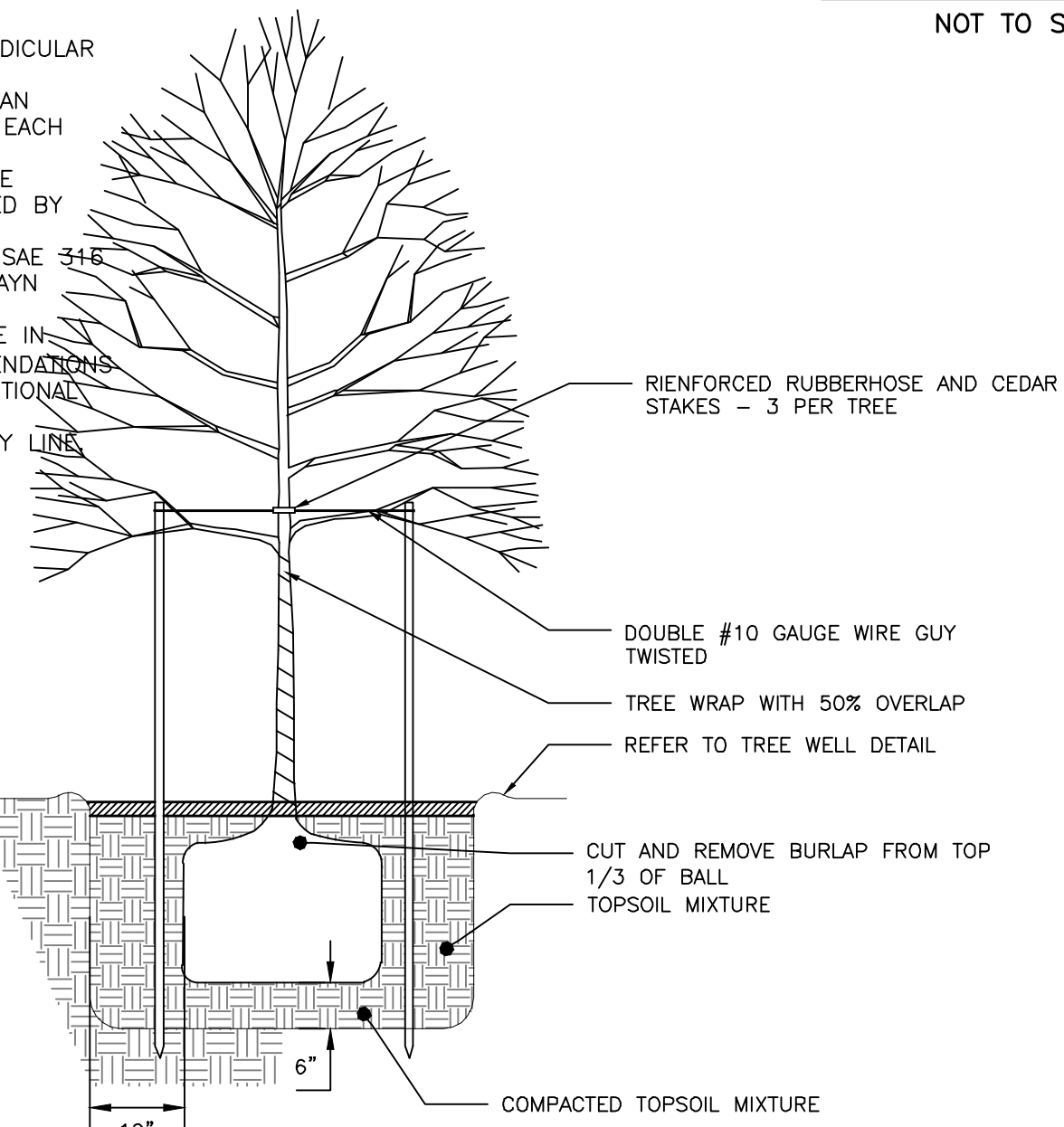
**INTERIOR BICYCLE SPACE LAYOUT**  
NOT TO SCALE

**NOTES:**

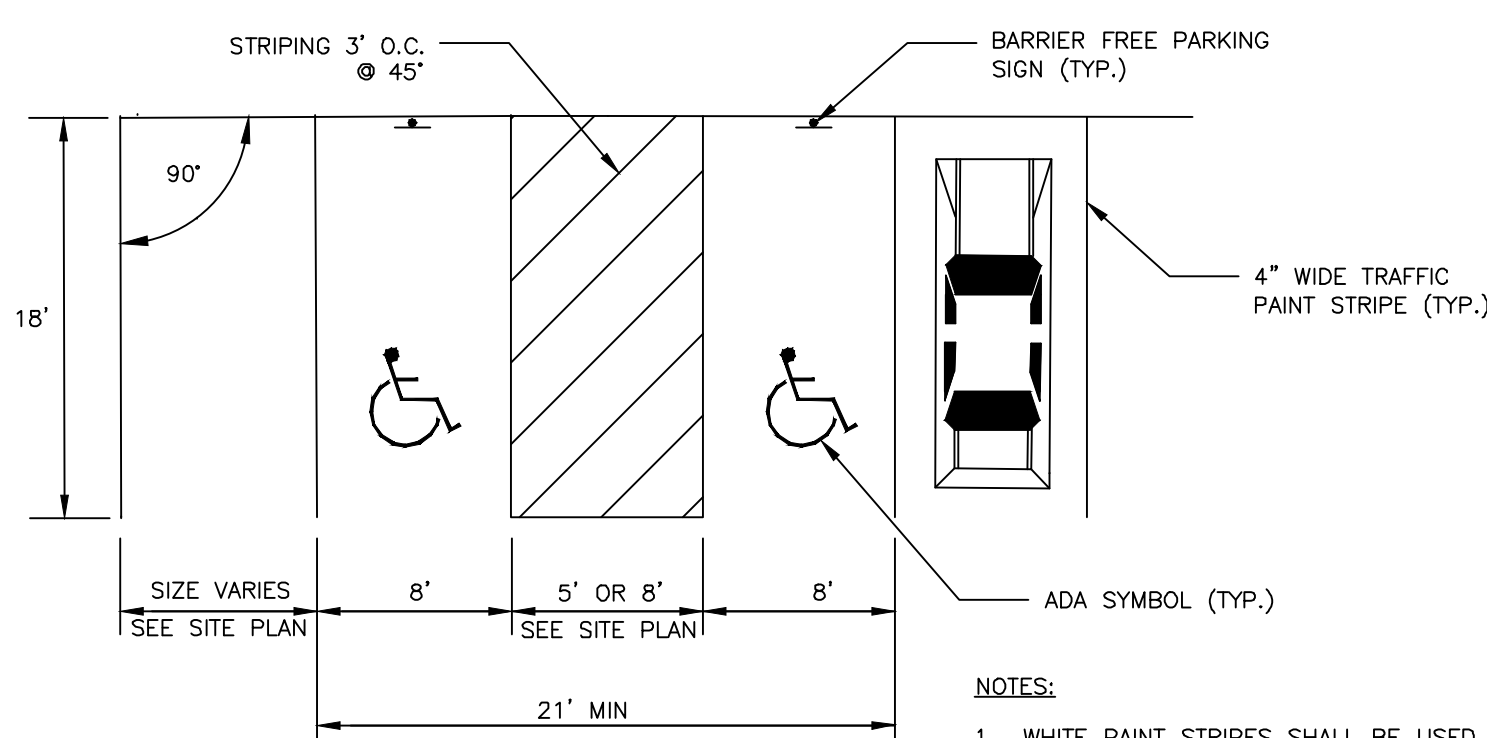
1. WIRE CABLES ARE TO BE ATTACHED PERPENDICULAR TO EACH OTHER FORMING A GRID PATTERN; DUAL-LOCKING TRELIS CROSS CLAMPS OR AN APPROVED ALTERNATIVE SHALL BE USED AT EACH INTERSECTION.
2. FINAL LOCATION OF TRELIS MOUNTS WILL BE DEFINED BY THE CONTRACTOR AND APPROVED BY THE ARCHITECT.
3. ALL TRELIS COMPONENTS TO BE MADE OF SAE STAINLESS STEEL AND MANUFACTURED BY HAYN LINES OR AN APPROVED EQUAL.
4. CONTRACTOR TO INSTALL TRELIS STRUCTURE IN ACCORDANCE TO MANUFACTURER'S RECOMMENDATIONS. REFER TO ARCHITECTURAL DETAILS FOR ADDITIONAL INFORMATION.
5. CURB SHALL NOT EXTEND BEYOND PROPERTY LINE.



**STAINLESS STEEL GREEN WALL TRELIS SYSTEM**  
NOT TO SCALE



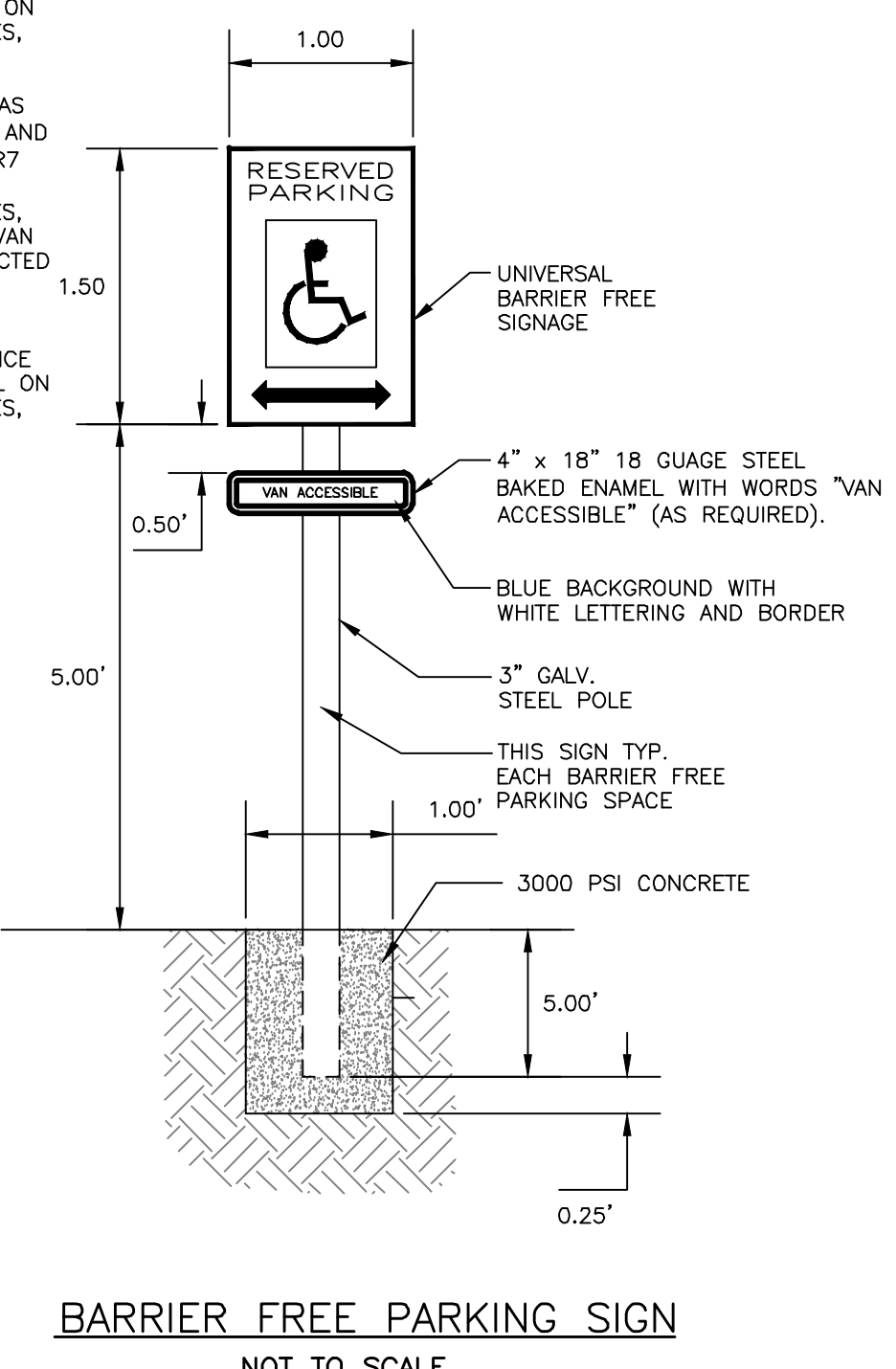
**TREE PLANTING DETAIL**  
NOT TO SCALE



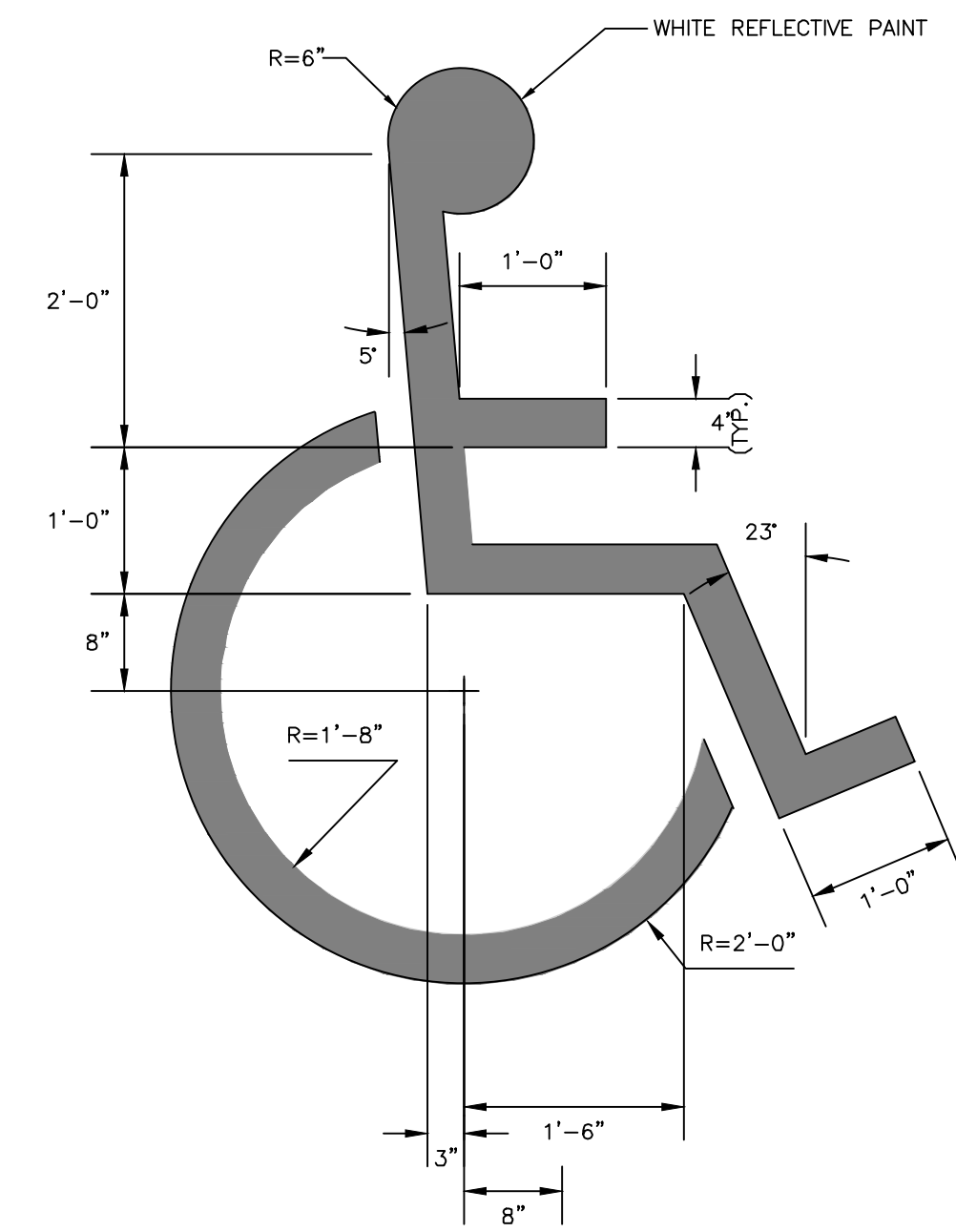
**PARKING SPACE DIMENSIONS**  
NOT TO SCALE

**NOTES:**

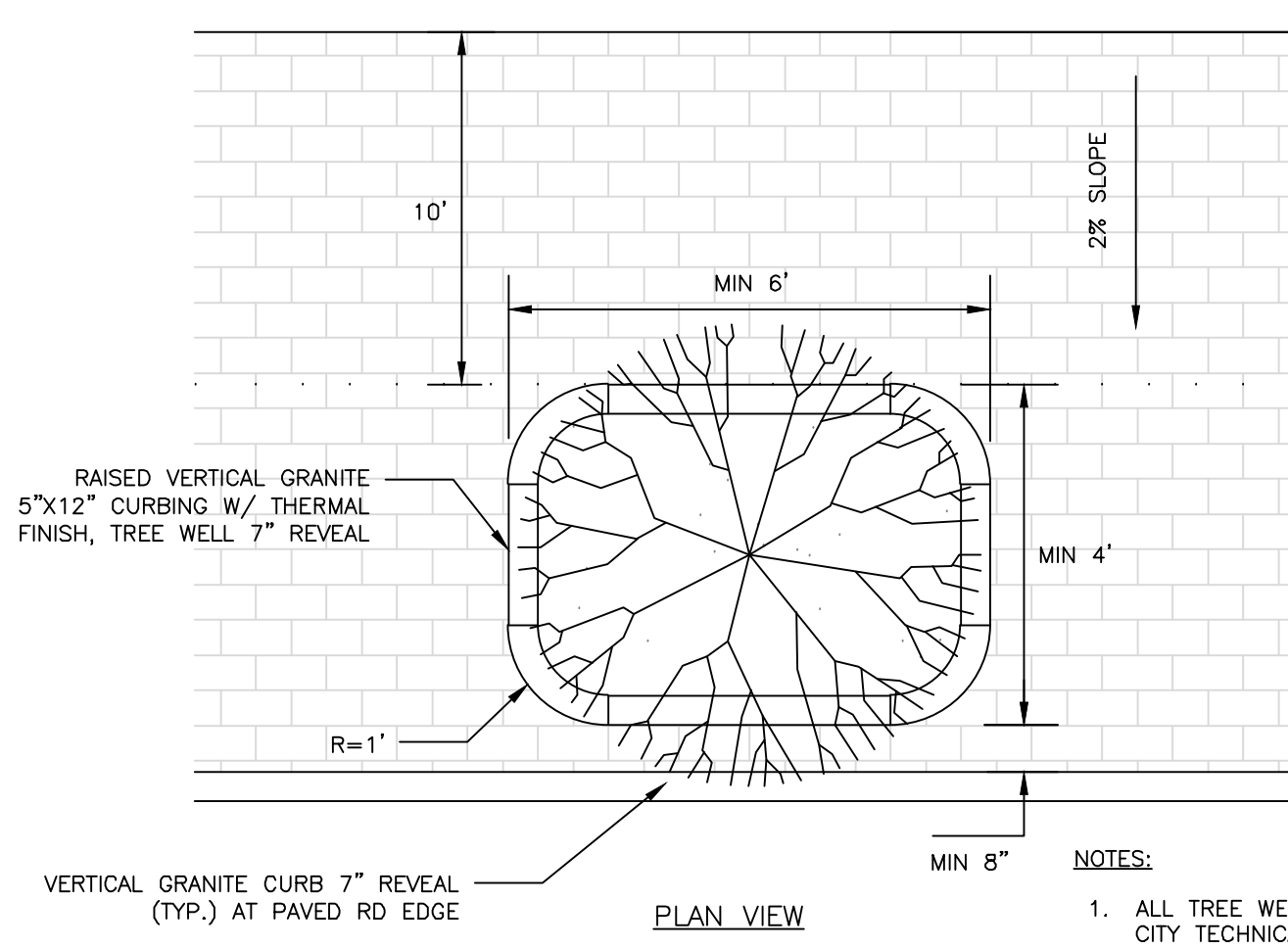
1. ALL ASPECTS OF RESERVED PARKING SIGN CONSTRUCTION SHALL BE IN ACCORDANCE WITH MANUAL ON UNIFORM TRAFFIC CONTROL DEVICES, 2009 OR MOST RECENT EDITION.
2. SIGN SHALL BE CONSTRUCTED AS SIGN R7-8 UNDER THE "PARKING AND STANDING SIGNS AND PLAQUES" (R7 SERIES) WITHIN THE MANUAL ON UNIFORM TRAFFIC CONTROL DEVICES, 2009 OR MOST RECENT EDITION. VAN ACCESSIBILITY SHALL BE CONSTRUCTED AS SIGN R7-8a OR R7-8b.
3. SIGN POST CONSTRUCTION AND MOUNTING SHALL BE IN ACCORDANCE WITH CHAPTER 2A OF THE MANUAL ON UNIFORM TRAFFIC CONTROL DEVICES, 2009 OR MOST RECENT EDITION.



**BARRIER FREE PARKING SIGN**  
NOT TO SCALE



**INTERNATIONAL BARRIER FREE SYMBOL**  
NOT TO SCALE



**RAISED GRANITE CURB TREEWELL**  
NOT TO SCALE

- NOTES:**
1. ALL TREE WELLS SHALL COMPLY WITH CITY TECHNICAL STANDARDS AND MUST BE APPROVED BY THE CITY ARBORIST
  2. GRANITE CURB TREE WELL SHALL BE SIDEWALK MATERIAL PER CITY SIDEWALK MATERIAL POLICY

ISSUED FOR	BY
PRELIM. APPLICATION	WHS
PC DD SET	WHS
PC PROGRESS SET	WHS
COMMENT/RESPONSE	WHS
FINAL SUBMISSION	WHS
BIDDING	WHS
FOR CONSTRUCTION	WHS

REVISION	REV.	DATE

**SITE DETAILS 2**

**667 CONGRESS STREET REDEVELOPMENT**

REDERN PROPERTIES, LLC.

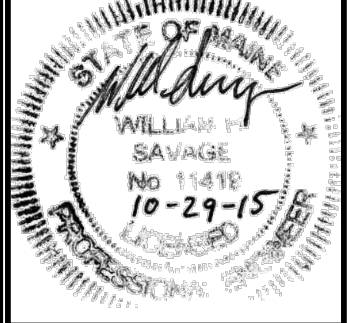
P.O. BOX 8818 PORTLAND, ME 04104

**ACCORN ENGINEERING, INC.**

158 DANFORTH (207) 779-2665

MAINE 04102

FILE:	1060_DETAILS
DATE:	4/20/2015
JN:	1060
SCALE:	NTS
DESIGNED BY:	WHS
DRAWN BY:	MAG
CHECKED BY:	WHS



DRAWING NO.  
**C-41**

ISSUED FOR  
CONSTRUCTION