

CHRISTOPHER M. DELANO
architect
24 New Haven Street, Portland, Maine 04102
207.761.4141

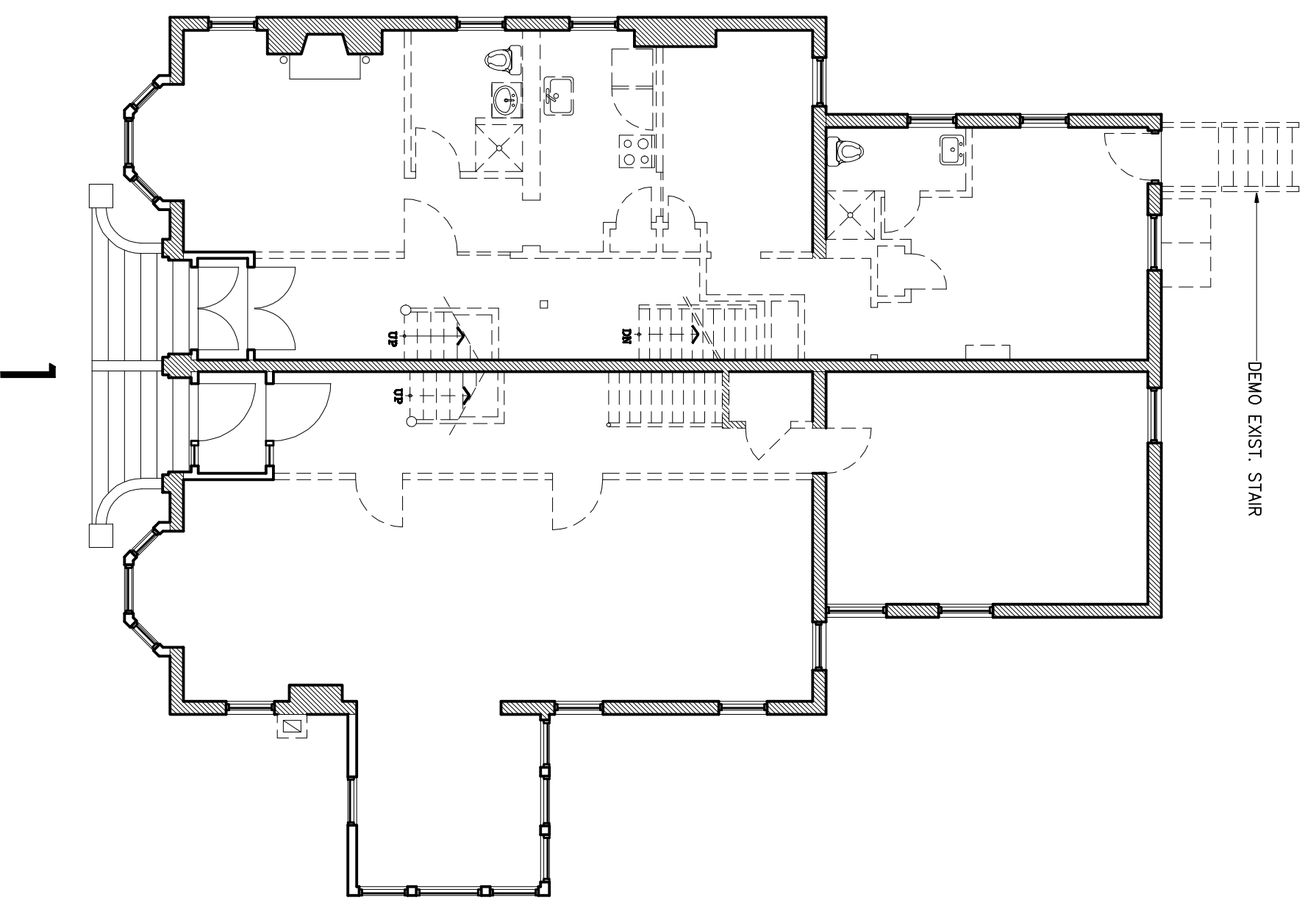
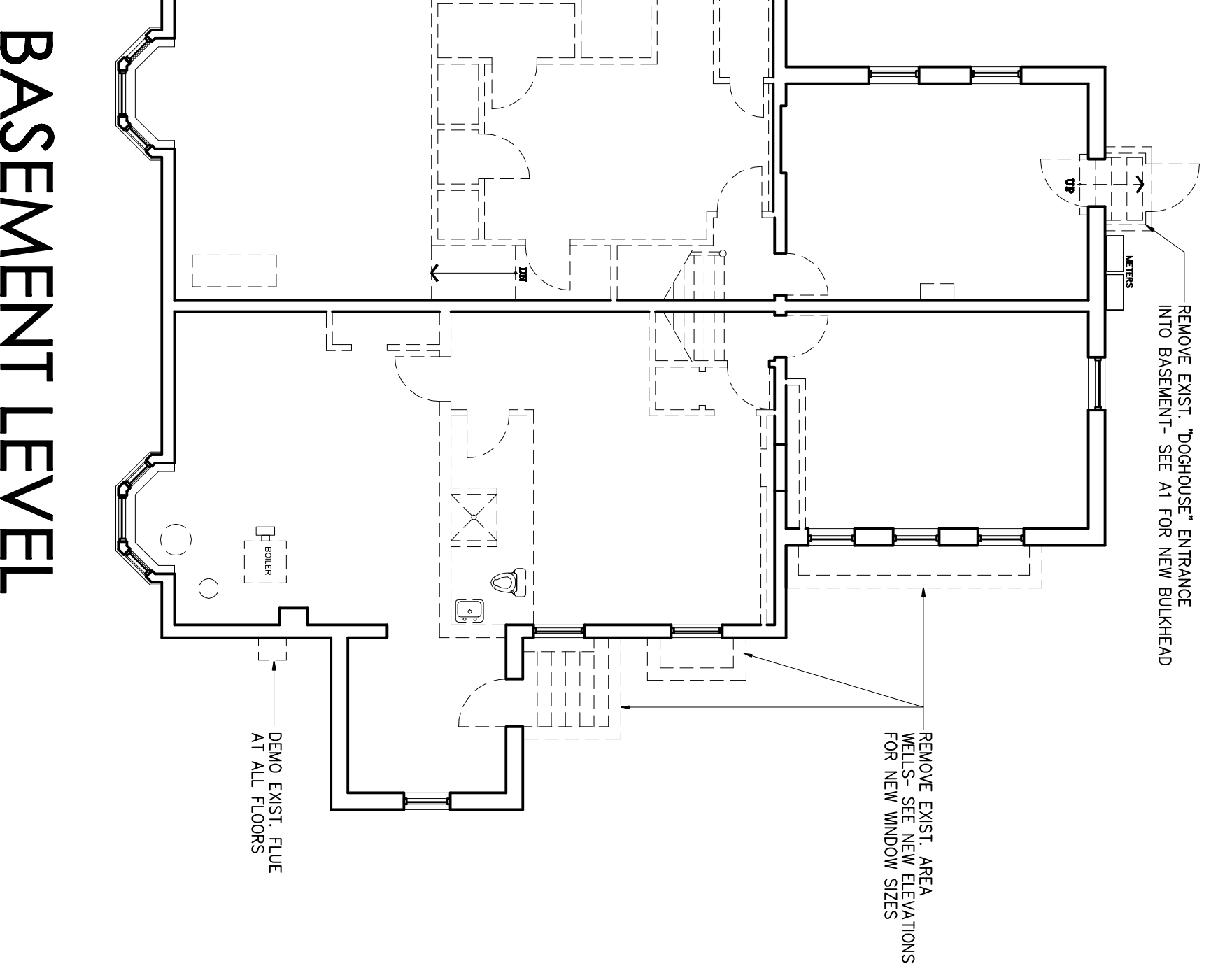
L & L STRUCTURAL ENGINEERING
engineer
6-3 Street, 5, Portland, Maine 04103
207.761.4880

201-203 State Street Condominiums

Condominium Conversion, Portland, Maine

December 18, 2009
DEMOLITION PLANS

PERMIT SET



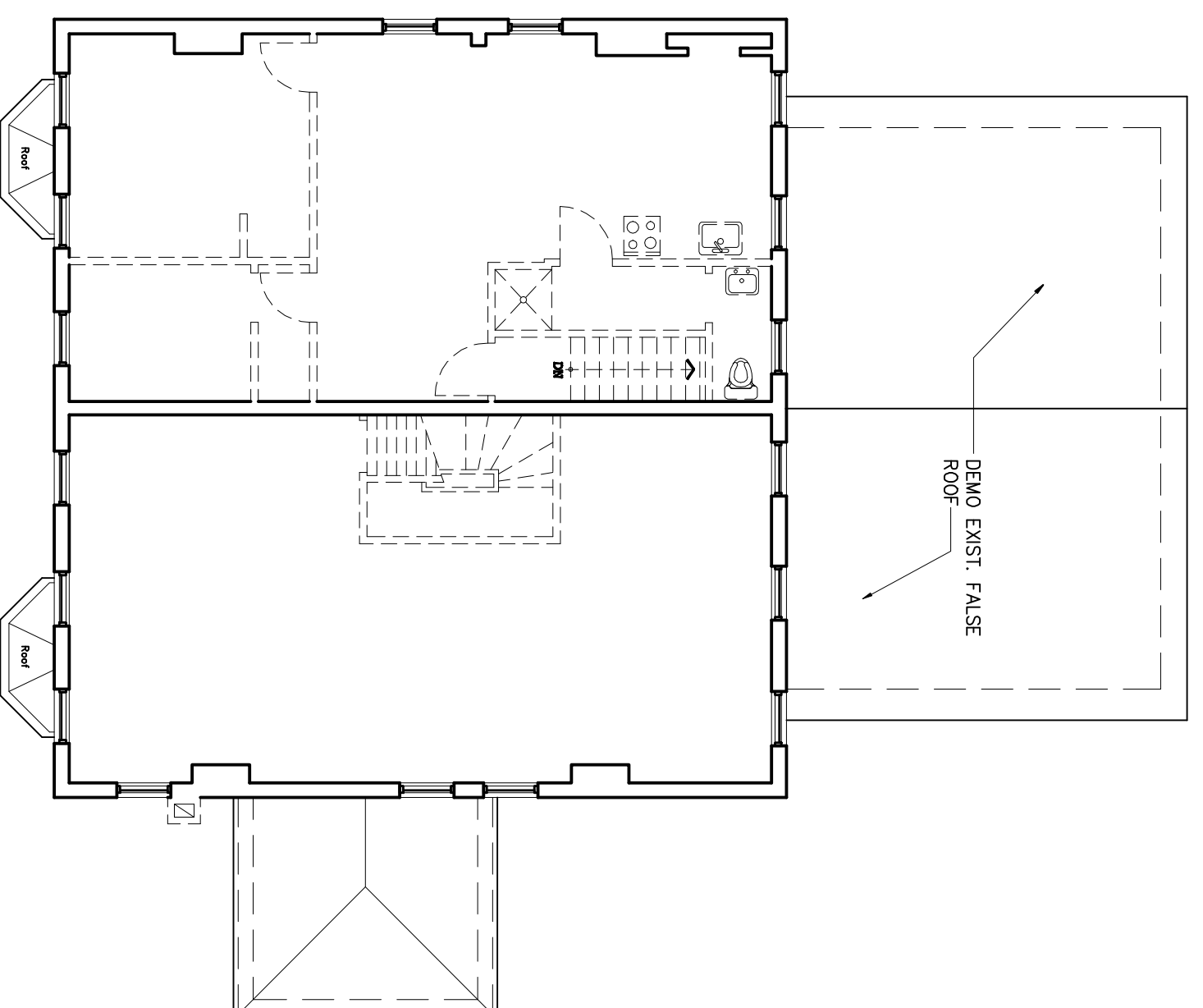
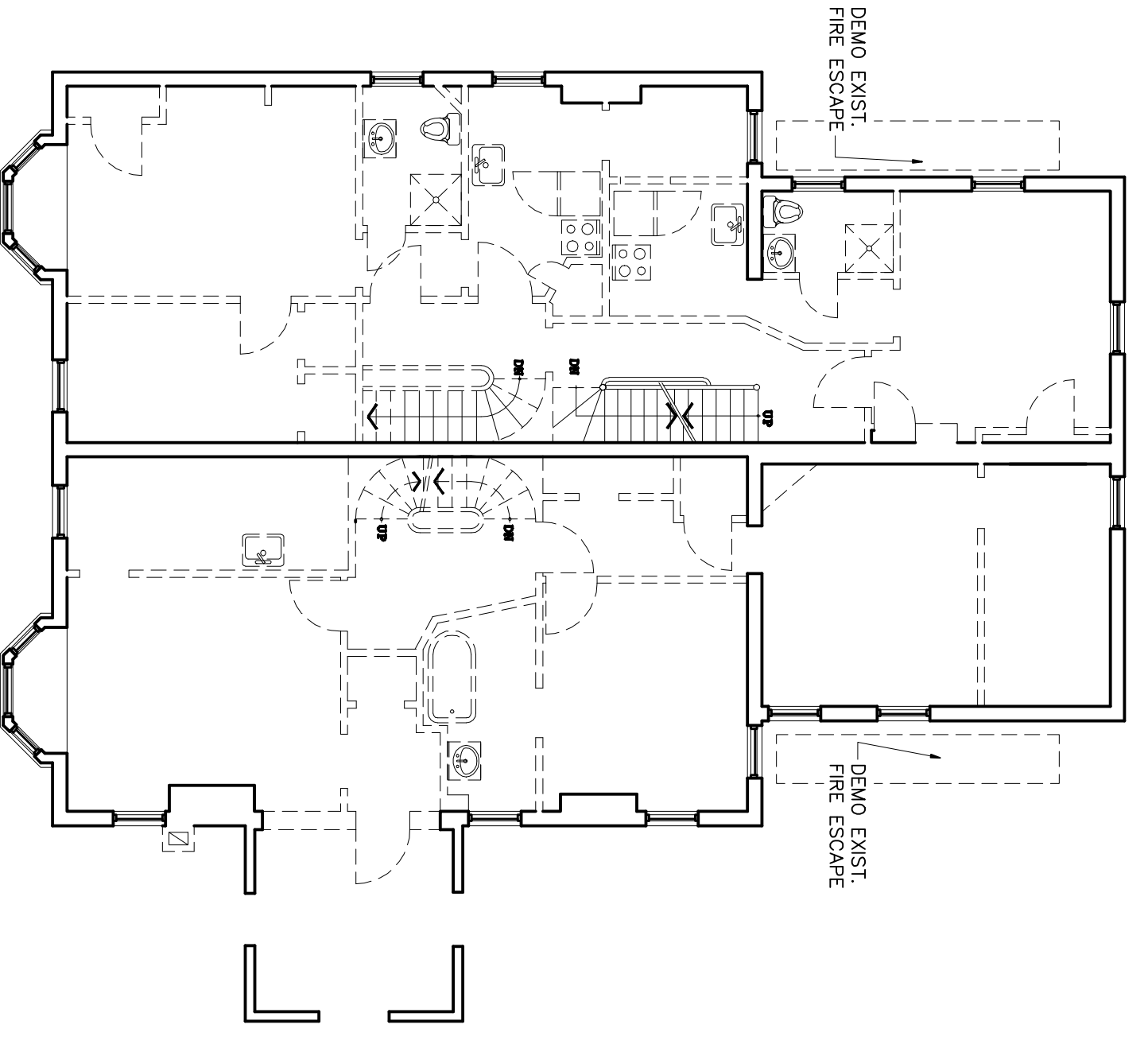
BASEMENT LEVEL

1

HATCH LEGEND

---	DEMOLISH
---	EXIST. BRICK TO REMAIN

NOTES:
1. PRESERVE ALL SUPPORT FLOOR STRUCTURE TO BE CONVERSION AND MAINTAIN AROUND STAIR STAIRWELL AND STAIRS.



2

3

1 DEMOLITION PLAN FOR ALL FLOORS

