

### WINDOW SCHEDULE

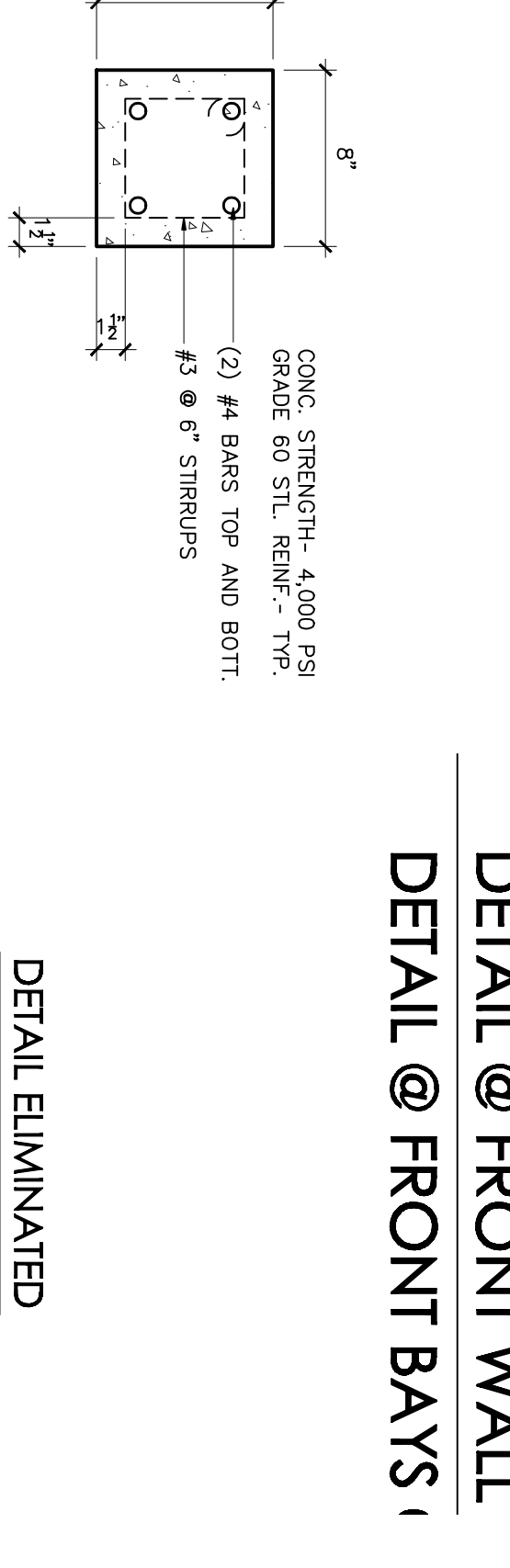
SYMBOL	QTY	ROOM (DRAWING #)	SIZE (W x H)	TYPE	FINISH	NOTES
W1	1	VERNY IN FIELD	4'-0" x 4'-0"	HERITAGE SERIES STATIONARY UNIT	WOOD WORK, PULLERS, BALANCE, ETC.	REPAIR EXIST. STATIONARY UNIT.
W2	1	VERNY IN FIELD	4'-0" x 4'-0"	HERITAGE SERIES STATIONARY UNIT	WOOD WORK, PULLERS, BALANCE, ETC.	REPAIR EXIST. STATIONARY UNIT.
W3	1	VERNY IN FIELD	4'-0" x 4'-0"	HERITAGE SERIES STATIONARY UNIT	WOOD WORK, PULLERS, BALANCE, ETC.	REPAIR EXIST. STATIONARY UNIT.
W4	1	VERNY IN FIELD	4'-0" x 4'-0"	HERITAGE SERIES STATIONARY UNIT	WOOD WORK, PULLERS, BALANCE, ETC.	REPAIR EXIST. STATIONARY UNIT.
W5	1	VERNY IN FIELD	4'-0" x 4'-0"	HERITAGE SERIES STATIONARY UNIT	WOOD WORK, PULLERS, BALANCE, ETC.	REPAIR EXIST. STATIONARY UNIT.
W6	1	VERNY IN FIELD	4'-0" x 4'-0"	HERITAGE SERIES STATIONARY UNIT	WOOD WORK, PULLERS, BALANCE, ETC.	REPAIR EXIST. STATIONARY UNIT.
W7	1	VERNY IN FIELD	4'-0" x 4'-0"	HERITAGE SERIES STATIONARY UNIT	WOOD WORK, PULLERS, BALANCE, ETC.	REPAIR EXIST. STATIONARY UNIT.
W8	1	VERNY IN FIELD	4'-0" x 4'-0"	HERITAGE SERIES STATIONARY UNIT	WOOD WORK, PULLERS, BALANCE, ETC.	REPAIR EXIST. STATIONARY UNIT.
W9	1	VERNY IN FIELD	4'-0" x 4'-0"	HERITAGE SERIES STATIONARY UNIT	WOOD WORK, PULLERS, BALANCE, ETC.	REPAIR EXIST. STATIONARY UNIT.
W10	1	VERNY IN FIELD	4'-0" x 4'-0"	HERITAGE SERIES STATIONARY UNIT	WOOD WORK, PULLERS, BALANCE, ETC.	REPAIR EXIST. STATIONARY UNIT.

### EXT. DOOR SCHEDULE

NUMBER	QTY	ROOM (DRAWING #)	SIZE (W x H)	TYPE	FINISH	REMARKS
D100	1	EXISTING	3'-0" x 7'-0"	ALUM.	ALUM.	REPAIR EXIST. ALUM. DOOR.
D101	1	EXISTING	3'-0" x 7'-0"	ALUM.	ALUM.	REPAIR EXIST. ALUM. DOOR.
D102	1	EXISTING	3'-0" x 7'-0"	ALUM.	ALUM.	REPAIR EXIST. ALUM. DOOR.
D103	1	EXISTING	3'-0" x 7'-0"	ALUM.	ALUM.	REPAIR EXIST. ALUM. DOOR.
D104	1	EXISTING	3'-0" x 7'-0"	ALUM.	ALUM.	REPAIR EXIST. ALUM. DOOR.
D105	1	EXISTING	3'-0" x 7'-0"	ALUM.	ALUM.	REPAIR EXIST. ALUM. DOOR.
D106	1	EXISTING	3'-0" x 7'-0"	ALUM.	ALUM.	REPAIR EXIST. ALUM. DOOR.
D107	1	EXISTING	3'-0" x 7'-0"	ALUM.	ALUM.	REPAIR EXIST. ALUM. DOOR.
D108	1	EXISTING	3'-0" x 7'-0"	ALUM.	ALUM.	REPAIR EXIST. ALUM. DOOR.
D109	1	EXISTING	3'-0" x 7'-0"	ALUM.	ALUM.	REPAIR EXIST. ALUM. DOOR.
D110	1	EXISTING	3'-0" x 7'-0"	ALUM.	ALUM.	REPAIR EXIST. ALUM. DOOR.

### PRECAST LINTEL SCHEDULE

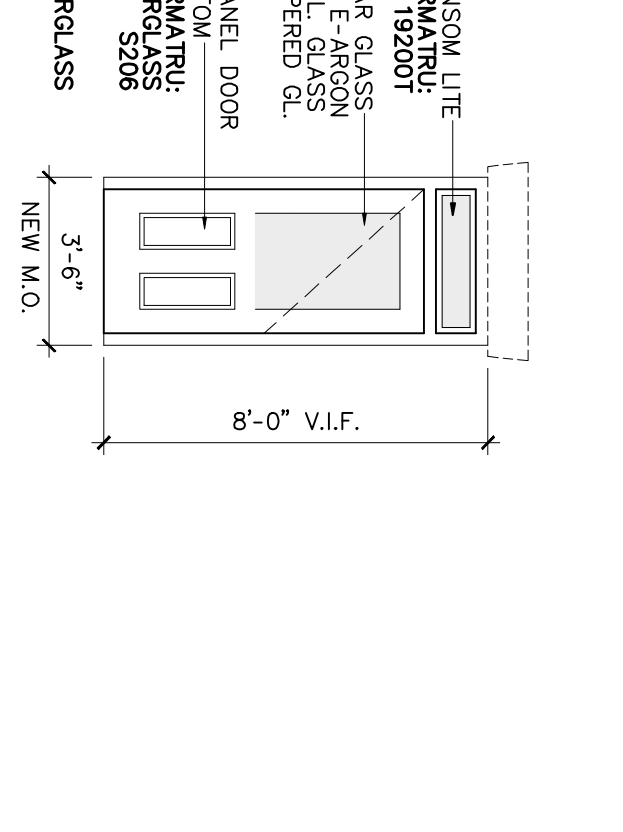
NUMBER	QTY	ROOM (DRAWING #)	SIZE (W x H)	TYPE	FINISH	REMARKS
L1	1	EXISTING	3'-0" x 7'-0"	PRECAST	CONCRETE	REPAIR EXIST. PRECAST LINTEL.
L2	1	EXISTING	3'-0" x 7'-0"	PRECAST	CONCRETE	REPAIR EXIST. PRECAST LINTEL.
L3	1	EXISTING	3'-0" x 7'-0"	PRECAST	CONCRETE	REPAIR EXIST. PRECAST LINTEL.



3 TYP. PRECAST LINTEL SECTION  
SCALE: 1/1/2" = 1'-0"

### DOOR SCHEDULE - second level

UNIT #	ROOM #	ROOM NAME	SIZE (W x H)	TYPE	FINISH	REMARKS
202	1020	UNIT 3	1,020 SF	...	...	...
203	1025	UNIT 4	1,025 SF	...	...	...



### STRUCTURAL/FRAMING NOTES

ALL BEAMS AND HEADERS LISTED IN THE STRUCTURAL DETAILS CHART BELOW MUST HAVE A MINIMUM OF 2" OF TOP BEARING ONTO STEEL FRAMING AND FOR DETAILS ON CONTINUITY OF THIS LOAD PATH.

ALL POSTS/STUDS SUPPORTING NEW BEAMS MUST HAVE A CONTINUOUS BEARING PATH FROM THE SUPPORT OF THE FLOOR THROUGH ALL THE FLOORS AND INTO THE VERNY WHICH CANNOT BE MAINTAINED. THESE LOAD PATHS MUST BE MAINTAINED TO THE CONTINUITY OF THIS LOAD PATH. MUST BE MAINTAINED WITHIN THE FLOOR FROM THE POINT OF BEARING ONTO THE FLOOR.

ALL BEAMS AND HEADERS LISTED IN THE STRUCTURAL DETAILS CHART BELOW MUST HAVE A MINIMUM OF 2" OF TOP BEARING ONTO STEEL FRAMING AND FOR DETAILS ON CONTINUITY OF THIS LOAD PATH.

REPAIR ANY EXISTING FRAMING CONDITIONS WHICH ARE NOT UP TO CURRENT BUILDING CODE REQUIREMENTS. ALL EXISTING FRAMING SHALL BE REINFORCED TO MEET CURRENT BUILDING CODE REQUIREMENTS. ALL EXISTING FRAMING SHALL BE REINFORCED TO MEET CURRENT BUILDING CODE REQUIREMENTS.

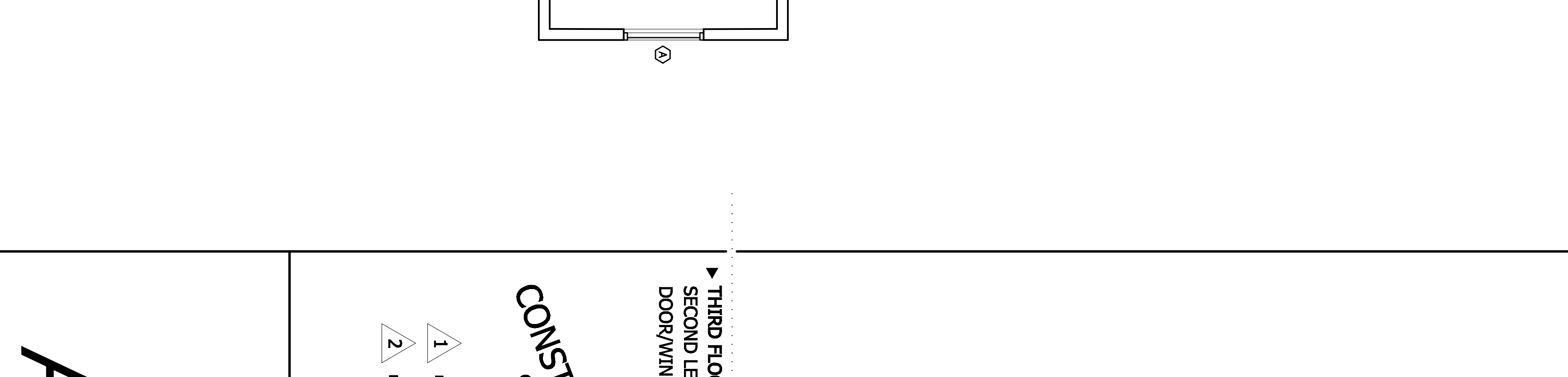
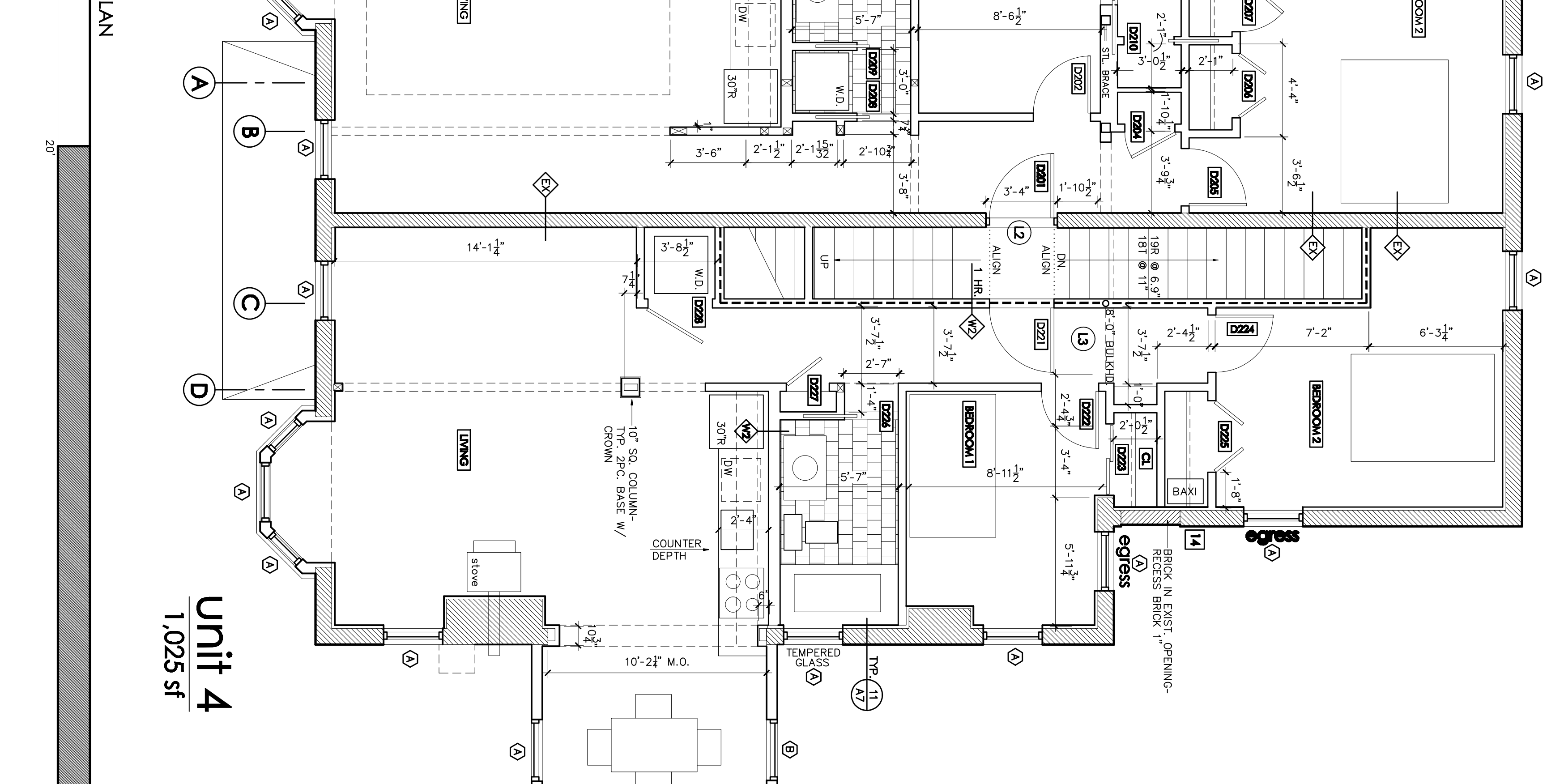
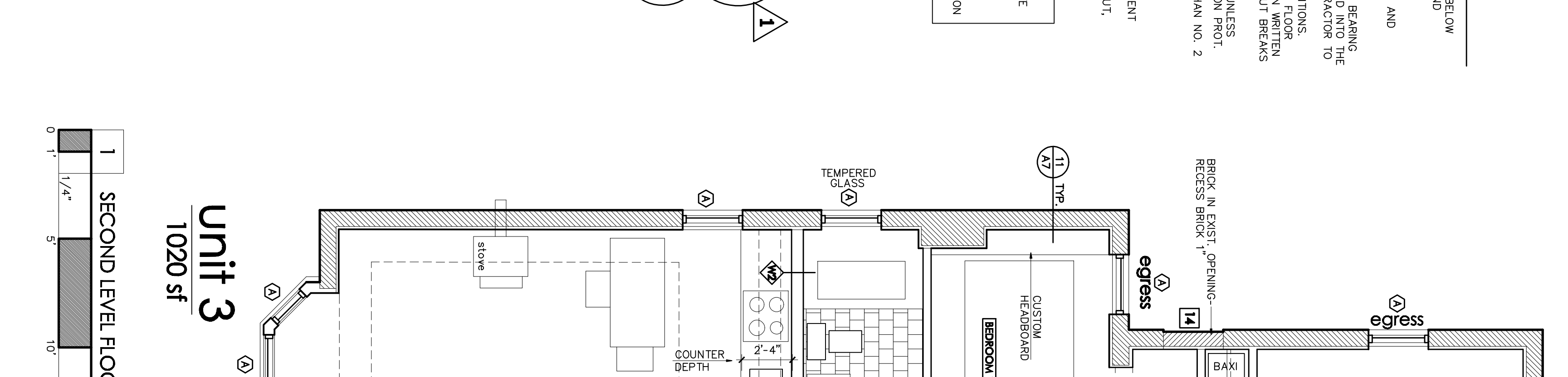
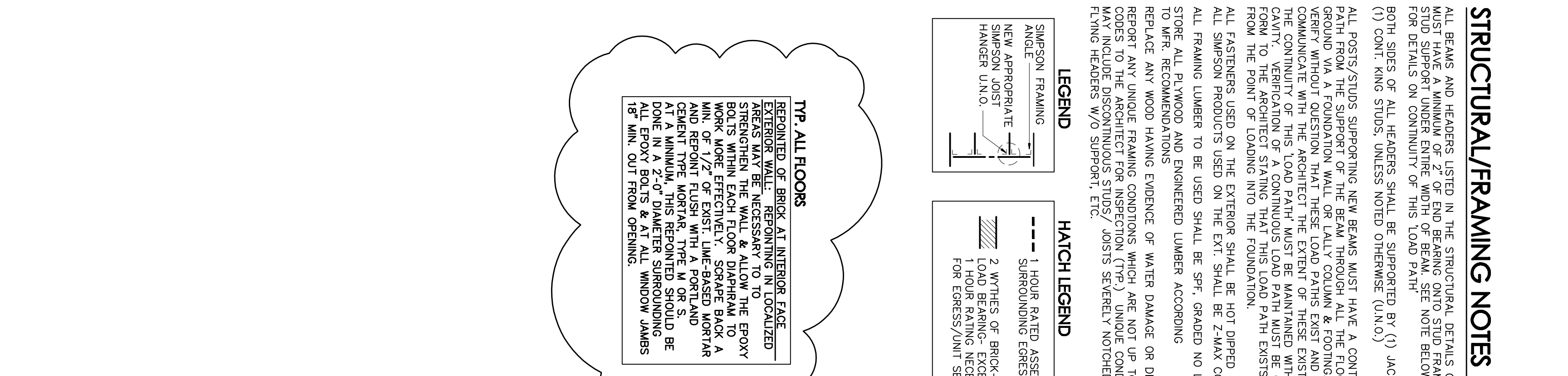
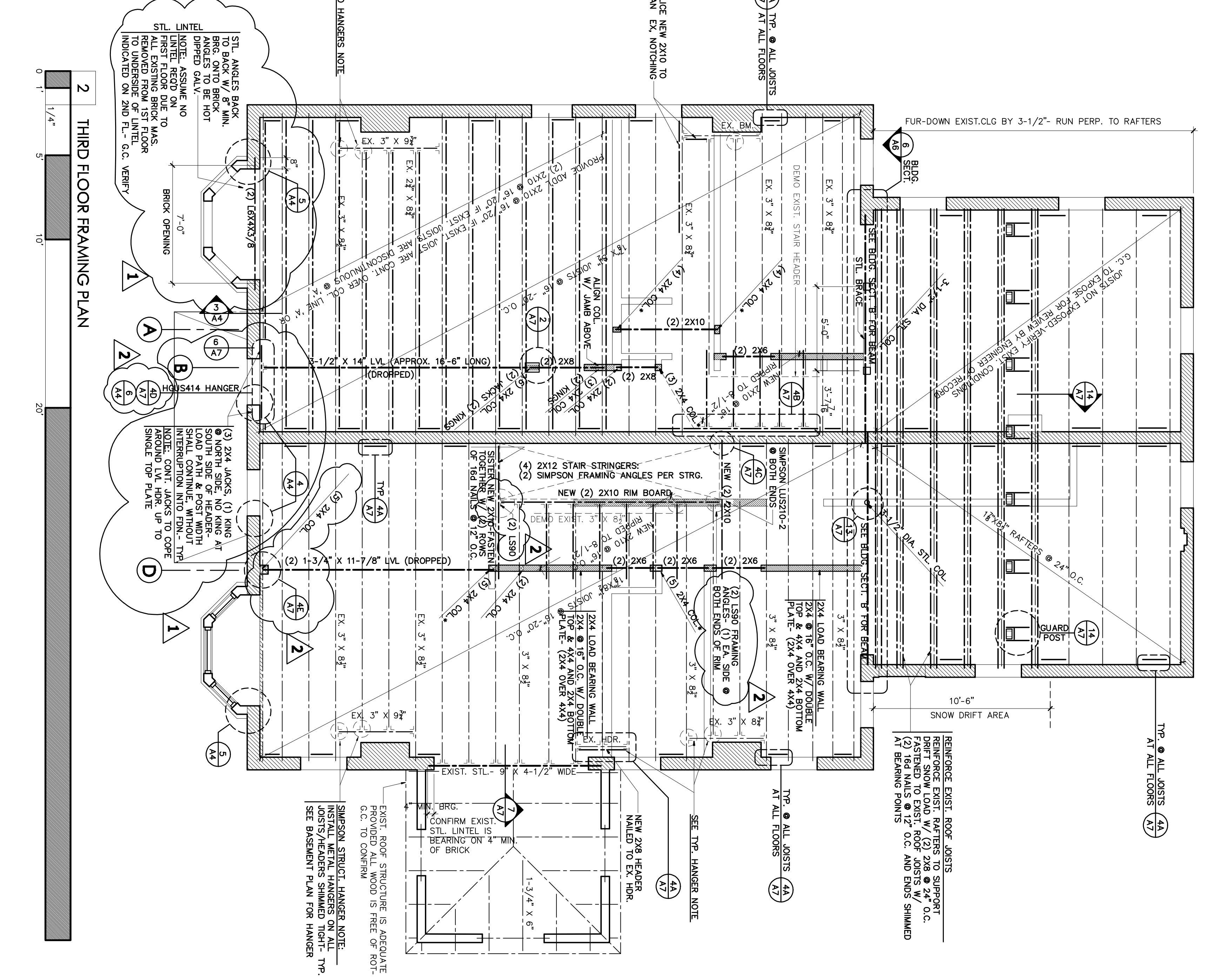
### LEGEND

SIMPSON FRAMING ANGLE  
SIMPSON BRACKET  
SIMPSON HANGER  
SIMPSON POST  
SIMPSON STUD

HATCH LEGEND  
1. BRICK  
2. CONCRETE  
3. GYP. BOARD  
4. INSULATION  
5. FLOORING  
6. CEILING  
7. ROOFING  
8. EXTERIOR FINISH  
9. INTERIOR FINISH  
10. MECHANICAL EQUIPMENT

**STRUCTURAL/FRAMING NOTES**

ALL BEAMS AND HEADERS LISTED IN THE STRUCTURAL DETAILS CHART BELOW MUST HAVE A MINIMUM OF 2" OF TOP BEARING ONTO STEEL FRAMING AND FOR DETAILS ON CONTINUITY OF THIS LOAD PATH.



March 15, 2010  
THIRD FLOOR FRAMING PLAN  
SECOND LEVEL FLOOR PLAN  
DOOR/WIND/LINTEL SCHED.

**CONSTRUCTION SET**

revised Sept. 9, 2010  
revised April 8, 2011

**A3**

CHRISTOPHER M. DELANO  
ARCHITECT

L & L STRUCTURAL ENGINEERING  
ENGINEER  
60 Street, 5, Portland, Maine 04103  
207.776.8800

# 201-203 State Street Condominiums

Condominium Conversion, Portland, Maine