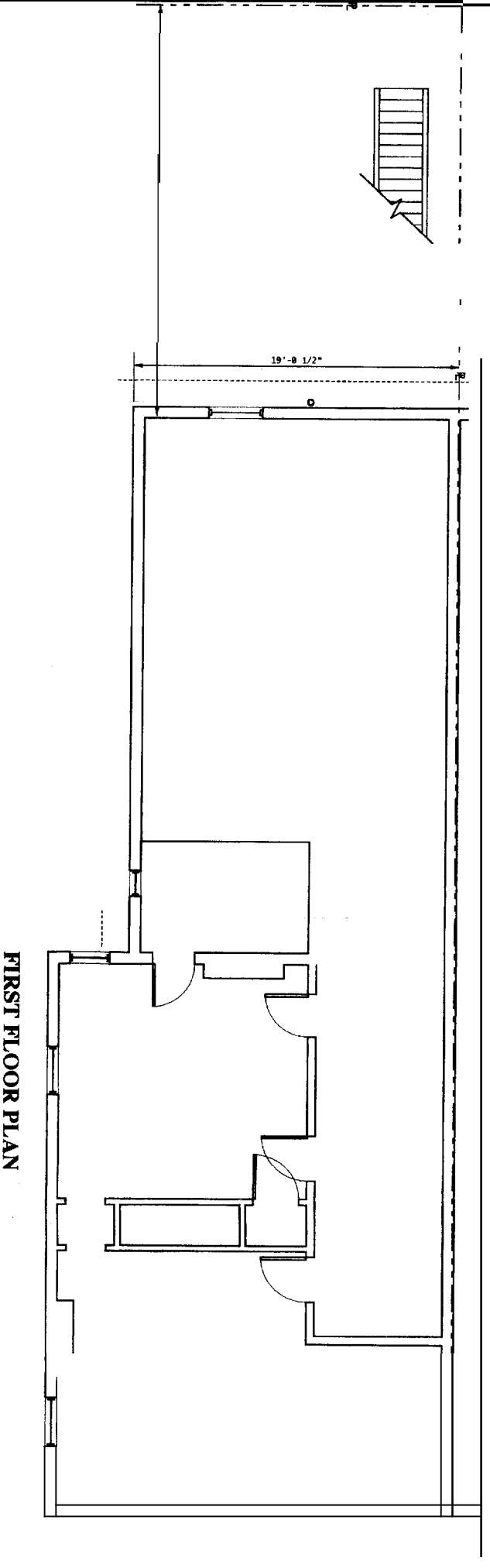
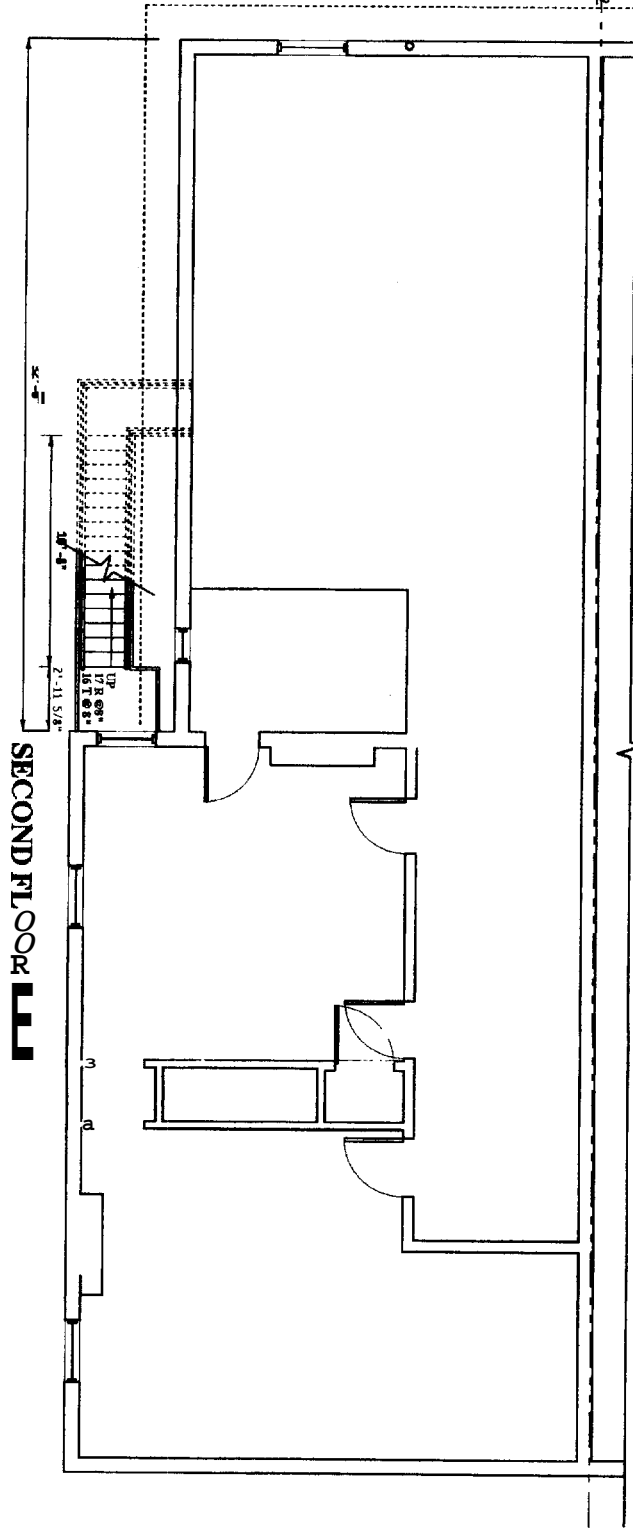
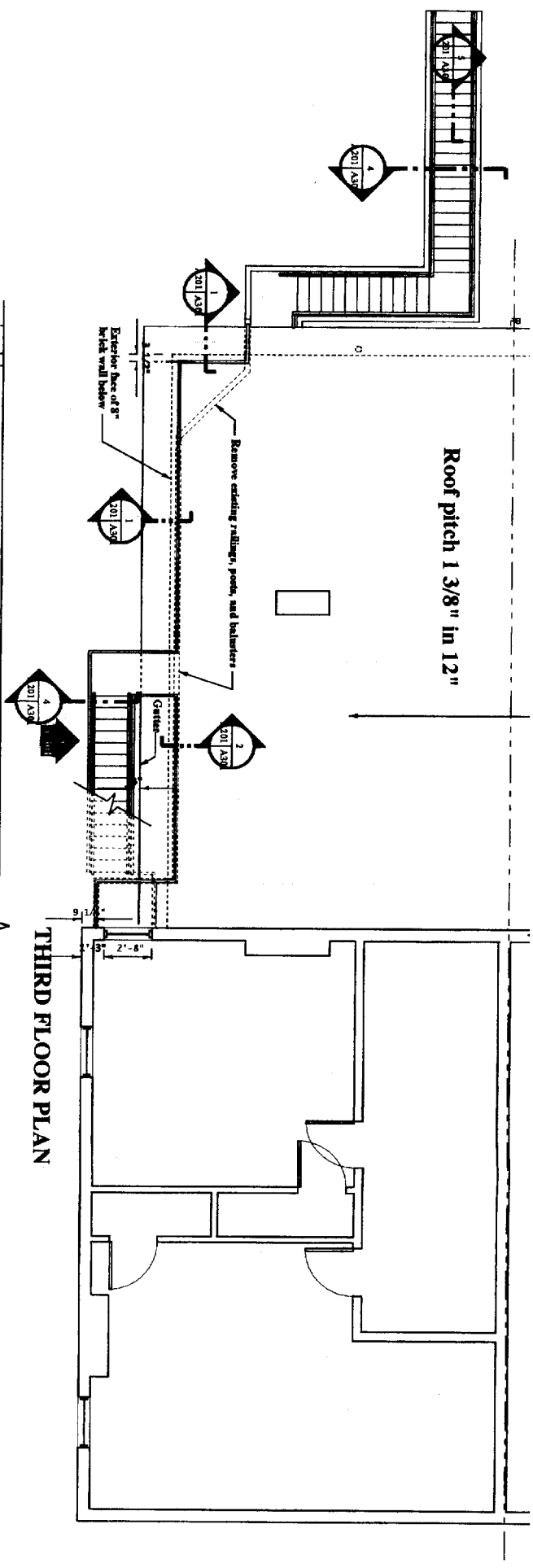


**GENERAL NOTES**

1. Contractor and steel fabricator to verify all vertical and horizontal dimensions in the field.
2. See structural drawings for critical dimensions.
3. All steel shall be shop primed. Use Sherwin Williams Klover-Kote zinc metal primer.
4. All steel and roof slabs, millage, supports, brackets and the like to be painted emulsion black. Use Sherwin Williams DTM 2 extra base. Tricore Black on metal and on wood use oil based primer A-100 with 2 coats later Tricore Black on steel plate.
5. Window No. 28 is to be protected on the interior by a fire rated enclosed walking door with a fire rated exterior door. Manufacturer - Overhead Door Corp. Series 648 rated at 90 minutes. T.L. No. 797-6734
6. The roof shall be pitched using matching materials to the existing EFDW roofing and made water tight.
7. At the end of each working day the roof shall be made water tight.
8. Add I.C.N. door closers to all doors leading to the stair hall.
9. Fire stop all penetrations in walls or ceilings in the stair hall.
10. The contractor's name is Steve Day. Call Phone 671-9443
11. The architect is: Robert E. Sullivan - DBA The Design Alliance, 53 Brook Road, Framingham, MA 01901. Tel: 878-0033. Email: [rsullivan@designalliance.com](mailto:rsullivan@designalliance.com)
12. The steel fabricator is Precision Welding & Fabrication, 960 Streetwater Street, Waltham, MA 02452-8430. The fabricator will provide a separate price for fabrication and installation to the architect. The Owner will pay the fabricator directly.



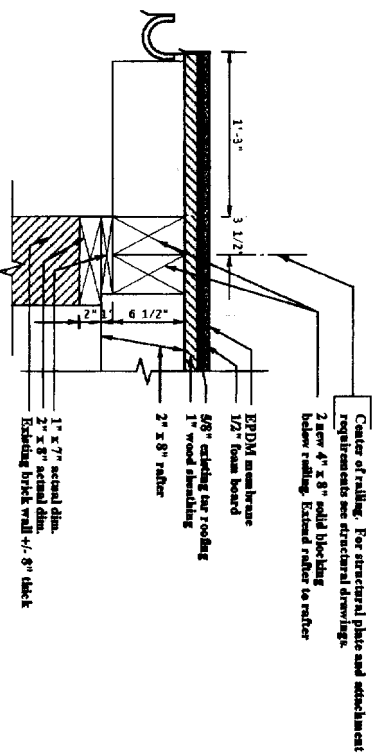
DESCRIPTION:  
**22 DERLING STREET**  
 Fire Escape



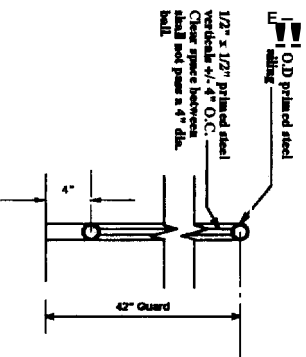
REVISION	DATE	SCALE: 1/4" = 1'-0"	FLOOR PLANS
		DRAWN BY: BEB	
		CHECKED: JLB	
		DATE: APR. 14, 2006	
PROJECT NO.: 20053		<b>A-101</b>	



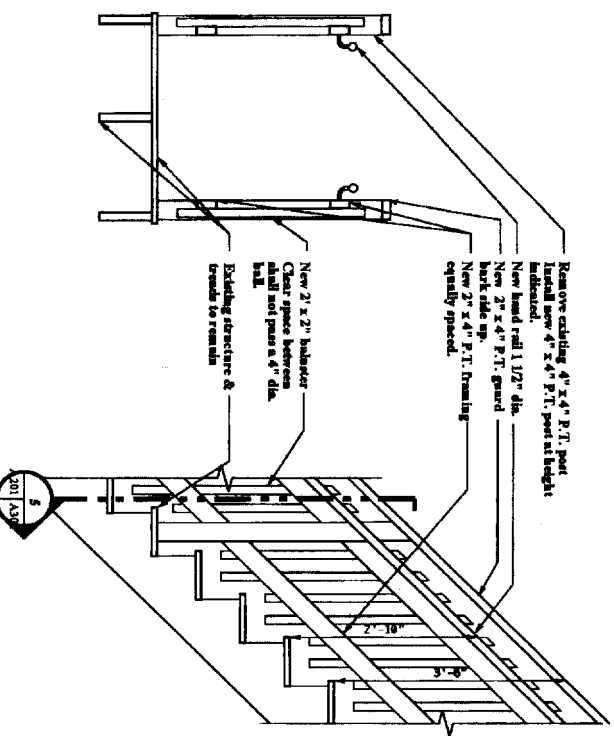




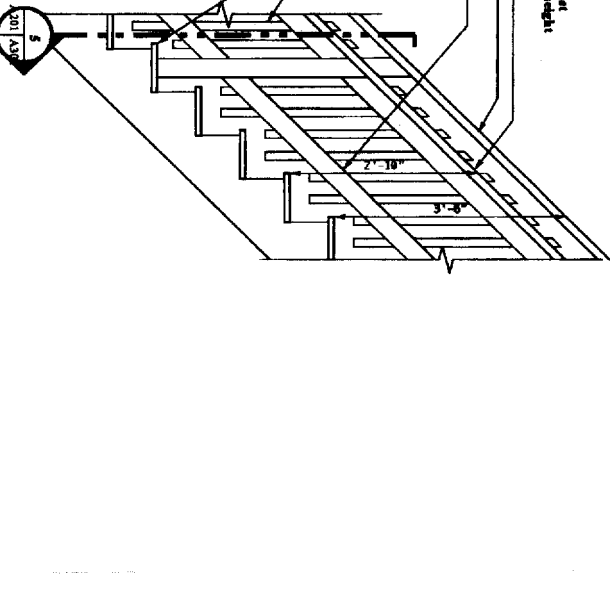
1 ROOF RAILING ATTACHMENT DETAIL  
A-301 SCALE: 1 1/2" = 1'-0"



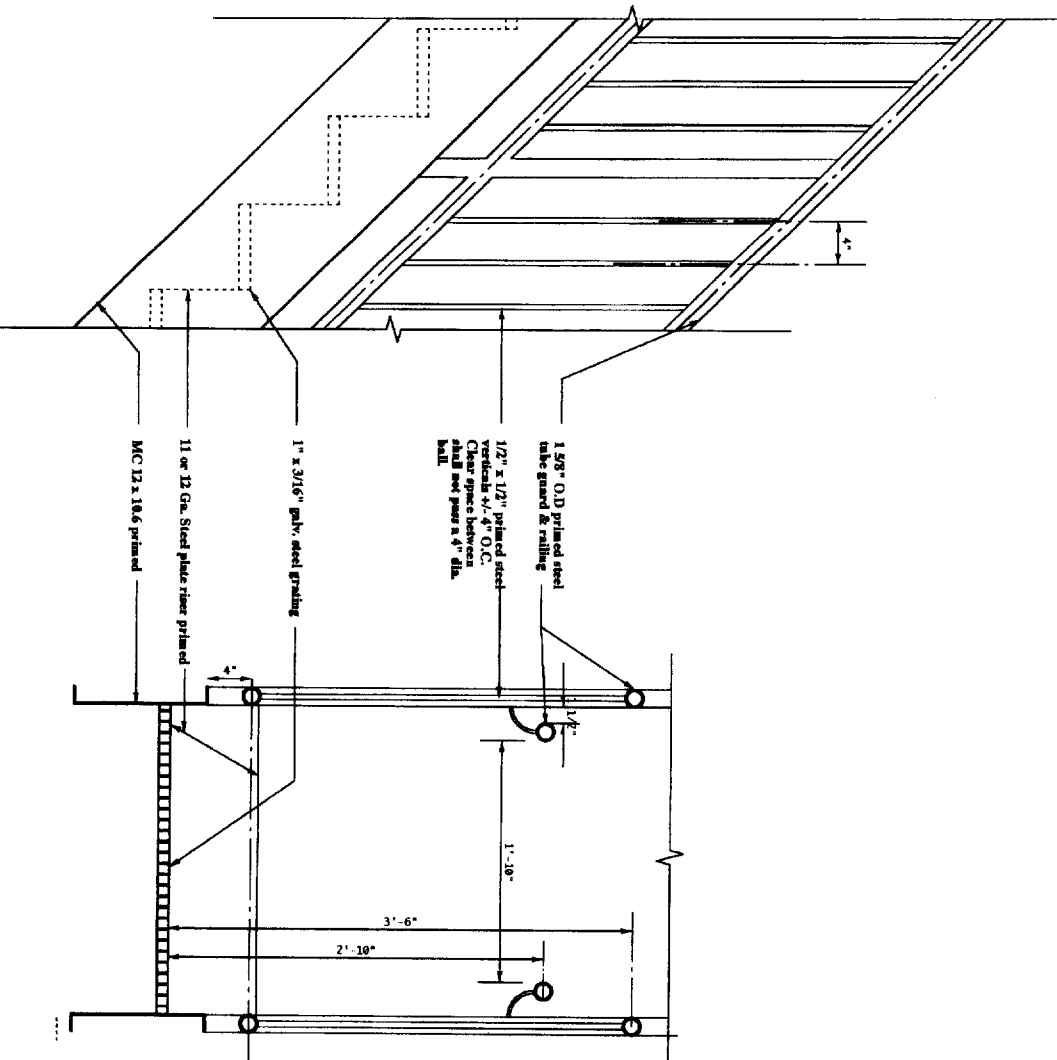
2 ROOF & STAIR RAILING DETAIL  
A-301 SCALE: 1 1/2" = 1'-0"



5 WOOD STAIR SECTION  
A-301 SCALE: 3/4" = 1'-0"



6 WOOD STAIR SECTION/ELEVATION  
A-301 SCALE: 3/4" = 1'-0"



3 STEEL STAIR ELEVATION  
A-301 SCALE: 1 1/2" = 1'-0"

NOTE: SEE DETAIL 2 FOR MATERIALS

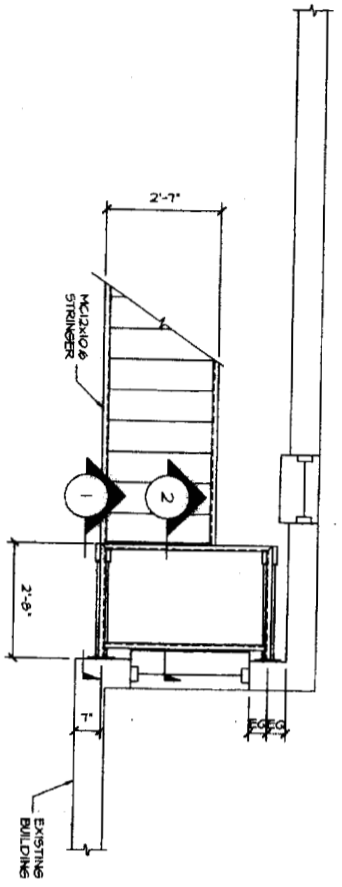
4 STEEL STAIR SECTION  
A-301 SCALE: 1 1/2" = 1'-0"

DESCRIPTION:  
22 DEERING STREET  
Fire Escape



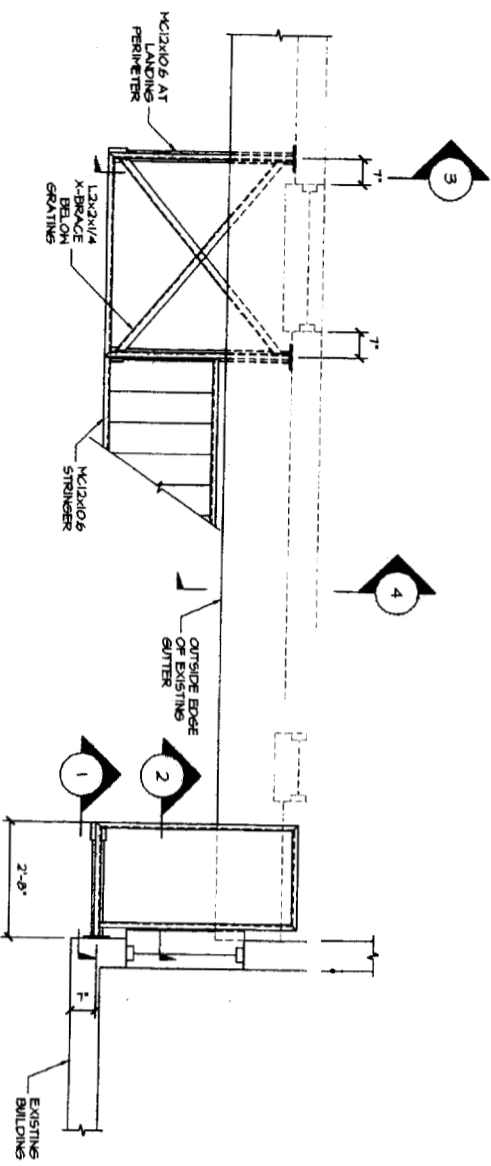
DATE	DETAILS
SCALE AS NOTED	A-301
DRAWN BY: BBS	
CHECKED BY: JLR	
PROJECT NO.: 2003	





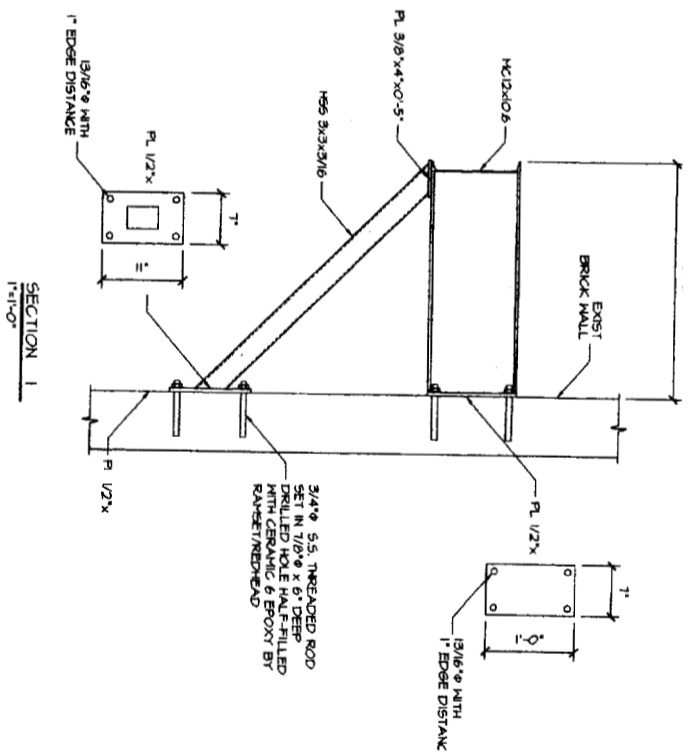
SECOND FLOOR PLAN  
1/2"=1'-0"

FIELD VERIFY ALL DIMENSIONS AND ELEVATIONS BEFORE FABRICATION. LANDING AND STAIR TREADS ARE 1" GALVANIZED GRATING RATED FOR 100 PSF BASED ON LOWEST SPAN. FASTEN ALL GRATING WITH A MINIMUM OF FOUR HOLD-DOWN CLIPS PER SECTION. STAIR RISERS ARE 11 GAUGE PAINTED SHEET STEEL.

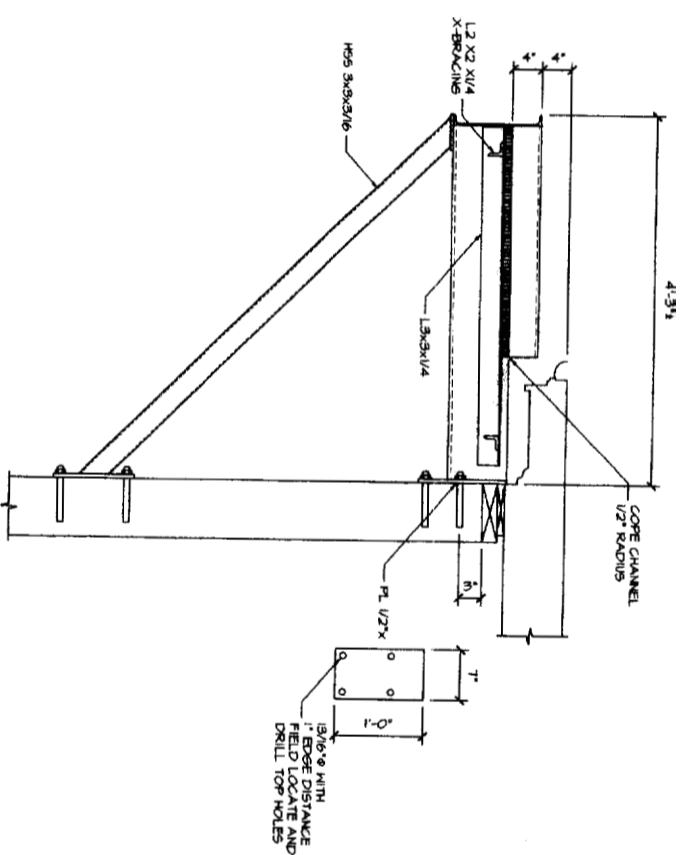


THIRD FLOOR PLAN  
1/2"=1'-0"

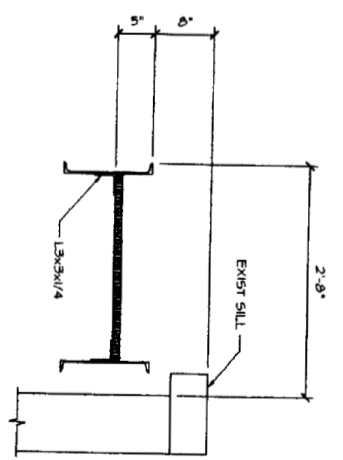
FIELD VERIFY ALL DIMENSIONS AND ELEVATIONS BEFORE FABRICATION. LANDING AND STAIR TREADS ARE 1" GALVANIZED GRATING RATED FOR 100 PSF BASED ON LOWEST SPAN. FASTEN ALL GRATING WITH A MINIMUM OF FOUR HOLD-DOWN CLIPS PER SECTION. STAIR RISERS ARE 11 GAUGE PAINTED SHEET STEEL.



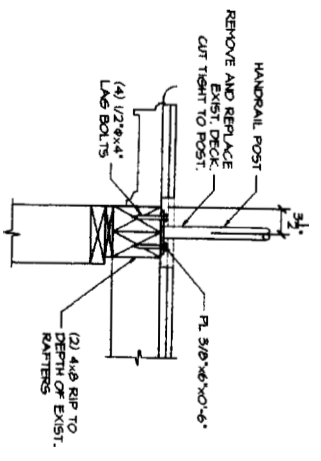
SECTION 1  
1"=1'-0"



SECTION 3  
1"=1'-0"  
SEE SECTION 1 FOR ADDITIONAL INFORMATION



SECTION 2  
1"=1'-0"

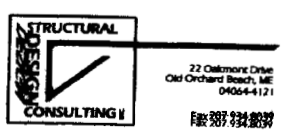


SECTION 4  
1"=1'-0"  
SEE ARCHITECTURAL DRAWINGS FOR RAILPOST LOCATIONS

revision number	date	description
	04/14/06	DESCRIPTION

Structural Plans and Details

FIRE ESCAPE  
22 DEERING STREET  
PORTLAND, MAINE



S1