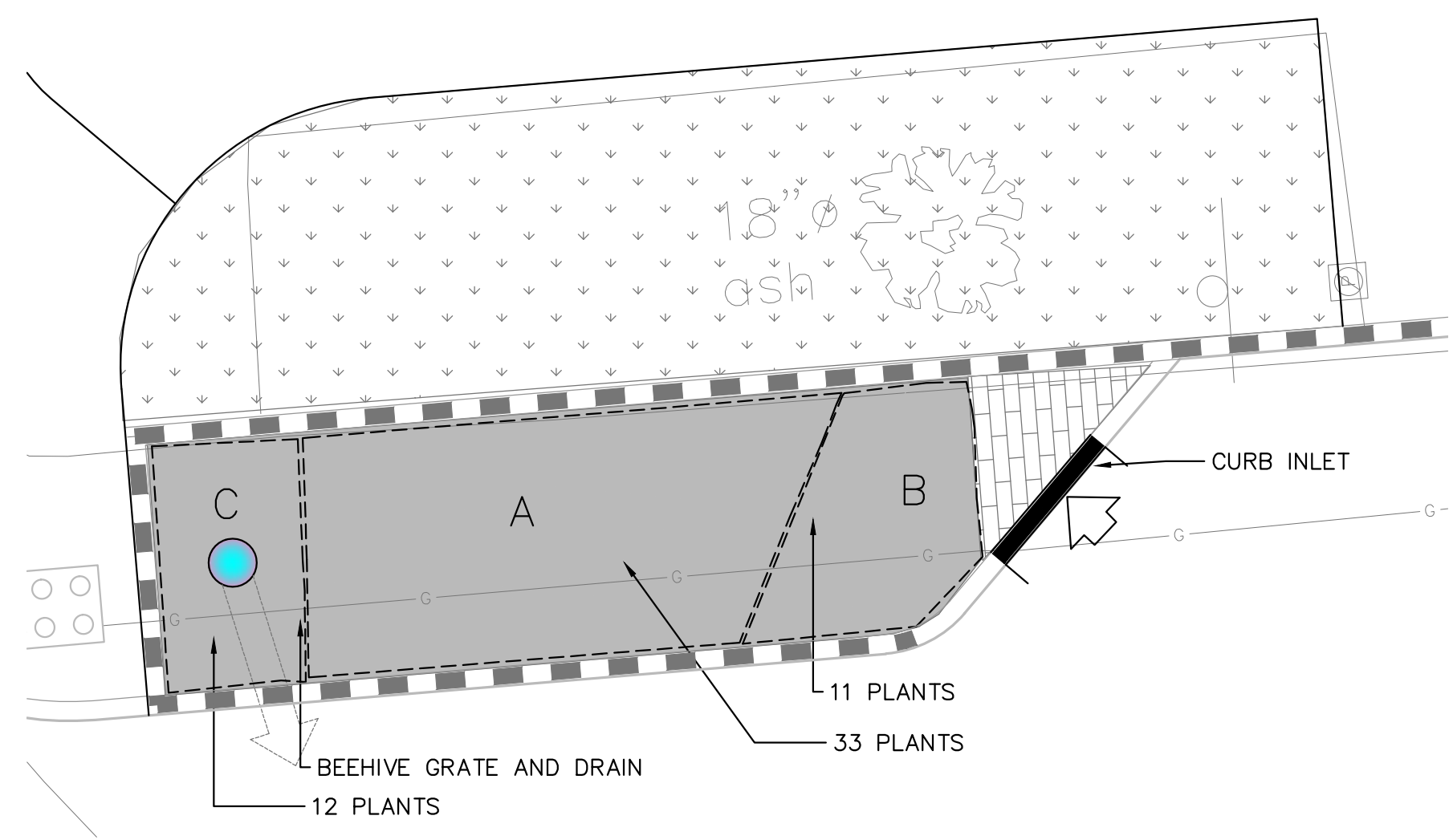
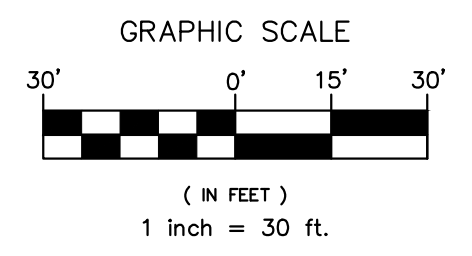
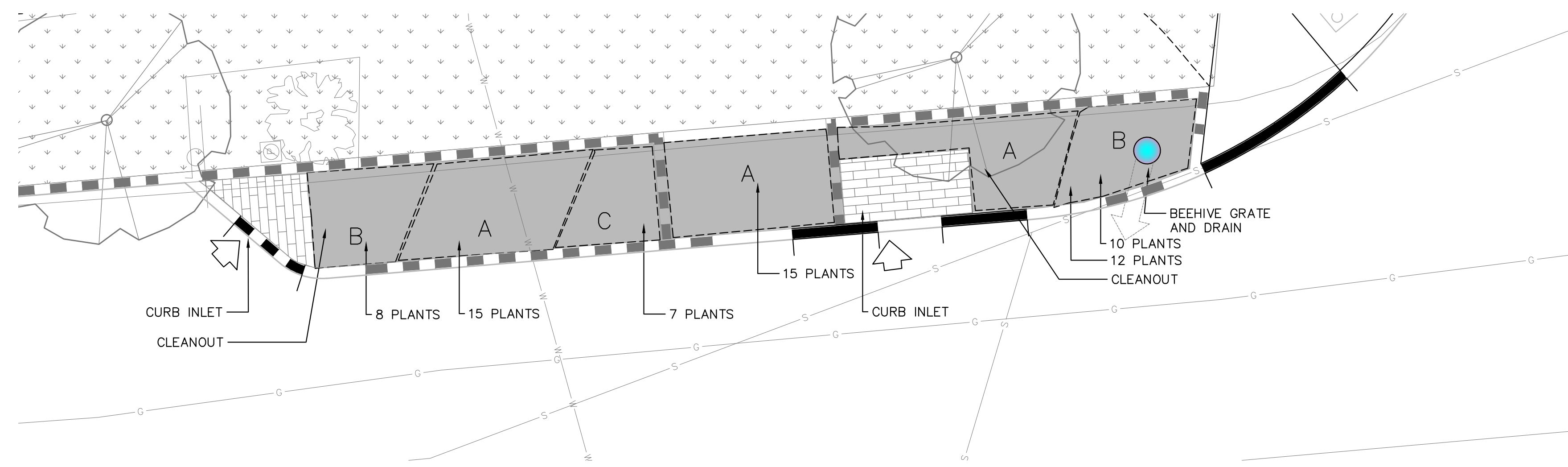


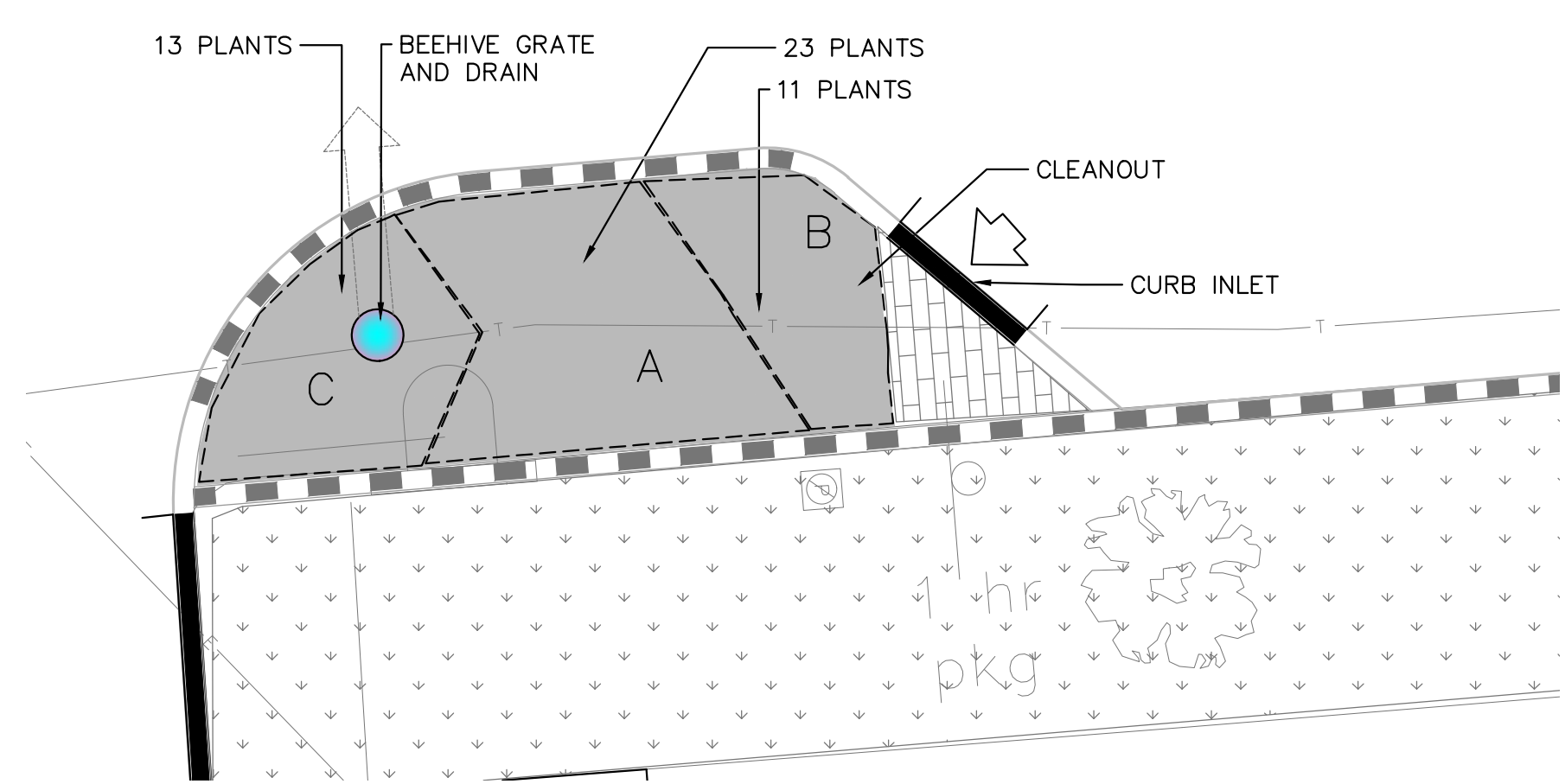
LANDSCAPE PLAN - STATE TO HIGH ST.



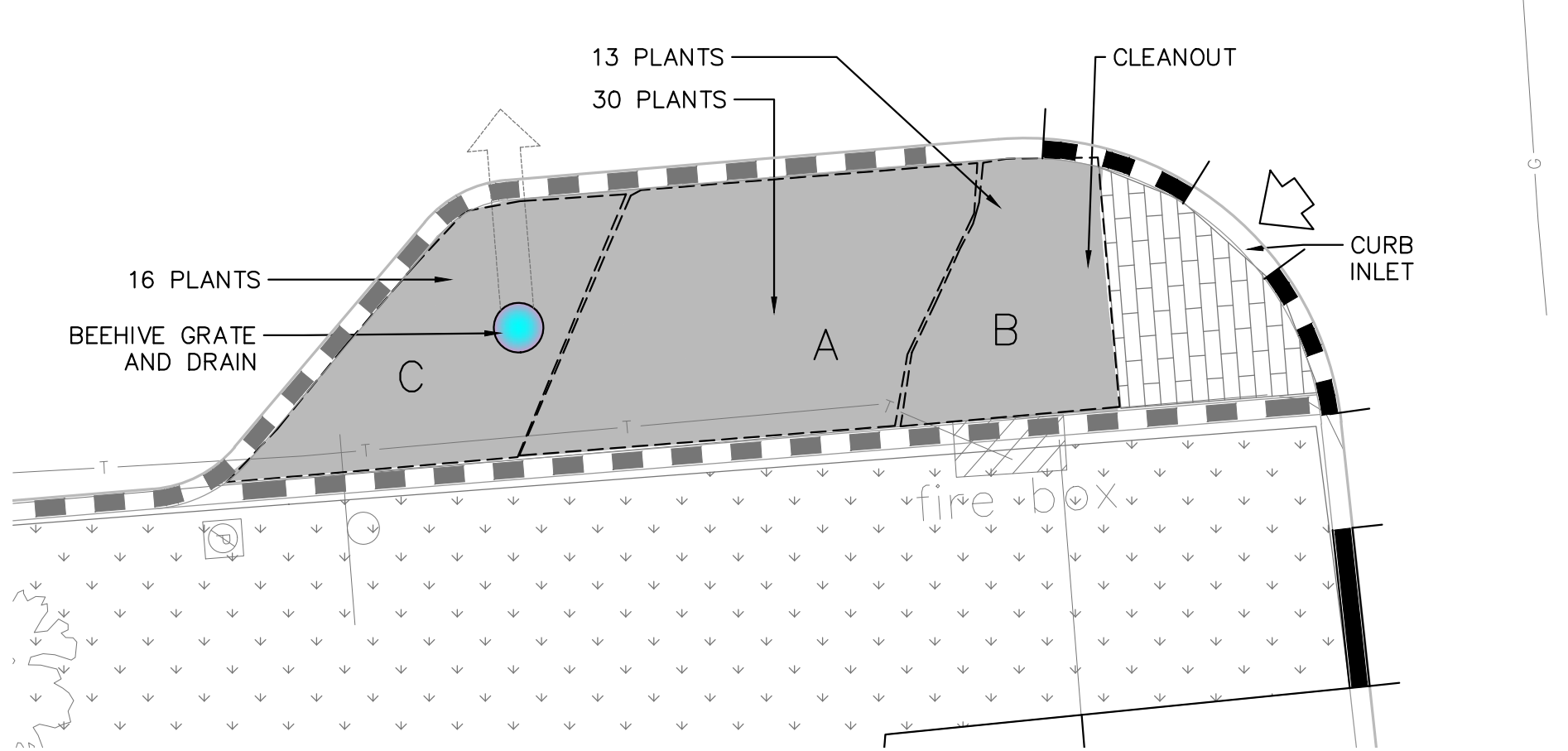
STORMWATER PLANTER N4



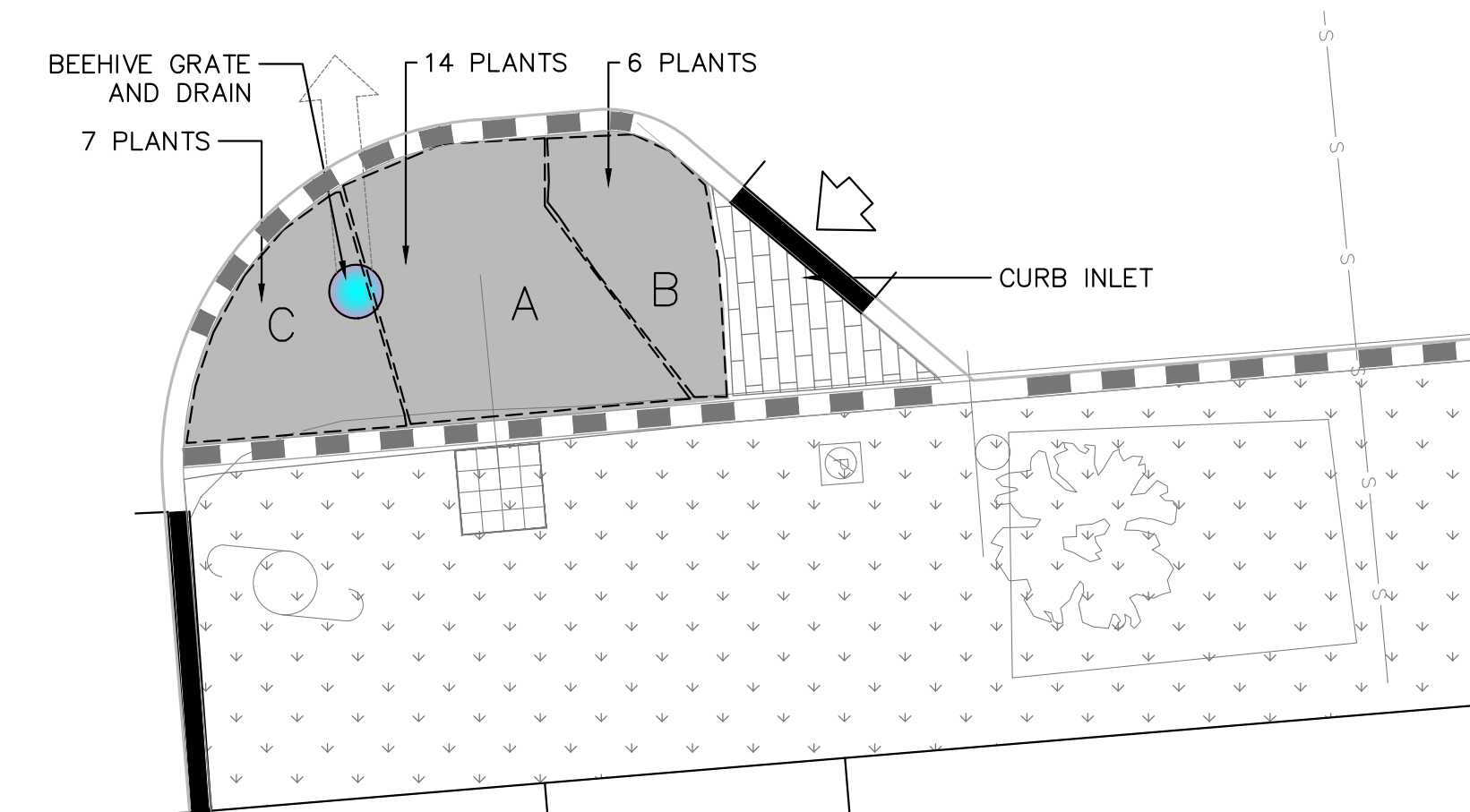
STORMWATER PLANTER N5



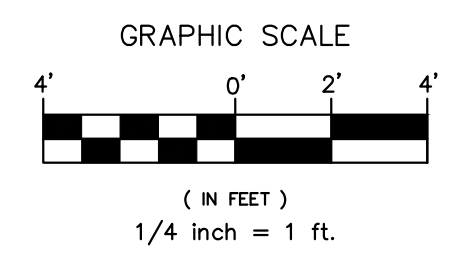
STORMWATER PLANTER S1



STORMWATER PLANTER S2



STORMWATER PLANTER S3



REFERENCES:
 CITY OF PORTLAND: DEERING STREET RECORDS: 2013-08
 PWD (WATER) PLAN: AUG. 20, 2013 GS PLAN
 TELEPHONE PLAN: 171
 CITY CLERK'S STREET RECORDS:
 Mellen St. RECORD 15-165
 HIGH ST. RECORDS 9-225 & 15-266
 HIGH: V.776/464
 FIELD BOOKS: S.248 PP.54-61; S.249 PP.1-49; S1-54
 S.250 PP.1-17; S.251 PP.1-173
 L.836 PP.46-48; T.34 PG.27; T.35 P.173
 TAX MAP: 47
 WORKING PLANS: VOLUME 1, PP. 70, 78 & 92
 SEWER RECORD: SHEET 46
 MAY 9, 2014

DESIGNED BY:
 DRAWN BY:
 RSL
 CHECKED BY:
 WJC, CITY
 SCALE:
 AS SHOWN
 DATE:
 MAY 9, 2014

DEERING STREET SEWER REPAIR
 LANDSCAPE PLANTS AND DETAILS
 STATE STREET TO HIGH STREET

CITY OF PORTLAND, MAINE
 PUBLIC SERVICES DEPARTMENT
 ENGINEERING SECTION

SHEET #
 18 OF 18
 PLAN NUMBER