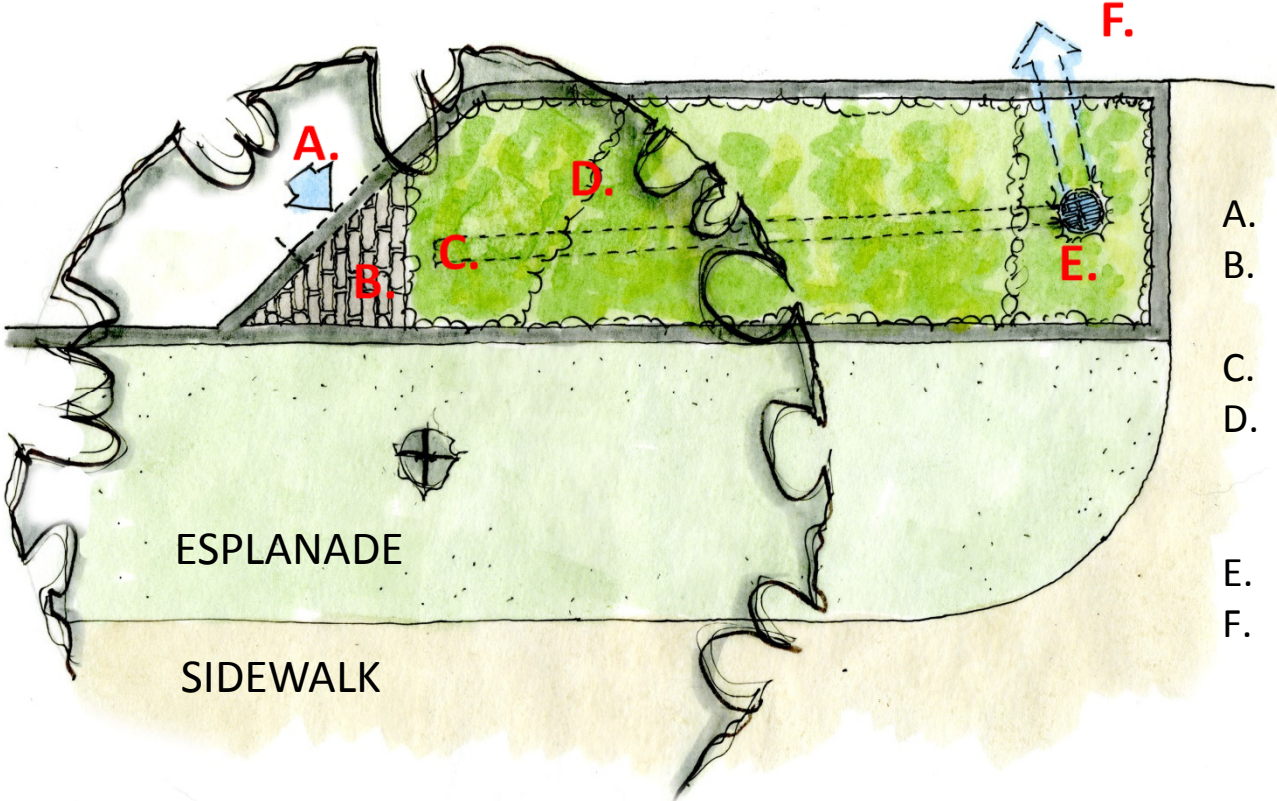




DEERING STREET

(CURRENT "NO PARKING" ZONE)



- A. Curb inlet from street
- B. Inlet stabilization (cobblestones)
- C. Underdrain (below grade)
- D. Infiltration plantings (sedges & grasses below 24" tall) & soil filter media
- E. Beehive grate
- F. Outlet pipe (below grade)