

TM 46-B-9
 N/F
 BURNHAM COURT ASSOC.
 4737-106
 4722/109
 (F/BURNHAM)

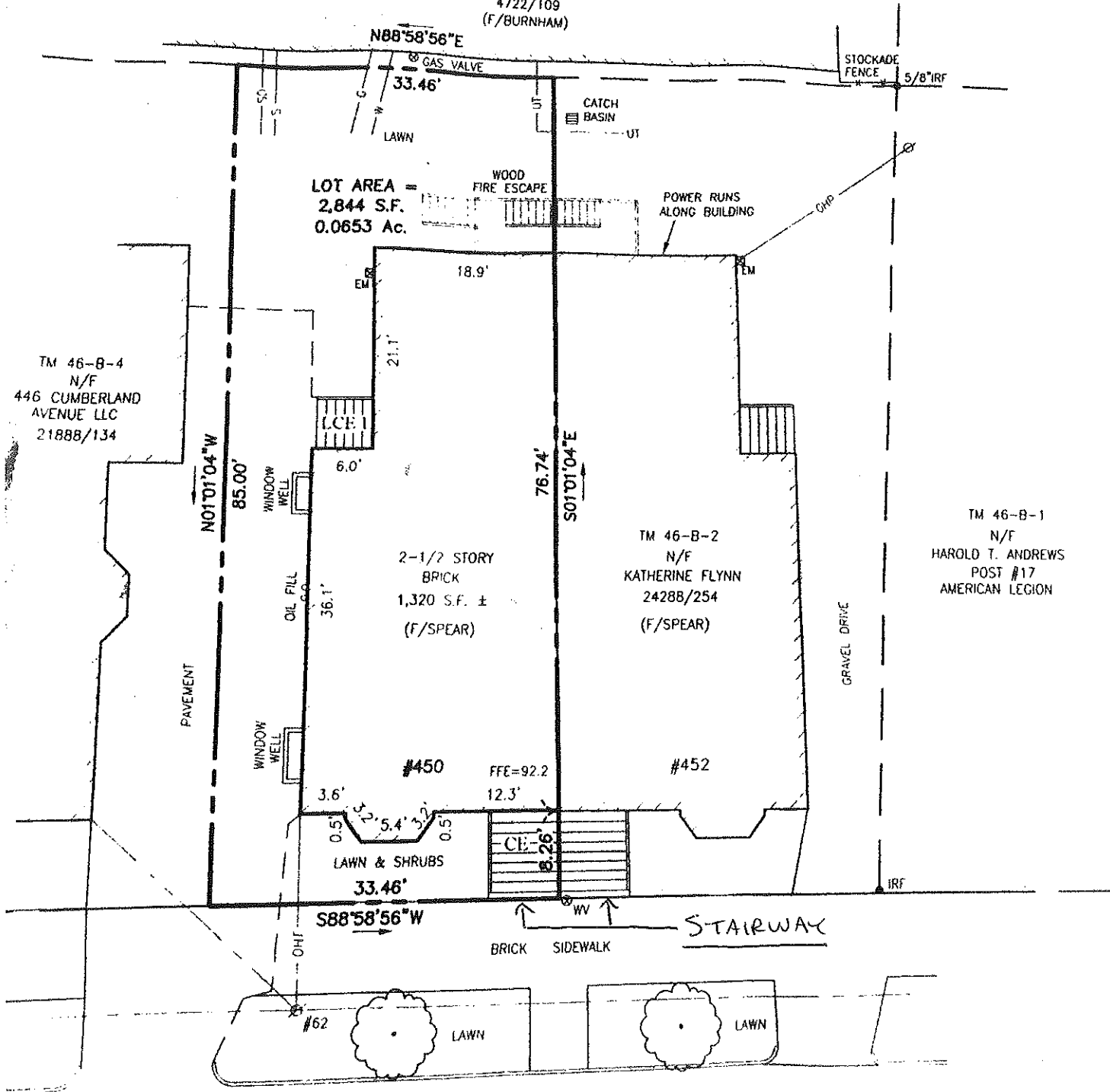
TM 46-B-4
 N/F
 446 CUMBERLAND
 AVENUE LLC
 21888/134

TM 46-B-1
 N/F
 HAROLD T. ANDREWS
 POST #17
 AMERICAN LEGION

TM 46-B-2
 N/F
 KATHERINE FLYNN
 24288/254
 (F/SPEAR)

LOT AREA =
 2,844 S.F.
 0.0653 Ac.

2-1/2 STORY
 BRICK
 1,320 S.F. ±
 (F/SPEAR)



CUMBERLAND AVENUE

PAVED - PUBLIC 66' WIDE

TO AVON STREET

TO HIGH STREET