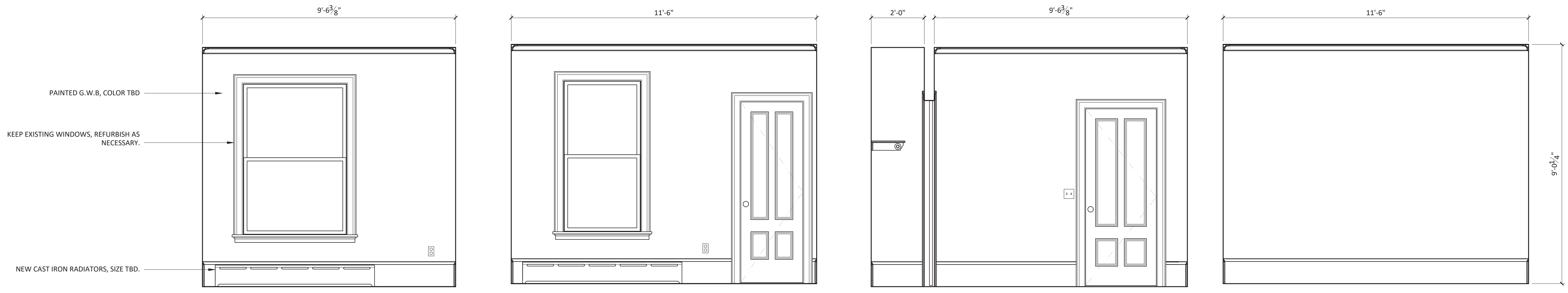


1 BED 203 - WEST
1/2" = 1'-0"

1 BED 203 - NORTH
1/2" = 1'-0"

1 BED 203 - EAST
1/2" = 1'-0"

1 BED 203 - SOUTH
1/2" = 1'-0"

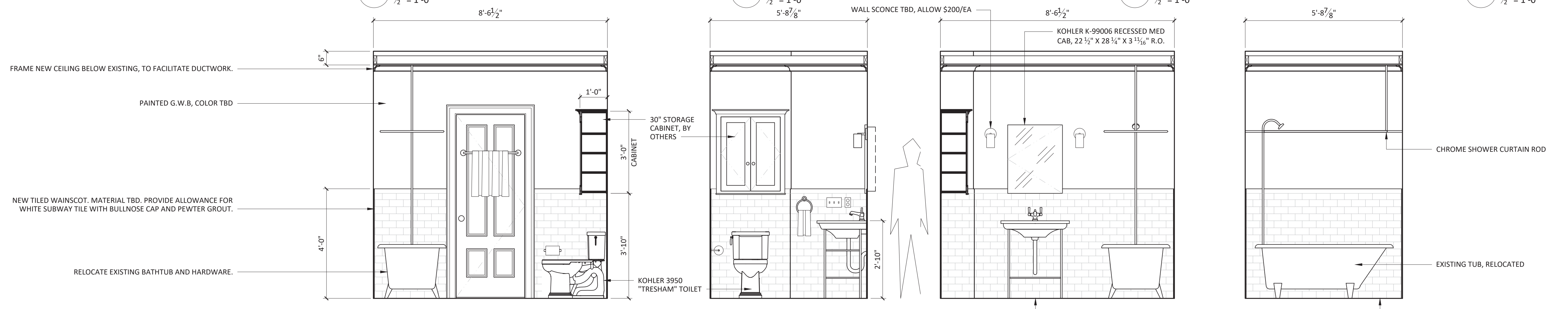


1 BED 204 - WEST
1/2" = 1'-0"

1 BED 204 - NORTH
1/2" = 1'-0"

1 BED 204 - EAST
1/2" = 1'-0"

1 BED 204 - SOUTH
1/2" = 1'-0"



1 BATH 201 - WEST
1/2" = 1'-0"

1 BATH 201 - NORTH
1/2" = 1'-0"

1 BATH 201 - EAST
1/2" = 1'-0"

1 BATH 201 - SOUTH
1/2" = 1'-0"

NOTE:
SEE ATTACHED SCHEDULES FOR FINISHES,
MILLWORK, AND PLUMBING FIXTURES

Legend:
Construction to be removed

