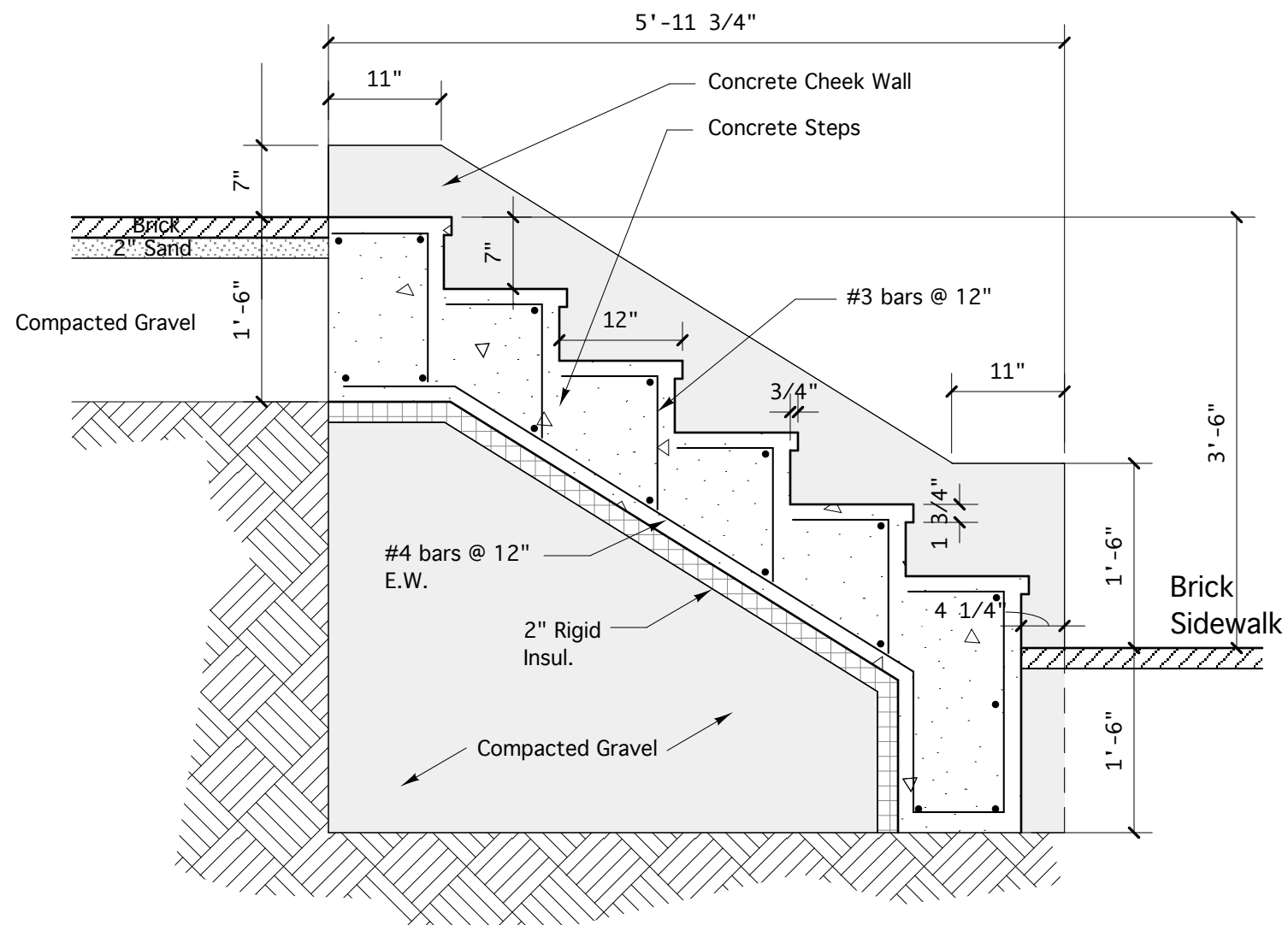


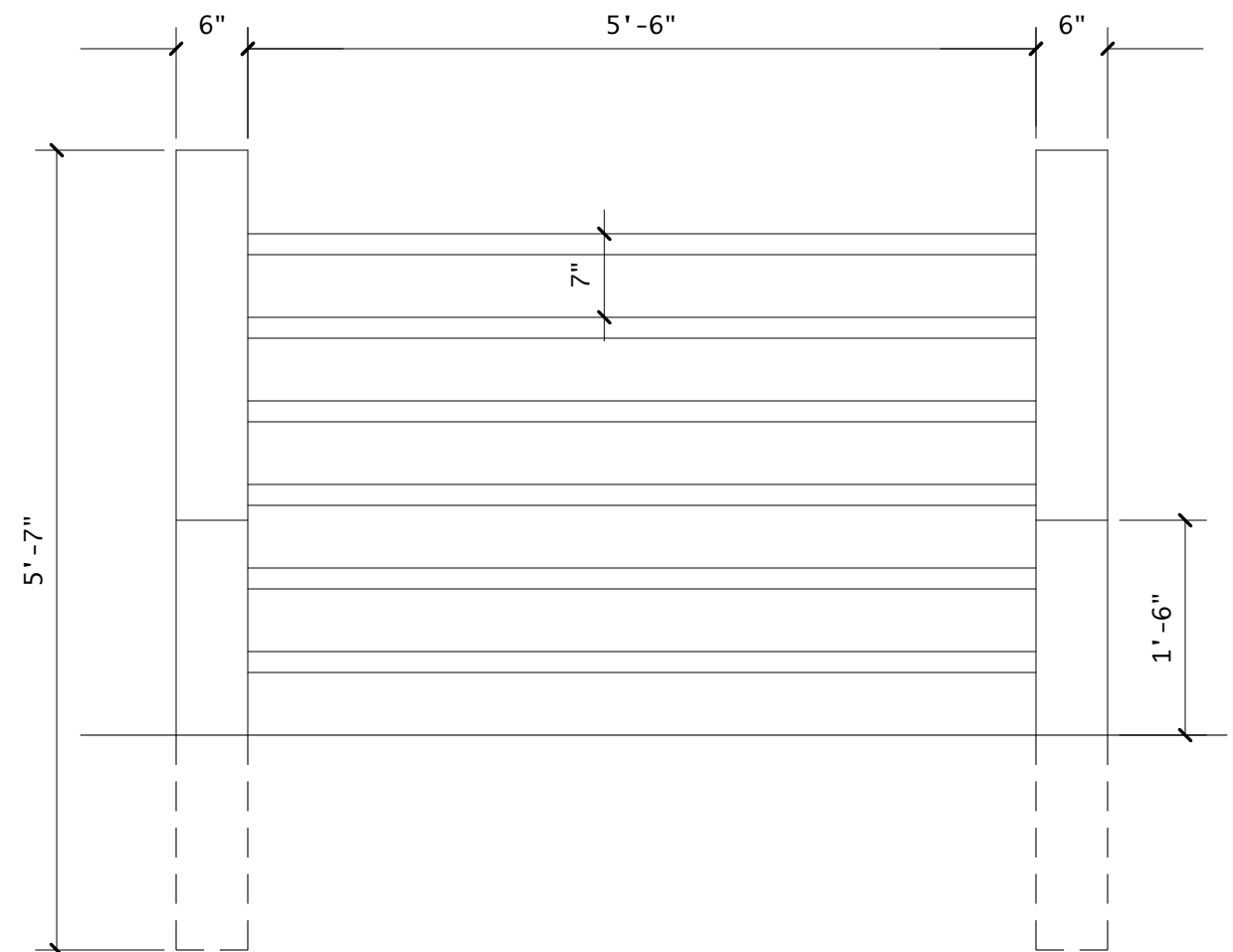
SITE PLAN

3/16" = 1'-0"



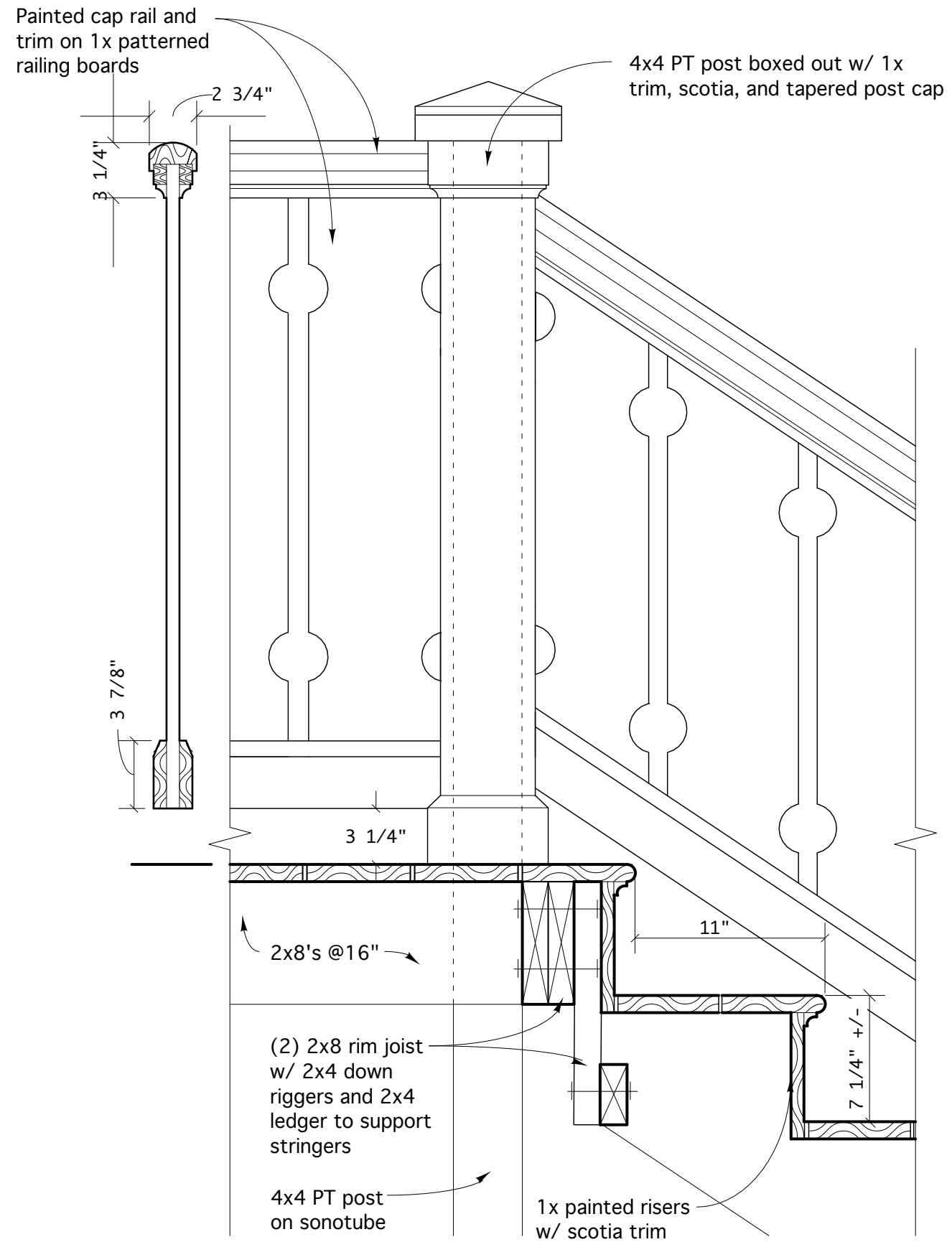
SECTION AT PROPOSED CAST-IN-PLACE CONCRETE STEPS

3/4" = 1'-0"



ELEVATION AT PROPOSED CAST-IN-PLACE CONCRETE STEPS

3/4" = 1'-0"



TYPICAL STAIR RAIL SECTION

PREVIOUSLY APPROVED FOR BACK ENTRY

1 1/2" =1'-0"



EXISTING STAIR AT BACK ENTRY