



GRANT HAD

ASSOCIATI

ARCHITECTS & ENGINEERS  
100 SOUTH BROADWAY  
SUITE 200  
NEW YORK, NY 10038  
201.277.1800

7/01



REVIEW

PROJECT NAME

BLUE/RVY/CONDOMINIUM

MADE FOR RECORD OWNER  
FRANCIS R. COUNTER

PORTLAND, MAINE

THIRD FLOOR PLAN

DATE: 03-22-2017

SCALE: NONE

DESIGNER: JAM/MTM

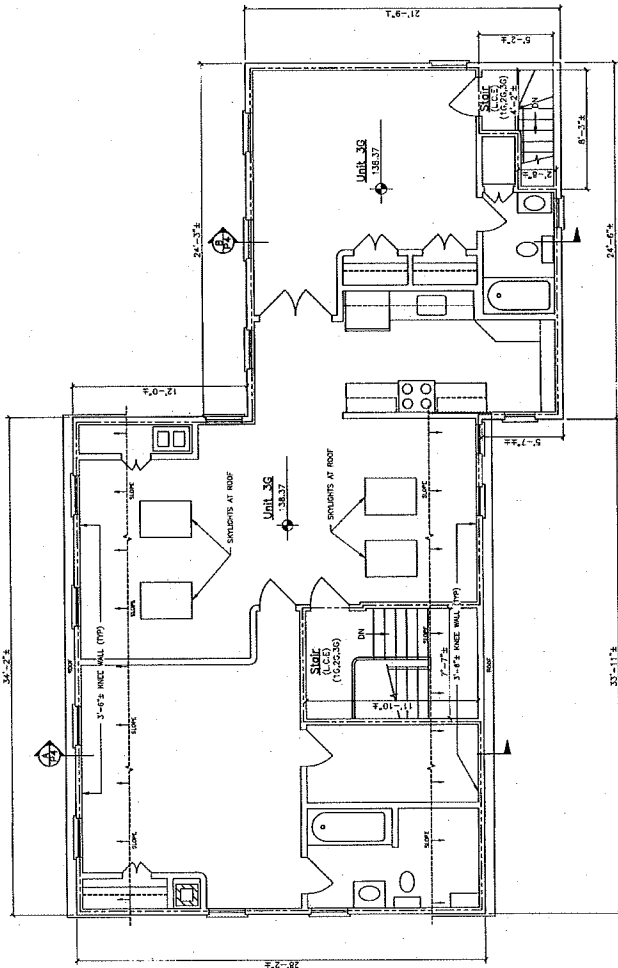
PROJECT NO.: 170317

PROJECT

P3

CONTRACT NO. 170317-03  
PROJECT NO. 170317-03  
PROJECT NAME: BLUE/RVY/CONDOMINIUM  
PROJECT LOCATION: PORTLAND, MAINE  
PROJECT CONTACT: JAM/MTM

NOTE:  
ALL DIMENSIONS ARE FOR REFERENCE USE ONLY.



**THIRD FLOOR PLAN**  
 TOTAL LIFE AREA ON THIRD FLOOR  
 UNIT 302 = TOTAL AREA 1307 SQ. FT.  
 L.C.E. = TOTAL AREA 1311 SQ. FT.

LEGEND	
	CLOSING PARTITIONS
	SLOPED CEILING LINE
	BUILDING CROSS SECTION
	SHAFT
	DATUM ELEVATION

ABBREVIATIONS:  
 (COMMON) = COMMON ELEMENT  
 (L.C.E.) = LIMITED COMMON ELEMENT