

P.E.: MICHAEL E. TADEMA-WIELANDT  
DATE: 4/25/17

NO.	DATE	REVISIONS	BY
1	4-25-2017	SUBMITTED TO CITY OF PORTLAND FOR REVIEW	MTW

565 CONGRESS STREET  
SUITE 310  
PORTLAND, ME 04102

P.O. BOX 339  
111 ELDERBERRY LANE  
NEW GLOUCESTER, ME 04260

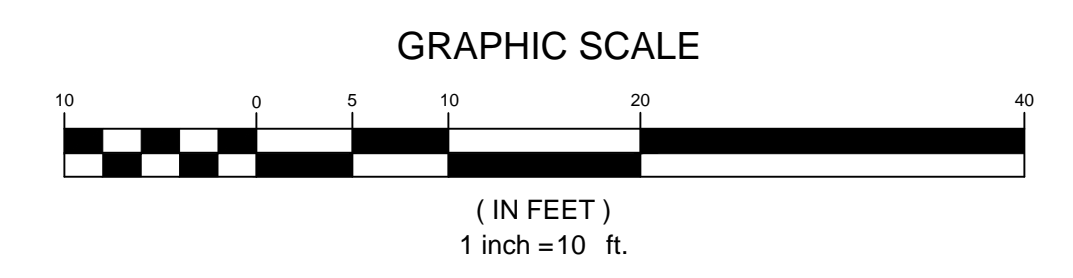
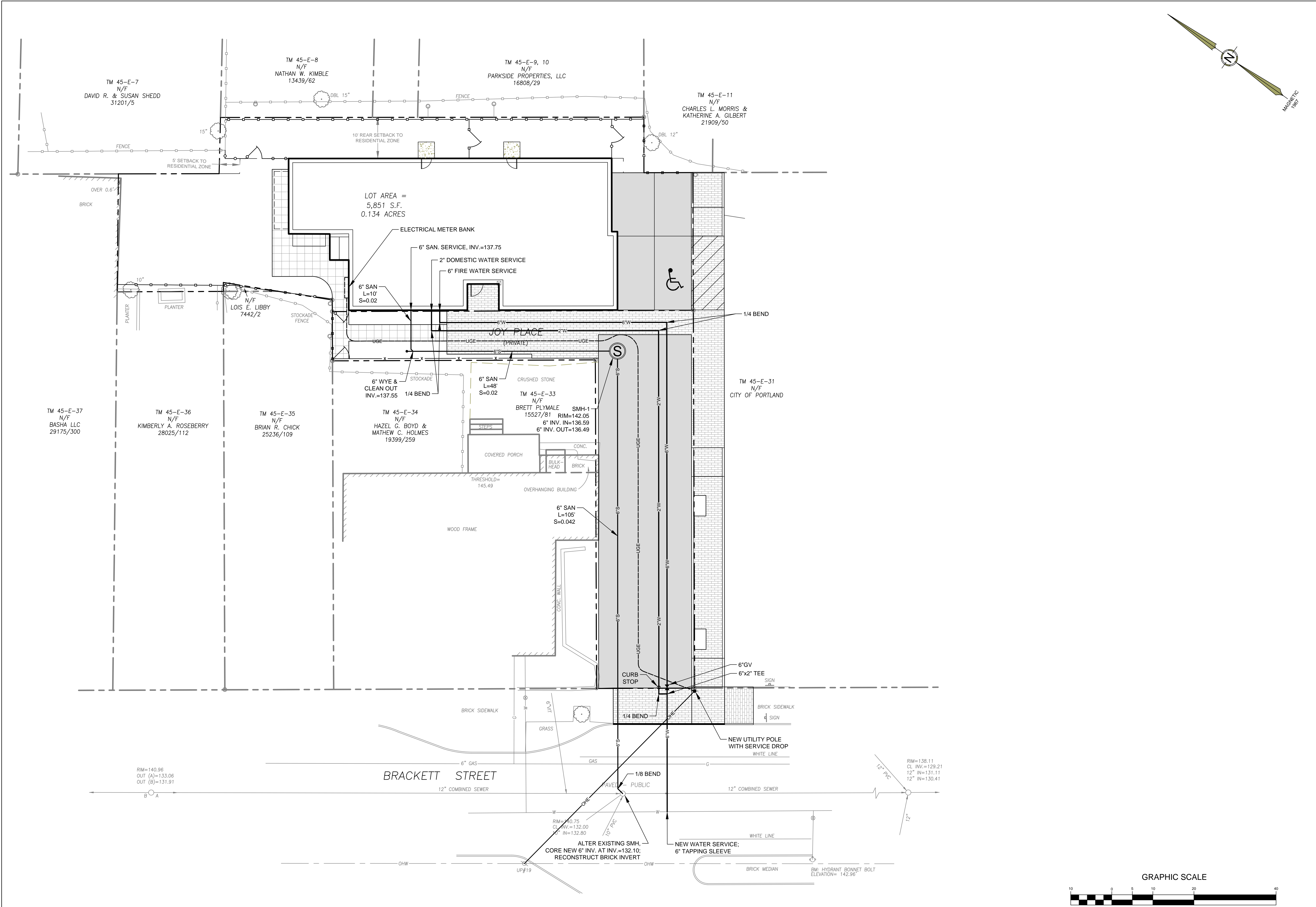
OFFICE: (207) 926-5111 FAX: (207) 221-1317  
www.terradynconsultants.com

**TERRADYN**  
CONSULTANTS, LLC  
Civil Engineering - Land Planning - Stormwater Design - Environmental Permitting

SHEET DESCRIPTION  
**ONEJOY PLACE**  
1 JOY PLACE, PORTLAND, MAINE 04102  
**UTILITY PLAN**

PREPARED FOR  
**ONEJOY PLACE, LLC**  
C/O RENEWAL HOUSING ASSOCIATES, LLC  
2 UNION STREET, 5TH FLOOR  
PORTLAND, MAINE 04101

DATE: 3/7/2017  
SCALE: 1" = 10'  
DESIGNED: MTW  
JOB NO: 1704  
FILE: 1704-BASE.DWG  
SHEET **C-5.0**



**PRELIMINARY - NOT FOR CONSTRUCTION**