

P.E.: MICHAEL E. TADMARA-WIELANDT  
DATE: 4/25/17

NO.	DATE	REVISIONS	MTW	APP'D BY
1	4-25-2017	SUBMITTED TO CITY OF PORTLAND FOR REVIEW		

505 CONGRESS STREET  
SUITE 310  
PORTLAND, ME 04102

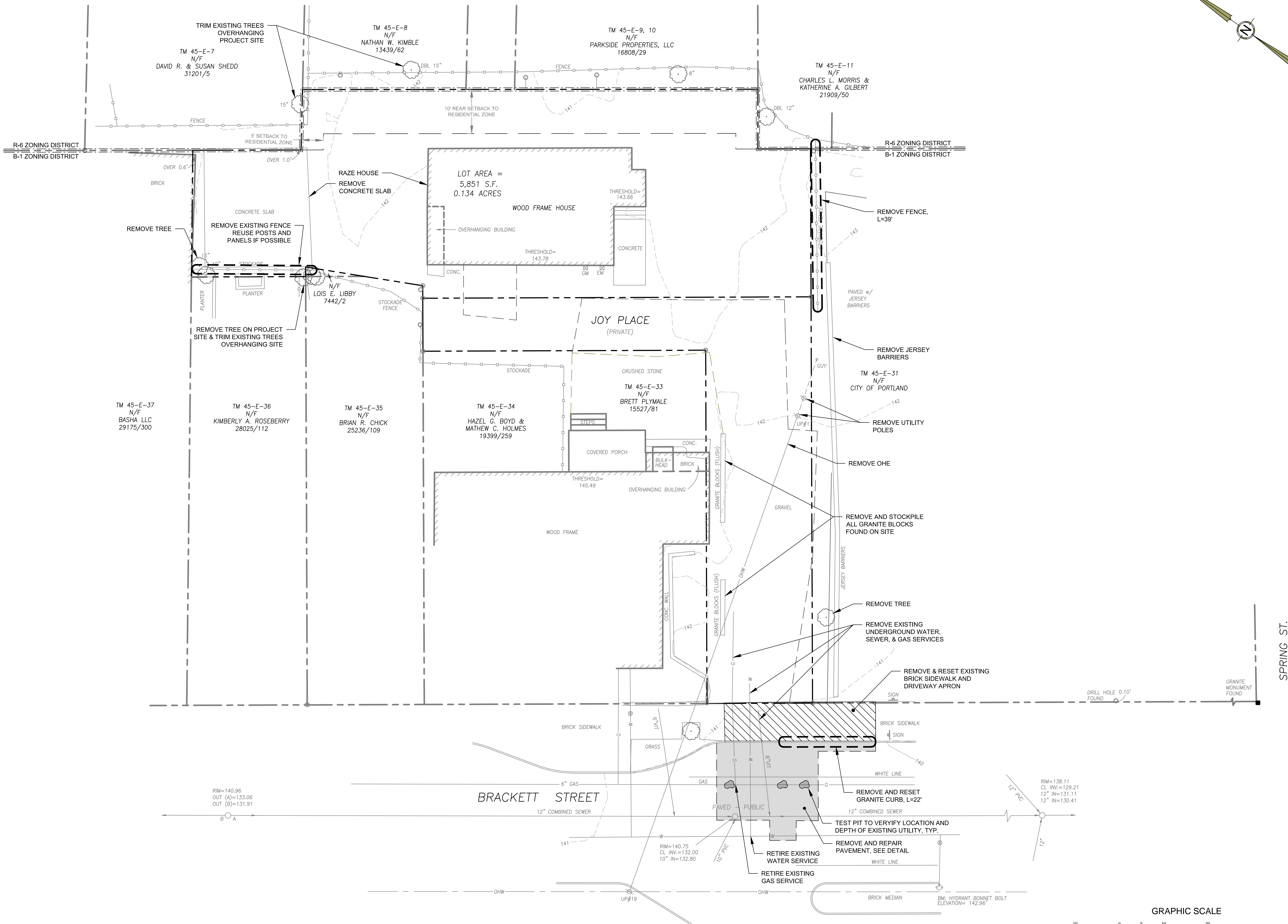
P.O. BOX 830  
111 ELDERRIDGE LANE  
NEW GLAUCHESTER, ME 04280

OFFICE: (207) 926-5111 FAX: (207) 221-1317  
www.terradynconsultants.com

**TERRADYN**  
CONSULTANTS, LLC

Civil Engineering - Land Planning - Stormwater Design - Environmental Permitting

SHEET DESCRIPTION <b>ONE JOY PLACE</b> 1 JOY PLACE, PORTLAND, MAINE 04102 <b>EXISTING CONDITIONS &amp; REMOVALS</b> PREPARED FOR <b>ONE JOY PLACE, LLC</b> C/O RENEWAL HOUSING ASSOCIATES, LLC 2 UNION STREET, 5TH FLOOR PORTLAND, MAINE 04101	DATE:	3/7/2017
	SCALE:	1"=10'
	DESIGNED:	MTW
	JOB NO:	1704
FILE:	1704-EC.DWG	
SHEET	<b>C-2.2</b>	



SPRING ST.

