

PRELIMINARY - NOT FOR CONSTRUCTION

Cimarron CL1S Pedestrian Site Lighting

Stylish vertically finned die-cast solid top housing and lower heat sink optimize heat dissipation.

- Decorative integral arm houses two stage rings mechanism
- Features quick-mount plate and quick-connect wiring for easy installation
- Drivers have greater than 90% power factor and less than 20% THD
- 0-10V dimming driver standard, color CD option to have dimming leads extended
- Automatic thermal self-protection
- UL ETL listed
- 40 deg. C to deg. C ambient operation
- Leakproof TIGC polyester powder coat finish

Stainless steel bezel mechanically compresses gasketed light engine for IP65 rating

- Normal 3000K, 40 CRI; 4000K, 70 CRI; 5000K, 67 CRI, Turtle Friendly Amber
- Choice of 120 High brightness LED configurations with individual acrylic lenses aimed to produce IES type II, III, IV and V distribution
- Backlight control option reduces spill light behind pole 85%, doesn't change fixture appearance or EPA
- Design Light Consortium (DLC) qualified, consult DLC website for more details: <http://www.designlights.org/DLC>
- Listed to UL 1598 and CSA C22.2:250.0.24 for wet locations

CL1S	A	B	C	D	E	F	G	H	I	J	K	L	M	N	O	P	Q	R	S	T	U	V	W	X	Y	Z
Series	CL1S	CL1S	CL1S	CL1S	CL1S	CL1S	CL1S	CL1S	CL1S	CL1S	CL1S	CL1S	CL1S	CL1S	CL1S	CL1S	CL1S	CL1S	CL1S	CL1S	CL1S	CL1S	CL1S	CL1S	CL1S	
Series	CL1S	CL1S	CL1S	CL1S	CL1S	CL1S	CL1S	CL1S	CL1S	CL1S	CL1S	CL1S	CL1S	CL1S	CL1S	CL1S	CL1S	CL1S	CL1S	CL1S	CL1S	CL1S	CL1S	CL1S	CL1S	

ORDERING INFORMATION

CL1S - A - B - C - D - E - F - G - H - I - J - K - L - M - N - O - P - Q - R - S - T - U - V - W - X - Y - Z

Notes: 1. Pole option not available with universal voltage. 2. Specify for wiring on 120V. 3. Recommended for Type II and III distribution only. 4. 0-10V dimming driver with universal voltage and different dimming driver options, not order options of 0-10V dimming driver for square dimming driver (see comments). 5. Not available with 0-10V or 0-10V. 6. Not available with 0-10V, 0-10V or 0-10V.

Additional Accessories on Pg. 226-227

RUBIX - model: WS-W2504, WS-W2505 WAC LIGHTING Responsible Lighting®

Available in single and twin-light configurations, this die cast aluminum LED wall luminaire is wet location listed for a broad range of exterior lighting applications. Designed with a square profile, this version of Rubix mounts upwards or downwards.

PRODUCT DESCRIPTION

- Energy Star® rated
- CEC Title 24 Compliant
- Mounts up or down
- IP65 Rated, ETL & cETL Wet Location Listed
- Die-Cast Aluminum Construction
- Universal Voltage Input (120V - 277V)
- Dimming: ELV (120V) or 0-10V

SPECIFICATIONS

Construction: Aluminum with etched glass.

Power: Integral driver in luminaire, 120V - 277V input.

Light Source: High output LED

Mounting: Mounts directly to junction box

Dimming: 0-10V Dimming: 100%-10% ELV Dimming: 100%-15% (120V only)

Finish: Brushed Aluminum (AL), Black (BK), Bronze (BZ), Graphite (GH), White (WT)

Color Temp: 3000K

CRI: 90

Rated Life: 70,000 hours

Standards: Energy Star® rated, IP65 Rated, ETL & cETL Wet Location Listed, CEC Title 24 Compliant, Dark Sky Friendly.

Dimming: ELV (120V) or 0-10V

Example: WS-W2504-GH

waclighting.com Phone: (800) 526-2588 Fax: (800) 526-2585

Headquarters/Eastern Distribution Center 44 Harbor Park Drive Port Washington, NY 11050

Central Distribution Center 1750 Birchdale Avenue Lithia Springs, GA 30122

Western Distribution Center 1750 Birchdale Avenue Ontario, CA 91760

WAC Lighting retains the right to modify the design of our products at any time as part of the company's continuous improvement program. OCT 2016

RUBIX - model: FM-W2505, FM-W2510 WAC LIGHTING Responsible Lighting®

Energy Star rated and CEC Title 24 compliant, this versatile Rubix model is available for both wall and ceiling mounting. Die cast aluminum constructed with etched glass for durability in exterior environments, Rubix delivers a substantial luminaire output with a minimalist design.

PRODUCT DESCRIPTION

- Energy Star® rated
- CEC Title 24 Compliant
- Wall or Ceiling Mount
- IP65 Rated, ETL & cETL Wet Location Listed
- Die-Cast Aluminum Construction
- Universal Voltage Input (120V - 277V)
- Dimming: ELV (120V) or 0-10V

SPECIFICATIONS

Construction: Aluminum with etched glass.

Power: Integral driver in luminaire, 120V - 277V input.

Light Source: High output LED

Mounting: Mounts directly to junction box

Dimming: 0-10V Dimming: 100%-10%

ELV Dimming: 100%-15% (120V only)

Finish: Brushed Aluminum (AL), Black (BK), Bronze (BZ), Graphite (GH), White (WT)

Color Temp: 3000K

CRI: 90

Rated Life: 70,000 hours

Standards: Energy Star® rated, IP65 Rated, ETL & cETL Wet Location Listed, CEC Title 24 Compliant, Dark Sky Friendly.

Example: FM-W2510-WT

waclighting.com Phone: (800) 526-2588 Fax: (800) 526-2585

Headquarters/Eastern Distribution Center 44 Harbor Park Drive Port Washington, NY 11050

Central Distribution Center 1750 Birchdale Avenue Lithia Springs, GA 30122

Western Distribution Center 1750 Birchdale Avenue Ontario, CA 91760

WAC Lighting retains the right to modify the design of our products at any time as part of the company's continuous improvement program. OCT 2016

Model: WL-LED200 WAC LIGHTING Responsible Lighting®

Vertical rectangle LEDme® Step Light. Designed for safety and style on stairways, patios, decks, balcony areas, walkways and building perimeters.

PRODUCT DESCRIPTION

- 316 marine grade cast stainless steel (SS) available
- Direct wiring, no driver needed
- Low profile, flush to wall aesthetics with no visible hardware
- 60,000 hour rated life
- Balanced lighting, free of shadows with minimum glare
- Up to 200 fixtures can be connected in parallel
- Replaceable LED module
- 5-year WAC Lighting product warranty

SPECIFICATIONS

Construction: Die-cast aluminum or 316 marine grade cast stainless steel

Power: Direct wiring, no remote driver needed. Input voltage: 120V or 277V AC 50/60Hz

Light Source: 3000K CCT Samsung Hi-AC High Power LED, CRI: 85

Optional color lenses. Total power consumption of 3.0W

Mounting: Fits into 2" x 4" box with minimum inside dimensions of 3/4" x 2 7/8" x 2 1/4" includes bracket for 3-Box mount.

Dimming: Dies to 10% with electronic low voltage (ELV) dimmer. Approved dimmers: Lutron Nova-T NTELV-300 & NTELV-600, Lutron Nova-T NTELV-300P & NTELV-600P, Lutron Skylink SELV-300P Lutron Maestro MRELV-600

Standards: IP66, UL & cUL. Listed for wet locations.

FINISHES

SS Stainless Steel

BK Black

BZ Bronze

GH Graphite

WT White

Example: WL-LED200F-AM-BZ

waclighting.com Phone: (800) 526-2588 Fax: (800) 526-2585

Headquarters/Eastern Distribution Center 44 Harbor Park Drive Port Washington, NY 11050

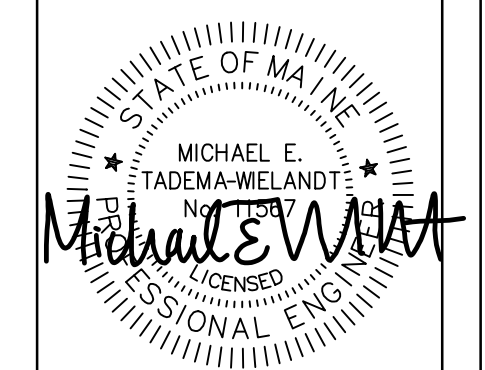
Central Distribution Center 1750 Birchdale Avenue Lithia Springs, GA 30122

Western Distribution Center 1750 Birchdale Avenue Ontario, CA 91760

WAC Lighting retains the right to modify the design of our products at any time as part of the company's continuous improvement program. MAR 2016

LIGHT FIXTURE TABLE						
LABEL	LIGHT FIXTURE	MANUFACTURER	MANUFACTURERS ID	NUMBER OF LIGHTS	MOUNTING HEIGHT	MOUNTING LOCATION
A	PEDESTRIAN SITE LIGHT	CIMARRON	CL1S-16L-3K-2	2	15'	POLE
B	RUBIX LED WALL MOUNT	WAC LIGHTING	WS-W2504	4	8'	WALL
C	RUBIX LED CEILING MOUNT	WAC LIGHTING	FM-W2505	1	9'	CANOPY CEILING
D	LEDme STEP LIGHT	WAC LIGHTING	WL-LED200F-C-WT	7	1.5'	WALL AT SIDEWALK

NOTES:
 1. LIGHTING PLAN PREPARED USING DESIGN MASTER PHOTOMETRICS SOFTWARE
 2. ONLY PROPOSED LIGHTING FIXTURES ARE MODELED
 3. DEPRECIATION FACTOR FOR LED IS 0.90



P.E. MICHAEL E. TADEAMA-WIELANDT
 DATE: 4/25/17

NO.	DATE	REVISIONS
1	4-25-2017	SUBMITTED TO CITY OF PORTLAND FOR REVIEW

565 CONGRESS STREET
 SUITE 310
 PORTLAND, ME 04102

P.O. BOX 339
 111 ELDERBERRY LANE
 NEW GLOUCESTER, ME 04260

OFFICE: (207) 928-5111 FAX: (207) 221-1317
 www.terradync.com

TERRADYN CONSULTANTS, LLC
 Civil Engineering - Land Planning - Stormwater Design - Environmental Permitting

SHEET DESCRIPTION
ONEJOY PLACE
 1 JOY PLACE, PORTLAND, MAINE 04102

PHOTOMETRIC LIGHTING PLAN

PREPARED FOR
ONEJOY PLACE, LLC
 C/O RENEWAL HOUSING ASSOCIATES, LLC
 2 UNION STREET, 5TH FLOOR
 PORTLAND, MAINE 04101

DATE: 3/7/2017
 SCALE: 1" = 10'
 DESIGNED: MTW
 JOB NO: 1704
 FILE NO: 1704-PHOTOMETRICS

SHEET **P-1.0**