

APPROVED BY THE  
CITY OF PORTLAND PLANNING BOARD

\_\_\_\_\_

\_\_\_\_\_

\_\_\_\_\_

\_\_\_\_\_

\_\_\_\_\_

DATE \_\_\_\_\_

**PLAN REFERENCES**

- "STANDARD BOUNDARY SURVEY ON BRACKETT STREET, PORTLAND, MAINE MADE FOR PORTLAND WEST, INC." DATED DECEMBER 14, 2000 BY OWEN HASKELL, INC.
- CITY OF PORTLAND STREET SHEETS.
- "PLAN OF PROPERTY IN PORTLAND, MAINE MADE FOR CITY OF PORTLAND SCHOOL DEPARTMENT" DATED FEB. 6, 1975 BY H.I. & E.C. JORDAN SURVEYORS.
- "CONDOMINIUM PLAT, BLUE SKYES CONDOMINIUM, 75 GRAY STREET & 103 BRACKETT STREET, PORTLAND, MAINE MADE FOR RECORD OWNER FRANCIS R. CLOUTIER" FEBRUARY 27, 2017 BY OWEN HASKELL, INC.
- "REICHE SCHOOL - BRACKETT STREET CROSSWALKS EXISTING CONDITIONS PLAN, PINE STREET TO SPRING STREET," BY CITY OF PORTLAND, MAINE, PUBLIC WORKS DEPARTMENT, ENGINEERING DIVISION DATED FEB. 18, 2016. PLAN NUMBER 882/49.

**NOTES**

- OWNER OF RECORD: ONEJOY PLACE LLC, C.C.R.D. 33404 PAGE 272.
  - PARCEL IS SHOWN AS LOT 48 & 49 BLOCK E ON CITY OF PORTLAND'S ASSESSORS MAP 45.
  - BASIS OF BEARINGS ARE MAGNETIC 1967 PER PLAN REFERENCE 1.
  - ELEVATIONS ARE BASED ON CITY PORTLAND VERTICAL DATUM.
  - COORDINATES ARE STATE PLANE COORDINATE SYSTEM, MAINE WEST ZONE, NAD 1983 BASED ON MONUMENT LOCATIONS PROVIDED BY THE CITY OF PORTLAND DEPARTMENT OF PUBLIC WORKS ENGINEERING DIVISION.
- CITY CONTROL POINTS USED:  
 T104-24-1204 N: 297735.40 E: 2926587.54  
 T124-26-1269 N: 297422.56 E: 2926942.98
- SEWER LATERALS TAKEN FROM PLAN REFERENCE 5.

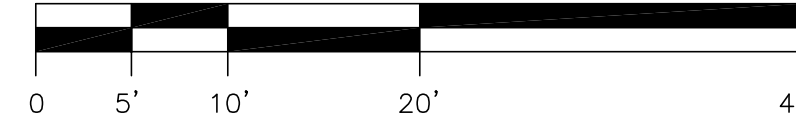
**UTILITY NOTE**

THE UNDERGROUND UTILITIES SHOWN HAVE BEEN LOCATED FROM FIELD SURVEY INFORMATION AND EXISTING DRAWINGS. THE SURVEYOR MAKES NO GUARANTEES THAT THE UNDERGROUND UTILITIES SHOWN COMPRISE ALL SUCH UTILITIES IN THE AREA, EITHER IN SERVICE OR ABANDONED. THE SURVEYOR FURTHER DOES NOT WARRANT THAT THE UNDERGROUND UTILITIES SHOWN ARE IN THE EXACT LOCATION INDICATED ALTHOUGH HE DOES CERTIFY THAT THEY ARE LOCATED AS ACCURATELY AS POSSIBLE FROM THE INFORMATION AVAILABLE. THE SURVEYOR HAS NOT PHYSICALLY LOCATED THE UNDERGROUND UTILITIES. CALL 1-800-DIGSAFE AT LEAST THREE BUSINESS DAYS BEFORE PERFORMING ANY CONSTRUCTION. DUE TO OSHA CONFINED SPACE REQUIREMENTS, ALL INVERTS AND PIPE SIZES MUST BE VERIFIED PRIOR TO ANY CONSTRUCTION.

**LEGEND**

- IRON PIPE OR ROD FOUND
- UTILITY POLE
- WATER VALVE
- MANHOLE
- HYDRANT
- DECIDUOUS TREE
- FENCE
- CURB
- OHW OVERHEAD WIRES
- W WATER LINE
- G GAS LINE

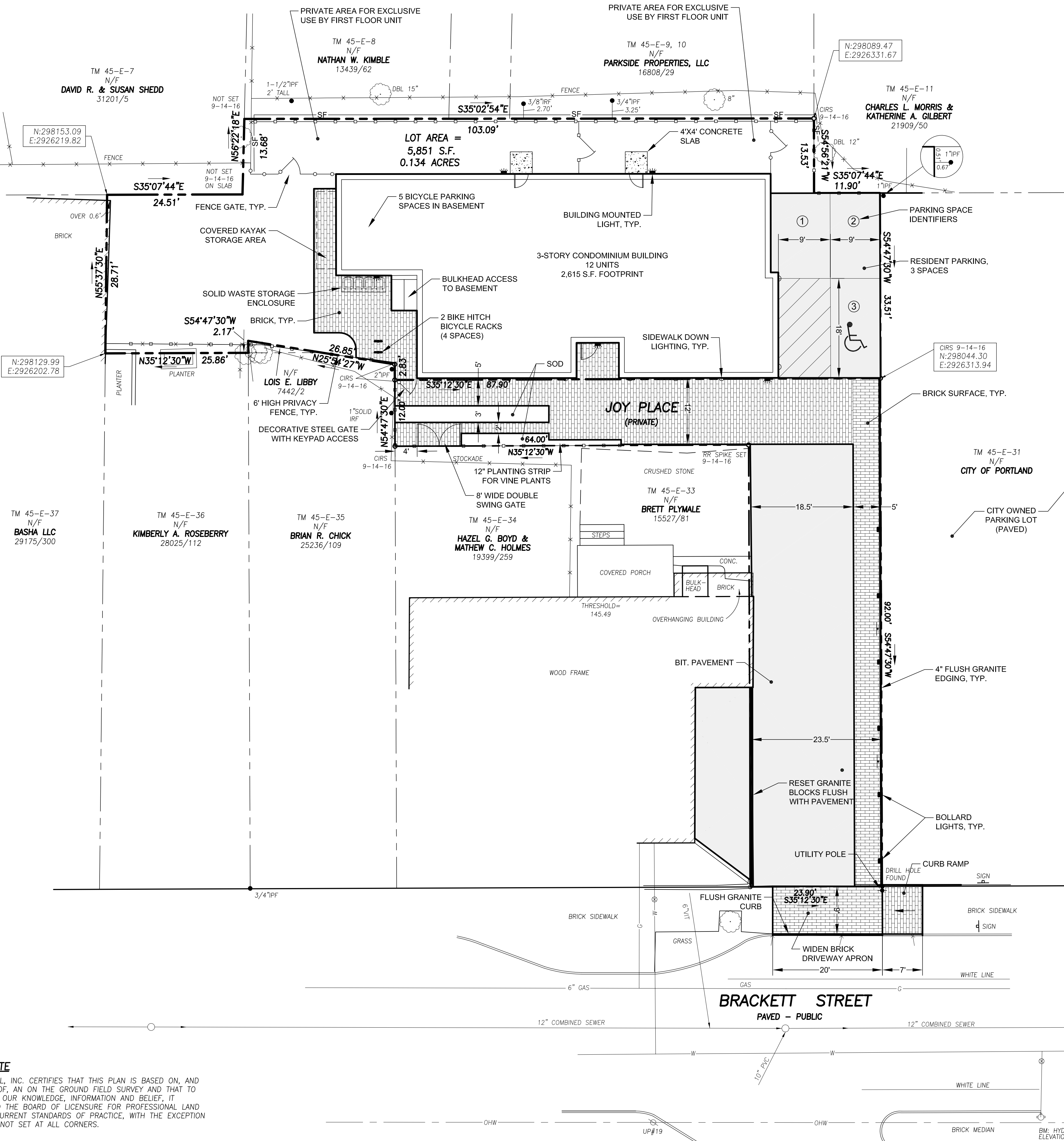
**GRAPHIC SCALE**



**CERTIFICATE**

OWEN HASKELL, INC. CERTIFIES THAT THIS PLAN IS BASED ON, AND THE RESULT OF, AN ON THE GROUND FIELD SURVEY AND THAT TO THE BEST OF OUR KNOWLEDGE, INFORMATION AND BELIEF, IT CONFORMS TO THE BOARD OF LICENSURE FOR PROFESSIONAL LAND SURVEYORS CURRENT STANDARDS OF PRACTICE, WITH THE EXCEPTION OF MARKERS NOT SET AT ALL CORNERS.

DATE \_\_\_\_\_ JOHN W. SWAN, PLS NO. 1038



SPRING ST.

REV. 1 09-13-17 REVISED PER STAFF COMMENTS

**RECORDING PLAT**  
AT  
1 JOY PLACE, PORTLAND, MAINE  
MADE FOR OWNER OF RECORD:  
**ONEJOY PLACE LLC**  
TWO UNION STREET, 5TH FLOOR  
PORTLAND, MAINE 04101

**OWEN HASKELL, INC.**  
390 U.S. ROUTE ONE, FALMOUTH, ME 04105 (207) 774-0424  
PROFESSIONAL LAND SURVEYORS

Drwn By	RS	Date	Job No.
Trace By	JLW	APRIL 20, 2017	2014-086P
Check By	JWS	Scale	Drwg. No.
Book No.	FILE	1" = 10'	C-2.1