

**APPLICANT/OWNER:**  
 ONEJOY PLACE, LLC  
 C/O RENEWAL HOUSING ASSOCIATES, LLC  
 2 UNION STREET, 5TH FLOOR  
 PORTLAND, MAINE 04101

**PROJECT PARCEL SITE**  
 CITY OF PORTLAND TAX ASSESSOR'S MAP, BLOCK, & LOT NUMBERS  
 MAP 45 BLOCK E LOTS 48 & 49

# SITE DEVELOPMENT PLANS FOR **ONEJOY PLACE CONDOMINIUM** 1 JOY PLACE - PORTLAND, MAINE APRIL 2017 PERMIT DOCUMENTS

**SHEET INDEX**

C-1.0	COVER SHEET
C-1.1	GENERAL NOTES & LEGEND
C-2.0	BOUNDARY & TOPOGRAPHIC SURVEY
C-2.1	RECORDING PLAT
C-2.2	EXISTING CONDITIONS & DEMOLITION PLAN
C-2.3	CONSTRUCTION MANAGEMENT PLAN
C-3.0	SITE LAYOUT PLAN
C-4.0	GRADING, DRAINAGE & EROSION CONTROL PLAN
C-5.0	UTILITY PLAN
C-6.0	SITE DETAILS
C-6.1	UTILITY & DRAINAGE DETAILS
L-1	LANDSCAPE PLAN
P-1	LIGHTING PHOTOMETRIC PLAN



**LOCATION MAP**  
 SCALE: 1"=500'

PERMITS	TYPE OF PERMIT	GOVERNING BODY	STATUS
	SITE PLAN/SUBDIVISION APPROVAL	CITY OF PORTLAND PLANNING AUTHORITY CITY HALL, 389 CONGRESS STREET PORTLAND, ME 04101 TEL. 207.874.8722	SUBMITTED 4/25/2017
	BUILDING PERMIT	CIT OF PORTLAND CODE ENFORCEMENT OFFICE CITY HALL, 389 CONGRESS STREET PORTLAND, ME 04101 TEL. 207.874.8900	TO BE SUBMITTED BY BUILDING CONTRACTOR
	UTILITY / STREET OPENING	CITY OF PORTLAND PUBLIC SERVICES DIVISION 55 PORTLAND STREET PORTLAND, ME 04101 TEL. 207.874.8801	TO BE FILED BY PERMIT SITE CONTRACTOR

**UTILITIES**

**SEWER**  
 CITY OF PORTLAND  
 PUBLIC SERVICES DIVISION  
 55 PORTLAND STREET  
 PORTLAND, MAINE 04102  
 207.874.8850

**WATER**  
 PORTLAND WATER DISTRICT  
 22 DOUGLASS STREET  
 P.O. BOX 3553  
 PORTLAND, MAINE 04104  
 207.774.5961

**ELECTRIC**  
 CENTRAL MAINE POWER COMPANY  
 162 CANCO ROAD  
 PORTLAND, ME 04103  
 (207) 842-2367

**TELEPHONE**  
 FAIRPOINT COMMUNICATIONS  
 5 DAVIS FARM ROAD  
 P.O. BOX 11560  
 PORTLAND, MAINE 04103  
 888.984.1515

**NATURAL GAS**  
 UNITIL  
 376 RIVERSIDE INDUSTRIAL PARKWAY  
 PORTLAND, MAINE 04103  
 866.933.3821

**DIG SAFE SYSTEM, INC.**  
 TEL. 1-888-DIG-SAFE (344-7233)  
 WWW.DIGSAFE.COM

**PREPARED BY:**

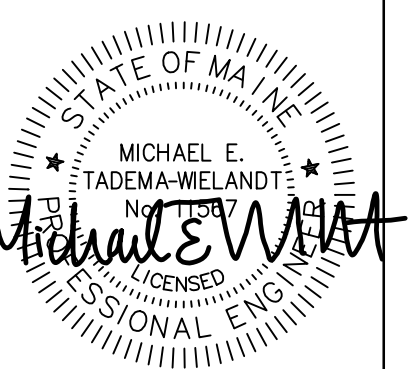
**CIVIL ENGINEER:**  
 TERRADYN CONSULTANTS, LLC  
 565 CONGRESS STREET, SUITE 310  
 PORTLAND, MAINE 04101  
 207.926.5111  
 CONTACT: MICHAEL TADEMA-WIELANDT

**ARCHITECT:**  
 ARCHETYPE ARCHITECTS  
 48 UNION WARF  
 PORTLAND, ME 04101  
 207.772.6022  
 CONTACT: DAVID LLOYD

**SURVEYOR:**  
 OWEN HASKELL, INC.  
 309 U.S. ROUTE ONE, UNIT 10  
 FALMOUTH, MAINE 04105  
 207.774.0424  
 JOHN SWAN

**ELECTRICAL/MECHANICAL ENGINEER:**  
 BENNETT ENGINEERING  
 P.O. BOX 297  
 FREEPORT, MAINE 04032  
 207.865.9475  
 CONTACT: WILLIAM BENNETT

**GEOTECHNICAL ENGINEER:**  
 SUMMIT GEOENGINEERING SERVICES  
 145 LISBON STREET, SUITE 601  
 LEWISTON, MAINE 04240  
 207.576.3313  
 CONTACT: WILLIAM PETERLEIN



P.E.: MICHAEL E. TADEMA-WIELANDT  
 DATE: 4/25/17

NO.	DATE	REVISIONS
1	4-25-2017	SUBMITTED TO CITY OF PORTLAND FOR REVIEW

565 CONGRESS STREET  
 SUITE 310  
 PORTLAND, ME 04102

P.O. BOX 3553  
 LEWISBERRY LANE  
 NEW GLoucester, ME 04260

OFFICE: (207) 926-5111 FAX: (207) 221-1317  
 www.terradynconsultants.com

TERRADYN CONSULTANTS, LLC  
 Civil Engineering - Land Planning - Stormwater Design - Environmental Permitting

SHEET DESCRIPTION	ONEJOY PLACE 1 JOY PLACE, PORTLAND, MAINE 04102 COVER SHEET
PREPARED FOR	ONEJOY PLACE, LLC C/O RENEWAL HOUSING ASSOCIATES, LLC 2 UNION STREET, 5TH FLOOR PORTLAND, MAINE 04101
DATE:	3/7/2017
SCALE:	AS NOTED
DESIGNED:	MTW
JOB NO:	1704
FILE:	1562-COVER.DWG
SHEET	C-1.0

**PRELIMINARY - NOT FOR CONSTRUCTION**