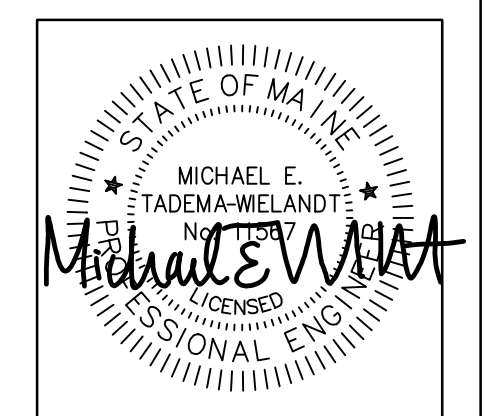
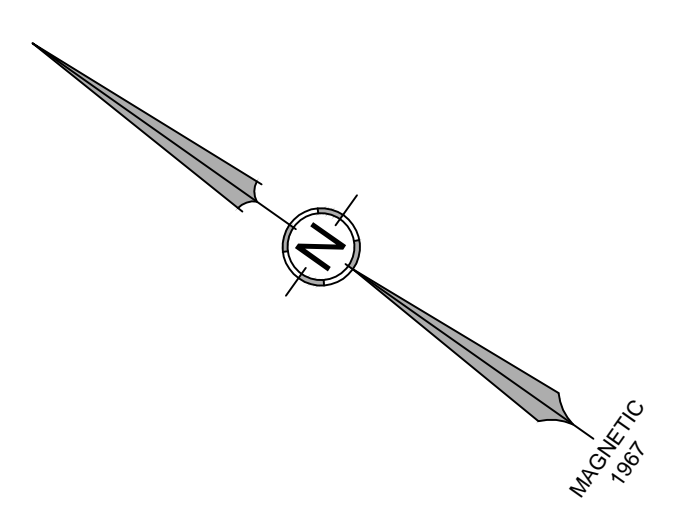
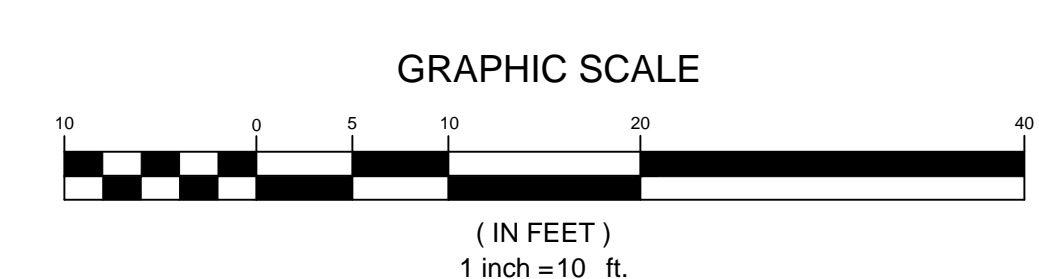
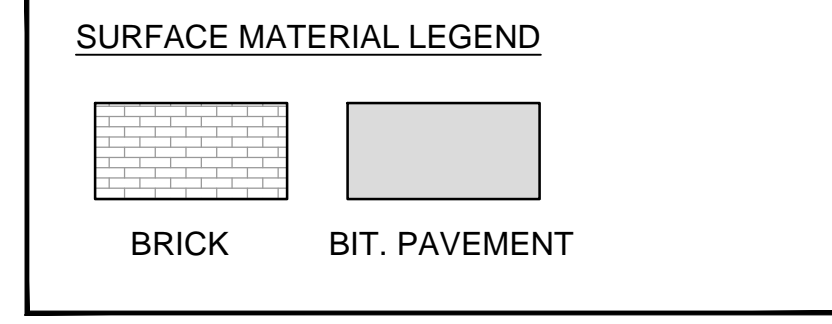


NOTES:

- SEE LANDSCAPE PLAN (SHEET L.1) FOR FENCE INFORMATION
- NO PARKING WITHIN JOY PLACE RIGHT OF WAY. BY DEED, PRIVATE DRIVEWAY TO REMAIN OPEN AND UNOBSTRUCTED FOREVER. FOR USE BY DEED HOLDERS OF 167 BRACKETT STREET, 165 BRACKETT STREET, ONEJOY CONDOMINIUM ASSOCIATION, AND 157 BRACKETT STREET (CITY OF PORTLAND).
- ALL SIGNS SHALL CONFORM TO THE LATEST EDITION OF THE MANUAL ON UNIFORM TRAFFIC CONTROL DEVICES (MUTCD).



P.E. MICHAEL E. TADEAMA-WIELANDT
DATE: 9-13-2017

NO.	DATE	REVISIONS	BY
1	4-25-2017	MTW	APPD
2	8-7-2017	MTW	APPD
3	8-29-2017	MTW	APPD
4	9-13-2017	REMOVED SIDEWALK ON ADJUTING CITY PARCEL	MTW
		REVISED PER STAFF & PEER REVIEW COMMENTS	MTW
		REVISOR COMMENTS	MTW

965 CONGRESS STREET
 SUITE 310
 PORTLAND, ME 04102
 P.O. BOX 339
 111 ELDERBERRY LANE
 NEW GLOUCESTER, ME 04260
TERRADYN
 CONSULTANTS, LLC
 Civil Engineering - Land Planning - Stormwater Design - Environmental Permitting

OFFICE: (207) 926-5111 FAX: (207) 221-1317
 www.terradynconsultants.com

SHEET DESCRIPTION
ONEJOY PLACE
1 JOY PLACE, PORTLAND, MAINE 04102
SITE LAYOUT PLAN

PREPARED FOR
ONEJOY PLACE, LLC
C/O RENEWAL HOUSING ASSOCIATES, LLC
2 UNION STREET, 5TH FLOOR
PORTLAND, MAINE 04101

DATE: 3/7/2017
SCALE: 1" = 10'
DESIGNED: MTW
JOB NO.: 1704
FILE: 1704-BASE.DWG
SHEET **C-3.0**

PRELIMINARY - NOT FOR CONSTRUCTION