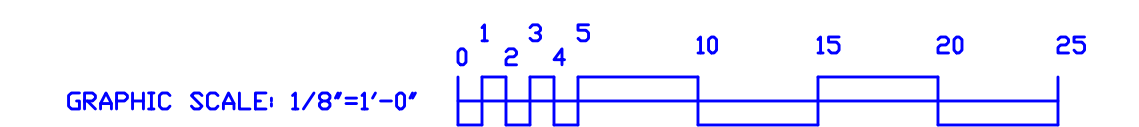


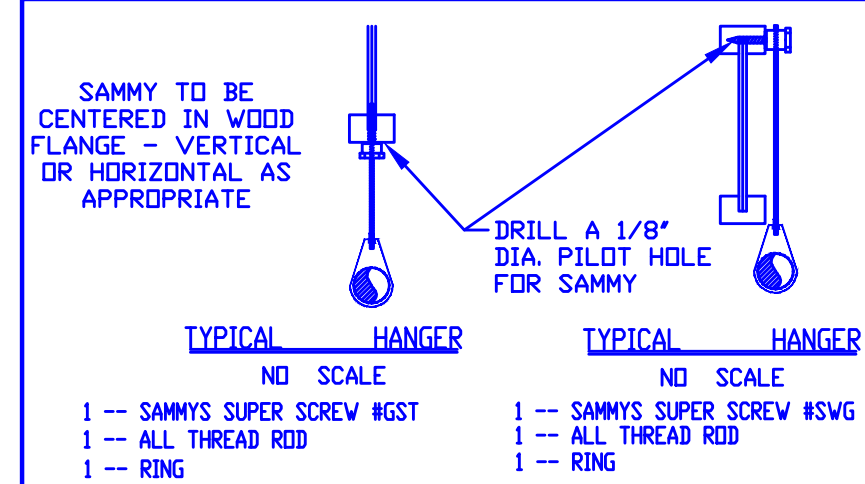
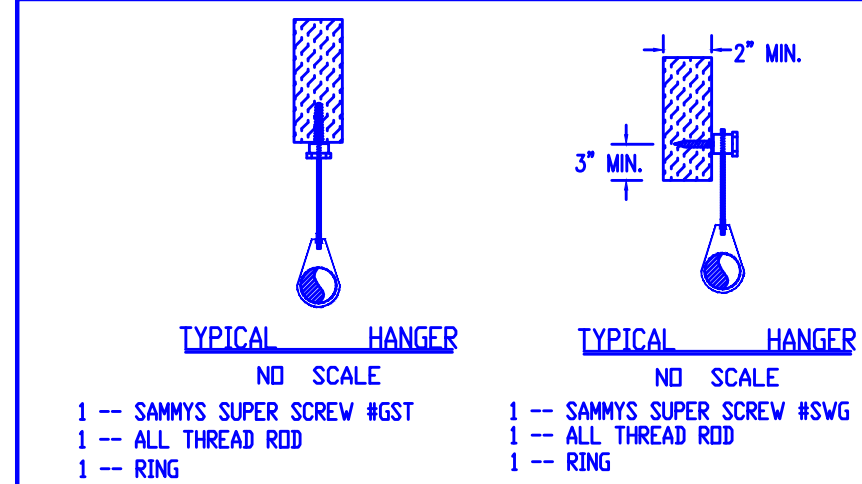
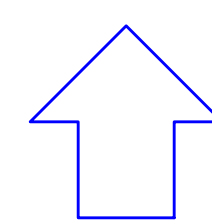
SECOND LEVEL PLAN
 FINISHED FLOOR ELEV = 155'-0"
 SCALE: 1/8"=1'-0"

GENERAL NOTES:

1. THE BUILDING OWNER SHALL BE RESPONSIBLE FOR PROVIDING ADEQUATE HEAT FOR ALL AREAS IN THE BUILDING PROTECTED BY WET SPRINKLER SYSTEMS AND FOR ALL WATER FILLED SUPPLY PIPES.
2. ALL NEW PIPING SHALL BE HYDROSTATICALLY TESTED AT NOT LESS THAN 200 PSI FOR 2 HOURS OR AT 50 PSI IN EXCESS OF THE MAXIMUM PRESSURE, WHEN THE MAXIMUM PRESSURE TO BE MAINTAINED IS IN EXCESS OF 150 PSI. (PER N.F.P.A. 13)
3. WHETHER OR NOT INDICATED ON DRAWINGS, THE FOLLOWING ITEMS SHALL BE PROVIDED:
 - SPARE HEAD CABINET WITH WRENCH (N.F.P.A. 13)
 - PROVISIONS FOR FLUSHING AND DRAINING ALL PIPING.
 - INSPECTOR'S TEST CONNECTION FOR EACH SYSTEM.
4. ALL PIPING 1" SHALL BE SCHEDULE 40 BLACK STEEL WITH MALLEABLE IRON FITTINGS.
5. ALL PIPING 1 1/4" AND LARGER SHALL BE SCHEDULE 10 BLACK STEEL WITH GROOVED COUPLINGS AND "VICTALOCK" FIRELOCK FITTINGS OR EQUAL.
6. SCHEDULE 40 CPVC PIPING AND FITTINGS WITH SOLVENT WELD JOINTS SHALL BE USED WITHIN THE RESIDENTIAL OCCUPANCIES.
7. ALL SPRINKLER HEADS IN S.A.T. CEILINGS SHALL BE LOCATED IN AN AESTHETIC, SYMMETRICAL PATTERN WHENEVER POSSIBLE.
8. CENTERLINE OF PIPE ABOVE FINISH FLOOR IS INDICATED AS (0'-0") OR BELOW DECK AS (0')
9. HYDRAULIC DATA REFERENCE POINTS ARE INDICATED AS (H) OR (L)
10. ALL HANGER SHALL BE SIZED AND LOCATED IN ACCORDANCE WITH N.F.P.A. 13 AND 13R.
11. ALL PIPING SHALL BE PITCHED IN ACCORDANCE WITH N.F.P.A. 13 AND 13R REQUIREMENTS.
12. ALL MECHANICAL TRADES MUST COORDINATE THEIR WORK WITH THE SPRINKLER WORK SHOWN ON THESE PLANS.
13. PROTECTIVE CAPS ARE TO REMAIN ON THE SPRINKLER HEADS UNTIL AFTER CEILINGS ARE INSTALLED.
14. THE SCOPE OF WORK UNDER THIS CONTRACT IS TO PROVIDE AUTOMATIC SPRINKLER PROTECTION THROUGHOUT THE ENTIRE NEW BUILDING IN ACCORDANCE WITH NFPA 13R REQUIREMENTS WITH ALL NON-RESIDENTIAL AREAS PROTECTED IN ACCORDANCE WITH NFPA 13 AND IS LIMITED TO THE WORK SHOWN ON THESE DOCUMENTS.



NORTH



HANGERS

AS SHOWN

ABBREVIATIONS

B	Bottom of Beam
D	Bottom of Deck
P	Bottom of Pipe
HV	Hose Valve
N.A.C	Nipple and Cap
NC	Not in Contract
NTS	Not to Scale
OS	Open Star Valve
PRV	Pressure Red Valve
RF	Roof Manifold
SP	Standpipe
TBB	Top of Beam
TOP	Top of Pipe
TOS	Top of Steel
UDN	Unless Otherwise Noted
CL	Centerline
NAS	No Automatic Sprinklers
OTA	Open to Above

CONTRACT RESPONSIBILITIES

ITEM	FFC	OTHERS
STREET CONN		
LEG MAN		
EXCAVATION		
FLUSHING		
WIRING		
PAINTING		
TAMPERS SWITCHES		
FLOW SWITCHES		
STREET CONN		

SPRINKLER HEAD LEGEND

SYMBOL	MAKE	MODEL	SIN	FINISH	TYPE	TEMP	NPT	DRIFICE	K-FACTOR	TOTAL	
(Symbol)	RELIABLE	FIRE549	R256	WHITE	REGULATED PENDENT	165 F	1/2"	7/16"	4.9	110	
										TOTAL	110

SUBMITTALS

SENT TO	DATE SENT MM/DD/YY	DATE RECEIVED
I S D		
T M		
L W		
I R I		
L A		
STATE FIRE		
LOCAL FIRE		
LOCAL WATER		
G. C.		

LICENSE# 093 442
 R.H.S.#
 PERMIT # XXXX

P.O. BOX 1395
 LEWISTON MAINE
 04243-1285

WEST END PLACE
 44 PINE STREET
 PORTLAND, MAINE

SECOND LEVEL - FLOOR PLAN

CONTRACT WITH ALLIED-COOK CONSTRUCTION

SYSTEM TYPE	NO.	DATE	REVISIONS DESCRIPTION
WET			
DRY			
DELUGE			
REACTION			
ML LIFE			
G. C.			

DATE: 29 MAY 2014
 TOTAL SPRKS ON JOB: 110
 SHEET# FP-2 2 OF 4
 JOB# 13-058