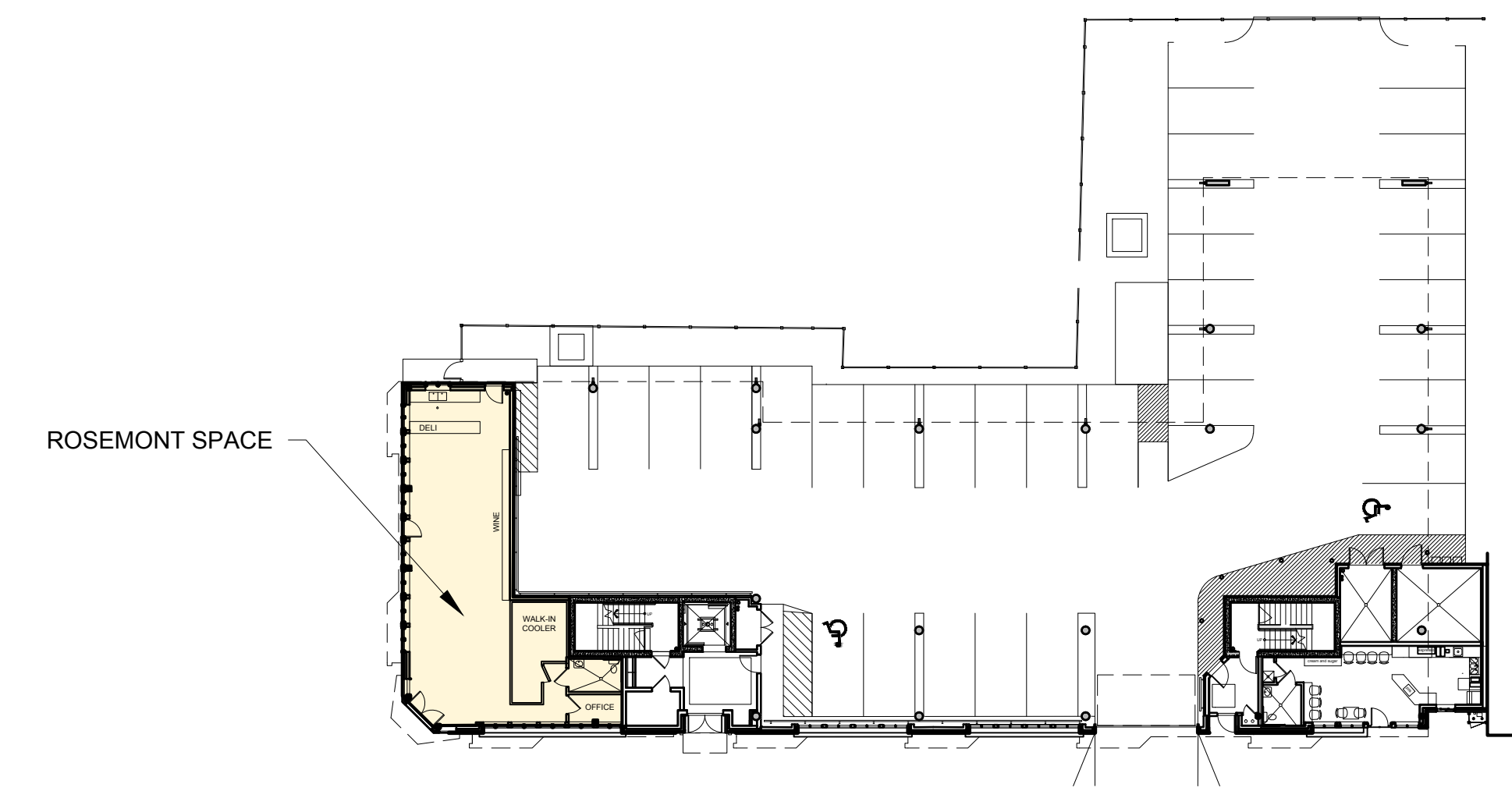


**ROSEMONT PLAN**  
SCALE 1/4" = 1'-0"

- NOTES:
- 1.) CABINETS AND COUNTERS BY OWNER
  - 2.) G.C TO PROVIDE FINISHED ELECTRICAL SYSTEM PER CODE AND COORDIANTE WITH OWNERS EQUIPMENT
  - 3.) G.C. TO PROVIDE ROUGH PLUMBING TO LOCATIONS OF SINK AND WALK-IN COOLER
  - 4.) G.C. TO PROVIDE FINISHED BATHROOM SIMILAR TO ORIGINAL PLAN (BUT IN NEW LOCATION)
  - 5.) G.C TO COORDINATE WITH TENANT FOR MECHANICAL / ELECTRICAL REQUIREMENTS



**FIRST FLOOR KEY PLAN**  
NOT TO SCALE