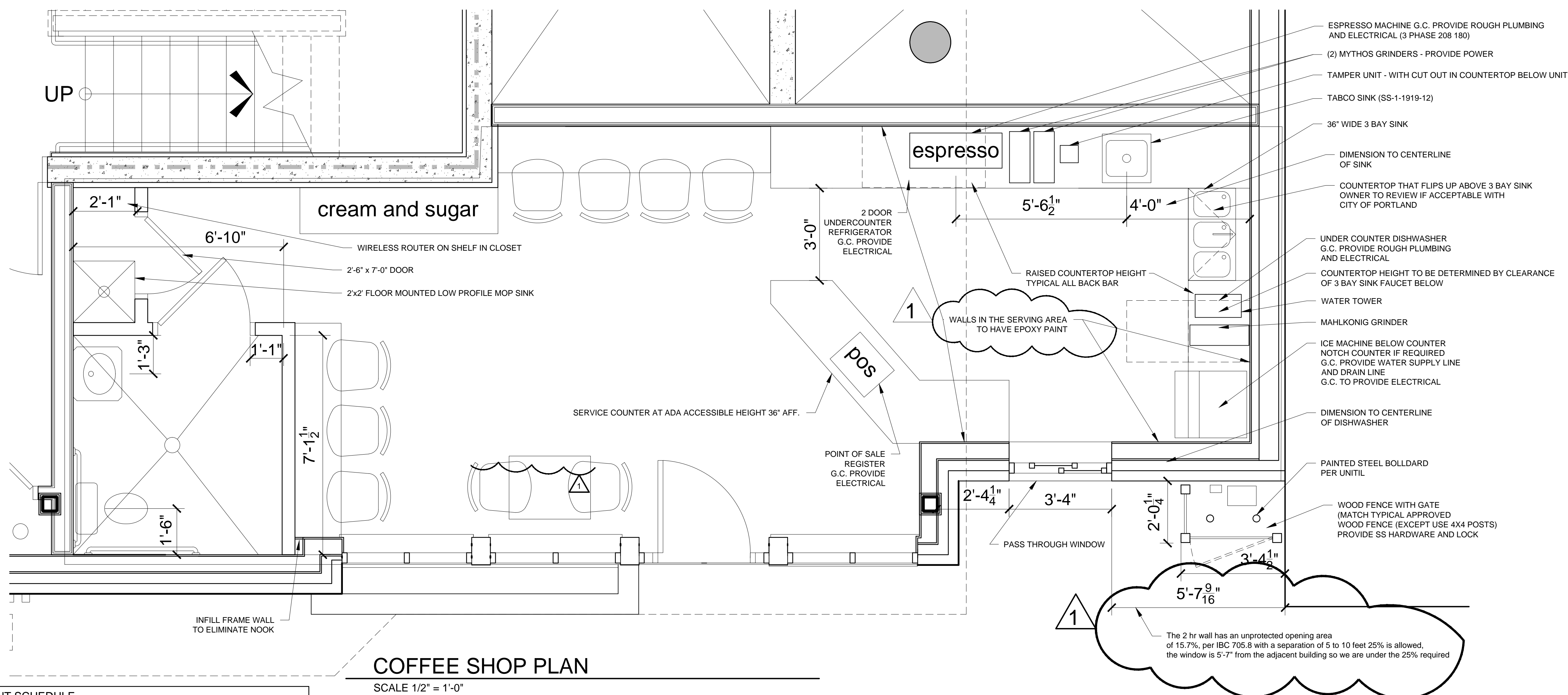
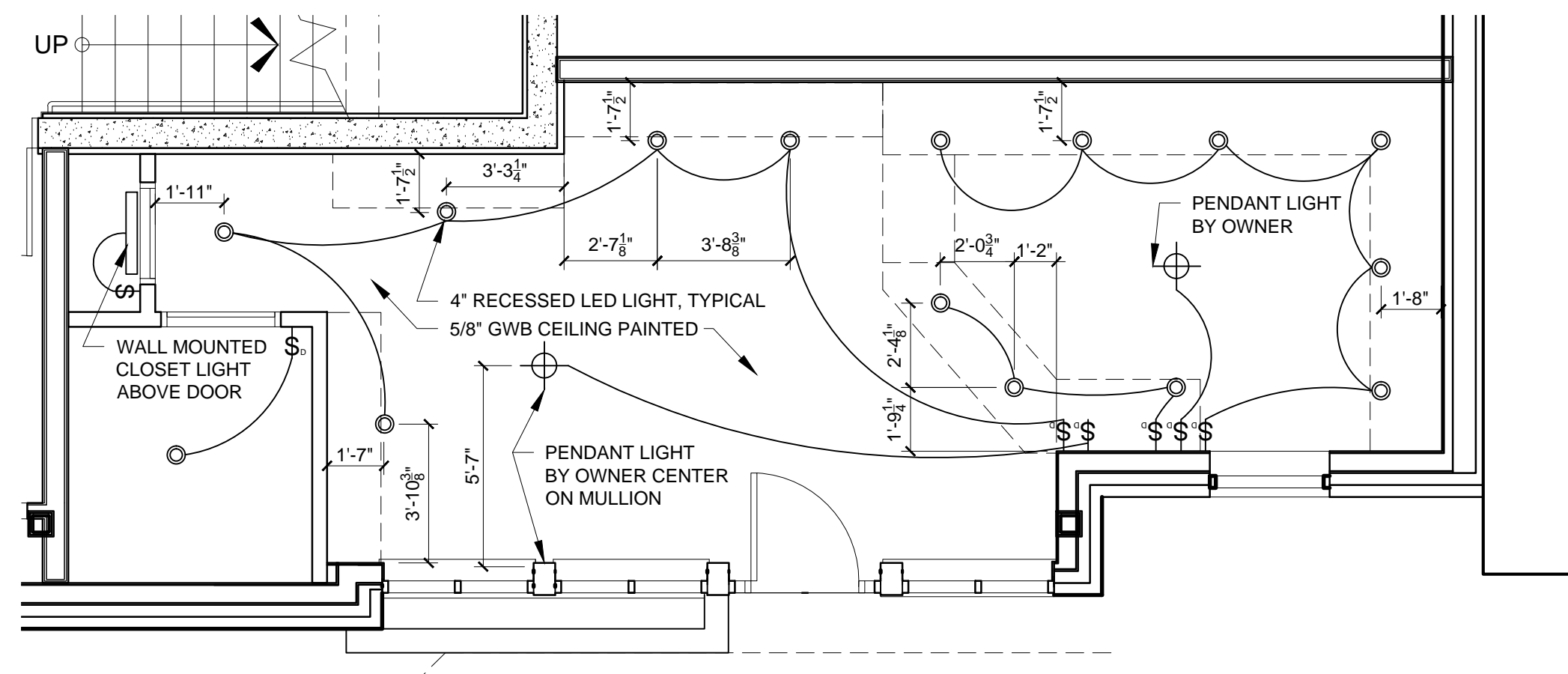


NOTES:

- 1.) CABINETRY AND COUNTERS BY OWNER
- 2.) G.C. TO PROVIDE FINISHED ELECTRICAL SYSTEM PER CODE AND COORDIANTE WITH OWNERS EQUIPMENT
- 3.) G.C. TO PROVIDE ROUGH PLUMBING TO LOCATIONS OF SINK, DISHWASHER, ESPRESSO MACHINE
- 4.) G.C. TO PROVIDE FINISHED BATHROOM SIMILAR TO ORIGINAL PLAN (BUT IN NEW LOCATION)
- 5.) G.C. TO PROVIDE HUNG 5/8" GWB CEILING WITH PAINTED FINISH, PROVIDE ACCESS PANELS AS REQUIRED
- 6.) PROVIDE DIMMERS AND DIMMABLE FIXTURES FOR ALL LIGHTING



EQUIPMENT SCHEDULE			
TYPE	MANUFACTURER	MODEL	ELECTRICAL INFO
ESPRESSO MACHINE	BLACK EAGLE	2 HEAD UNIT	208-240V, 7100 WATTS, 32 AMP DRAW, NEMA 6-50
UNDERCOUNTER REFRIGERATOR	TRUE	TUC-48	1/5 HP, 115V/60/1, 5.0 AMPS, NEMA 5-15P
DISHWASHER	CMA	UC65e	208-240v/60/1-PH, STANDARD
ICE MACHINE	MANITOWOC	UR 140A	G.C. TO CONFIRM
WATER TOWER	MARCO		2.8kW-230V-50Hz
GRINDER	MYTHOS		110 volts, 800 watts, amp draw 8, nema 5-15 RECEPTACLE
3 BAY SINK	KROWNE	#18-33	
GRINDER	MAHLKONIG	GSS1	110-115 V, 60 HZ SINGLE PHASE

© 2014 RYAN SENATORE ARCHITECTURE

WEST END PLACE  
44 PINE STREET  
PORTLAND, MAINE

**RSA**  
RYAN SENATORE ARCHITECTURE  
67 GRAY ROAD  
GORHAM, MAINE 04038  
207-650-6414  
senatorearchitecture.com

CONSULTANTS:

REVISIONS:  
REVISION #1 - 02/27/15

DATE: NOVEMBER 12, 2014

PROJECT No.

DRAWN BY: RJS

CHECKED BY: RJS

SCALE: AS NOTED

SHEET TITLE:

ASK  
13