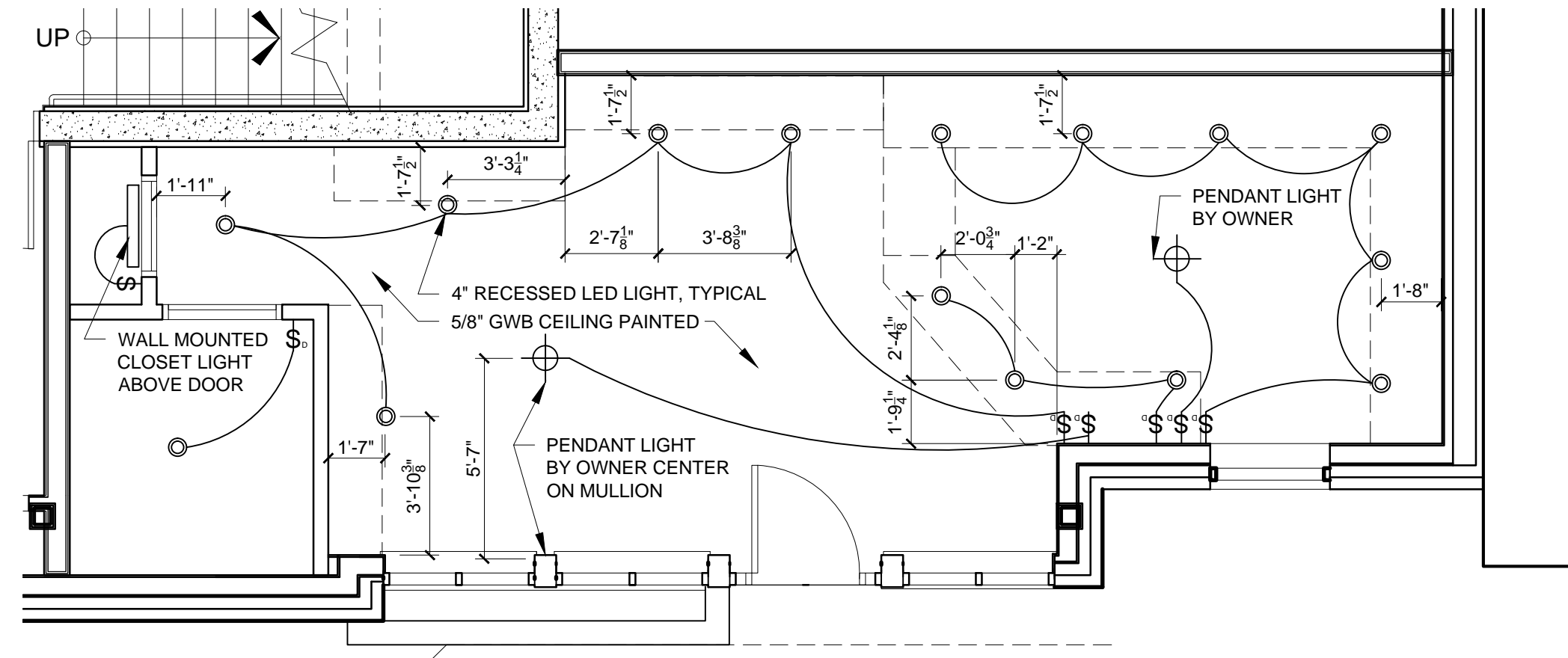


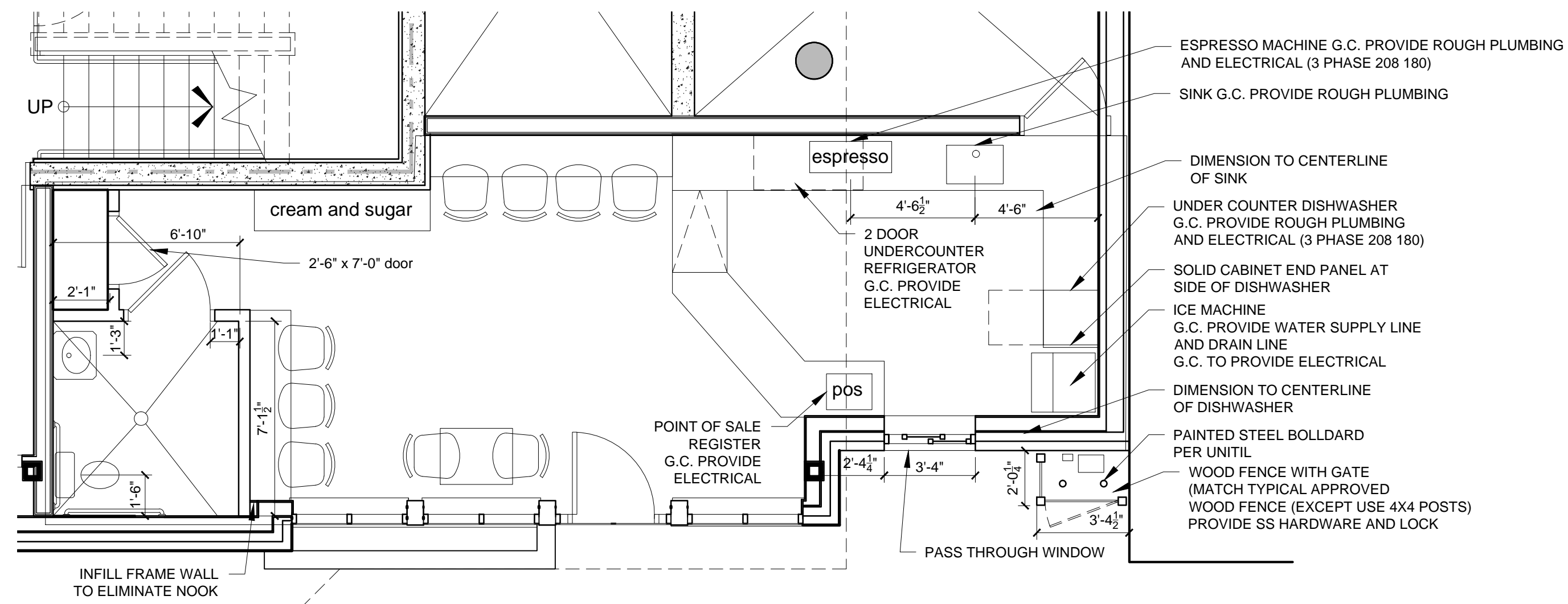
NOTES:

- 1.) CABINETS AND COUNTERS BY OWNER
- 2.) G.C. TO PROVIDE FINISHED ELECTRICAL SYSTEM PER CODE AND COORDIANTE WITH OWNERS EQUIPMENT
- 3.) G.C. TO PROVIDE ROUGH PLUMBING TO LOCATIONS OF SINK, DISHWASHER, ESPRESSO MACHINE
- 4.) G.C. TO PROVIDE FINISHED BATHROOM SIMILAR TO ORIGINAL PLAN (BUT IN NEW LOCATION)
- 5.) G.C. TO PROVIDE HUNG 5/8" GWB CEILING WITH PAINTED FINISH, PROVIDE ACCESS PANELS AS REQUIRED
- 6.) PROVIDE DIMMERS AND DIMMABLE FIXTURES FOR ALL LIGHTING



REFLECTED CEILING PLAN

SCALE 1/4" = 1'-0"



COFFEE SHOP PLAN

SCALE 1/4" = 1'-0"

EQUIPMENT SCHEDULE

TYPE	MANUFACTURER	MODEL	ELECTRICAL INFO
ESPRESSO MACHINE	BLACK EAGLE	2 HEAD UNIT	208-240V, 7100 WATTS, 32 AMP DRAW, NEMA 6-50
UNDERCOUNTER REFRIGERATOR	TRUE	TUC-48	1/5 HP, 115V/60/1, 5.0 AMPS, NEMA 5-15P
DISHWASHER	CMA	UC65e	208-240w/60/1-PH, STANDARD
ICE MACHINE	MANITOWOC	UR 140A	G.C. TO CONFRIM