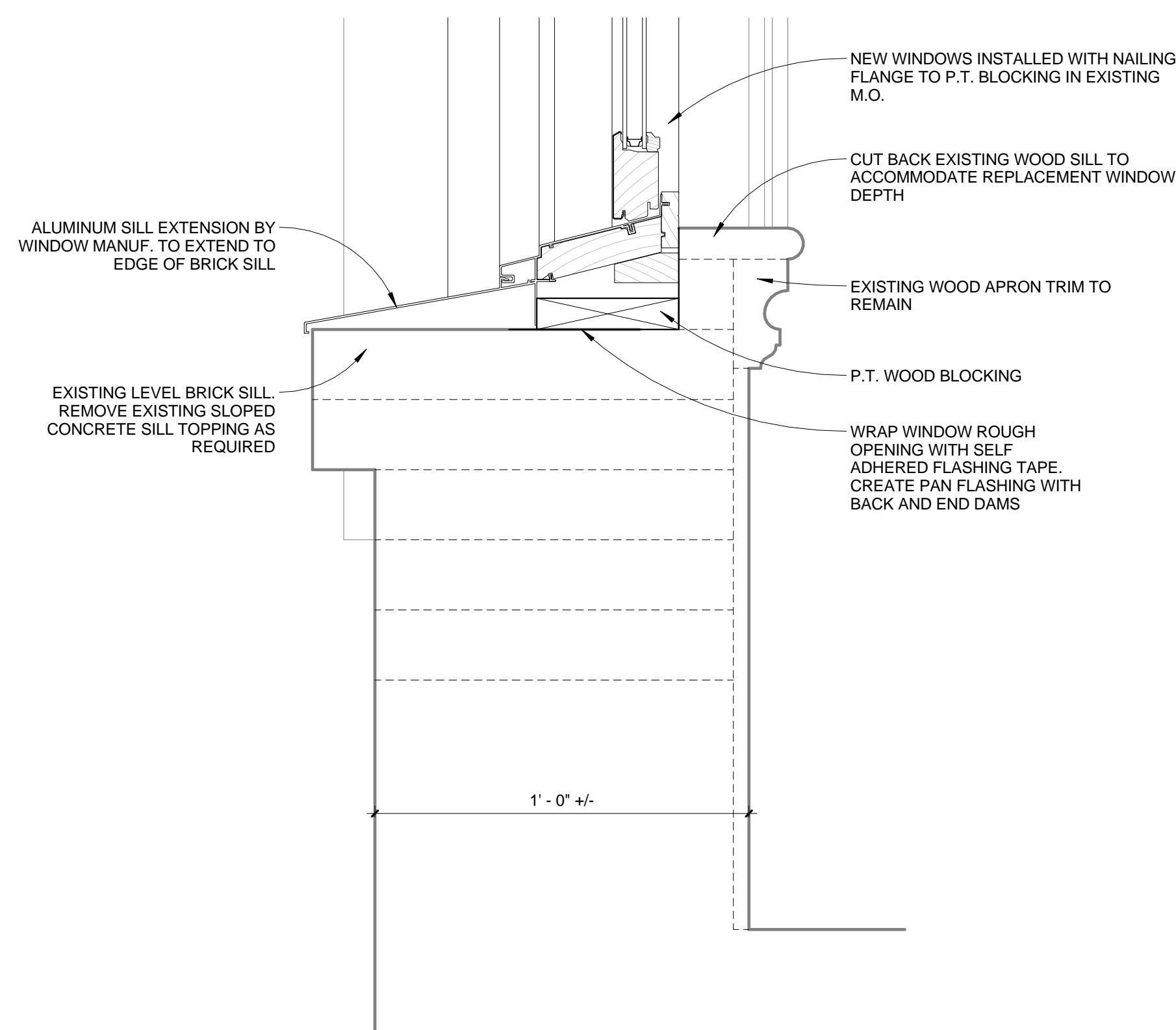
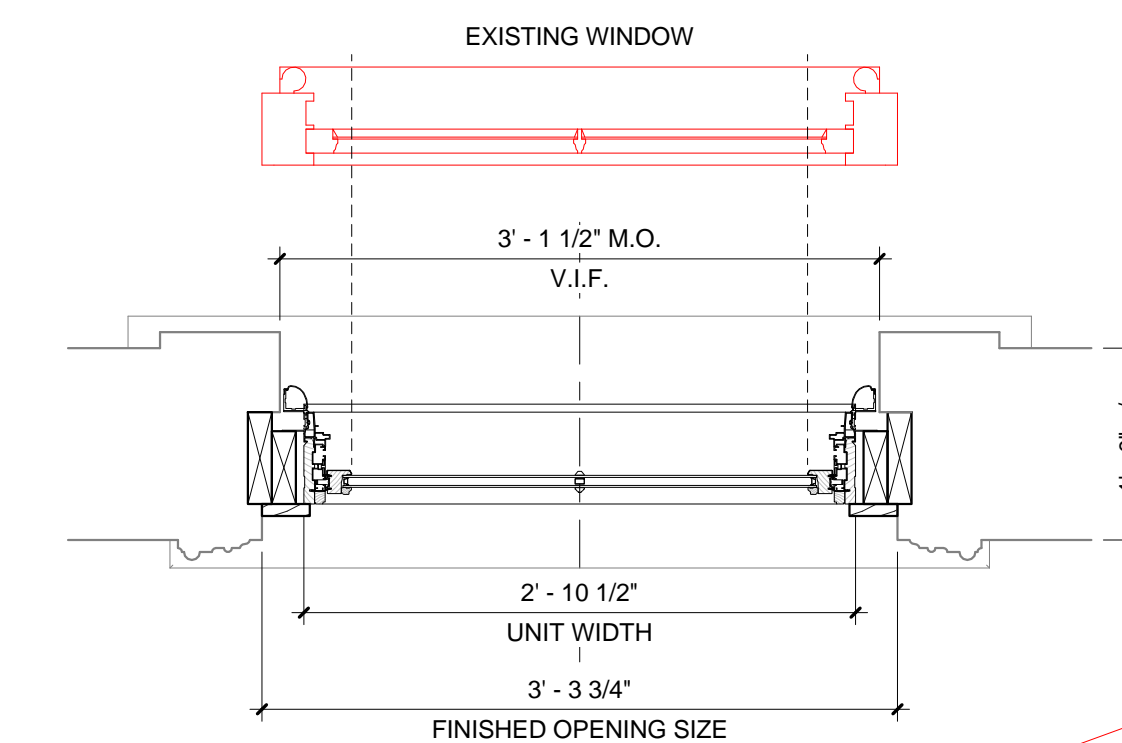
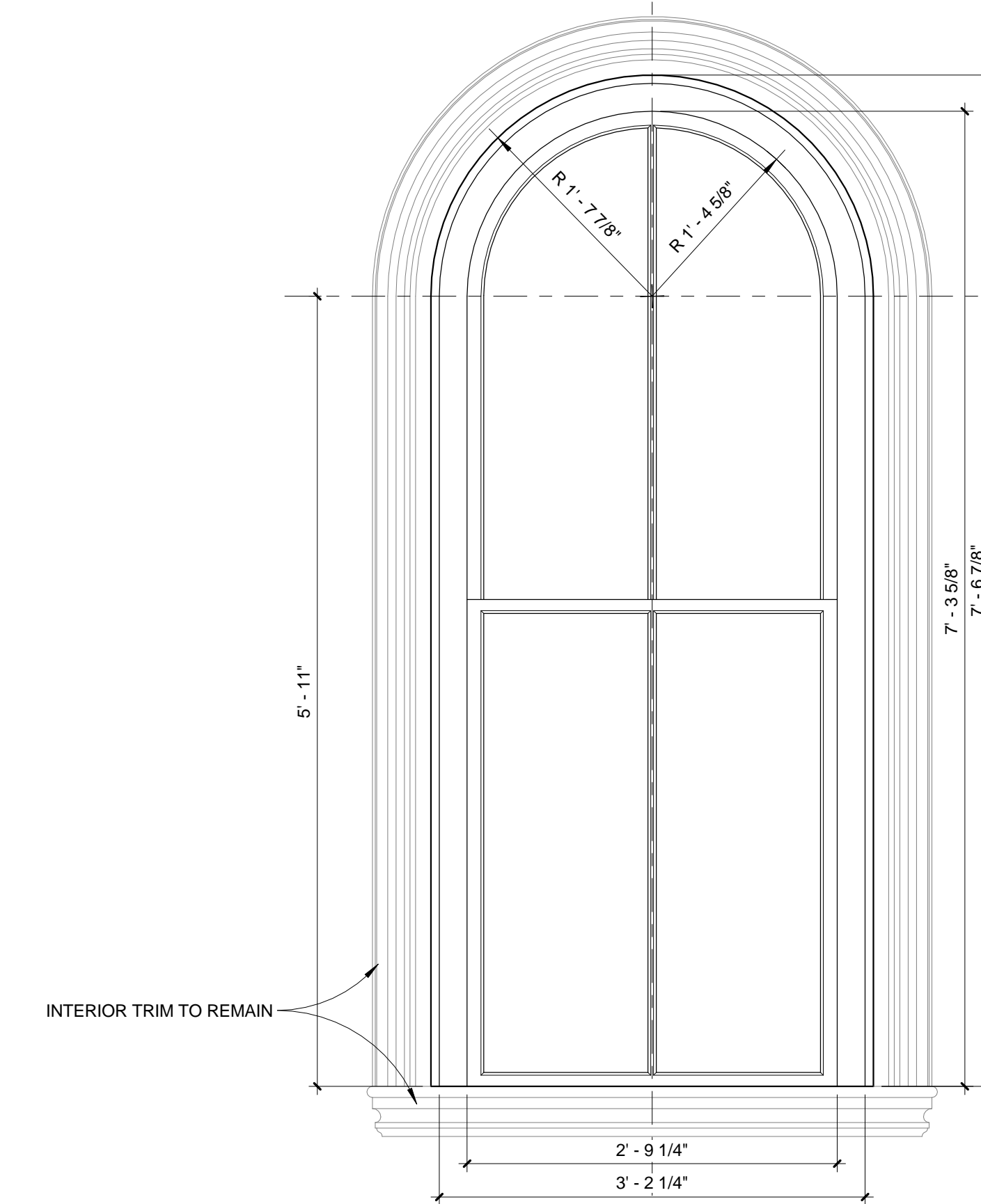
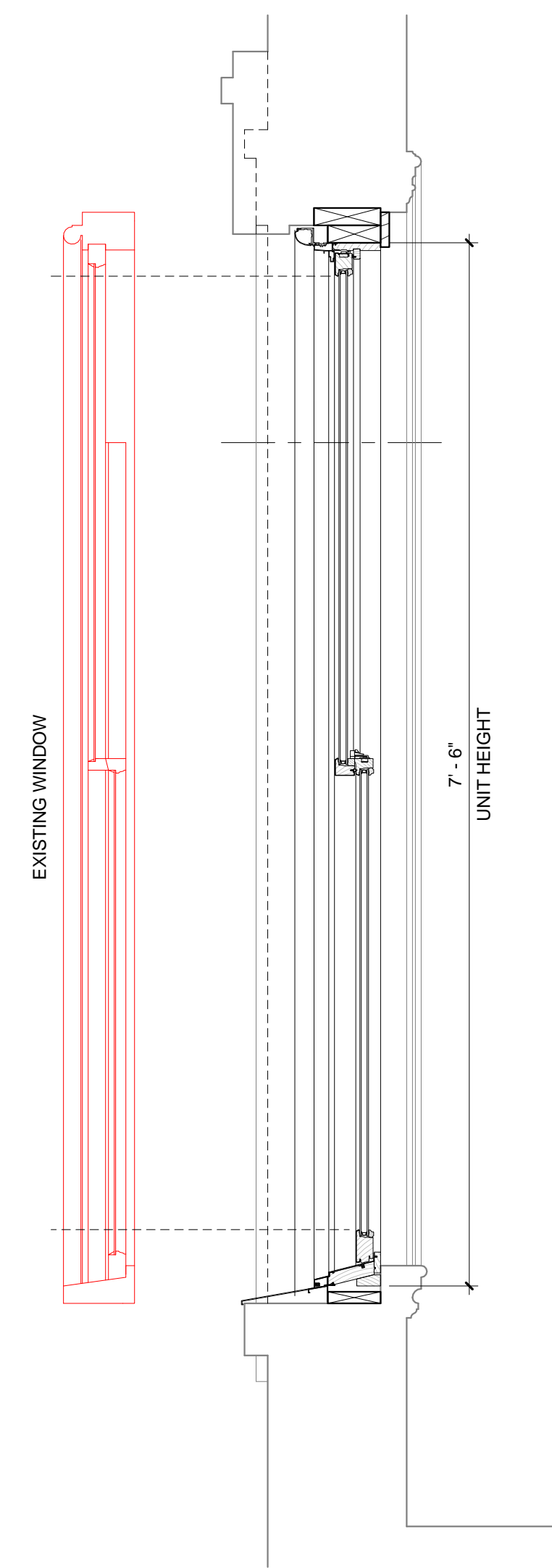
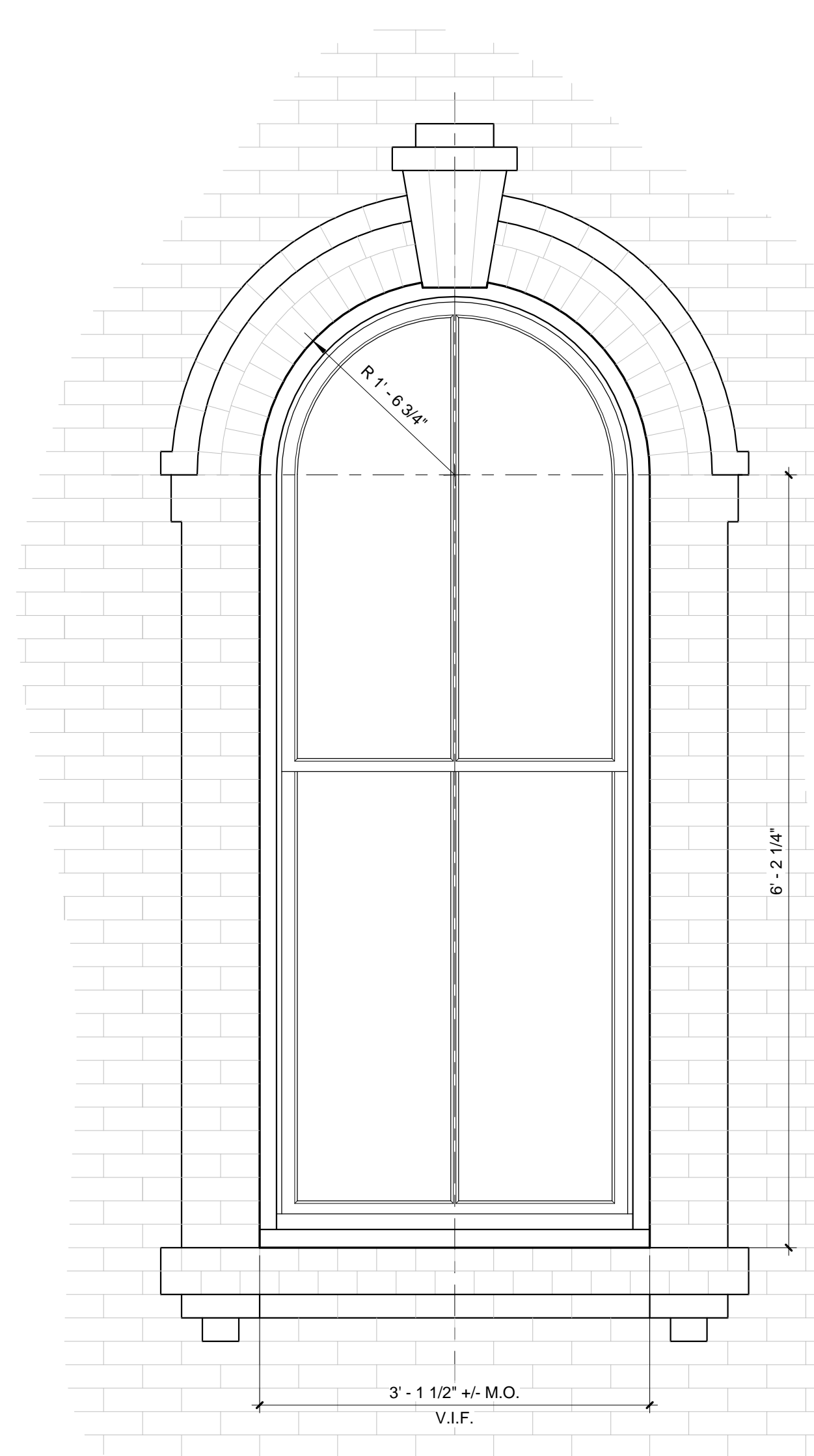


1 ARCH WINDOW - HEAD
3" = 1'-0"



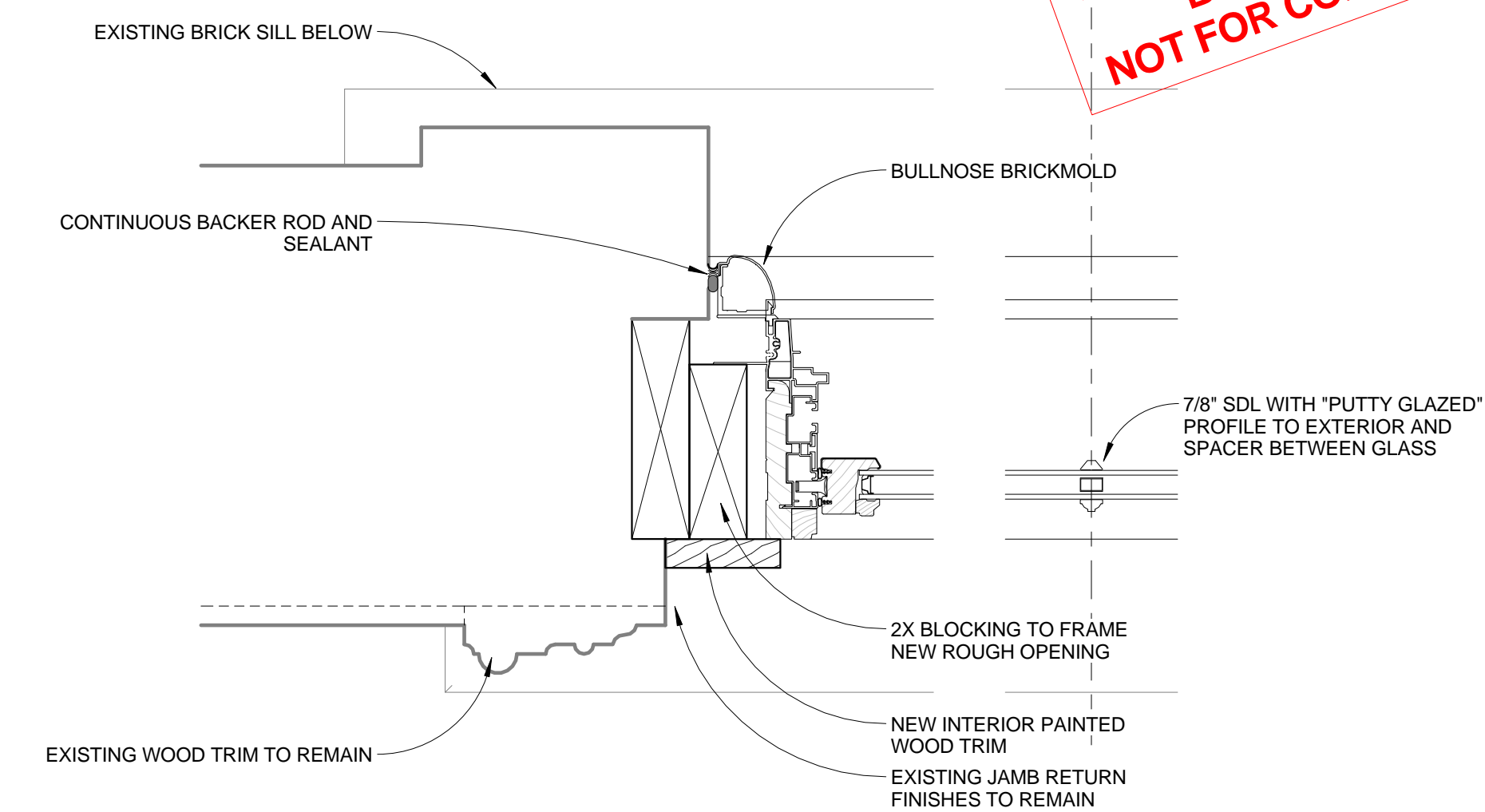
2 ARCH WINDOW - SILL
3" = 1'-0"



3 ARCH WINDOW DETAILS
1" = 1'-0"

GENERAL NOTES:

1. REMOVE EXISTING STORM WINDOWS AND ORIGINAL WOOD WINDOWS INCLUDING FULL FRAME AND WEIGHT POCKETS. REPLACE WITH CUSTOM ALUMINUM-CLAD WOOD ARCH-TOP WINDOWS TO MATCH EXISTING SIGHTLINES AS CLOSELY AS POSSIBLE, SIMULATED DIVIDED LIGHTS AND BRICKMOLD.
2. GC TO VERIFY ALL DIMENSIONS IN THE FIELD AND COORDINATE NEW WINDOW SIZES ACCORDINGLY.



4 ARCH WINDOW - JAMB
3" = 1'-0"

**HISTORIC PRESERVATION
BOARD REVIEW
NOT FOR CONSTRUCTION**