

WINDOW SCHEDULE							
MARK	M.O. WIDTH	M.O. HEIGHT	TYPE	DESCRIPTION	TRIM	DETAIL REF	
102	3'-0"	4'-1 1/2"	DOUBLE HUNG - 2/2 SDL	NEW WINDOW IN NEW M.O. - MATCH WIN 104	BULLNOSE BRICKMOLD	A404	
103	6'-0"	4'-1 1/2"	DOUBLE HUNG - 2/2 SDL	NEW WINDOW IN NEW M.O. - MATCH WIN 104	BULLNOSE BRICKMOLD	A404	
104	3'-0"	4'-1 1/2"	DOUBLE HUNG - 2/2 SDL	NEW WINDOW IN EXISTING M.O.	BULLNOSE BRICKMOLD	A404	
105	6'-9"	8'-2"	FIXED PICTURE WINDOW ELLIPTICAL TOP - 3/3 SDL	NEW WINDOW TO MATCH ORIGINAL HISTORIC DESIGN	BULLNOSE BRICKMOLD	A401	
106	6'-9"	8'-2"	FIXED PICTURE WINDOW ELLIPTICAL TOP - 3/3 SDL	NEW WINDOW TO MATCH ORIGINAL HISTORIC DESIGN	BULLNOSE BRICKMOLD	A401	
107	3'-0"	6'-11"	DOUBLE HUNG - 2/2 SDL	NEW WINDOW IN EXISTING M.O. - MATCH EXISTING	BULLNOSE BRICKMOLD		
108	5'-0"	6'-6"	(2) MULLED DOUBLE HUNG - 2/2 SDL	NEW WINDOW IN EXISTING M.O. - SIM TO WIN 107	BULLNOSE BRICKMOLD		
109	3'-0"	6'-9"	DOUBLE HUNG - 2/2 SDL	NEW WINDOW IN EXISTING M.O. - SIM TO WIN 107	BULLNOSE BRICKMOLD		
110	3'-0"	3'-11"	DOUBLE HUNG - 2/2 SDL	NEW WINDOW IN EXISTING M.O.	BULLNOSE BRICKMOLD	A404	
111	3'-0"	3'-11"	DOUBLE HUNG - 2/2 SDL	NEW WINDOW IN EXISTING M.O.	BULLNOSE BRICKMOLD	A404	
112	3'-0"	3'-11"	DOUBLE HUNG - 2/2 SDL	NEW WINDOW IN EXISTING M.O.	BULLNOSE BRICKMOLD	A404	
113	3'-0"	3'-11"	DOUBLE HUNG - 2/2 SDL	NEW WINDOW IN EXISTING M.O.	BULLNOSE BRICKMOLD	A404	
114	6'-0"	2'-6"	FIXED	NEW WINDOW IN NEW WOOD FRAMED OPENING	NONE		
201	3'-0"	3'-2"	DOUBLE HUNG - 2/2 SDL	NEW WINDOW IN NEW M.O. - MATCH WIN 203	BULLNOSE BRICKMOLD	A404	
202	3'-0"	3'-2"	DOUBLE HUNG - 2/2 SDL	NEW WINDOW IN NEW M.O. - MATCH WIN 203	BULLNOSE BRICKMOLD	A404	
203	3'-0"	3'-2"	DOUBLE HUNG - 2/2 SDL	NEW WINDOW IN EXISTING M.O.	BULLNOSE BRICKMOLD	A404	
204	3'-1 1/2"	7'-9"	DOUBLE HUNG ARCH TOP - 2/2 SDL	NEW WINDOW IN EXISTING M.O.	BULLNOSE BRICKMOLD	A402	
205	3'-1 1/2"	7'-9"	DOUBLE HUNG ARCH TOP - 2/2 SDL	NEW WINDOW IN EXISTING M.O.	BULLNOSE BRICKMOLD	A402	
206	3'-1 1/2"	7'-9"	DOUBLE HUNG ARCH TOP - 2/2 SDL	NEW WINDOW IN EXISTING M.O.	BULLNOSE BRICKMOLD	A402	
207	3'-1 1/2"	7'-9"	DOUBLE HUNG ARCH TOP - 2/2 SDL	NEW WINDOW IN EXISTING M.O.	BULLNOSE BRICKMOLD	A402	
208	3'-1 1/2"	7'-9"	DOUBLE HUNG ARCH TOP - 2/2 SDL	NEW WINDOW IN EXISTING M.O.	BULLNOSE BRICKMOLD	A402	
209	3'-1 1/2"	7'-9"	DOUBLE HUNG ARCH TOP - 2/2 SDL	NEW WINDOW IN EXISTING M.O.	BULLNOSE BRICKMOLD	A402	
210	3'-1 1/2"	7'-9"	DOUBLE HUNG ARCH TOP - 2/2 SDL	NEW WINDOW IN EXISTING M.O.	BULLNOSE BRICKMOLD	A402	
211	3'-1 1/2"	7'-9"	DOUBLE HUNG ARCH TOP - 2/2 SDL	NEW WINDOW IN EXISTING M.O.	BULLNOSE BRICKMOLD	A402	
212	3'-1 1/2"	7'-9"	DOUBLE HUNG ARCH TOP - 2/2 SDL	NEW WINDOW IN EXISTING M.O.	BULLNOSE BRICKMOLD	A402	
213	3'-1 1/2"	7'-9"	DOUBLE HUNG ARCH TOP - 2/2 SDL	NEW WINDOW IN EXISTING M.O.	BULLNOSE BRICKMOLD	A402	
214	3'-1 1/2"	7'-9"	DOUBLE HUNG ARCH TOP - 2/2 SDL	NEW WINDOW IN EXISTING M.O.	BULLNOSE BRICKMOLD	A402	
215	3'-1 1/2"	7'-9"	DOUBLE HUNG ARCH TOP - 2/2 SDL	NEW WINDOW IN EXISTING M.O.	BULLNOSE BRICKMOLD	A402	
216	3'-1 1/2"	7'-9"	DOUBLE HUNG ARCH TOP - 2/2 SDL	NEW WINDOW IN EXISTING M.O.	BULLNOSE BRICKMOLD	A402	
217	3'-1 1/2"	7'-9"	DOUBLE HUNG ARCH TOP - 2/2 SDL	NEW WINDOW IN EXISTING M.O.	BULLNOSE BRICKMOLD	A402	
218	3'-4"	3'-2"	DOUBLE HUNG - 2/2 SDL	NEW WINDOW IN EXISTING M.O.	BULLNOSE BRICKMOLD	A404	
219	3'-0"	3'-6"	DOUBLE HUNG - 2/2 SDL	NEW WINDOW IN EXISTING M.O.	BULLNOSE BRICKMOLD	A404	
220	3'-0"	3'-2"	DOUBLE HUNG - 2/2 SDL	NEW WINDOW IN EXISTING M.O.	BULLNOSE BRICKMOLD	A404	
221	3'-0"	3'-6"	DOUBLE HUNG - 2/2 SDL	NEW WINDOW IN EXISTING M.O.	BULLNOSE BRICKMOLD	A404	
222	3'-0"	3'-2"	DOUBLE HUNG - 2/2 SDL	NEW WINDOW IN EXISTING M.O.	BULLNOSE BRICKMOLD	A404	
223	5'-8"	4'-6"	(2) MULLED DOUBLE HUNG - 2/2 SDL	NEW WINDOW IN EXISTING WOOD FRAMED OPENING	NONE		
301	2'-11"	5'-9"	DOUBLE HUNG - 2/2 SDL	NEW WINDOW IN EXISTING WOOD FRAMED OPENING	NONE	A403	
302	2'-11"	5'-9"	DOUBLE HUNG - 2/2 SDL	NEW WINDOW IN EXISTING WOOD FRAMED OPENING	NONE	A403	
303	2'-11"	5'-9"	DOUBLE HUNG - 2/2 SDL	NEW WINDOW IN EXISTING WOOD FRAMED OPENING	NONE	A403	
304	2'-11"	5'-9"	DOUBLE HUNG - 2/2 SDL	NEW WINDOW IN EXISTING WOOD FRAMED OPENING	NONE	A403	
305	2'-11"	5'-9"	DOUBLE HUNG - 2/2 SDL	NEW WINDOW IN EXISTING WOOD FRAMED OPENING	NONE	A403	
306	2'-11"	5'-9"	DOUBLE HUNG - 2/2 SDL	NEW WINDOW IN EXISTING WOOD FRAMED OPENING	NONE	A403	
307	2'-11"	5'-9"	DOUBLE HUNG - 2/2 SDL	NEW WINDOW IN EXISTING WOOD FRAMED OPENING	NONE	A403	
308	2'-11"	5'-9"	DOUBLE HUNG - 2/2 SDL	NEW WINDOW IN EXISTING WOOD FRAMED OPENING	NONE	A403	
309	2'-11"	5'-9"	DOUBLE HUNG - 2/2 SDL	NEW WINDOW IN EXISTING WOOD FRAMED OPENING	NONE	A403	
310	2'-11"	5'-9"	DOUBLE HUNG - 2/2 SDL	NEW WINDOW IN EXISTING WOOD FRAMED OPENING	NONE	A403	

- NOTES:
1. ALL WINDOW ROUGH OPENING SIZES SHALL BE VERIFIED IN THE FIELD BY THE CONTRACTOR.
 2. ALL REPLACEMENT WINDOWS TO BE CUSTOM ALUMINUM-CLAD WOOD MATCHING SIGHTLINES AND PROFILES OF ORIGINAL WINDOWS AS CLOSELY AS POSSIBLE.
 3. SIMULATED DIVIDED LIGHTS TO BE 7/8" WIDTH WITH "PUTTY GLAZED" PROFILE TO EXTERIOR AND SPACER BAR BETWEEN GLAZING.
 4. ALL WINDOWS TO BE DOUBLE-GLAZED WITH HIGH VLT: 70+



2 NORTH ELEVATION
1/4" = 1'-0"

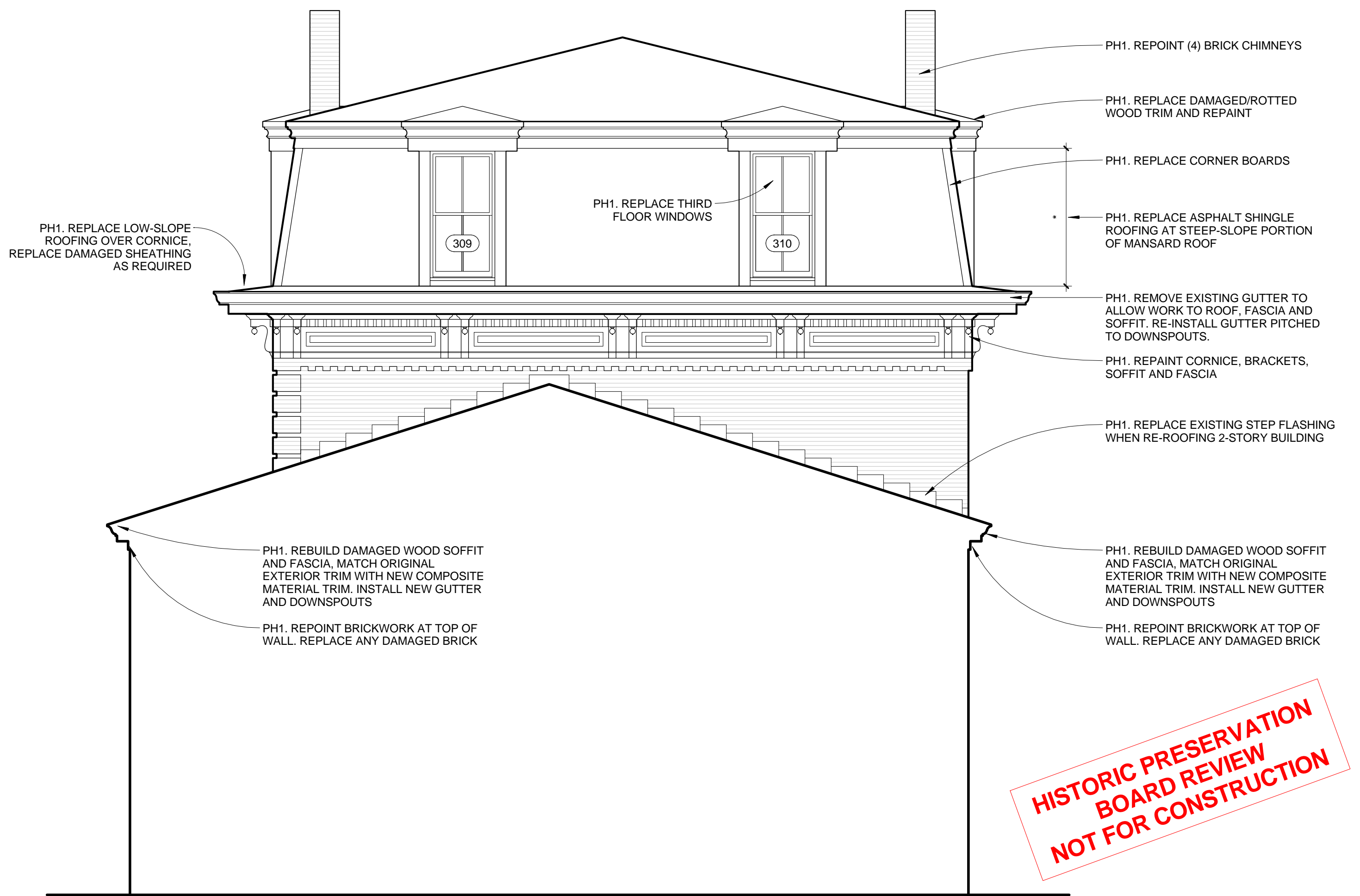
WALL AREA WITH 10' SEPARATION DISTANCE FROM ADJACENT BUILDING: 2,190 SF
ALLOWABLE EXTERIOR WALL OPENING AREA 15% (PER IBC TABLE 705.8): 328.5 SF
EXISTING WINDOW AREA: 222 SF
PROPOSED AREA OF NEW WINDOWS: 58 SF
TOTAL WINDOW AREA (EXISTING + NEW): 280 SF - 12.75%

PH2. CREATE (4) NEW WINDOW OPENINGS WITH NEWSALVAGED BRICK TOOTHED-IN AT JAMBS TO AVOID EXPOSURE OF CUT BRICK ENDS. PROVIDE ROWLOCK BRICK SILLS TO MATCH EXISTING WINDOW OPENINGS. REPOINT/REPAIR BRICK AT JAMBS WITHIN 2'-0" FOR FULL DEPTH OF WALL FOR SOLID/SOUND WALL IN LIKE-NEW CONDITION

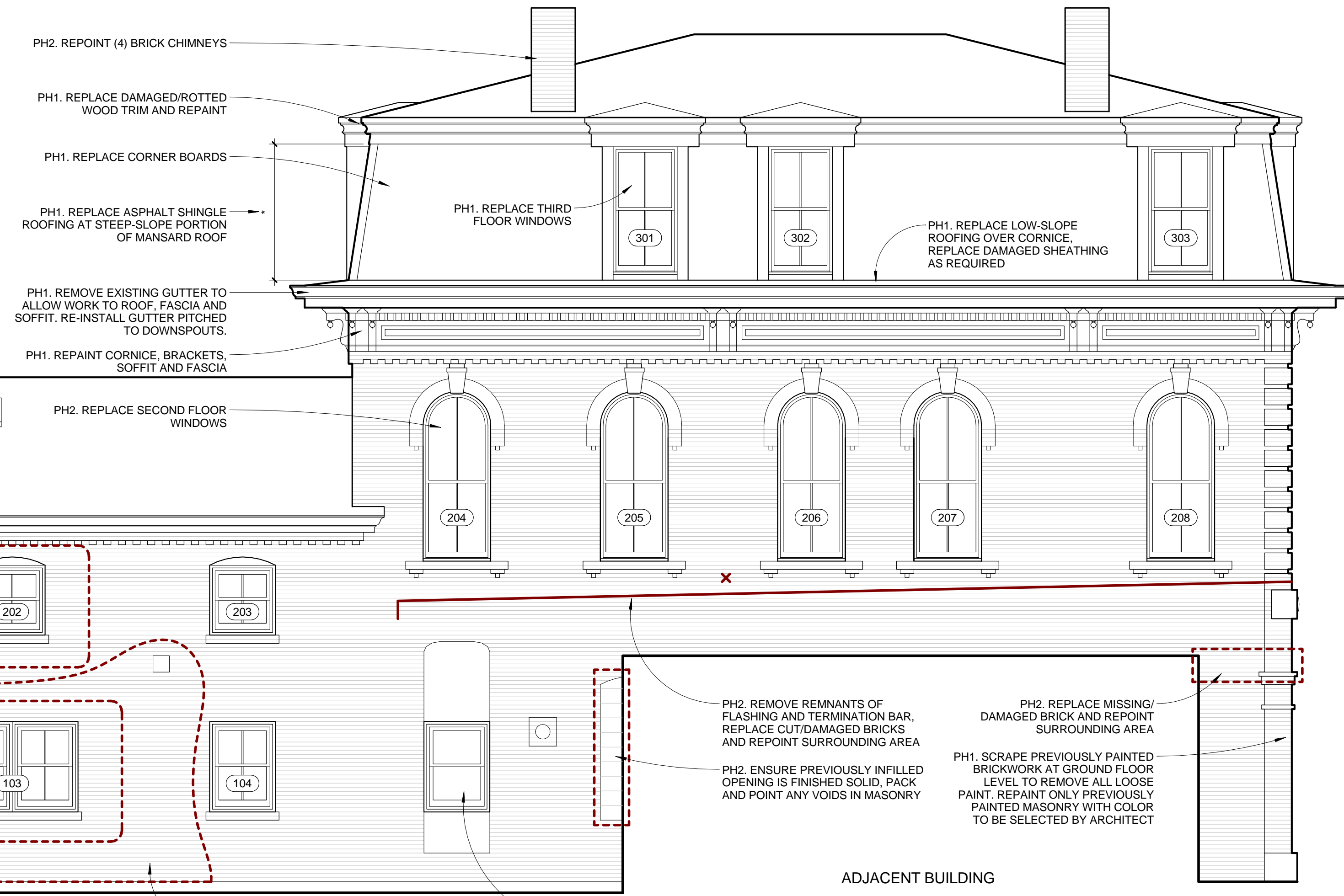
WINDOW 102: PROVIDE NEW L 3 1/2 X 3 1/2 X 1/4" HDG STEEL LINTEL PER BRICK WYTHE
WINDOW 103: PROVIDE NEW L 5 1/2 X 3 1/2 X 5/16" HDG STEEL LINTEL PER BRICK WYTHE
WINDOWS 201 & 202: PROVIDE BRICK ARCH AT HEAD TO MATCH WINDOW 203

PH2. REMOVE AREAS OF POORLY REPOINTED PORTLAND CEMENT MORTAR AND SURFACE MORTAR. REPOINT AS REQUIRED WITH MORTAR MATCHING COMPOSITION OF ORIGINAL. RE-STACK BRICK IN AREAS WHERE MORTAR IS SEVERLY DETERIORATED

WINDOW REPLACED UNDER PREVIOUS PHASE OF WORK



1 EAST ELEVATION
1/4" = 1'-0"



ADJACENT BUILDING

HISTORIC PRESERVATION BOARD REVIEW NOT FOR CONSTRUCTION

LEARNINGWORKS
181 BRACKETT STREET, PORTLAND, MAINE

BR BURN
architecture for life
20 Maple St Suite 202 Portland, ME 04101 207-774-6462

CONSULTANTS:

REVISIONS:

ISSUED: 04/01/15
PROJECT No: 1503
DRAWN BY: RIP
CHECKED BY: HWH
SHEET TITLE: ELEVATIONS & WINDOW SCHEDULE

A202