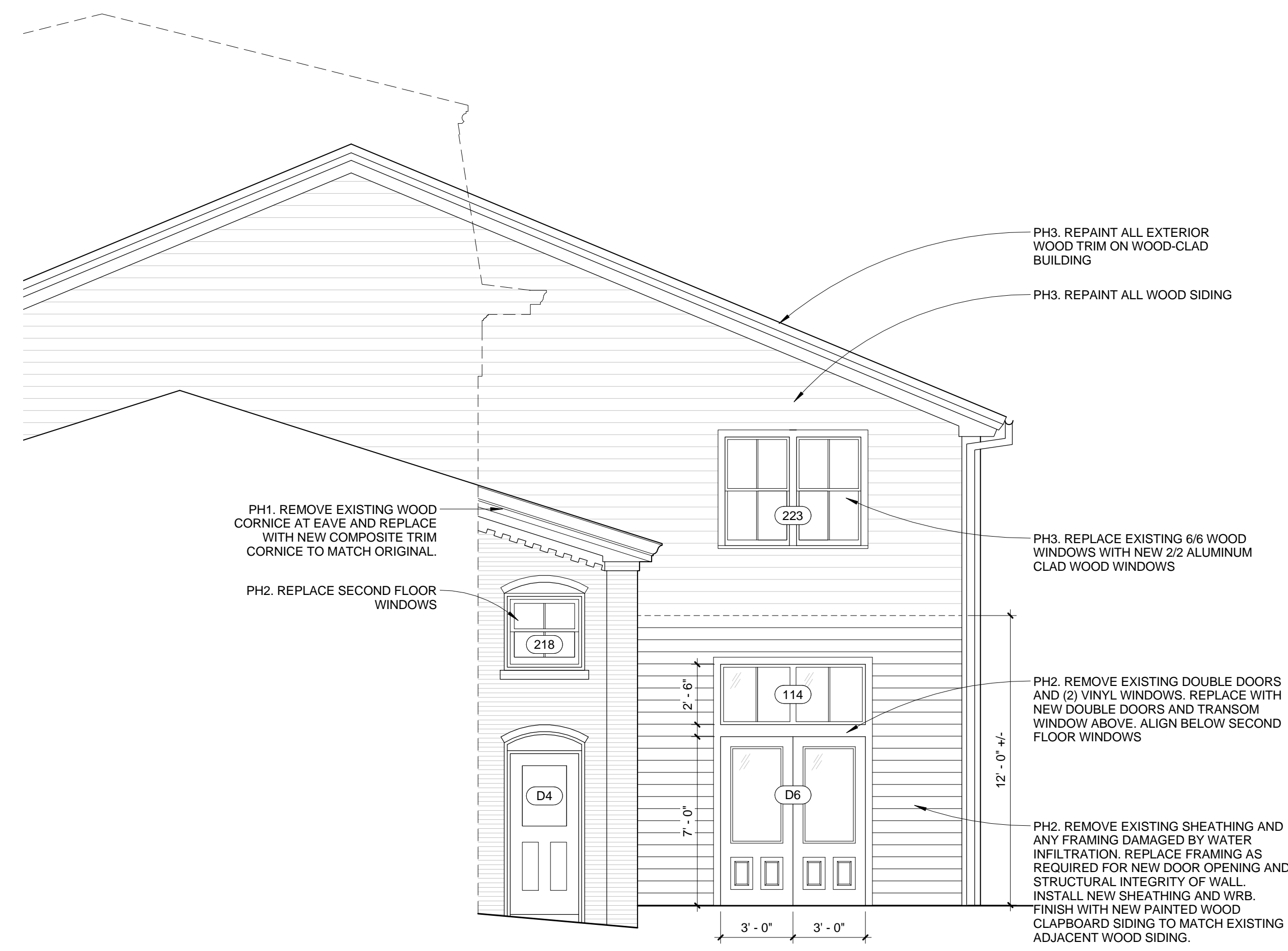
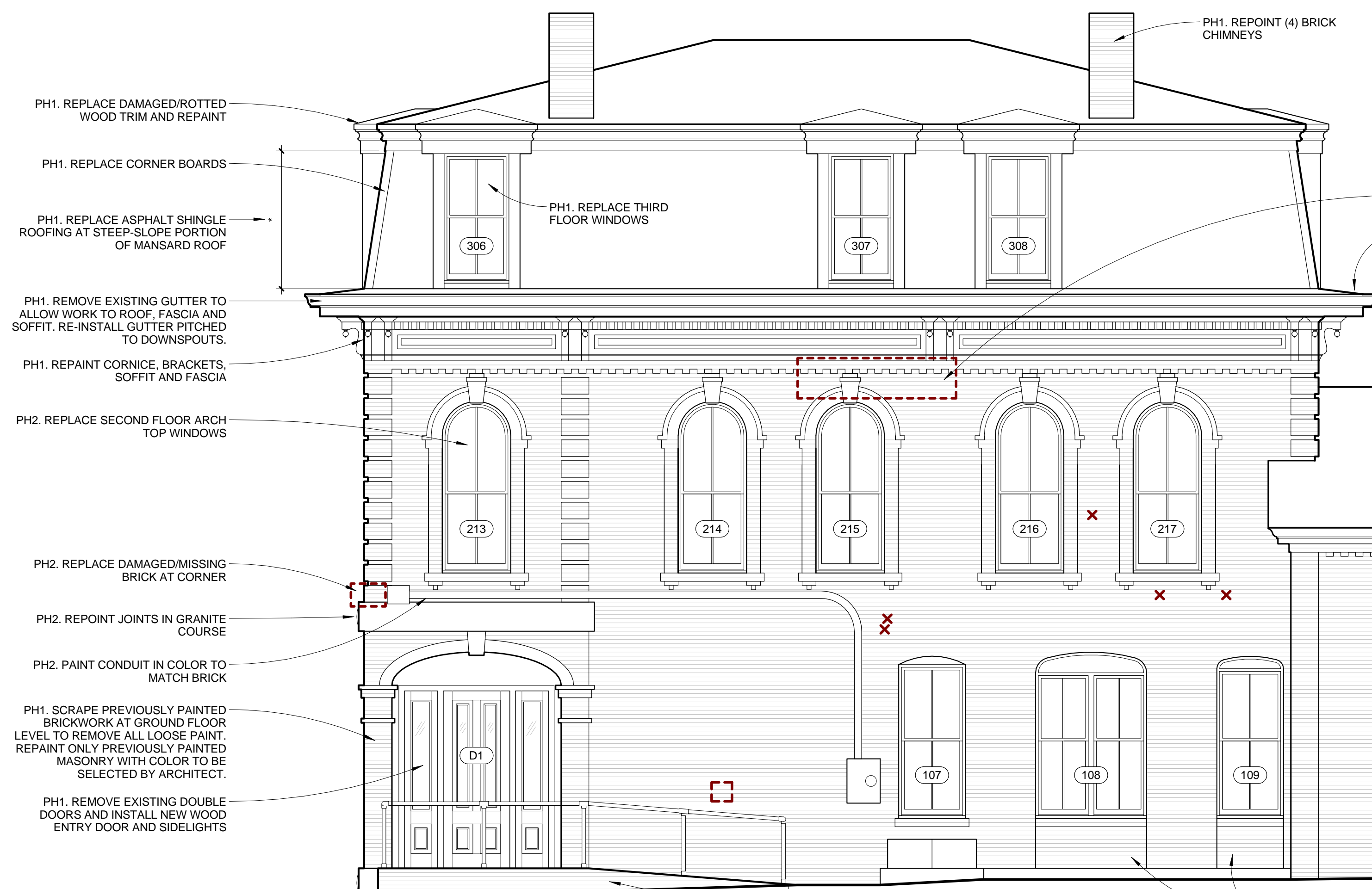


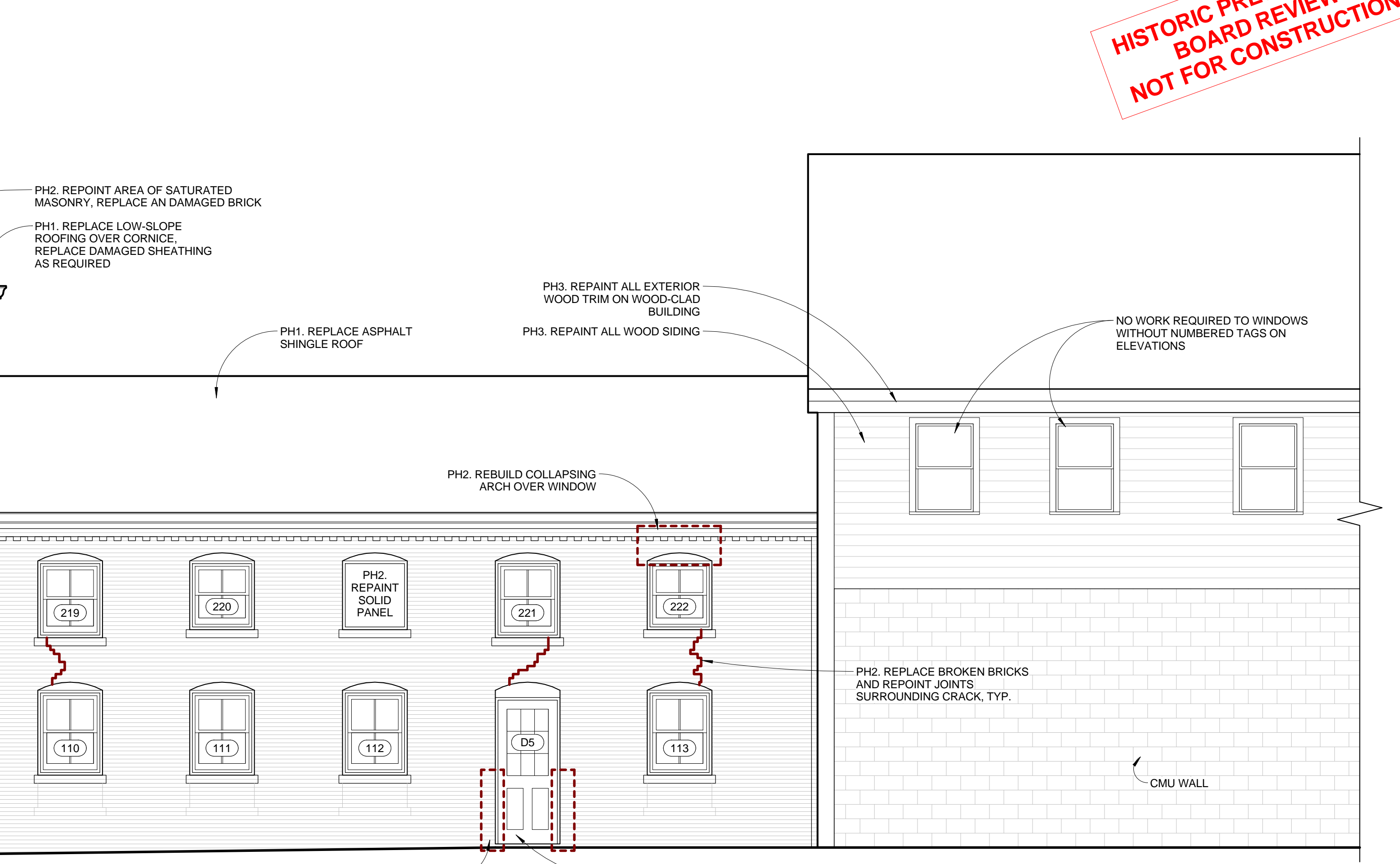
1 WEST ELEVATION - STREETFRONT
1/4" = 1'-0"



2 WEST ELEVATION - BACK BUILDINGS
1/4" = 1'-0"



3 SOUTH ELEVATION
1/4" = 1'-0"



**HISTORIC PRESERVATION
BOARD REVIEW
NOT FOR CONSTRUCTION**

- PH1. REPOINT (4) BRICK CHIMNEYS
- PH1. REPLACE DAMAGED/ROTTED WOOD TRIM AND REPAINT
- PH1. REPLACE CORNER BOARDS
- PH1. REPLACE ASPHALT SHINGLE ROOFING AT STEEP-SLOPE PORTION OF MANSARD ROOF
- PH1. REMOVE EXISTING GUTTER TO ALLOW WORK TO ROOF, FASCIA AND SOFFIT. RE-INSTALL GUTTER PITCHED TO DOWNSPOUTS.
- PH1. REPAINT CORNICE, BRACKETS, SOFFIT AND FASCIA
- PH2. REPLACE SECOND FLOOR WINDOWS
- PH2. REMOVE METAL SCREW-EYES AND REPOINT BRICKWORK AS REQUIRED
- PH2. REMOVE FLASHING TERMINATION BAR, REPLACE DAMAGED BRICK AND REPOINT BRICKWORK
- PH2. REPOINT JOINTS IN GRANITE COURSE
- PH2. REBUILD WINDOW SILL AND REPOINT MASONRY BELOW
- PH1. REMOVE WINDOWS AND WALL INFILL IN ARCHED OPENING. INSTALL NEW WINDOWS AND WOOD PANELING BELOW
- PH1. SCRAPE PREVIOUSLY PAINTED BRICKWORK AT GROUND FLOOR LEVEL TO REMOVE ALL LOOSE PAINT. REPAINT ONLY PREVIOUSLY PAINTED MASONRY WITH COLOR TO BE SELECTED BY ARCHITECT.
- PH1. PAINTED WOOD PANELS
- PH1. EXISTING BRICK INFILL AT BASE TO REMAIN

- PH1. REPLACE LOW-SLOPE ROOFING OVER CORNICE, REPLACE DAMAGED SHEATHING AS REQUIRED.

- PH2. REPLACE CRACKED BRICK AND REPOINT SURROUNDING AREA

- PH1. REMOVE EXISTING DOOR AND FRAME AND REPLACE WITH NEW WOOD DOOR TO MATCH STYLE OF ORIGINAL

- PH1. DEMO EXISTING CONCRETE AND BRICK ENTRY RAMP. EXCAVATE AND INSTALL NEW POURED CONCRETE FROST WALLS AND FOOTINGS TO DEFINE EXTENT OF NEW RAMP TO MATCH SIZE OF EXISTING. POUR NEW CONCRETE RAMP AT 1:12 PITCH WITH LEVEL LANDING AT TOP AND BOTTOM. FACE CONCRETE FROST WALLS AND RAMP SURFACE WITH BRICK PAVERS. INSTALL NEW PAINTED METAL PIPE RAIL.

- PH1. REPOINT (4) BRICK CHIMNEYS

- PH2. REPOINT AREA OF SATURATED MASONRY, REPLACE AN DAMAGED BRICK
- PH1. REPLACE LOW-SLOPE ROOFING OVER CORNICE, REPLACE DAMAGED SHEATHING AS REQUIRED

- PH1. REPLACE ASPHALT SHINGLE ROOF

- PH2. REBUILD COLLAPSING ARCH OVER WINDOW

- PH3. REPAINT ALL EXTERIOR WOOD TRIM ON WOOD-CLAD BUILDING
- PH3. REPAINT ALL WOOD SIDING

NO WORK REQUIRED TO WINDOWS WITHOUT NUMBERED TAGS ON ELEVATIONS

- PH2. REPLACE BROKEN BRICKS AND REPOINT JOINTS SURROUNDING CRACK, TYP.

CMU WALL

- PH1. DEMO EXISTING CONCRETE AND BRICK ENTRY RAMP. INSTALL NEW POURED CONCRETE FROST WALLS AND FOOTINGS. NEW CONCRETE RAMP AT 1:12 PITCH WITH LEVEL LANDING AT TOP AND BOTTOM. FACE CONCRETE FROST WALLS AND RAMP SURFACE WITH BRICK PAVERS. INSTALL NEW PAINTED METAL PIPE RAIL.

- PH2. REMOVE WINDOWS AND WOOD FRAMED INFILL AT ORIGINAL DOOR OPENINGS. INSTALL NEW WINDOWS WITH BRICK SILLS AND BRICK WALL INFILL BELOW. SET BACK NEW BRICK 1/2" FROM FACE OF ADJACENT BRICK

- PH1. TOOTH IN NEW/SALVAGED BRICK AT LOWER PORTION OF DOOR JAMBS WHERE CUT/BROKEN BRICKS ARE EXPOSED

- PH1. FILL VOID SPACE BETWEEN DOOR FRAME AND WALL WITH SPRAY FOAM INSULATION. INSTALL NEW SHEATHING OVER FRAMING, WRB AND PAINTED COMPOSITE MATERIAL TRIM AROUND DOOR. PROVIDE SEALANT BETWEEN TRIM AND MASONRY.

CONSULTANTS:

REVISIONS:

ISSUED: 04/01/15
PROJECT No: 1503
DRAWN BY: RIP
CHECKED BY: HWK
SHEET TITLE: ELEVATIONS