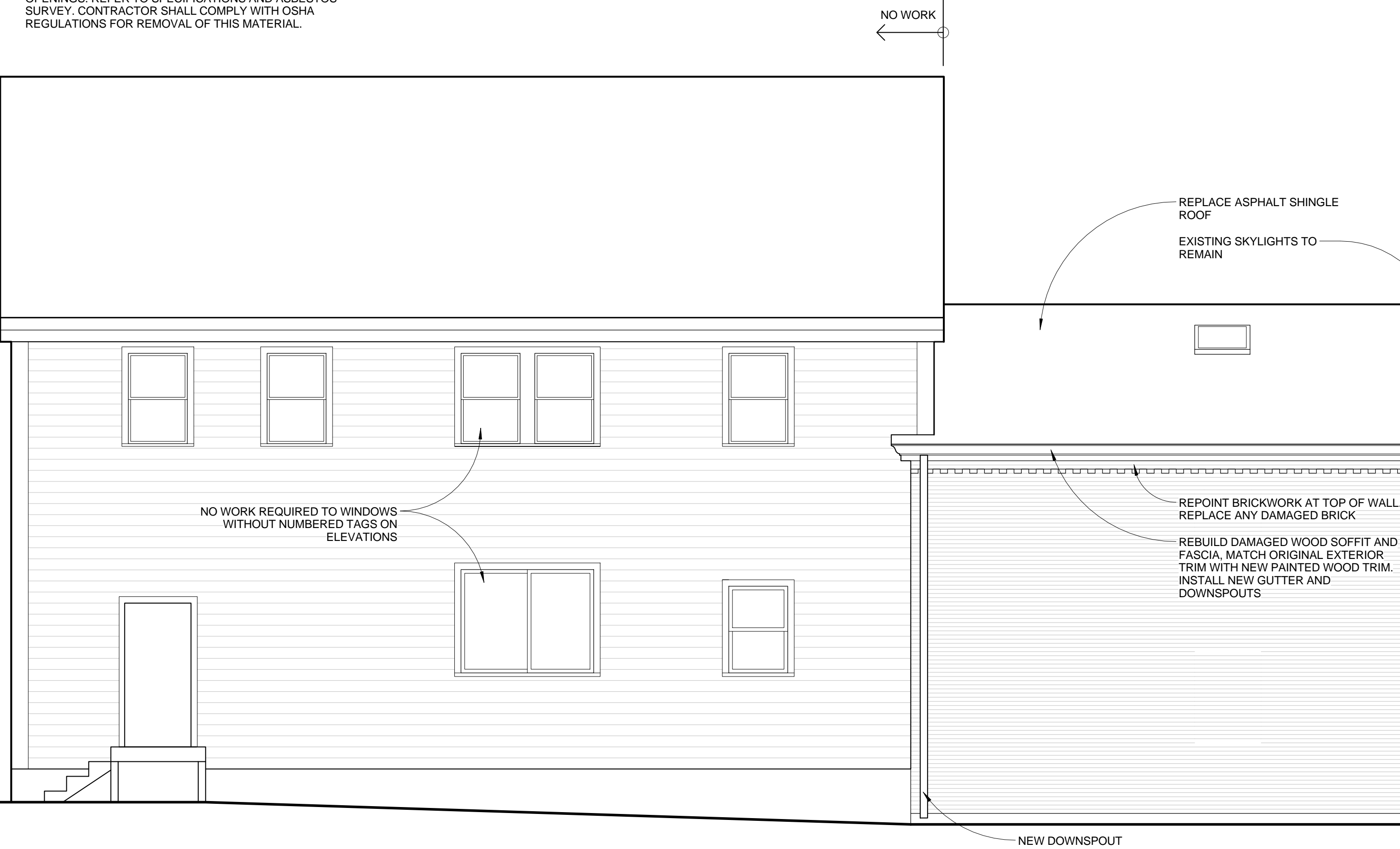


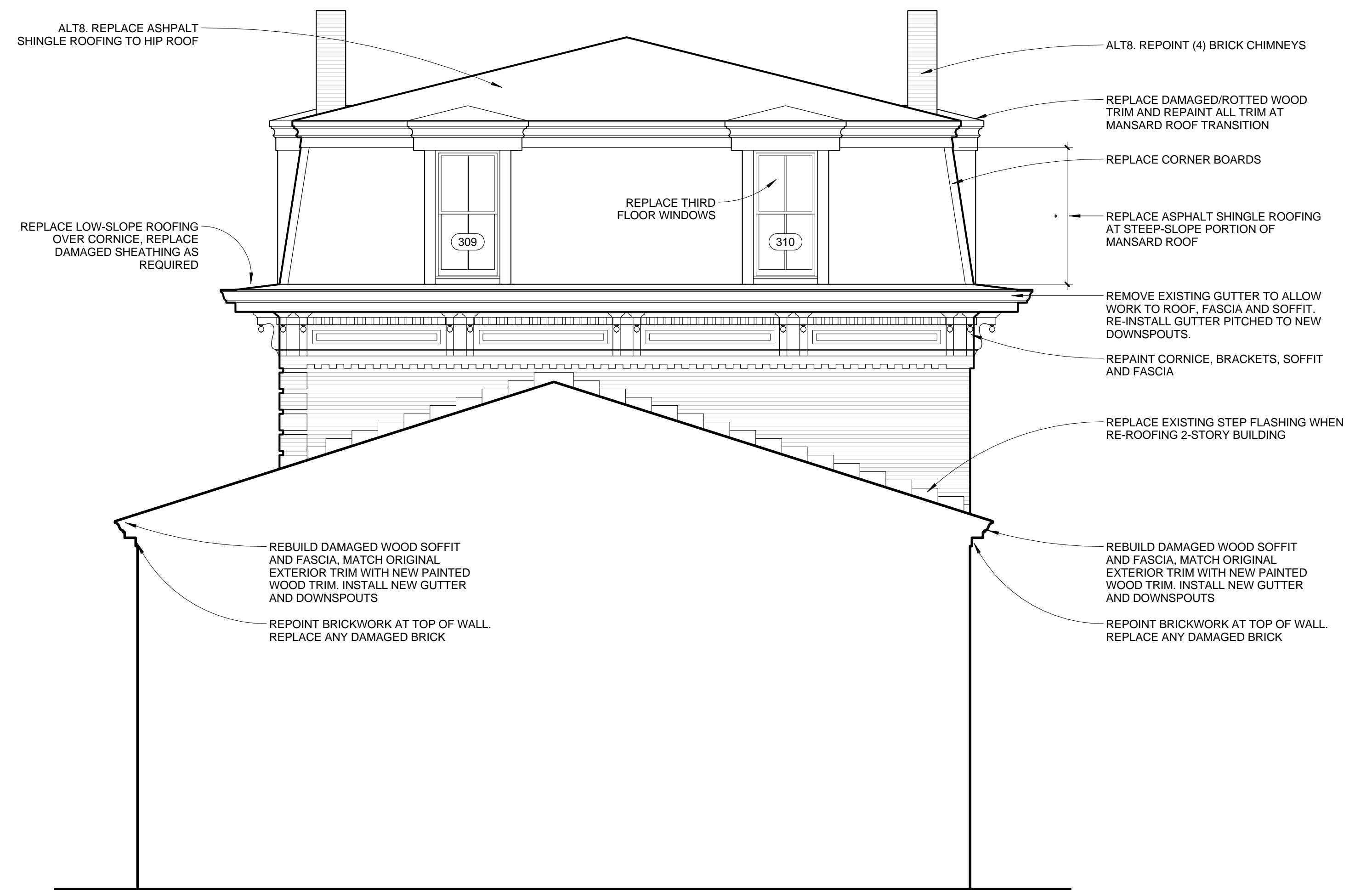
WINDOW SCHEDULE						
MARK	M.O. WIDTH	M.O. HEIGHT	TYPE	DESCRIPTION	TRIM	DETAIL REF
102	9'-0"	4'-1 1/2"	DOUBLE HUNG	NEW WINDOW IN NEW M.O. - MATCH WIN 104	BULLNOSE BRICKMOLD	A404
103	9'-0"	4'-1 1/2"	DOUBLE HUNG	NEW WINDOW IN NEW M.O. - MATCH WIN 104	BULLNOSE BRICKMOLD	A404
104	3'-0"	4'-1 1/2"	DOUBLE HUNG	NEW WINDOW IN EXISTING M.O.	BULLNOSE BRICKMOLD	A404
105	6'-9"	8'-2"	FIXED PICTURE WINDOW ELLIPTICAL TOP - 3/3 SDL	NEW WINDOW TO MATCH ORIGINAL HISTORIC DESIGN	BULLNOSE BRICKMOLD	A401
106	6'-9"	8'-2"	FIXED PICTURE WINDOW ELLIPTICAL TOP - 3/3 SDL	NEW WINDOW TO MATCH ORIGINAL HISTORIC DESIGN	BULLNOSE BRICKMOLD	A401
107	3'-0"	6'-11"	DOUBLE HUNG - 2/2 SDL	NEW WINDOW IN EXISTING M.O. - MATCH EXISTING	BULLNOSE BRICKMOLD	A404
108	5'-0"	6'-6"	(2) MULLED DOUBLE HUNG - 2/2 SDL	NEW WINDOW IN EXISTING M.O. - SIM TO WIN 107	BULLNOSE BRICKMOLD	A404
109	3'-0"	6'-9"	DOUBLE HUNG - 2/2 SDL	NEW WINDOW IN EXISTING M.O. - SIM TO WIN 107	BULLNOSE BRICKMOLD	A404
110	3'-0"	3'-11"	DOUBLE HUNG - 2/2 SDL	NEW WINDOW IN EXISTING M.O.	BULLNOSE BRICKMOLD	A404
111	3'-0"	3'-11"	DOUBLE HUNG - 2/2 SDL	NEW WINDOW IN EXISTING M.O.	BULLNOSE BRICKMOLD	A404
112	3'-0"	3'-11"	DOUBLE HUNG - 2/2 SDL	NEW WINDOW IN EXISTING M.O.	BULLNOSE BRICKMOLD	A404
113	3'-0"	3'-11"	DOUBLE HUNG - 2/2 SDL	NEW WINDOW IN EXISTING M.O.	BULLNOSE BRICKMOLD	A404
114	6'-0"	2'-6"	FIXED	NEW WINDOW IN NEW WOOD FRAMED OPENING	NONE	
204	3'-0"	3'-2"	DOUBLE HUNG - 2/2 SDL	NEW WINDOW IN NEW M.O. - MATCH WIN 203	BULLNOSE BRICKMOLD	A404
205	3'-0"	3'-2"	DOUBLE HUNG - 2/2 SDL	NEW WINDOW IN NEW M.O. - MATCH WIN 203	BULLNOSE BRICKMOLD	A404
206	3'-0"	3'-2"	DOUBLE HUNG - 2/2 SDL	NEW WINDOW IN EXISTING M.O.	BULLNOSE BRICKMOLD	A404
207	3'-1 1/2"	7'-9"	DOUBLE HUNG ARCH TOP - 2/2 SDL	NEW WINDOW IN EXISTING M.O.	BULLNOSE BRICKMOLD	A402
208	3'-1 1/2"	7'-9"	DOUBLE HUNG ARCH TOP - 2/2 SDL	NEW WINDOW IN EXISTING M.O.	BULLNOSE BRICKMOLD	A402
209	3'-1 1/2"	7'-9"	DOUBLE HUNG ARCH TOP - 2/2 SDL	NEW WINDOW IN EXISTING M.O.	BULLNOSE BRICKMOLD	A402
210	3'-1 1/2"	7'-9"	DOUBLE HUNG ARCH TOP - 2/2 SDL	NEW WINDOW IN EXISTING M.O.	BULLNOSE BRICKMOLD	A402
211	3'-1 1/2"	7'-9"	DOUBLE HUNG ARCH TOP - 2/2 SDL	NEW WINDOW IN EXISTING M.O.	BULLNOSE BRICKMOLD	A402
212	3'-1 1/2"	7'-9"	DOUBLE HUNG ARCH TOP - 2/2 SDL	NEW WINDOW IN EXISTING M.O.	BULLNOSE BRICKMOLD	A402
213	3'-1 1/2"	7'-9"	DOUBLE HUNG ARCH TOP - 2/2 SDL	NEW WINDOW IN EXISTING M.O.	BULLNOSE BRICKMOLD	A402
214	3'-1 1/2"	7'-9"	DOUBLE HUNG ARCH TOP - 2/2 SDL	NEW WINDOW IN EXISTING M.O.	BULLNOSE BRICKMOLD	A402
215	3'-1 1/2"	7'-9"	DOUBLE HUNG ARCH TOP - 2/2 SDL	NEW WINDOW IN EXISTING M.O.	BULLNOSE BRICKMOLD	A402
216	3'-1 1/2"	7'-9"	DOUBLE HUNG ARCH TOP - 2/2 SDL	NEW WINDOW IN EXISTING M.O.	BULLNOSE BRICKMOLD	A402
217	3'-1 1/2"	7'-9"	DOUBLE HUNG ARCH TOP - 2/2 SDL	NEW WINDOW IN EXISTING M.O.	BULLNOSE BRICKMOLD	A402
218	3'-4"	3'-2"	DOUBLE HUNG - 2/2 SDL	NEW WINDOW IN EXISTING M.O.	BULLNOSE BRICKMOLD	A404
219	3'-0"	3'-6"	DOUBLE HUNG - 2/2 SDL	NEW WINDOW IN EXISTING M.O.	BULLNOSE BRICKMOLD	A404
220	3'-0"	3'-2"	DOUBLE HUNG - 2/2 SDL	NEW WINDOW IN EXISTING M.O.	BULLNOSE BRICKMOLD	A404
221	3'-0"	3'-6"	DOUBLE HUNG - 2/2 SDL	NEW WINDOW IN EXISTING M.O.	BULLNOSE BRICKMOLD	A404
222	3'-0"	3'-2"	DOUBLE HUNG - 2/2 SDL	NEW WINDOW IN EXISTING M.O.	BULLNOSE BRICKMOLD	A404
223	5'-8"	4'-6"	(2) MULLED DOUBLE HUNG - 2/2 SDL	NEW WINDOW IN EXISTING WOOD FRAMED OPENING	NONE	
301	2'-11"	5'-9"	DOUBLE HUNG - 2/2 SDL	NEW WINDOW IN EXISTING WOOD FRAMED OPENING	NONE	A403
302	2'-11"	5'-9"	DOUBLE HUNG - 2/2 SDL	NEW WINDOW IN EXISTING WOOD FRAMED OPENING	NONE	A403
303	2'-11"	5'-9"	DOUBLE HUNG - 2/2 SDL	NEW WINDOW IN EXISTING WOOD FRAMED OPENING	NONE	A403
304	2'-11"	5'-9"	DOUBLE HUNG - 2/2 SDL	NEW WINDOW IN EXISTING WOOD FRAMED OPENING	NONE	A403
305	2'-11"	5'-9"	DOUBLE HUNG - 2/2 SDL	NEW WINDOW IN EXISTING WOOD FRAMED OPENING	NONE	A403
306	2'-11"	5'-9"	DOUBLE HUNG - 2/2 SDL	NEW WINDOW IN EXISTING WOOD FRAMED OPENING	NONE	A403
307	2'-11"	5'-9"	DOUBLE HUNG - 2/2 SDL	NEW WINDOW IN EXISTING WOOD FRAMED OPENING	NONE	A403
308	2'-11"	5'-9"	DOUBLE HUNG - 2/2 SDL	NEW WINDOW IN EXISTING WOOD FRAMED OPENING	NONE	A403
309	2'-11"	5'-9"	DOUBLE HUNG - 2/2 SDL	NEW WINDOW IN EXISTING WOOD FRAMED OPENING	NONE	A403
310	2'-11"	5'-9"	DOUBLE HUNG - 2/2 SDL	NEW WINDOW IN EXISTING WOOD FRAMED OPENING	NONE	A403

NOTES:

1. ALL WINDOW ROUGH OPENING SIZES SHALL BE VERIFIED IN THE FIELD BY THE CONTRACTOR.
2. ALL REPLACEMENT WINDOWS TO BE CUSTOM ALUMINUM-CLAD WOOD MATCHING SIGHTLINES AND PROFILES OF ORIGINAL WINDOWS AS CLOSELY AS POSSIBLE.
3. SIMULATED DIVIDED LIGHTS TO BE 7/8" WIDTH WITH "PUTTY GLAZED" PROFILE TO EXTERIOR AND SPACER BAR BETWEEN GLAZING.
4. ALL WINDOWS TO BE DOUBLE-GLAZED WITH HIGH VLT; 70+.
5. EXISTING WINDOWS AND SURROUNDING FINISHES MAY HAVE LEAD-BASED PAINT APPLIED. REFER TO SPECIFICATIONS AND LEAD SURVEY. CONTRACTOR SHALL BE EPA CERTIFIED FOR LEAD-SAFE WORK PRACTICES AND COMPLY WITH OSHA REGULATIONS.
6. ASBESTOS CAULK HAS BEEN IDENTIFIED IN SMALL AMOUNTS AT RANDOM LOCATIONS BETWEEN WINDOWS AND MASONRY OPENINGS. CONTRACTOR SHALL COMPLY WITH OSHA REGULATIONS FOR REMOVAL OF THIS MATERIAL.



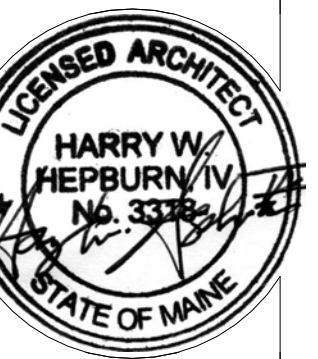
2 NORTH ELEVATION
1/4" = 1'-0"



1 EAST ELEVATION
1/4" = 1'-0"



ADJACENT BUILDING



LEARNINGWORKS
181 BRACKETT STREET, PORTLAND, MAINE

BR BURN
architecture for life
20 Hedges St. Suite 202 Portland, ME 04101 (207) 774-6462

CONSULTANTS:

REVISIONS:

ISSUED: 07/29/15
PROJECT No: 1503
DRAWN BY: RHP
CHECKED BY: HWH
SHEET TITLE:
ELEVATIONS & WINDOW SCHEDULE

A202