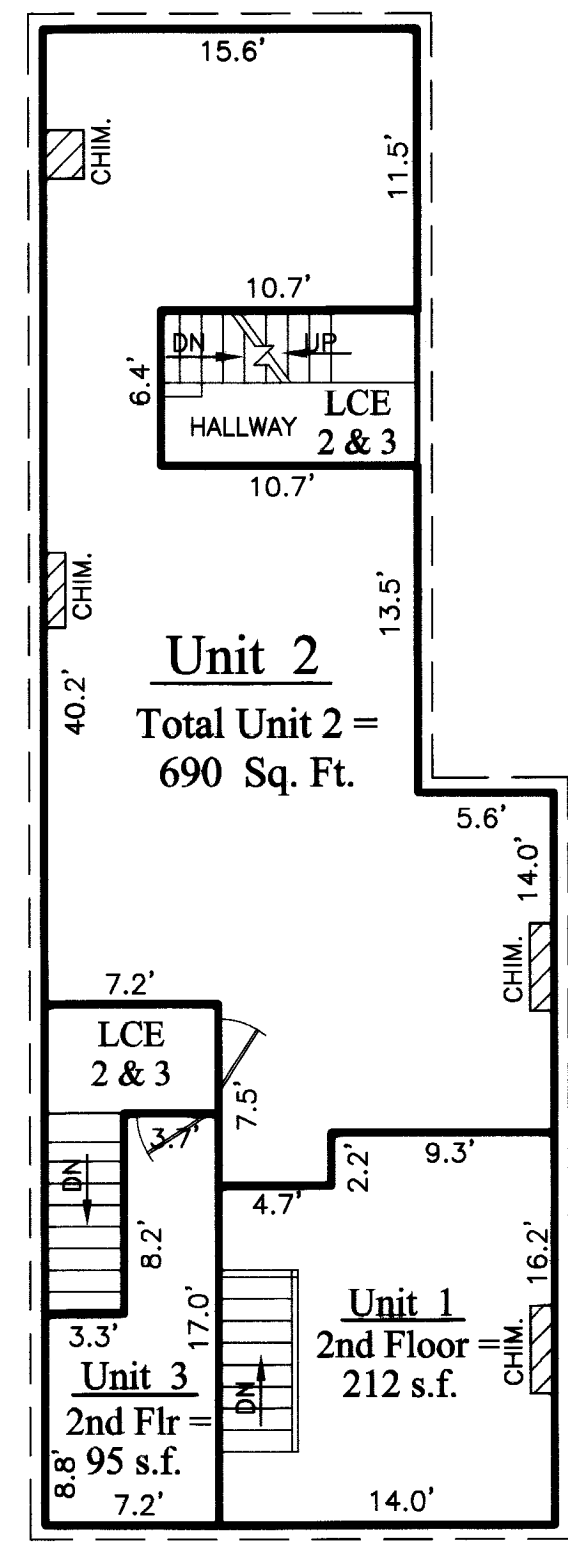
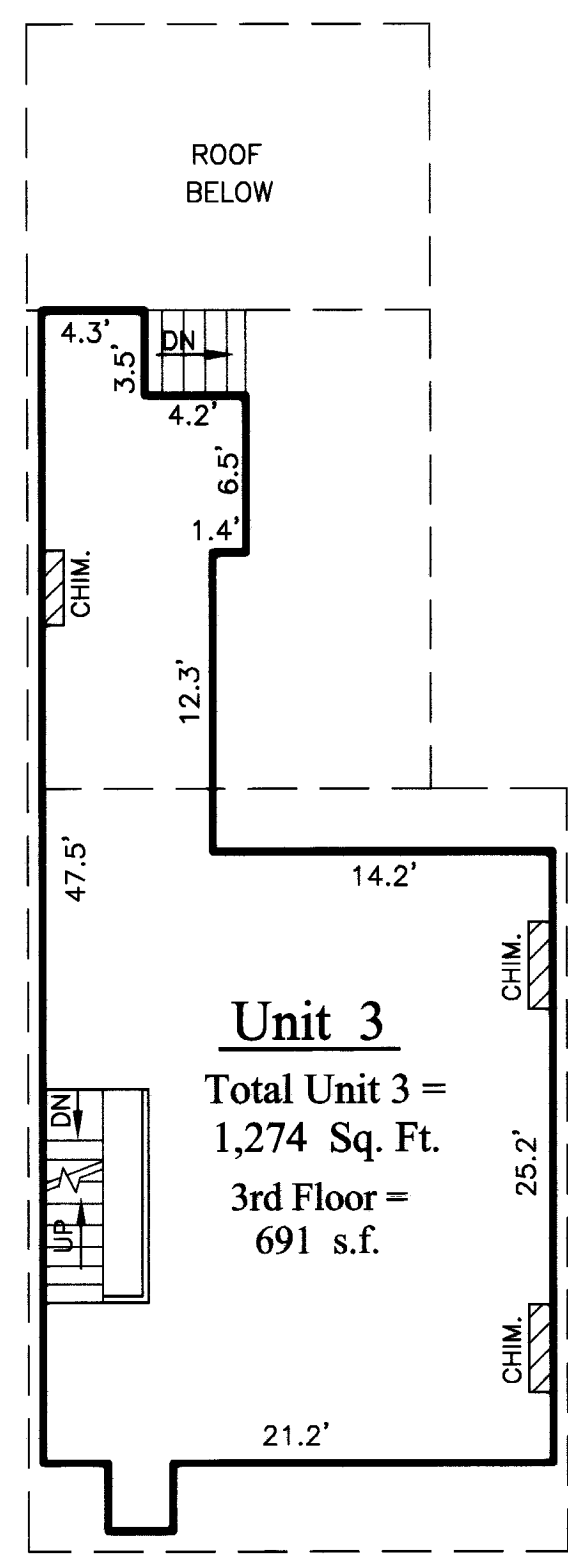


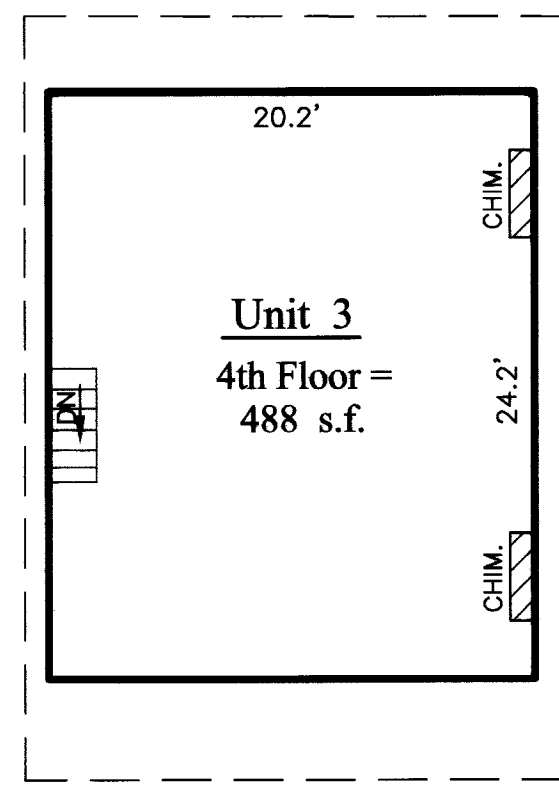
FIRST FLOOR



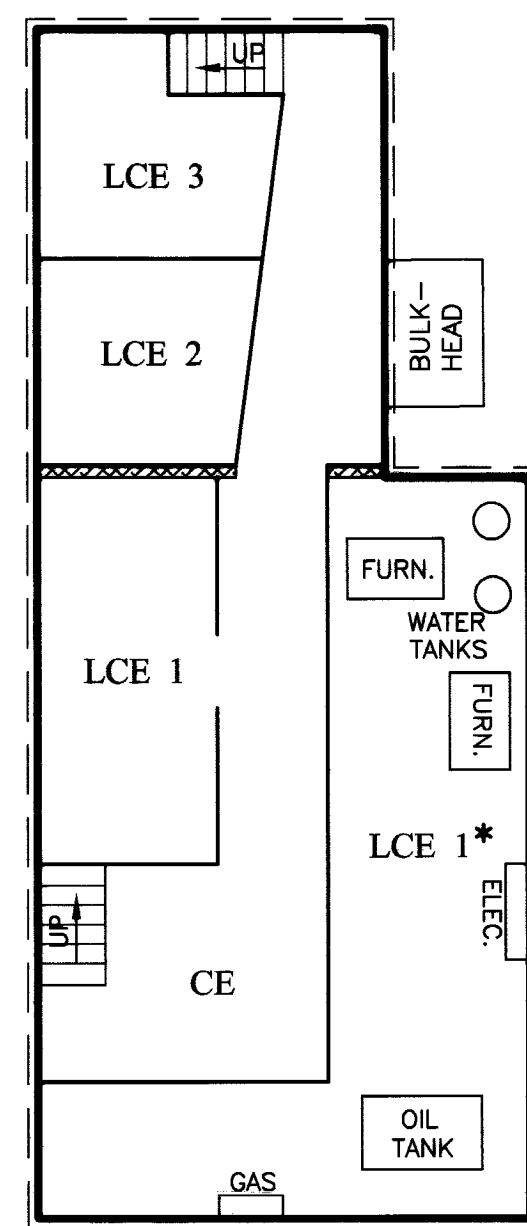
SECOND FLOOR



THIRD FLOOR

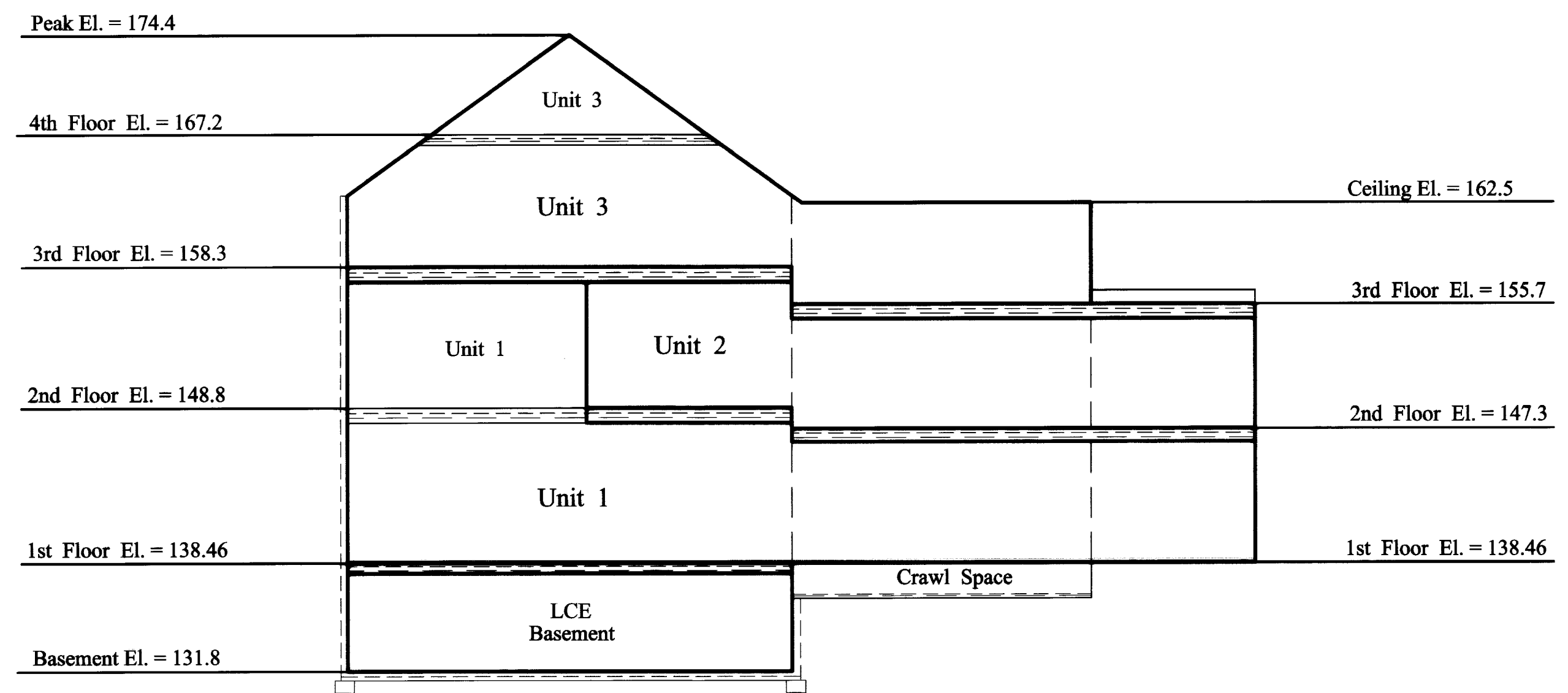


VERTICAL BOUNDARY



BASEMENT

*Subject to Utility Access



SECTION A
HORIZONTAL BOUNDARY

NOTE: ELEVATIONS BASED ON CITY DATUM

← WINTER STREET →

← WINTER STREET →

LEGEND:

- CE COMMON ELEMENT
- LCE LIMITED COMMON ELEMENT
- UNIT BOUNDARY

STATE OF MAINE
WILLIAM C. SHIPPEN, PLS #2118
PROFESSIONAL LAND SURVEYOR
DATE: 9-15-05

State of Maine, Cumberland SS.
Registry of Deeds
Received 8/24/05
at 2:05 p.m. and recorded in
Plan Book 205, page 587
Attest: John B. O'Brien
Register

HORIZONTAL & VERTICAL BOUNDARIES
"88 WINTER STREET CONDOMINIUM"
#88 WINTER STREET, PORTLAND, MAINE
MADE FOR RECORD OWNER
88 WINTER STREET DEVELOPMENT, LLC
88 WINTER STREET, UNIT 1, PORTLAND, MAINE

OWEN HASKELL, INC.
16 CASCO ST., PORTLAND, ME 04101 (207) 774-0424
PROFESSIONAL LAND SURVEYORS

Drwn By	EB	Date	AUGUST 30, 2005	Job No.	2005-027P
Trace By	JLW	Scale	1/8" = 1'	Drwg. No.	2 OF 2
Check By	WCS	Book No.	FILE		