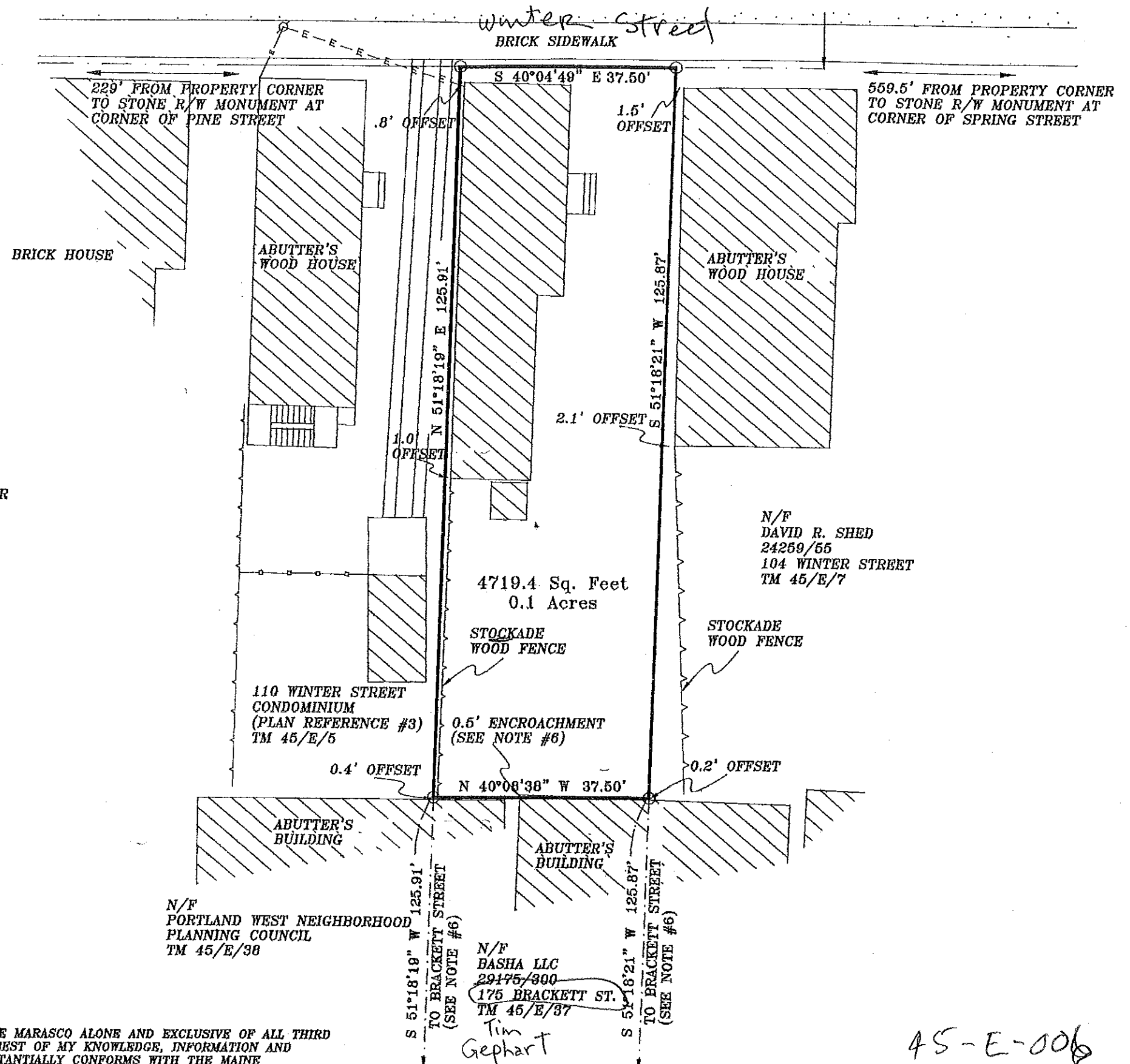


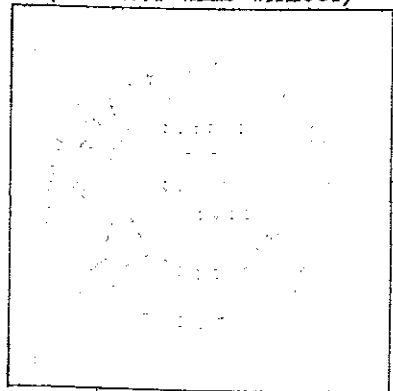
1" = 20'

LEGEND

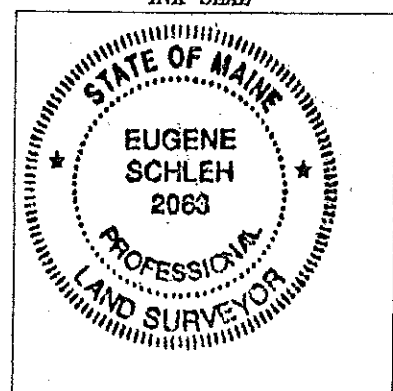
- IRON ROD TO BE SET WITH CAP (PLS 2063)
- GRANITE MONUMENT FOUND
- ⊙ WATER VALVE
- ⊙ GAS VALVE
- ⊙ UTILITY POLE
- N/F NOW OR FORMERLY OF
- 12345/67 CUMBERLAND COUNTY REGISTRY OF DEEDS BOOK/PAGE NUMBER
- TM 45/E/7 TAX MAP/BLOCK/LOT NUMBER
- SURVEYED PROPERTY LINE
- APPROXIMATE PROPERTY LINE
- - - - - OVERHEAD UTILITY LINE
- BITUMINOUS PAVEMENT
- ▨ EXISTING BUILDINGS



EMBOSSSED SEAL
(PLAN NOT VALID WITHOUT)



INK SEAL



I HEREBY STATE TO ROSE MARASCO ALONE AND EXCLUSIVE OF ALL THIRD PARTIES, THAT TO THE BEST OF MY KNOWLEDGE, INFORMATION AND BELIEF, THIS PLAN SUBSTANTIALLY CONFORMS WITH THE MAINE BOARD OF LICENSURE FOR PROFESSIONAL LAND SURVEYORS RULES EFFECTIVE APRIL 1, 2001

[Signature]

GENE SCHLEH PLS 2063

45-E-006
Legal 2 Fam. 05-112

bl
4)
st
ar
in
5)
lo
su
Wc
6)
ch
re
ap
95
ab
an
oc
ap
th
de
be
as
po.
of
co
ple
wil
7)
pe
da
8)
9)
res
10,
ap
dis
sh
exc
11)
fee
an
12)
res
cla.

PL

1)
OC
RE
2)
PO
INC
3)
200
CUL
PAC