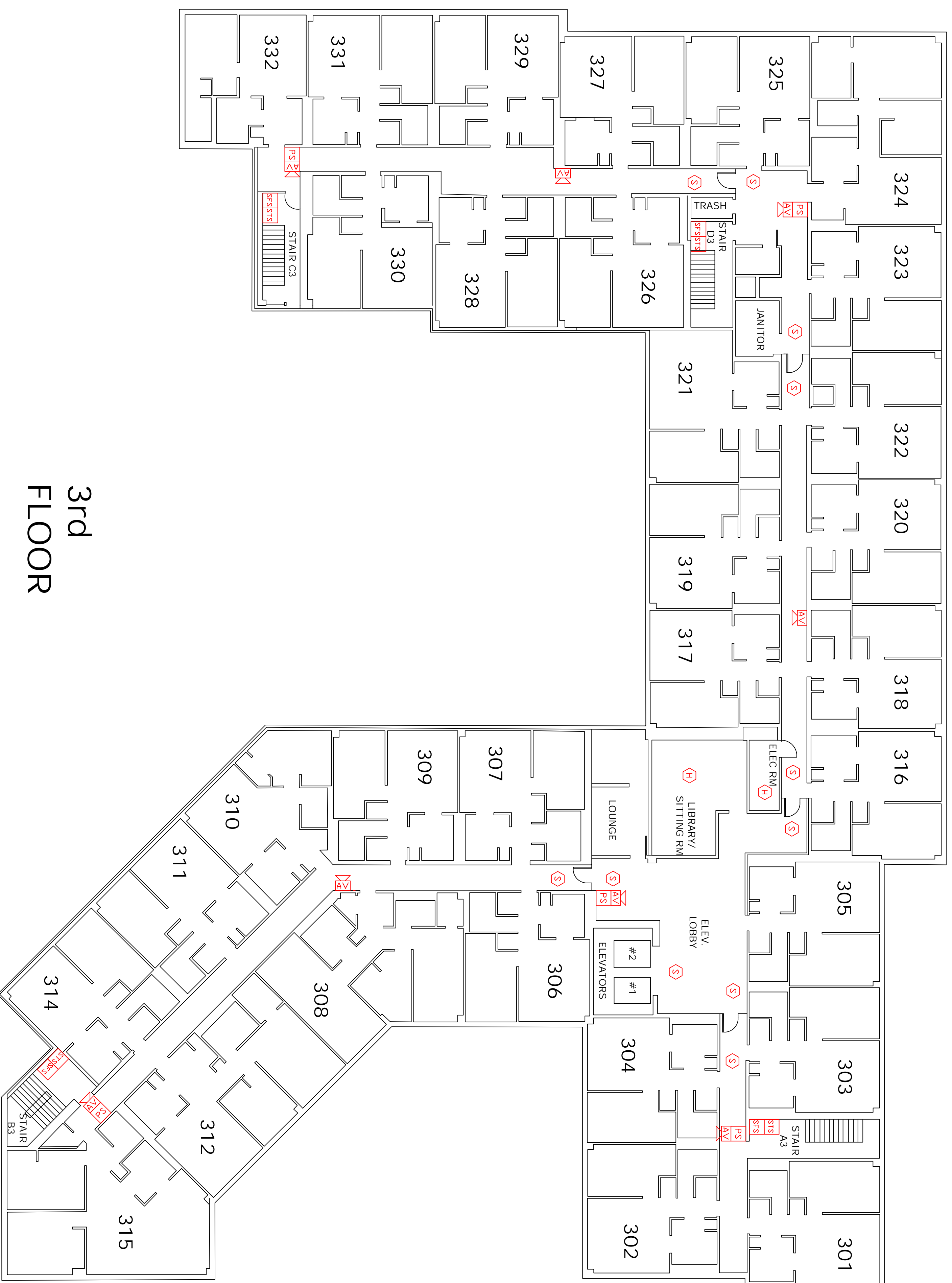
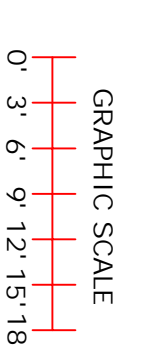


Important! Wiring connections must have correct polarity.



3rd FLOOR



Important! Duplicate Addresses on devices of different style is NDI an error in design or printing. All electronic devices MUST be placed in a heated room with temperature above 32 degrees

LEGEND

- PS PULL STATION
- S SMOKE DETECTOR
- H HEAT DETECTOR
- RT REMOTE TEST/INDICATOR
- DS DUCT SMOKE DETECTOR W/ FSP-85IR HEAD
- VD VISUAL ONLY
- AV AUDIO / VISUAL
- DSM DUAL SYNC MODULE
- ISD ISOLATION MODULE
- FMN MONITOR MODULE
- FRM RELAY MODULE
- STS SPRINKLER TAMPER
- SFS SPRINKLER FLDW

This drawing is an accurate layout from provided floor plans and information available at time of design. Circuiting has been designed for maximum use of resources available with supplied equipment. Deviations from this design must be noted and approved prior to final acceptance. Note: Signal Circuit 1 has a 2.5 amp load limitation, Circuits 2-3-4 have a combined load limitation of 2.5 amps. REMOTE power supply has a 3.0 amp limitation per circuit and an 8.0 amp combined limitation for all 4 circuits. Changes in circuiting must incorporate equipment specifications/limitations (see chart below for current vs. candle rating. Distances and ratings shown are for wall applications ONLY, call Norris, Inc. for ceiling devices when applicable.) Twisted-Shielded Cable is NDI recommended for use on SLC wiring for this panel. Untwisted cable inside/outside conduit has a 1000' max distance sizes 12-18AWG.

Room Size	Candle Rating	Load (amps)
20' x 20'	15 cd	0.08 amps
28' x 28'	30 cd	0.10 amps
45' x 45'	75 cd	0.15 amps
54' x 54'	110 cd	0.20 amps

- 4.7K END OF LINE RESISTOR (Panel Circuits)
- A 1 PR #12 AWG TWISTED PAIR CABLE(Up to 10,000 ft)
- A 1 PR #14 AWG TWISTED PAIR CABLE(Up to 8,000 ft)
- A 1 PR #16 AWG TWISTED PAIR CABLE(Up to 4,500 ft)
- B 1 PR #12 AWG FPL CABLE
- D 1 PR #14 AWG FPL CABLE
- E 1 PR #16 AWG FPL CABLE
- F 2C #12 AWG CABLE
- G 2C #14 AWG CABLE
- H 2C #16 AWG CABLE
- K 1 CAT5 CABLE
- L 1 PR #16 AWG TWISTED SHIELDED CABLE

REVISION	DATE
REVISION 2	DATE:
REVISION 1	DATE:
REVISION 0 SUBMITTAL	DATE: 5/24/2013

SYSTEM WIRING RISER

PROJECT NAME
100 State Street (3rd FI)

PORTLAND, MAINE

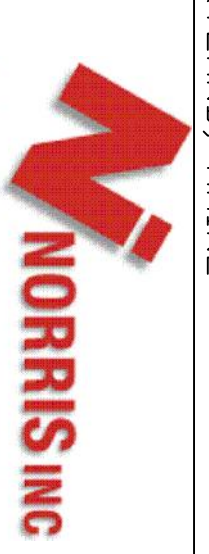
SCALE Graphic

BY: CIC

CK BY:

SAVED AS:

2257 BROOKWAY, SO PORTLAND, MAINE



Prepared For Tomorrow. Delivered Today