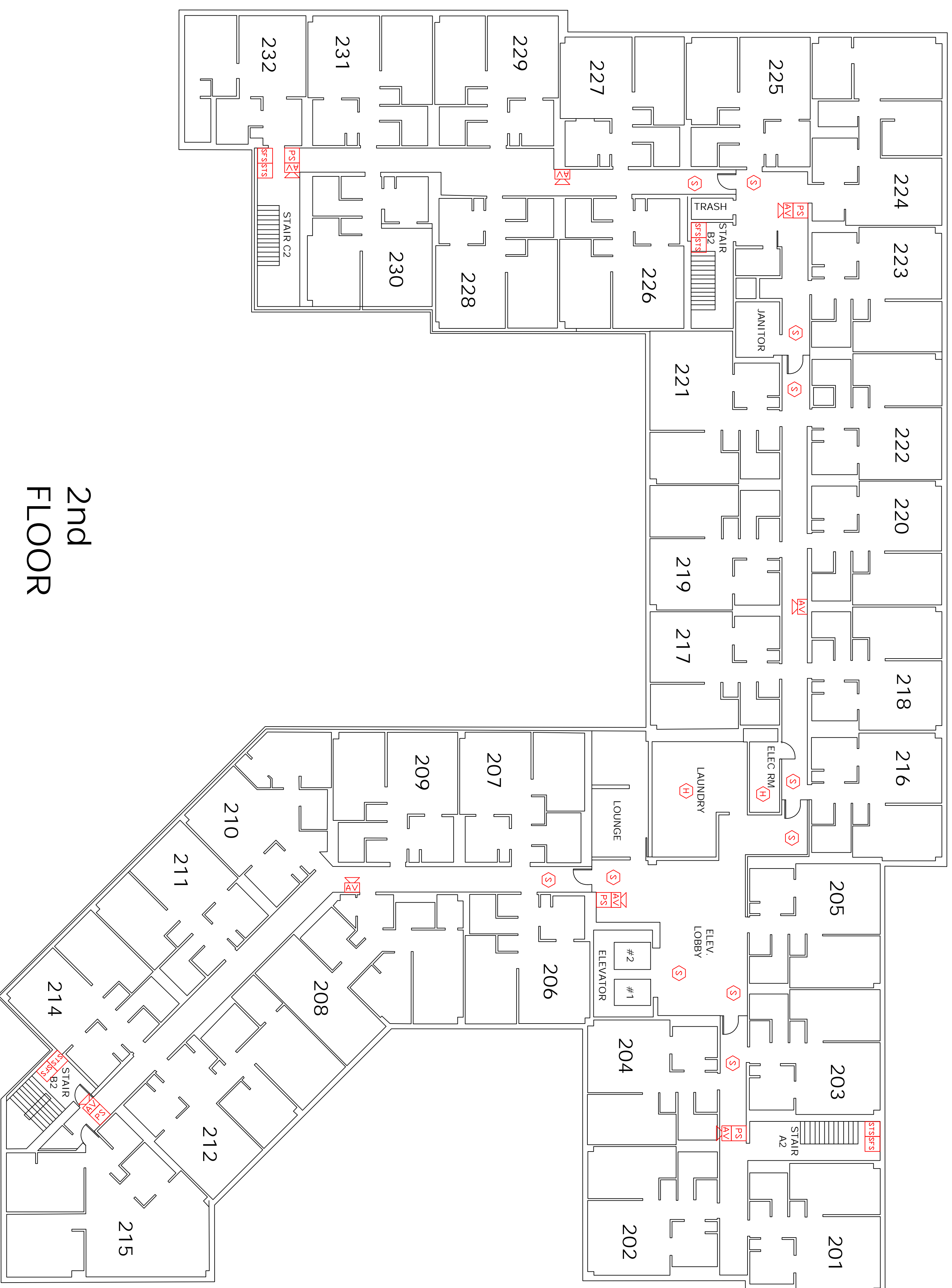
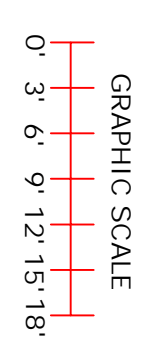


Important! Wiring connections must have correct polarity.



## 2nd FLOOR



### LEGEND

- PS PULL STATION
- S SMOKE DETECTOR
- H HEAT DETECTOR
- RT REMOTE TEST/INDICATOR
- DS DUCT SMOKE DETECTOR
- W/ FSP-851R HEAD
- VD VISUAL ONLY
- AV AUDIO / VISUAL
- DSM DUAL SYNC MODULE
- ISD ISOLATION MODULE
- FMN MONITOR MODULE
- FRM RELAY MODULE
- STS SPRINKLER TAMPER
- SFS SPRINKLER FLOW

This drawing is an accurate layout from provided floor plans and information available at time of design. Circuiting has been designed for maximum use of resources available with supplied equipment. Deviations from this design must be noted and approved prior to final acceptance. Note: Signal Circuit 1 has a 2.5 amp load limitation, Circuits 2-3-4 have a combined load limitation of 2.5 amps. REMOTE power supply has a 3.0 amp limitation per circuit and an 8.0 amp combined limitation for all 4 circuits. Changes in circuiting must incorporate equipment specifications/limitations (see chart below for current vs. candle rating. Distances and ratings shown are for wall applications ONLY, call Norris, Inc. for ceiling devices when applicable.) Twisted-Shielded Cable is NDI recommended for use on SLC wiring for this panel. Untwisted cable inside/outside conduit has a 100' max distance sizes 12-18AWG.

Room Size	Candle Rating	Load (amps)
20' x 20'	15 cd	0.08 amps
28' x 28'	30 cd	0.10 amps
45' x 45'	75 cd	0.15 amps
54' x 54'	110 cd	0.20 amps

- 4.7K END OF LINE RESISTOR (Panel Circuits)
- A 1 PR #12 AWG TWISTED PAIR CABLE(Up to 10,000 ft)
- A 1 PR #14 AWG TWISTED PAIR CABLE(Up to 8,000 ft)
- A 1 PR #16 AWG TWISTED PAIR CABLE(Up to 4,500 ft)
- B 1 PR #12 AWG FPL CABLE
- D 1 PR #14 AWG FPL CABLE
- E 1 PR #16 AWG FPL CABLE
- F 2C #12 AWG CABLE
- G 2C #14 AWG CABLE
- H 2C #16 AWG CABLE
- K 1 CAT5 CABLE
- L 1 PR #16 AWG TWISTED SHIELDED CABLE

REVISION	DATE
REVISION 2	DATE:
REVISION 1	DATE:
REVISION 0	DATE: 5/24/2013

SYSTEM WIRING RISER

PROJECT NAME  
**100 State Street (2nd Fl)**  
PORTLAND, MAINE

SCALE Graphic  
BY: CIC  
CK BY:

SAVED AS:  
**NORRIS INC**  
Prepared For Tomorrow, Delivered Today  
2257 BROOKWAY, SO PORTLAND, MAINE

Important! Duplicate Addresses on devices of different style is NDI an error in design or printing. All electronic devices MUST be placed in a heated room with temperature above 32 degrees