

General - (Typical all Rooms unless noted otherwise):

- Remove wall mounted items necessary for painting walls.
- Selective demolition as required for installation of new mechanical, plumbing electrical devices.
- All existing doors, windows, sills, and curtain track assemblies are to be removed unless noted otherwise.
- Remove all existing room signage.
- Coordinate removed items to be salvaged with owner.
- Remove all existing window treatments.

Office - 5000

- Refer to general scope only.

Office - 5001

- Refer to general scope only.

Office - 5002

- Refer to general scope only.

Exam - 5003

- Remove/relocate casework and sink to new Exam 5008.
- Remove soap, hand gel, and paper towel dispensers.
- Remove mirror.
- Remove curtain tracks.

Closet - 5004

- Refer to general scope only.

Lab - 5005

- Remove door, frame and hardware
- Remove portion of wall for new door installation
- Remove built-in casework and sink. (new wall med. sink to be installed.)
- Remove coat rack.
- Remove glove dispenser.
- Remove and relocate sharps container
- Remove and relocate soap, paper towel, and hand gel dispensers.
- Remove brackets, standards and shelving. Refer to floor plans.

Storage - 5006A

- Remove portion of wall for new door installation.
- Remove brackets standards and shelving. Refer to floor plans.

Exam - 5006

- Remove damaged plaster at window. (water damage).

Exam - 5007

- Remove damaged plaster at window. (water damage).

Waiting - 5008

- Remove wall mounted TV, mounting bracket and associated wiring.
- Remove wall mounted brochure rack.
- Remove hand gel dispenser.
- Remove coat board.
- Remove damaged plaster at windows. (water damage).

Exam - 5009

- Remove carpet flooring and rubber base.
- Remove damaged plaster at windows. (water damage).

Exam - 5010

- Remove damaged plaster at windows. (water damage).
- Remove door frame and hardware (separating office 5012, infill)

Toilet - 5011

- Remove floor and wall tile complete.
- Remove toilet and sink.
- Remove mirror, soap dispenser, paper towel dispenser, and toilet paper dispenser.

Office - 5012

- Remove damaged plaster at windows. (water damage).

Exam - 5013

- Remove damaged plaster at windows. (water damage).

Exam - 5014

- Remove wall partitions per attached floor plans.
- Remove door, frame and hardware.
- Remove light box.
- Remove sharps container.
- Remove coat rack.
- Remove mirror.
- Remove custom wooden shelf.
- Remove soap, paper towel and hand gel dispensers.
- Remove/relocate built-in casework and sink to new Exam 5018.

Exam - 5015

- Remove wall partitions per attached floor plans.
- Remove door, frame and hardware.

M/PTiles - 5016

- Remove wall partitions per attached floor plans.
- Remove door, frame and hardware.
- Remove built-in casework.
- Remove brackets, standards and shelving.
- Remove cork board.

Toilet - 5017A

- Remove end wall tile complete.
- Remove toilet and sink. (To be remain)
- Remove mirror, soap dispenser, paper towel dispenser, and toilet paper dispenser.

Exam - 5018

- Refer to general scope only.

Waiting - 5019

- Remove wall partitions per attached floor plans.
- Remove door, frame and hardware.
- Remove coat rack.
- Remove hand gel dispenser.
- Remove wall mounted brochure rack.
- Remove wall mounted sharps container.
- Remove portion of base curbing for installation of new door.

Patient Reg. - 5020

- Remove wall partition per attached floor plan.
- Remove door, frame and hardware.
- Remove coat rack.
- Remove hand gel dispenser.
- Remove coat board.
- Remove paste-thru window. (to be in-filled)

Rec/Off/med Rec. - 5021

- Remove portion of wall partitions per attached floor plans.
- Remove all built-in casework.
- Remove (2) roll-down automatic fire doors and all associated wiring.
- Remove brackets, standards and shelving. Refer to floor plan.

Medical Assistant - 5022

- Remove wall partitions per attached floor plans.
- Remove door frame and hardware.
- Remove brackets, standards and shelving.
- Remove coat hooks.
- Remove paste-thru window. (to be in-filled).

Toilet/Data - 5023

- Existing to remain.

Storage - 5024

- Refer to general scope only.

Toilet - 5025

- Remove floor and wall tile complete.
- Remove toilet and sink.
- Remove mirror, soap dispenser, paper towel dispenser, and toilet paper dispenser.

Exam - 5026

- Remove carpet flooring and rubber base.

Exam - 5026

- Remove carpet flooring and rubber base.

Toilet - 5027

- Remove floor mtid. toilet fixture. Cap plumbing in wall and below floor slab.
- Remove wall hung sink. Cap plumbing in wall.
- Remove soap, toilet paper, paper towel, and seat liner dispensers.
- Remove toilet grab bars. (36" and 42")
- Remove mirror.

Staff Toilet - 5028

- Refer to general notes.
- Existing flooring to remain.

Corridor - 5029

- Remove curbing at waiting 5019. Coordinate with new floor plan for extents.
- Remove portion of wall for new door installation.
- Remove sink, faucet and associated piping. (coord. with new door location)
- Remove vinyl wall covering and prep walls for painting.

HSPK - 5029A

- Existing to remain.

Corridor - 5029B

- Remove vinyl wall covering and prep for painting.

Corridor - 5029C

- Remove vinyl wall covering and prep for painting.

Toilet - 5030

- Remove wall partitions per attached floor plans.
- Remove door, frame and hardware.
- Remove toilet fixture.

Toilet - 5031

- Remove wall partitions per attached floor plans.
- Remove toilet fixture.
- Remove wall mounted sink.
- Remove stall shower.
- Remove paper towel dispenser, paper and paper towel dispensers.
- Remove grab bars.

Reading - 5032

- Remove wall partitions per attached floor plans.
- Remove door, frame and hardware.

Office - 5033

- Remove damaged plaster at windows. (water damage).
- Remove interior window. (infill wall partition)

Echo - 5034

- Remove wall partitions per attached floor plans.
- Remove portion of existing interior wall for viewing window installation.
- Remove door frame and hardware.
- Remove curtain track.
- Remove sharps container.
- Remove hand gel dispenser.
- Remove built-in casework.

Reception - 5035

- Remove wall partitions per attached floor plans.
- Remove door, frame and hardware.
- Remove built-in casework.

Waiting - 5036

- Remove wall partitions per attached floor plans.

Office - 5037

- Remove wall partitions per attached floor plans.
- Remove door, frame and hardware.
- Remove brackets, standards and shelving.

Stress - 5038

- Remove wall partitions per attached floor plans
- Remove door, frame and hardware.
- Remove brackets, standards and shelving.
- Remove built-in casework.
- Remove sharps container.
- Remove cork board.

Files - 5039

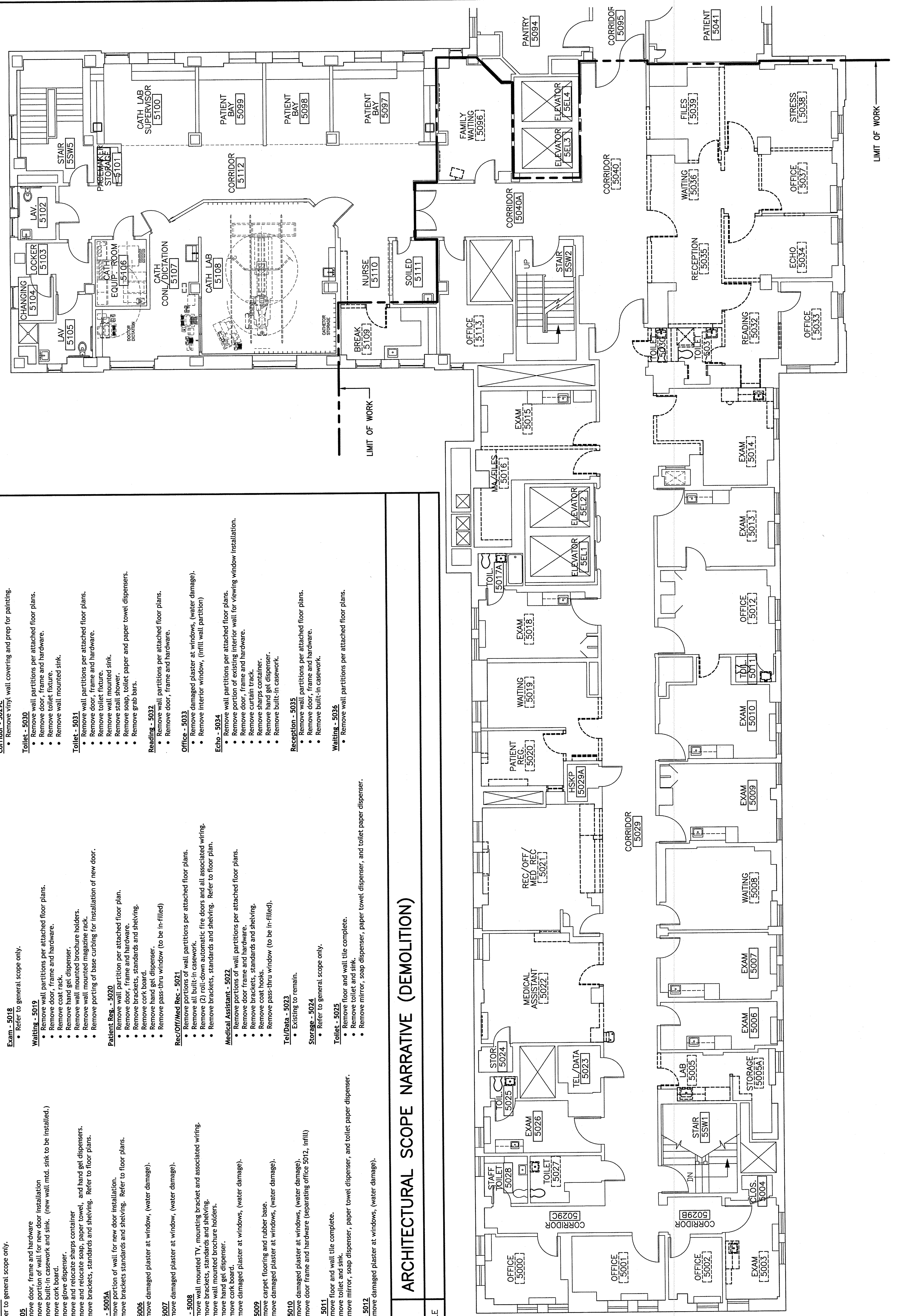
- Remove wall partitions per attached floor plans.
- Remove door, frame and hardware.

Corridor - 5040

- Wall partition removal at Files 5039 and Reception 5035.

GENERAL DEMOLITION NOTES:

1. COORDINATE EXTENT OF DEMOLITION WITH LOCATIONS OF PARTITIONS DESCRIBED ON PLANS AND WITH LOCATIONS OF FINISHES NOTED AS EXISTING TO REMAIN.
2. ANY WALL, PARTITION OR SURFACE DISTURBED BECAUSE OF NEW WORK OR DEMOLITION SHALL BE PATCHED AND FINISHED CONTIGUOUSLY TO THE NEAREST CORNER UNLESS NOTED OTHERWISE. MATCH EXISTING ADJACENT CONSTRUCTION FINISHES, CONTINUITY AND FIRE RATINGS UNLESS NOTED OTHERWISE.
3. PROTECT ALL FINISHES, MATERIALS AND EQUIPMENT NOTED AS EXISTING TO REMAIN. CONTRACTOR SHALL BE RESPONSIBLE TO REPLACE ALL FINISHES, MATERIALS AND EQUIPMENT DAMAGED DURING CONSTRUCTION.
4. COORDINATE ADDITIONAL DEMOLITION WITH MECHANICAL, ELECTRICAL AND PLUMBING SCOPE OF WORK.



F1 ARCHITECTURAL SCOPE NARRATIVE (DEMOLITION)

NOT TO SCALE

A1 DEMOLITION PLAN

1/8" = 1'-0"

16 15 14 13 12 11 10 9 8 7 6 5 4 3 2 1

16 15 14 13 12 11 10 9 8 7 6 5 4 3 2 1

144 Fore Street, P.O. Box 618
 Portland, Maine 04104
 TEL: (207) 772-2846
 FAX: (207) 772-1070
 WWW: smrtinc.com

ARCHITECTURE
 ENGINEERING
 PLANNING
 INTERIOR DESIGN
 COMMISSIONING

SMRT

PROJECT NORTH

44 April 11

ISSUED FOR PERMITTING
 4-4-11

PORTLAND, MAINE
MERCY HOSPITAL
 5TH FLOOR CARDIOLOGY RENOVATIONS

CURRENT ISSUE STATUS:

REV	DESCRIPTION	DATE

GRAPHIC SCALE:
 0" = 1' 8" = 1'-0"

PROJECT MANAGER: CDP
 LC/DRAWN BY: CAH
 A/E OF RECORD: CDP
 CAD FILE: A0101-10120
 PROJECT NO: 10120-00
 DATE: 10/20/00
 SHEET TITLE:

PARTIAL 5TH FLOOR DEMOLITION PLAN AND NARRATIVE

SHEET No. **AD101**

PROGRESS PRINT