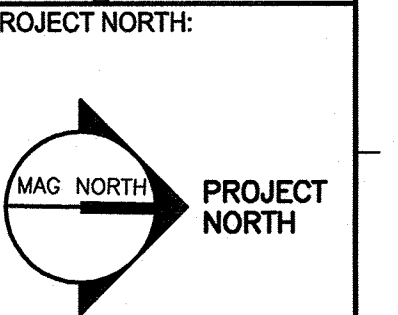
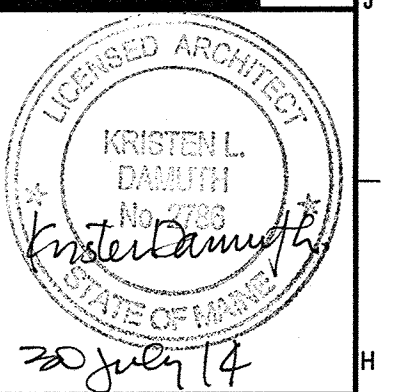
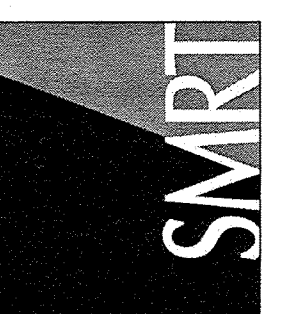


MERCY HOSPITAL

STATE ST. - 3 SOUTH RENOVATIONS

PORTLAND, MAINE

144 Fore Street, P.O. Box 618
Portland, Maine 04104
Tel: (207) 773-3846
Fax: (207) 773-1070
www.smartinc.com



PROJECT NORTH:

**MERCY HOSPITAL
3S PULMONARY RENOVATIONS**
STATE STREET - PORTLAND, MAINE

**ISSUED FOR CONSTRUCTION
7-30-14**

CURRENT ISSUE STATUS:

REV	DESCRIPTION	DATE
0	ISSUED FOR CONSTRUCTION	7-30-14

GRAPHIC SCALE:



SCALE: 1/4"=1'-0"
PROJECT MANAGER: KD
JC/DRAWN BY: MDR / MDR
A/E OF RECORD: KD
PROJECT NO: 14087
SMART FILE: G1001-14087
DATE: 7-30-14

SHEET TITLE:
COVER SHEET

SHEET No.
G1001

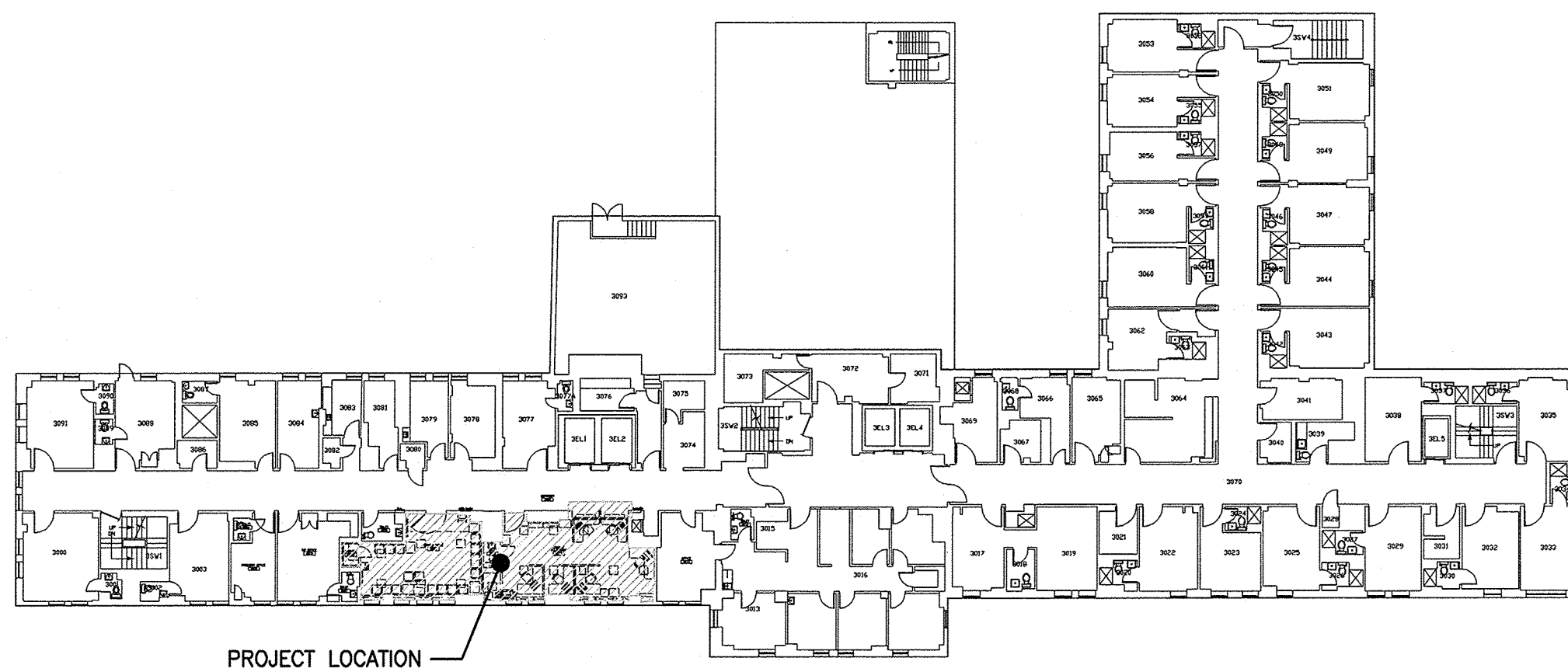
© COPYRIGHT 2014 SMART INC.

A/C	AIR CONDITIONING	N	NOSING
ACPLAS	ACOUSTICAL PLASTER	NIC	NOT IN CONTRACT
ACT	ACOUSTIC CEILING TILE	NS	NEAR SIDE
AFF	ABOVE FINISHED FLOOR	NTS	NOT TO SCALE
AP	ACCESS PANEL	OC	ON CENTER
BCE	BOTTOM CHORD EXTENSION	OF	OUTSIDE FACE
BD	BOARD	OH	OVERHEAD
BLP	BORROWED LIGHT PANEL	PA	PUBLIC ADDRESS
BO	BOTTOM OF	PAF	POWDER-ACTUATED FASTENER
BOF	BOTTOM OF FOOTING	PL	PLATE
BOS	BOTTOM OF STEEL	PLAM	PLASTIC LAMINATE
BS	BOTH SIDES	PLF	POUNDS PER LINEAR FOOT
BSE	BSBRICK SHELF ELEVATION	PP	POWER PANEL
C	CHANNEL	PSF	POUNDS PER SQUARE FOOT
CB	CATCH BASIN; CHALKBOARD	PSI	POUNDS PER SQUARE INCH
CFM	CUBIC FEET PER MINUTE	PT	PRESSURE-TREATED
CJ	CONTROL JOINT; CONSTRUCTION JOINT	PVC	POLYVINYL CHLORIDE
CLG	CEILING	PWP	PLASCORE WALL PANEL
CMU	CONCRETE MASONRY UNIT	R	RISER; RADIUS
CTU	CERAMIC TILE	RB	RESILIENT BASE
CUH	CABINET UNIT HEATER	RD	ROOF DRAIN
DF	DRINKING FOUNTAIN	RO	ROUGH OPENING
DR	DISPLAY RAIL	RR	RUB-RAIL
DW	DISHWASHER	ACT	SUSPENDED ACOUSTIC TILE CEILING
EF	EXHAUST FAN; EACH FACE	SBO	SUPPLIED BY OWNER
EJ	EXPANSION JOINT	IBC	INSTALLED BY CONTRACTOR
EPDM	ETHYLENE PROPYLENE DIENE MONOMER	SC	SOLID CORE
EW	EACH WAY	SCHD	SCHEDULE
EWC	ELECTRIC WATER COOLER	SF	SQUARE FOOT; SUPPLY FAN
FB	FLAT BAR	SK	SHEAR KEY
FBO	FURNISHED BY OTHERS	SN	SANITARY NAPKIN (DISPENSER)
FCO	FLOOR CLEAN-OUT	SP	SPACES
FD	FLOOR DRAIN	SS	STAINLESS STEEL
FE	FIRE EXTINGUISHER	T	TREAD
FF	FINISHED FLOOR; FAR FACE	TB	TACKBOARD
FO	FRAMED OPENING	T&B	TOP AND BOTTOM
FS	FAR SIDE	TBM	TEMPORARY BENCHMARK
GB	GRAB BAR	TCE	TOP CHORD EXTENSION
GC	GENERAL CONTRACTOR	TJ	TIE JOIST
GDT	GYPSPUM DROP-IN TILE	TO	TOP OF
GWB	GYPSPUM WALL BOARD	TOC	TOP OF CONCRETE
H	HORIZONTAL	TOF	TOP OF FOOTING
HC	HANDICAPPED; HOLLOW CORE	TOM	TOP OF MASONRY
HM	HOLLOW METAL	TOP	TOP OF PIER
HRU	HEAT RECOVERY UNIT	TOS	TOP OF STEEL; TOP OF SLAB
HT	HEIGHT	TOW	TOP OF WALL
H&V	HEATING AND VENTILATING	TP	TOILET PAPER (DISPENSER)
HVAC	HEATING, VENTILATING AND AIR CONDITIONING	TS	
IF	INSIDE FACE	UH	UNIT HEATER
IJ	ISOLATION JOINT	UNO	UNLESS NOTED OTHERWISE
INV	INVERT	V	VENT PIPE; VERTICAL
JS	JOIST SUBSTITUTE	VB	VAPOR BARRIER
L	ANGLE	VCT	VINYL COMPOSITION TILE
LLH	LONG LEG HORIZONTAL	VP	VISION PANEL
LLV	LONG LEG VERTICAL	VTR	VENT THROUGH THE ROOF
LP	LIGHTING PANEL; LIQUIFIED PROPANE	W/	WITH
MB	MARKER BOARD	WC	WATER CLOSET
MDO	MEDIUM DENSITY OVERLAY	WF	WIDE FLANGE
MO	MASONRY OPENING	WH	WATER HEATER
MR	MOISTURE-RESISTANT	W/O	WITHOUT
MUA	MAKE-UP AIR	WP	WALL PROTECTION
		WS	WEB STIFFENER
		WWF	WELDED WIRE FABRIC

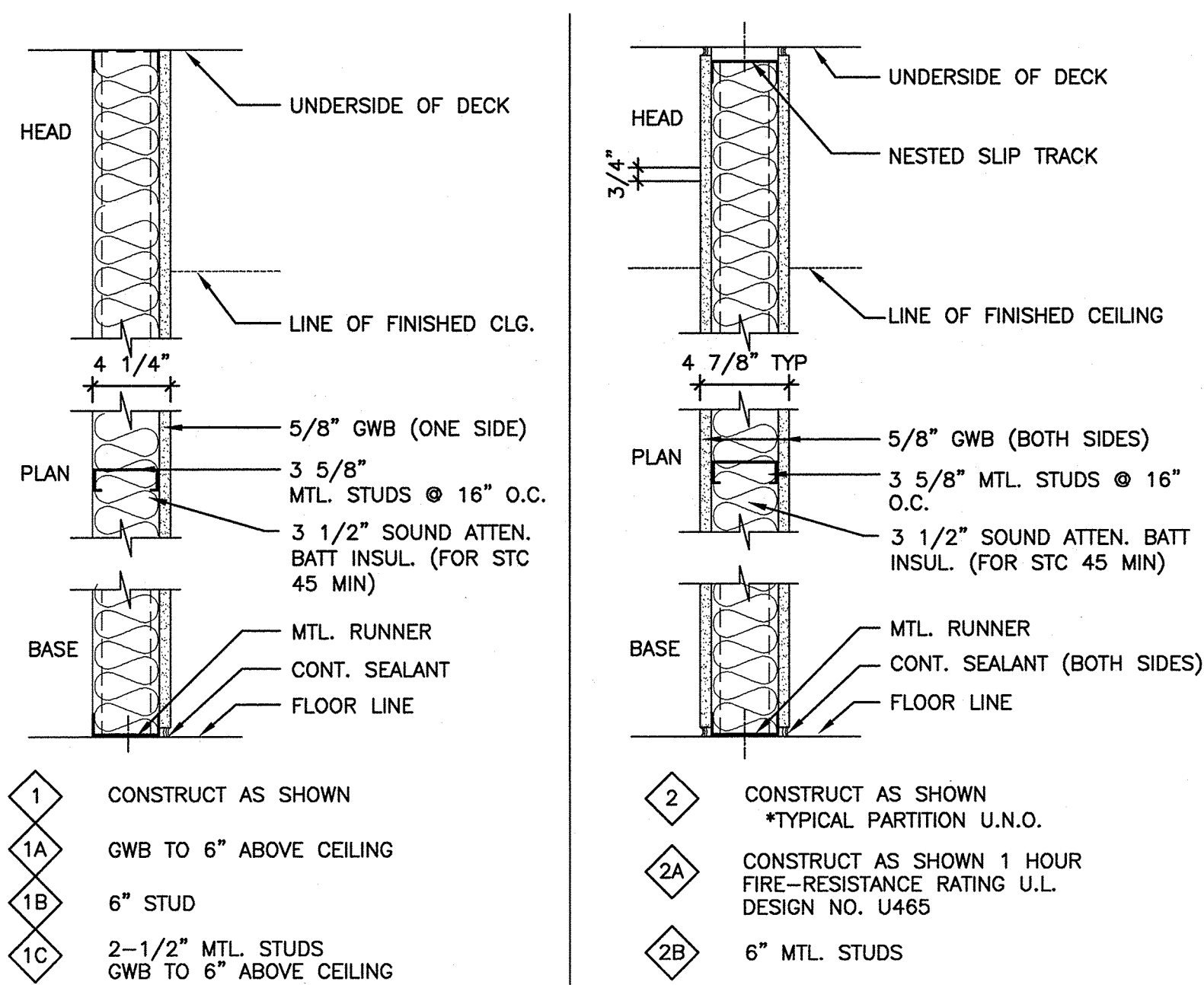
GRID LOCATION	TITLE
SCALE	REFERENCE SHEET
	DRAWING TITLE BLOCK

- BUILDING SECTION
- WALL SECTION
- DETAIL
- LEVEL LINE
- REVISION
- WINDOW TYPE
- DOOR NUMBER
- LOBBY ROOM NAME
 ROOM NUMBER
- INTERIOR ELEVATION
- WALL TYPE
- BACKER ROD AND SEALANT
- EXTERIOR ELEVATION

PROJECT LOCATION - 3RD FLOOR



PARTITION TYPES



E EXISTING STUD WALL, PATCH AND REPAIR HOLES, CRACKS AND/OR ANY OTHER BLEMISH. PREPARE SUBSTRATE FOR SCHEDULED FINISH PER MANUFACTURERS WRITTEN RECOMMENDATIONS.

DRAWING LIST

- GENERAL**
- G1001 COVER SHEET
- ARCHITECTURAL**
- A-101 DEMOLITION PLAN AND FLOOR PLAN
 - A-102 RCP, INTERIOR ELEVATION AND DETAILS
- ELECTRICAL**
- E-001 LEGEND AND GENERAL NOTES
 - E-101 DEMOLITION AND LIGHTING PLANS
 - E-102 POWER AND SYSTEMS PLANS

PROJECT SUMMARY:

THIS PROJECT CONSISTS OF APPROXIMATELY 885 SQUARE FEET OF RENOVATION FOR PULMONARY ON THE THIRD FLOOR OF THE HOSPITAL. CONSISTS OF FINISH UPGRADES: FLOORING REPLACEMENT, CEILING/LIGHT REPLACEMENT AND NEW PAINT. RENOVATION ALSO INCLUDES REPLACEMENT OF CHECK IN TRANSACTION WINDOW, IMPROVING PATIENT CONFIDENTIALITY.

APPLICABLE CODES

- FIRE:** NFPA INCLUDING 101 LIFE SAFETY CODE, 2000 AND 2009 EDITION
- BUILDING:** IBC BUILDING CODE, 2009 EDITION
- ACCESSIBILITY:** ADA, ACCESSIBILITY GUIDELINES FOR BUILDINGS AND FACILITIES 2010 EDITION.
- MECHANICAL:** 2007 ASHRAE STANDARD 90.1
- PLUMBING:** 2009 MAINE STATE PLUMBING CODE
- ELECTRICAL:** 2008 NATIONAL ELECTRIC CODE

FLOOR PLAN NOTES:

- SEE GENERAL NOTES ON G1002.
- FURNITURE DASHED IN BY OTHERS IS INDICATED FOR COORDINATION. PROVIDE IN WALL BLOCKING FOR ALL WALL MOUNTED CASEWORK, FURNITURE, EQUIPMENT AND ANY OTHER NIC ITEM.
- PARTITION TYPE $\diamond E$ IS TYPICAL UNLESS NOTED OTHERWISE.
- REFER TO DETAILS AND/OR ENLARGED PLANS FOR ADDITIONAL INFORMATION.
- AT ALL REMOVED ITEMS, PATCH WALL SURFACE TO MATCH ADJACENT MATERIAL, TYPICAL.
- EXTERIOR DIMENSIONS ARE FROM FACE OF STUD TO FACE OF STUD. UNLESS NOTED OTHERWISE.

KEYED NOTES:

- PLAM SHELVES ON STANDARDS AND WALL BRACKETS
- EXISTING FURNITURE RELOCATED
- NEW FURNITURE
- WALL MOUNTED TV
- INFILL WALL WHERE EXISTING DOOR AND FRAME WAS REMOVED. INFILL WALL FLUSH ON BOTH SIDES WITH MATERIAL SIMILAR TO ADJACENT CONSTRUCTION.

FINISH SCHEDULE

ROOM NUMBER	ROOM NAME	FLOOR	BASE	WALLS				CEILING	
				NORTH	SOUTH	EAST	WEST	MATERIAL	HEIGHT
3009	WAITING ROOM	CPT	RB-1	PTD	PTD	PTD	PTD	ACT	EXIST
3009A	STORAGE	CPT	RB-1	PTD	PTD	PTD	PTD	ACT	EXIST
3010	TOILET	EXIST	EXIST	PTD	PTD	PTD	PTD	EXIST	EXIST
3011	CARDIO/PULMONARY	CPT	RB-1	PTD	PTD	PTD	PTD	ACT	EXIST
3092	CORRIDOR	EXISTING	EXISTING	EXIST	EXIST	PTD	EXIST	EXIST	EXIST

FINISH ABBREVIATIONS:

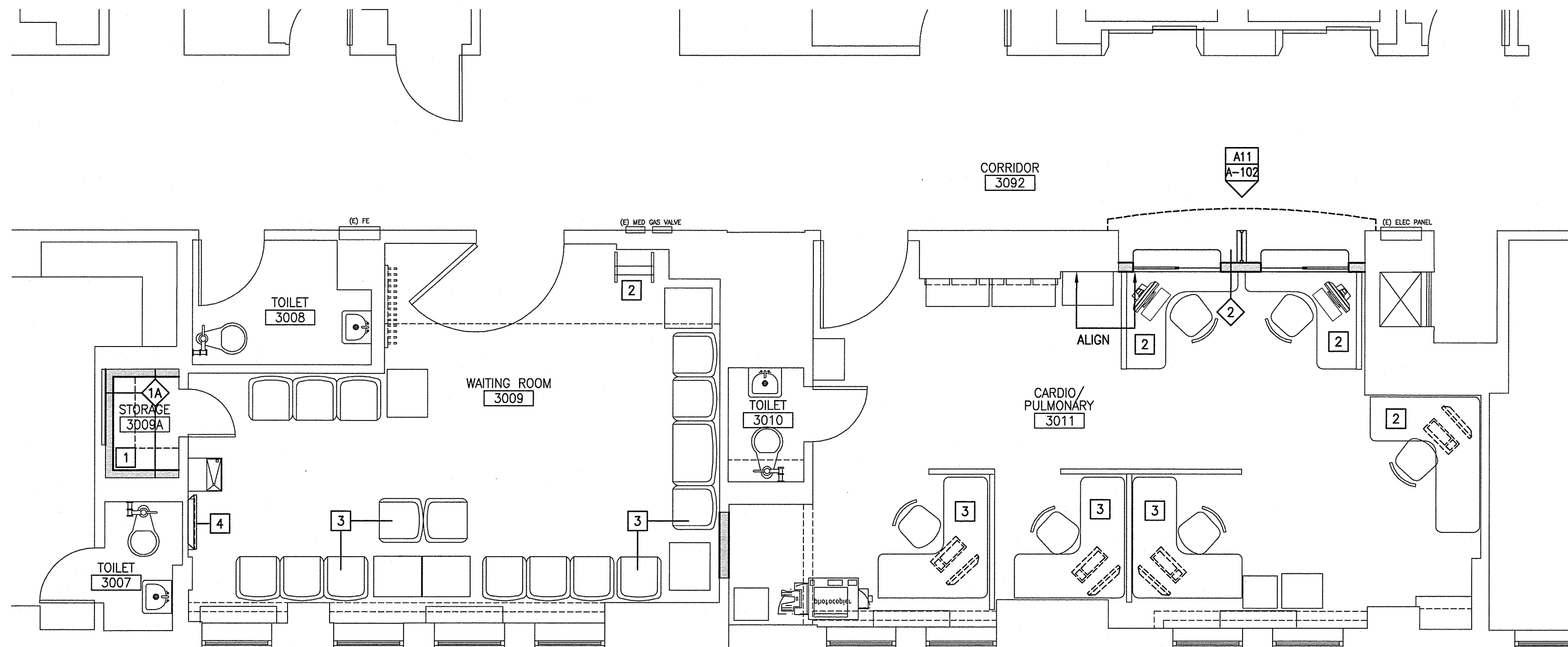
ACT	ACOUSTICAL CEILING TILE	PTD	PAINTED
CPT	CARPET	RB	RUBBER BASE
EXIST	EXISTING TO REMAIN	SSM	SOLID SURFACE MATERIAL
EXP	EXPOSED STRUCTURE	SV	SHEET VINYL FLOORING
GWB	GYPSUM WALLBOARD	VCT	VINYL COMPOSITION TILE
PLAM	PLASTIC LAMINATE	WD	WOOD

GENERAL DEMOLITION NOTES:

- COORDINATE EXTENT OF DEMOLITION WITH THE REQUIREMENTS OF OTHER WORK OF THIS CONTRACT AS DESCRIBED HERE IN AND IN THE CONTRACTORS SUBMITTALS, AND WITH LOCATIONS OF FINISHES NOTED AS EXISTING TO REMAIN.
- ANY WALL, PARTITION OR SURFACE DISTURBED BY WORK OF THIS CONTRACT SHALL BE PATCHED AND FINISHED CONTINUOUSLY TO THE NEAREST CORNER UNLESS NOTED OTHERWISE, MATCH EXISTING ADJACENT CONSTRUCTION FINISHES, CONTINUITY AND FIRE RATINGS UNLESS NOTED OTHERWISE.
- PROTECT ALL FINISHES, MATERIALS AND EQUIPMENT NOTED AS EXISTING TO REMAIN. CONTRACTOR SHALL BE RESPONSIBLE TO REPLACE ALL FINISHES, MATERIALS AND EQUIPMENT DAMAGED DURING CONSTRUCTION.
- DIMENSIONS INDICATED \pm ARE EXISTING CONDITION DIMENSIONS TO BE VERIFIED IN FIELD.
- OWNER IS RESPONSIBLE FOR THE REMOVAL AND RELOCATION OF EXISTING FURNITURE WITH IN SCOPE OF CONSTRUCTION.

DEMOLITION KEY NOTES:

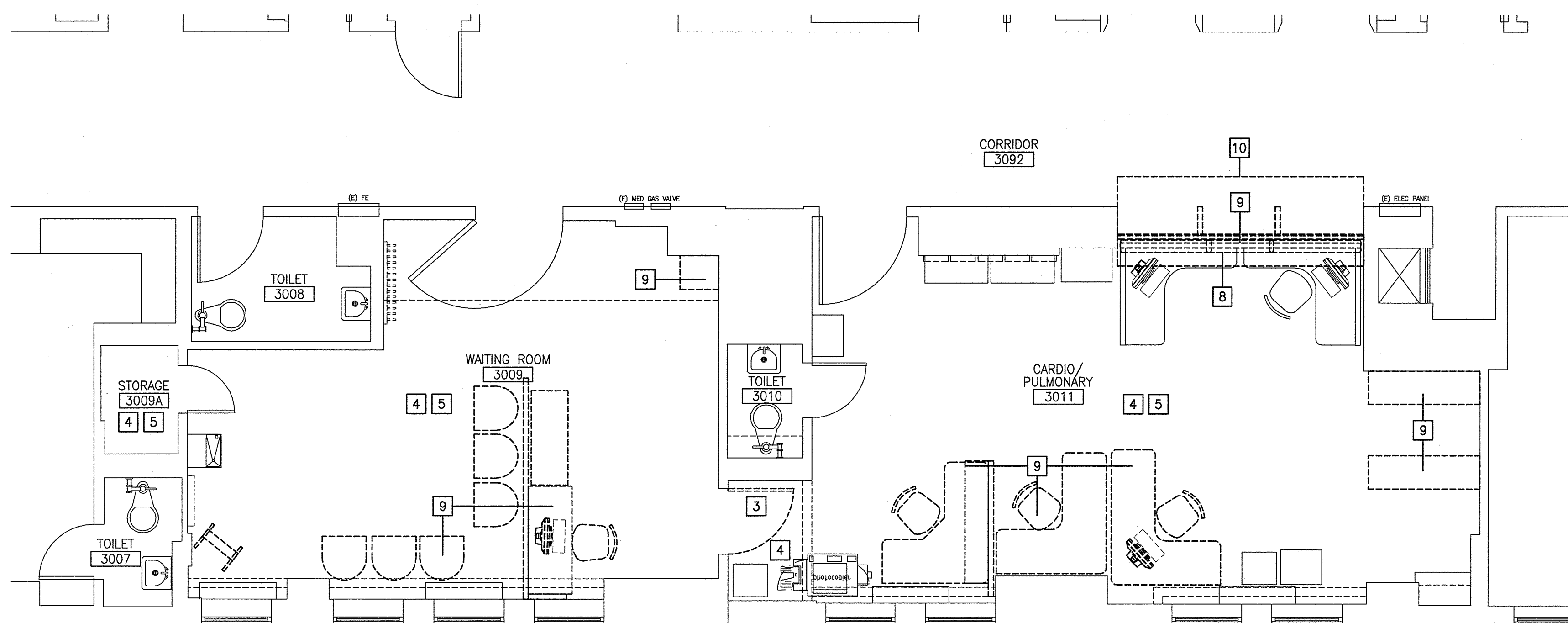
- NA
- NA
- REMOVE DOOR, FRAME AND HARDWARE ASSEMBLY COMPLETE. TURN OVER TO OWNER.
- REMOVE CEILING TILE AND GRID ASSEMBLY COMPLETE. COORDINATE EXTENTS OF REMOVAL WITH PARTITION LOCATIONS AND EXISTING FINISHES TO REMAIN.
- REMOVE FLOORING SYSTEM AND PREPARE SUBSTRATE FOR PROPOSED FLOORING. COORDINATE EXTENT WITH PROPOSED FINISH.
- NA
- NA
- REMOVE OVERHEAD COILING DOOR COMPLETE.
- REMOVE FURNITURE, RELOCATE FOR OWNER.
- REMOVE PORTION OF EXISTING CEILING TO ALLOW FOR INSTALLATION OF SOFFIT



F6 FLOOR PLAN

1/4"=1'-0"

*



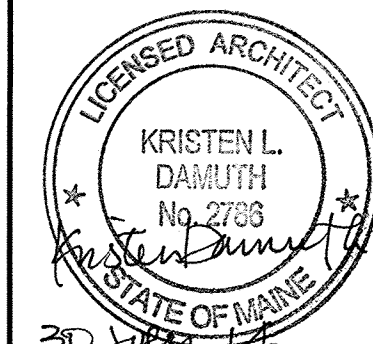
A6 DEMOLITION PLAN

1/4"=1'-0"

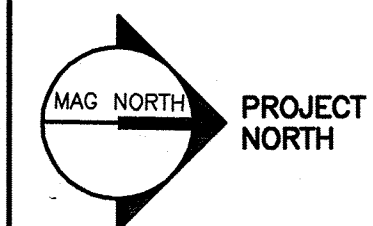
*

144 Fore Street, P.O. Box 818
Portland, Maine 04104
Tel: (207) 772-3946
Fax: (207) 772-1070
www.smartinc.com

ARCHITECTURE
ENGINEERING
PLANNING
INTERIORS
ENERGY



PROJECT NO: 14087



**MERCY HOSPITAL
3S PULMONARY RENOVATIONS**
STATE STREET - PORTLAND, MAINE

**ISSUED FOR CONSTRUCTION
7-30-14**

REV	DATE	DESCRIPTION
0	7-30-14	ISSUED FOR CONSTRUCTION

GRAPHIC SCALE:
0' 1'
SCALE: 1/4"=1'-0"
PROJECT MANAGER: KD
JC/DRAWN BY: MDR /MDR
A/E OF RECORD: KD
PROJECT NO: 14087
SMART FILE: A-101-14087
DATE: 7-30-14

SHEET TITLE:
**FLOOR AND
REFLECTED
CEILING PLANS**

SHEET No.
A-101

©COPYRIGHT 2014 SMART INC.

SYMBOL LEGEND

- 2x2 SUSPENDED CEILING PANEL AND GRID ASSEMBLY.
- 2x4 SUSPENDED CEILING PANEL AND GRID ASSEMBLY.
- GWB CEILING.
- 2x4 LAY-IN LIGHT FIXTURE.
- 1x4 PENDANT LIGHT FIXTURE.
- DOWN LIGHT.
- CEILING MOUNTED EXIT LIGHT.
- RETURN AIR GRILLE.
- SUPPLY AIR GRILLE.
- EXHAUST AIR GRILLE.

REFLECTED CEILING NOTES

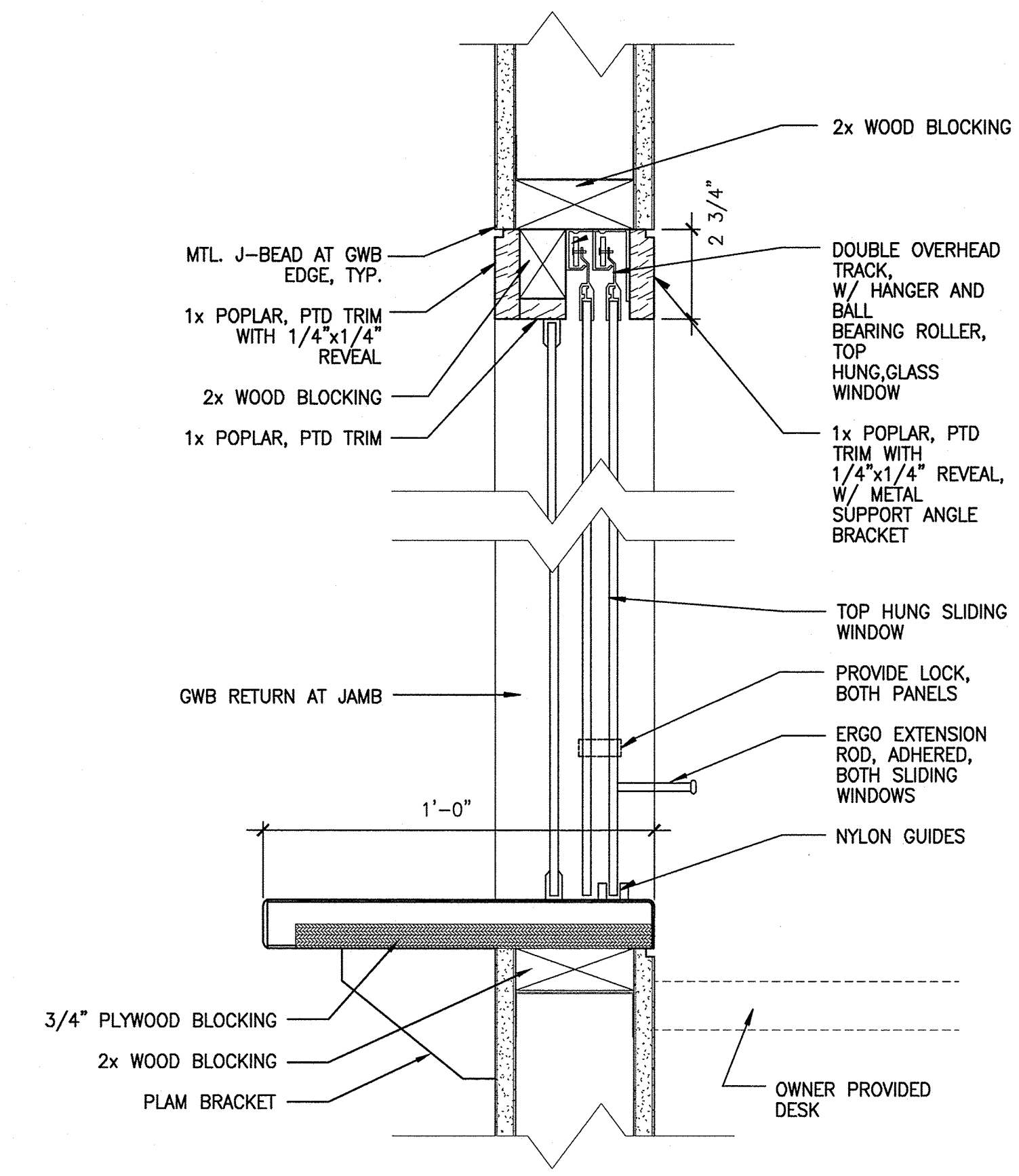
1. ALIGN CEILING ITEMS AS SHOWN, WITH COMMON CENTERLINES. TYPICALLY, CENTER ITEMS IN CEILINGS, OR IN AREAS UNLESS INDICATED OTHERWISE.
2. MATCH EXISTING CEILING HEIGHTS.
3. EXCEPT WHERE INDICATED, CENTER CEILING GRIDS IN ROOMS. USE HALF TILES OR GREATER @ PERIMETERS AS POSSIBLE.
4. PROVIDE ACCESS PANELS AS REQUIRED IN GWB CEILINGS FOR ACCESS TO MECHANICAL VALVES/ CONTROLS. REFERENCE MECHANICAL.

KEYED NOTES:

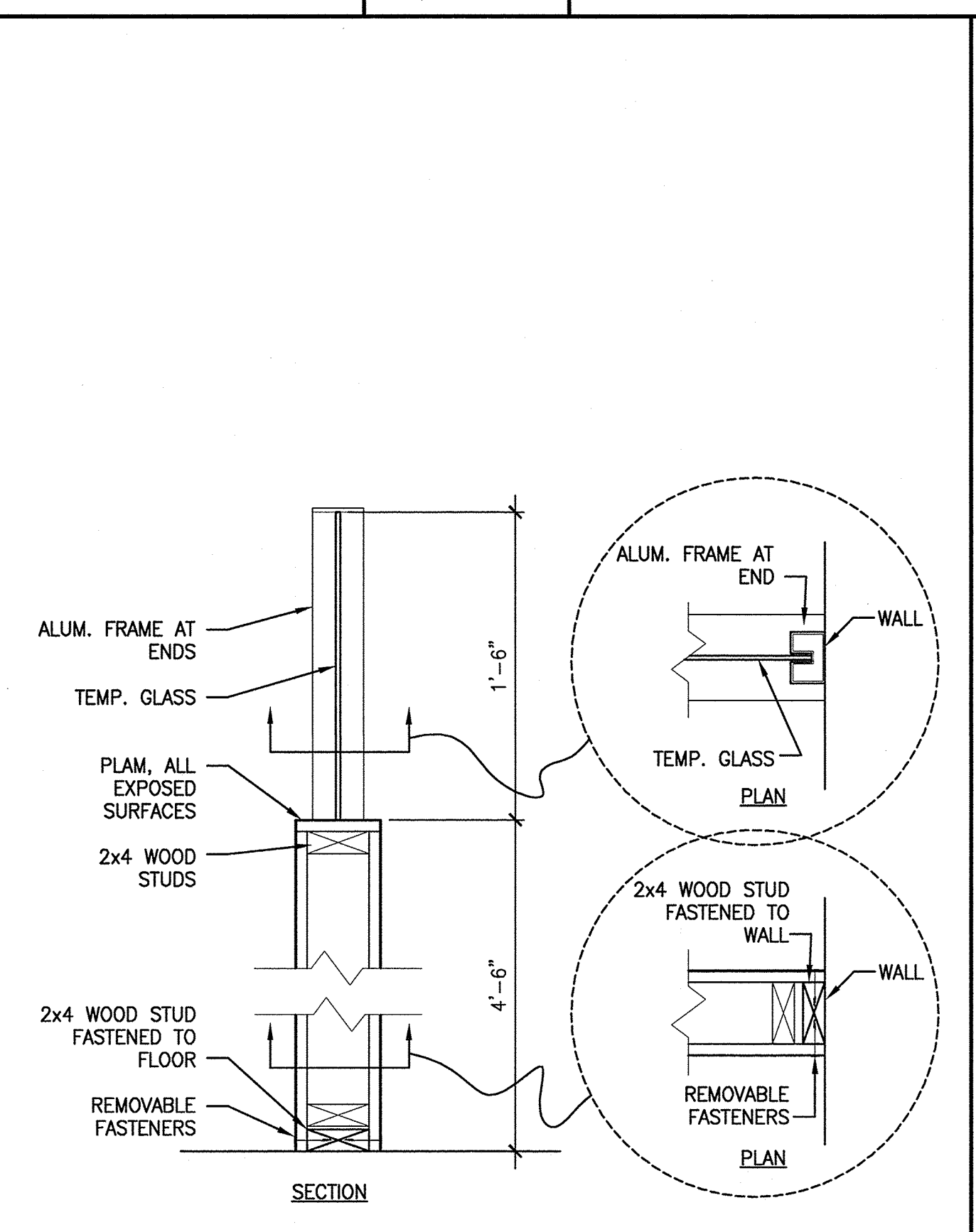
- 1 EXISTING CEILING TO REMAIN.
- 2 NA
- 3 EXISTING GWB SOFFIT TO REMAIN, PTD

TRANSACTION WINDOWS

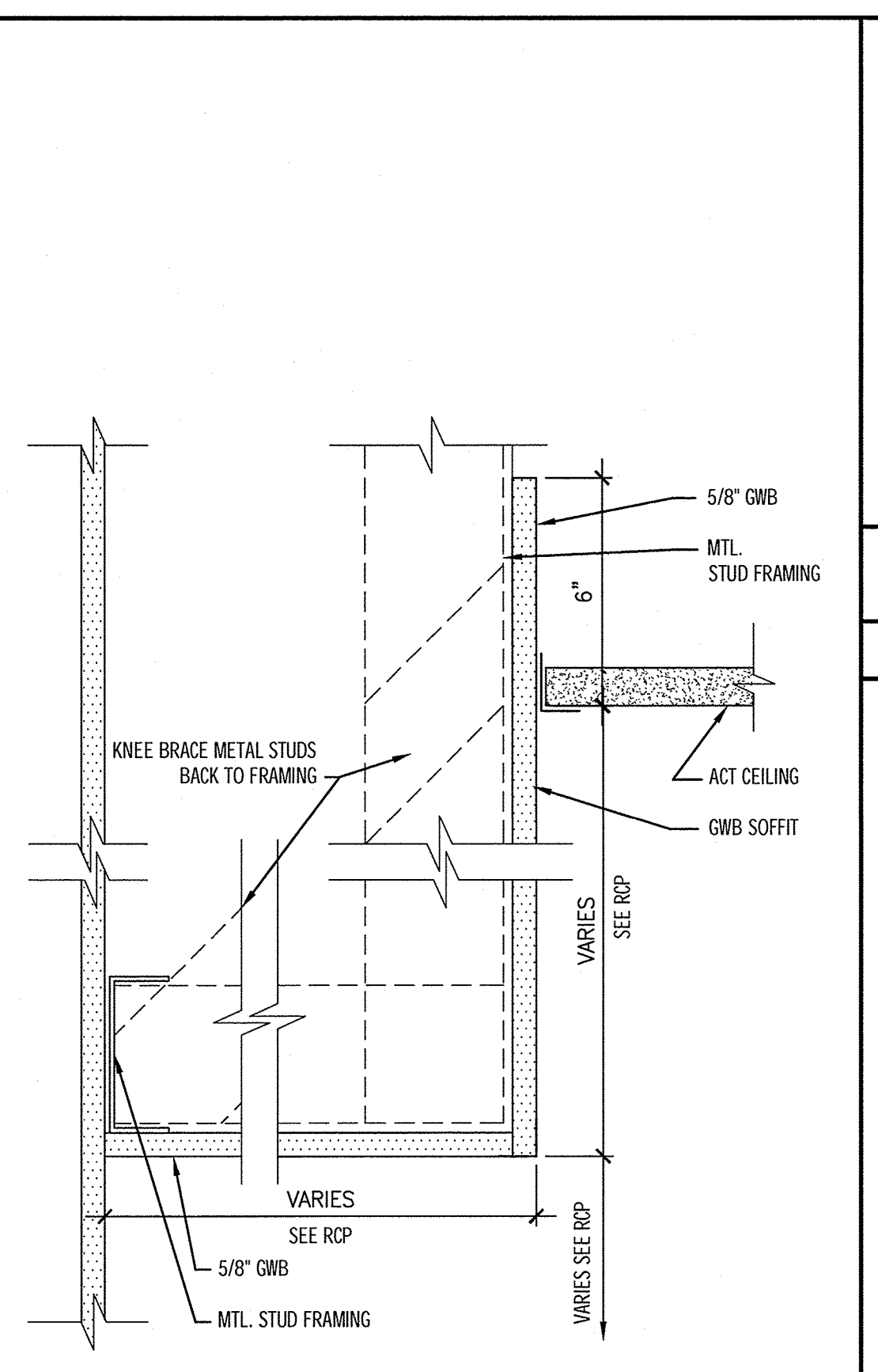
1. OVERHEAD TRACKS: ALUMINUM, OPEN DOUBLE OVERHEAD TRACK FOR PASS-THRU WINDOWS.
 - a. PRODUCT: C. R. LAURENCE CO., INC.; CRL D9A "MASTEROLL" TRACK SYSTEM, SATIN ANODIZED.
2. HANGERS: ALUMINUM, FRONT-MOUNTED.
 - a. PRODUCT: C. R. LAURENCE CO., INC.; CRL D28A "MASTEROLL" TRACK SYSTEM, SATIN ANODIZED.
3. ROLLERS: FLAT NYLON BALL BEARING ROLLER, 7/8-INCH DIAMETER, WITH SCREW STUD.
 - a. PRODUCT: C. R. LAURENCE CO., INC.; CRL D679 "MASTEROLL" TRACK SYSTEM.
4. BOTTOM CHANNELS: ALUMINUM, UNIVERSAL FRAMING EXTRUSIONS FOR GLAZING.
 - a. PRODUCT: C. R. LAURENCE CO., INC.; CRL D623A.
5. GUIDES: NYLON, LOWER GUIDES TO KEEP SLIDING PANELS VERTICAL AND PREVENT LIFT-OUT.
 - a. PRODUCT: C. R. LAURENCE CO., INC.; CRL D30.
6. LOCKS: UNIVERSAL PLUNGER LOCK, WITH KEYS.
 - a. PRODUCT: C. R. LAURENCE CO., INC.; CRL D802C
7. PULL HANDLES: ERGONOMIC POLYSTYRENE EXTENSION PULL, 6 INCH LENGTH.
 - a. PRODUCT: ERGO PROS; "ERGOGLIDE" (WWW.ERGOPROS.COM)
 - b. COLOR: AS SELECTED BY ARCHITECT FROM MANUFACTURER'S FULL RANGE.



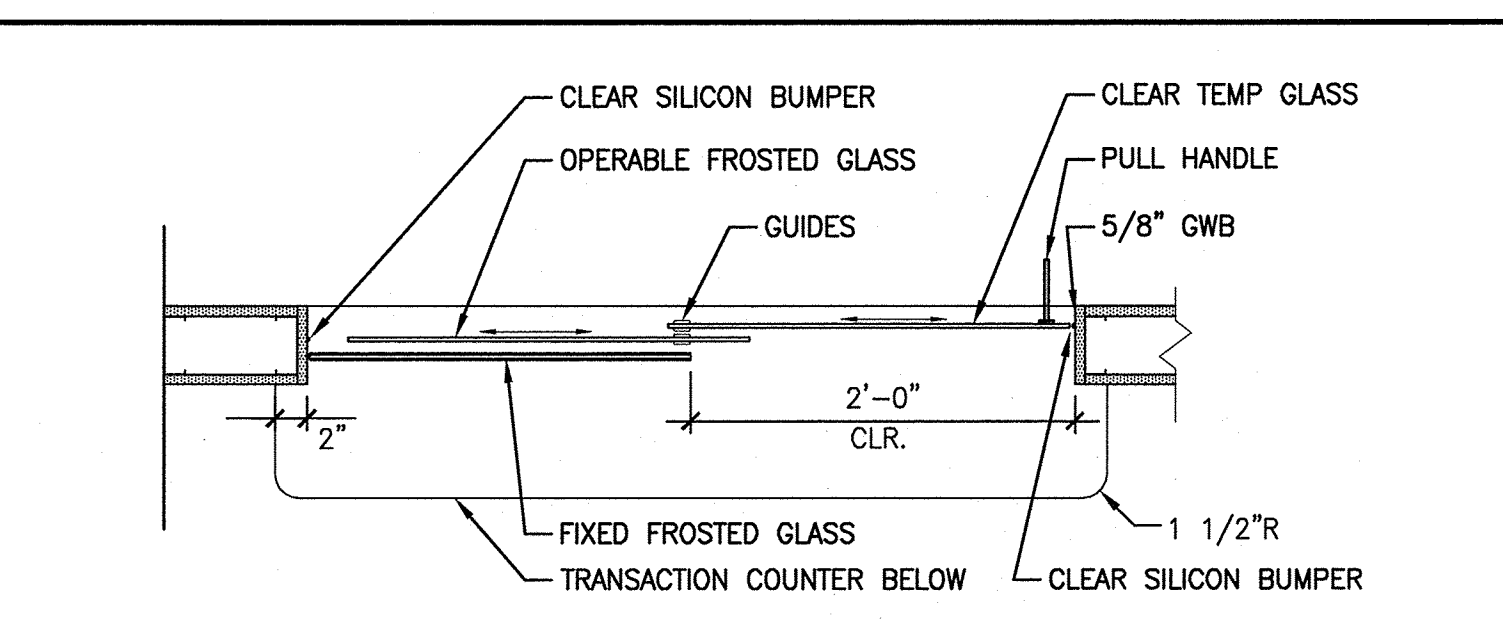
A1 TRANSACTION WINDOW DETAIL
3"=1'-0" *



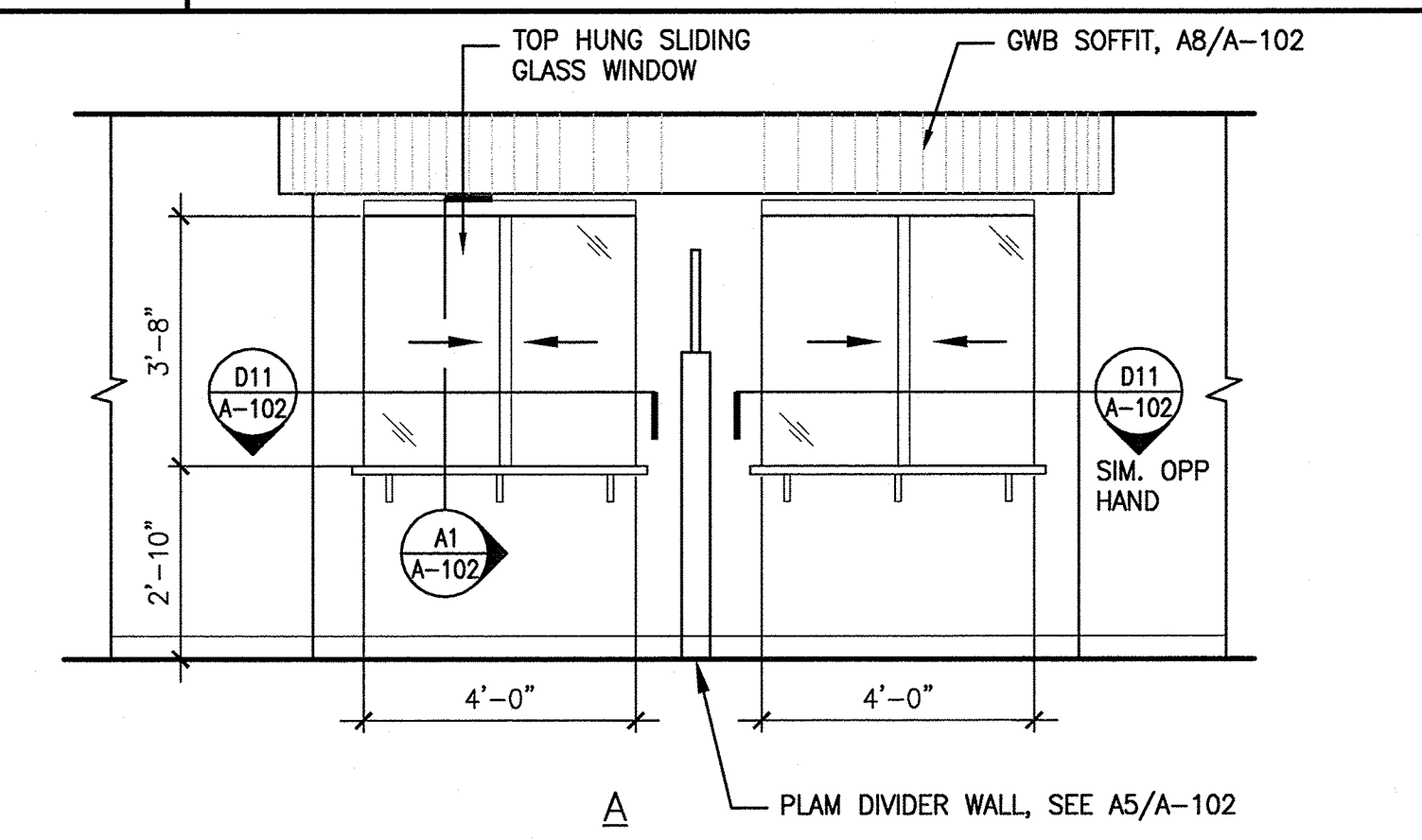
A5 DIVIDER WALL DETAIL
1 1/2"=1'-0" *



A8 SOFFIT DETAIL
3"=1'-0" *



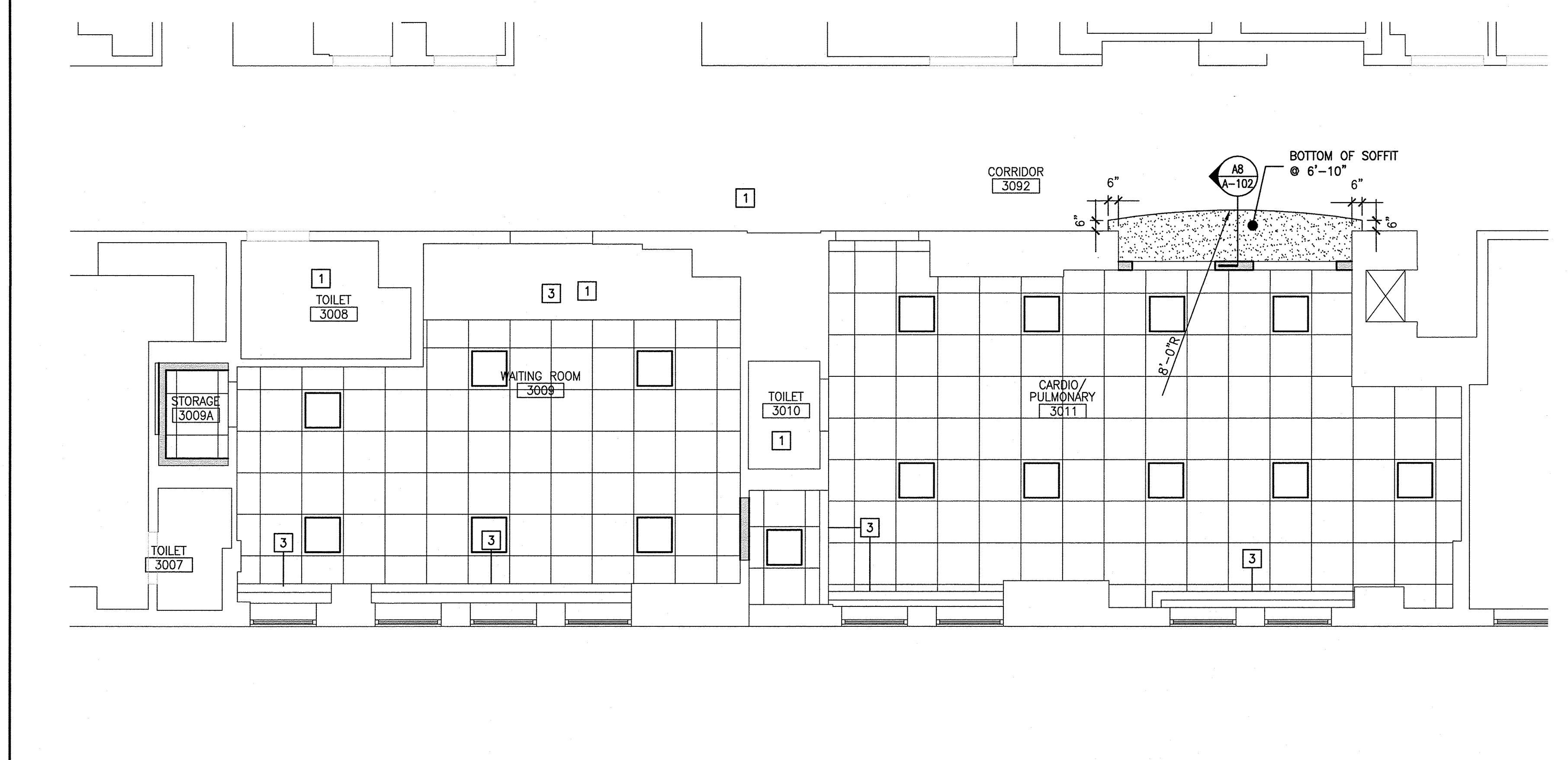
D11 INTERIOR ELEVATION
1"=1'-0" *



A11 INTERIOR ELEVATION
3/8"=1'-0" *

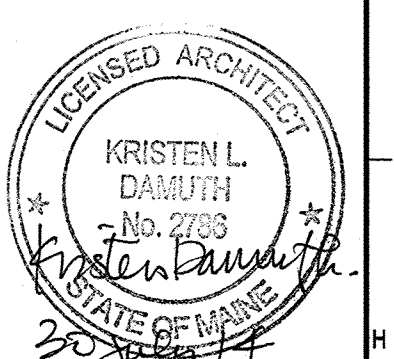
F6 REFLECTED CEILING PLAN

1/4"=1'-0" *



144 Fore Street, P.O. Box 618
Portland, Maine 04104
Tel: (207) 772-3846
Fax: (207) 772-0070
www.smartinc.com

ARCHITECTURE
ENGINEERING
PLANNING
INTERIORS
ENERGY



PROJECT NORTH:
MAG NORTH PROJECT NORTH

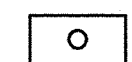
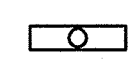


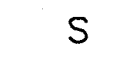
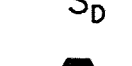

MERCY HOSPITAL
3S PULMONARY RENOVATIONS
STATE STREET - PORTLAND, MAINE
ISSUED FOR CONSTRUCTION
7-30-14
CURRENT ISSUE STATUS:

REV	DESCRIPTION	DATE
0	ISSUED FOR CONSTRUCTION	7-30-14



GRAPHIC SCALE:
0 1'

SCALE: 1/4"=1'-0"
PROJECT MANAGER: KD
JC/DRAWN BY: MDR /MDR
A/E OF RECORD: KD
PROJECT NO: 14087
SMART FILE: A-102-14087
DATE: 7-30-14
SHEET TITLE:
RCP, INTERIOR ELEVATION AND DETAILS
SHEET No.
A-102
© COPYRIGHT 2014 SMART INC.


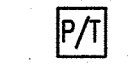


LIGHTING

-  2x4 FLUORESCENT FIXTURE ASSOCIATED CONTROL DEVICE FIXTURE TYPE (SEE LIGHT FIXTURE SCHEDULE)
-  1x4 FLUORESCENT FIXTURE
-  2x2 LED FIXTURE
-  FIXTURE WIRED TO SWITCHED EMERGENCY CIRCUIT
-  SINGLE POLE TOGGLE SWITCH
-  DIMMER SWITCH
-  OCCUPANCY SENSOR
a. INDICATES CONTROLLED FIXTURE
1 =HUBBELL CEILING SENSOR ATD2000CRP



COMMUNICATION & DATA SYSTEMS

-  COMBINATION VOICE/DATA SYSTEM OUTLET
D-DATE LINE V-VOICE LINE
(2)-INDICATES 2 OUTLETS, SINGLE BOX
-  CABLE TELEVISION SYSTEM OUTLET.


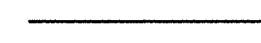

POWER

-  JUNCTION BOX
-  POWER/TELECOMMUNICATIONS POLE
-  HOSPITAL GRADE DUPLEX RECEPTACLE, NEMA 5-20R
-  DOUBLE DUPLEX (QUADRUPLX) RECEPTACLE, NEMA 5-20R

FIRE ALARM

-  FIRE ALARM AUDIBLE/VISIBLE NOTIFICATION APPLIANCE (GENERAL EVACUATION)
-  FIRE ALARM VISIBLE ONLY NOTIFICATION APPLIANCE

LINE TYPES

-  EXISTING
-  NEW
-  DEMOLITION

ABBREVIATIONS

A AMP	AMPERE	LA	LIGHTNING ARRESTER
AFF	ABOVE FINISHED FLOOR	LTG	LIGHTING
AFG	ABOVE FINISHED GRADE	MC	METAL CLAD
AHJ	AUTHORITY HAVING JURISDICTION	MCB	MAIN CIRCUIT BREAKER
AIC	AMPERE INTERRUPTING CAPACITY	MFR	MANUFACTURER
AWG	AMERICAN WIRE GAUGE	MI	MINERAL INSULATED
BFG	BELOW FINISHED GRADE	MLO	MAIN LUG ONLY
BOS	BOTTOM OF STEEL	MTD	MOUNTED
C	CONDUIT, CONDUCTOR	MV	MEDIUM VOLTAGE
CATV	CABLE TELEVISION	NC	NORMALLY CLOSED
CB	CIRCUIT BREAKER	NEC	NATIONAL ELECTRICAL CODE
CCTV	CLOSED CIRCUIT TELEVISION	NEG	NEGATIVE
CPT	CONTROL POWER TRANSFORMER	NEUT	NEUTRAL
CT	CURRENT TRANSFORMER	NIC	NOT IN CONTRACT
CU	COPPER	NO	NORMALLY OPEN
DACT	DIGITAL ALARM COMMUNICATOR TRANSMITTER	NTS	NOT TO SCALE
DB	DIRECT BURIED	PF	POWER FACTOR
DISC	DISCONNECT	PH	PHASE
DN	DOWN	PVC	POLYVINYL CHLORIDE
EMT	ELECTRICAL METALLIC TUBING	RGS	RIGID STEEL CONDUIT
EWC	ELECTRIC WATER COOLER	RSC	RIGID STEEL CONDUIT
FAA	FIRE ALARM ANNUNCIATOR	RTD	RESISTANCE TEMPERATURE DETECTOR
FACP	FIRE ALARM CONTROL PANEL	SN	SOLID NEUTRAL
FBO	FURNISHED BY OTHERS	STP	SHIELDED TWISTED PAIR
FU	FUSE	STT	SHIELDED TWISTED TRIPLET
FWE	FURNISHED WITH EQUIPMENT	SWBD	SWITCHBOARD
GEN	GENERATOR	SWGR	SWITCHGEAR
GFCI	GROUND FAULT CIRCUIT BREAKER	TOS	TOP OF STEEL
GND	GROUND	TRANSF	TRANSFORMER
HP	HORSEPOWER	TVSS	TRANSIENT VOLTAGE SURGE SUPPRESSER
HTR	HEATER	V	VOLT
IG	ISOLATED GROUND	VA	VOLT-AMPERE
IMC	INTERMEDIATE METAL CONDUIT	VAR	VOLT-AMPERE REACTIVE
K	KILO	WM	WATT METER
KCMIL	THOUSAND CIRCULAR MILS	WP	WEATHER PROOF
KV	KILOVOLT	XFMR	TRANSFORMER
KVA	KILOVOLT-AMPERE	XP	EXPLOSION PROOF
KVAR	KILOVOLT-AMPERE REACTIVE		
KW	KILOWATT		
KWH	KILOWATT-HOUR		

GENERAL NOTES:

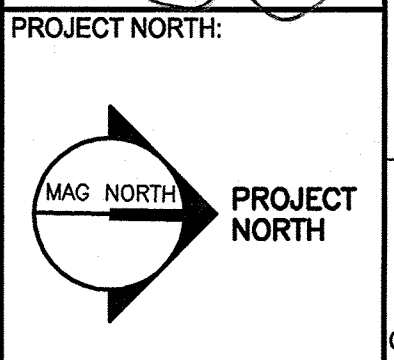
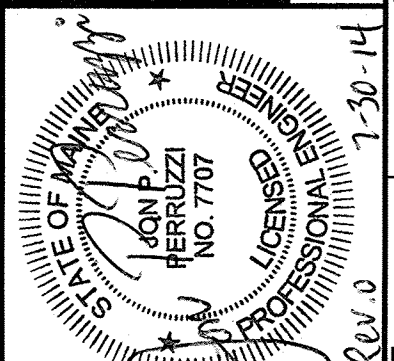
- ALL WORK SHALL BE PERFORMED IN ACCORDANCE WITH NFPA-70, NATIONAL ELECTRICAL CODE (NEC).
- UNLESS OTHERWISE NOTED CONVENIENCE RECEPTACLES SHALL BE MOUNTED 18-INCHES AFF, LIGHTING TOGGLE SWITCHES 48-INCHES AFF AND DATA SYSTEM OUTLETS 18-INCHES.
- AN EQUIPMENT GROUNDING CONDUCTOR SHALL BE INSTALLED WITH EVERY BRANCH CIRCUIT. UNLESS OTHERWISE NOTED WIRING SHALL BE 2#12 AWG CONDUCTORS AND #12 GND. WIRING ORIGINATING FROM EMERGENCY PANELBOARDS SHALL BE INSTALLED IN EMT. WHERE FISHED INTO EXISTING WALLS, WIRING IS PERMITTED TO BE MC CABLE. ALL OTHER BRANCH CIRCUIT WIRING SHALL BE HOSPITAL GRADE MC CABLE.
- LIGHTING TOGGLE SWITCHES SHALL BE COMMERCIAL SPECIFICATION GRADE 120/277 VOLT, SIDE WIRED AND PROVIDED WITH GROUNDING SCREW. DIMMING SWITCHES SHALL BE LEVITON PART #P710-LFZ
- CONVENIENCE RECEPTACLES SHALL BE HOSPITAL GRADE, GROUNDING TYPE NEMA 5-20R, SIDE WIRED.
- PROVIDE WALL PLATES FOR ALL WIRING DEVICES, NYLON SMOOTH TYPE.

GENERAL NOTE

1. ALL GENERAL NOTES, SYMBOL LISTS, AND DETAILS ARE TO BE CONSIDERED AS APPLICABLE TO ALL ELECTRICAL DRAWINGS FOR THIS PROJECT. SYMBOLS AND ABBREVIATIONS SHOWN ON THIS SHEET ARE FOR REFERENCE ONLY AND DO NOT INDICATE THEIR INCORPORATION IN THE DESIGN.

144 Five Street P.O. Box 818
Portland, Maine 04104
Tel: (207) 772-2646
Fax: (207) 772-1070
www.smartinc.com

ARCHITECTURE
ENGINEERING
PLANNING
INTERIORS
ENERGY



MERCY HOSPITAL
3S PULMONARY RENOVATIONS
STATE STREET - PORTLAND, MAINE

ISSUED FOR CONSTRUCTION
7-30-14

ISSUED FOR CONSTRUCTION
7-30-14

DATE

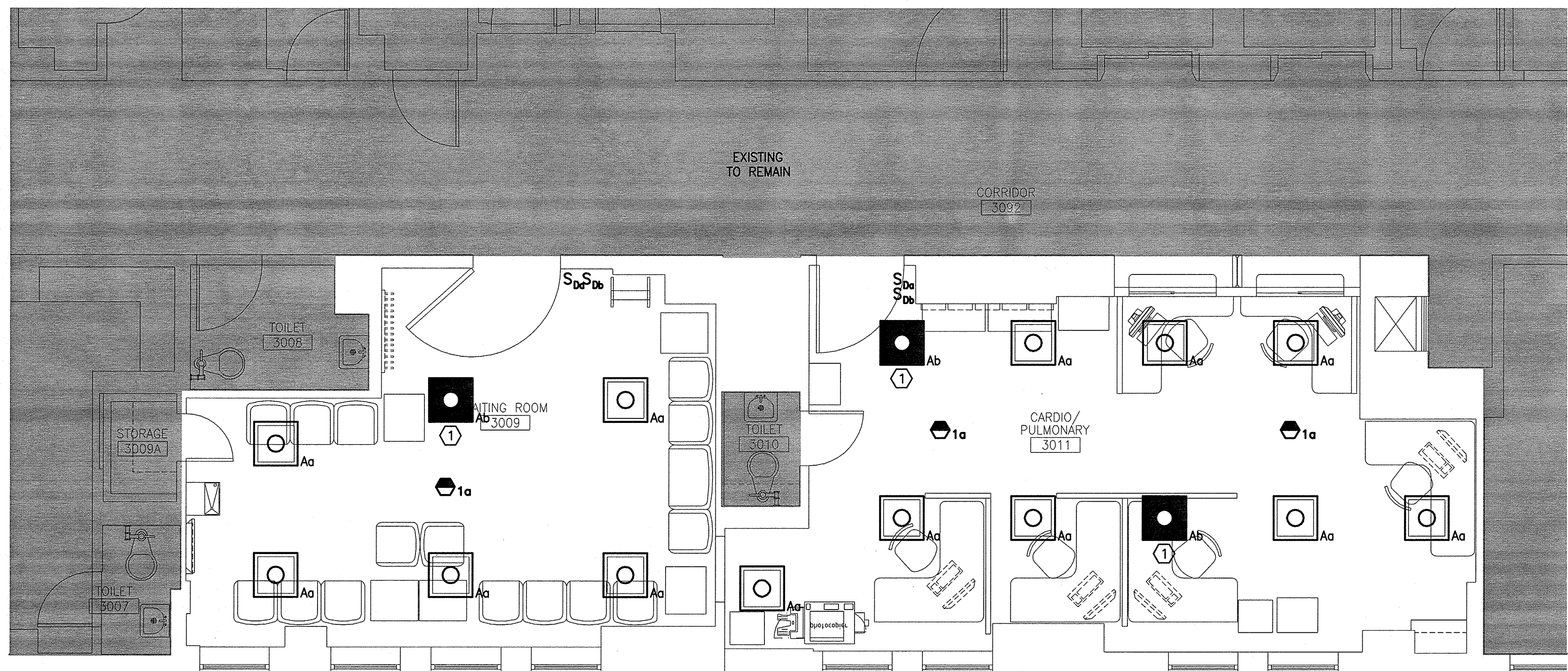
REV	DESCRIPTION	DATE
0	ISSUED FOR CONSTRUCTION	7-30-14

GRAPHIC SCALE:
0" 1"

SCALE: NONE
PROJECT MANAGER: KD
JC/DRAWN BY: MDR / CDS
A/E OF RECORD: JPP
PROJECT NO: 14087
SMART FILE: E-001-14087
DATE: 7-30-14

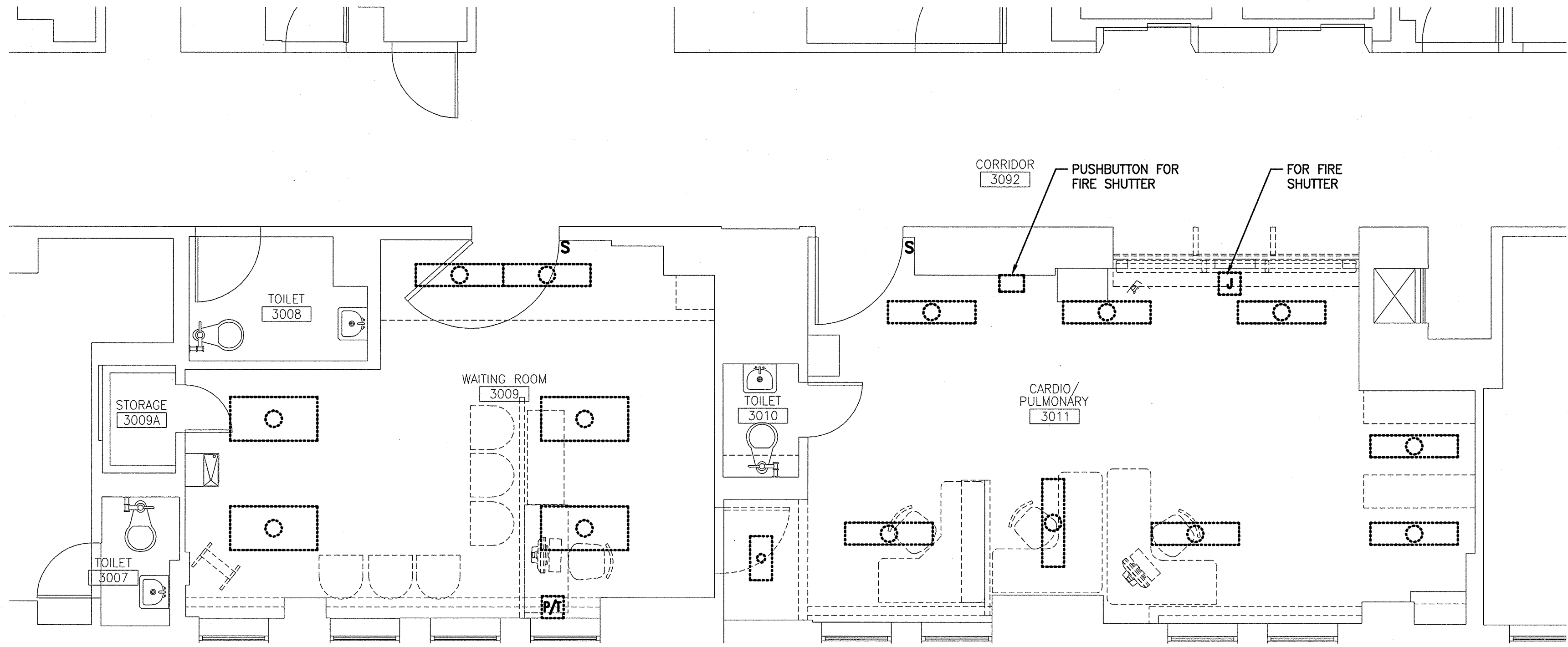
SHEET TITLE:
**LEGEND AND
GENERAL NOTES**

SHEET No.
E-001



F1 LIGHTING PLAN

1/4"=1'-0"



A1 ELECTRICAL DEMO PLAN

1/4"=1'-0"

NOTES:

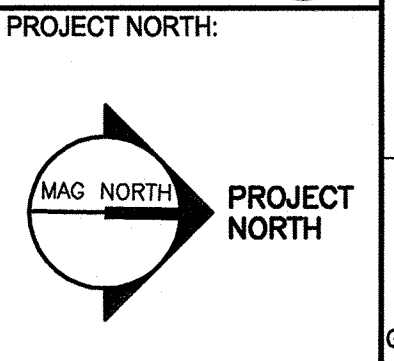
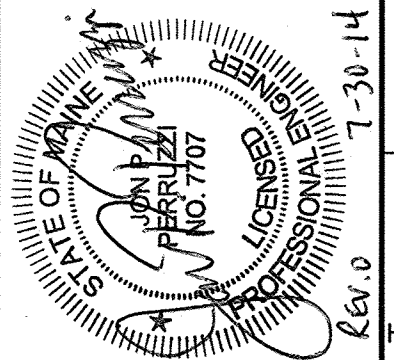
- SEE SHEET E-001 FOR LEGEND AND GENERAL NOTES.
- FIXTURE A IS A 2x2 RECESSED LED DIMMABLE TROFFER WITH ACRYLIC LENS. LITHONIA PART # 2GTL2LP835

KEYED NOTE:

① CONNECT TO LIFE SAFETY CIRCUIT.

144 Free Street P.O. Box 618
Portland, Maine 04104
Tel: (207) 772-2846
Fax: (207) 772-1070
www.smartinc.com

ARCHITECTURE
ENGINEERING
PLANNING
INTERIORS
ENERGY



**MERCY HOSPITAL
3S PULMONARY RENOVATIONS**
STATE STREET - PORTLAND, MAINE

**ISSUED FOR CONSTRUCTION
7-30-14**

CURRENT ISSUE STATUS:

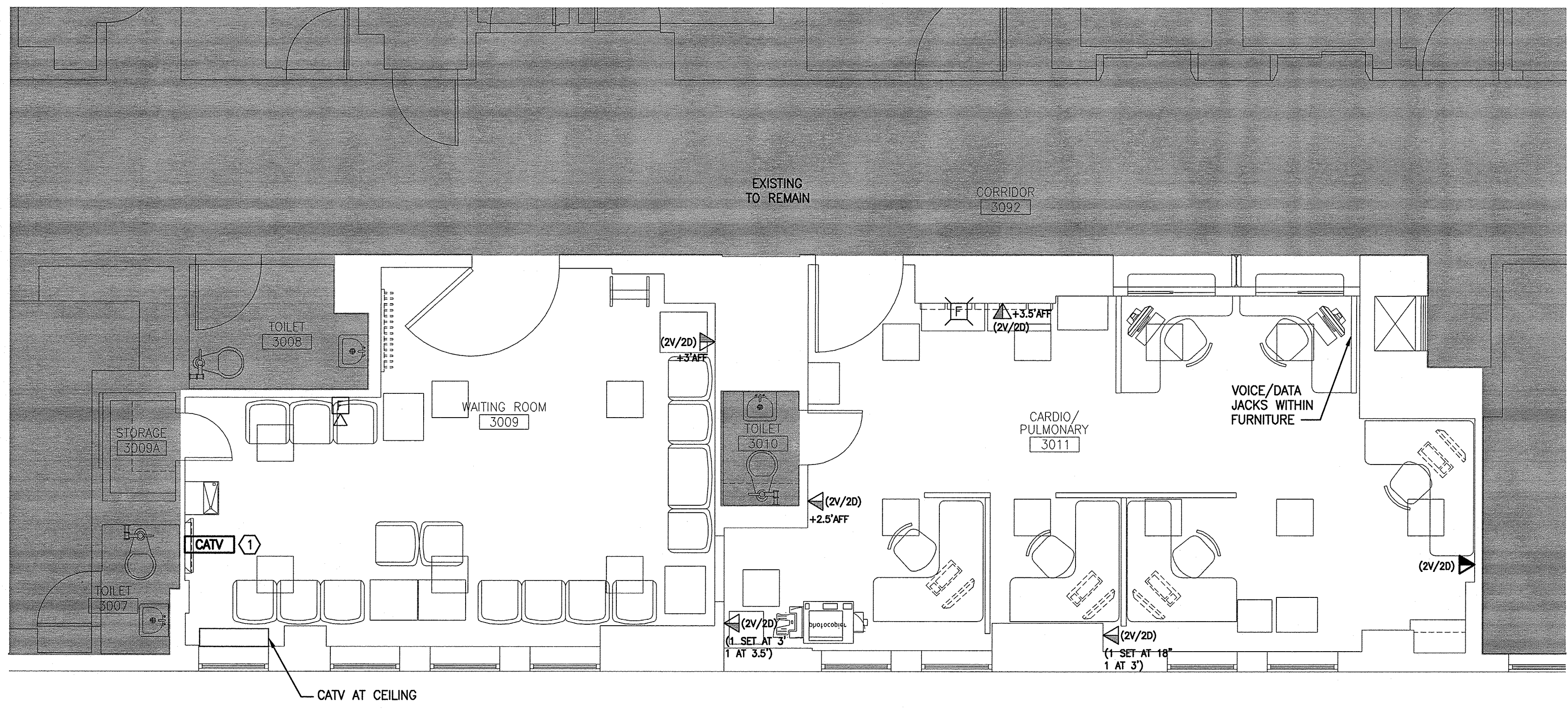
REV	DESCRIPTION	DATE
0	ISSUED FOR CONSTRUCTION	7-30-14

GRAPHIC SCALE:
0" 1"

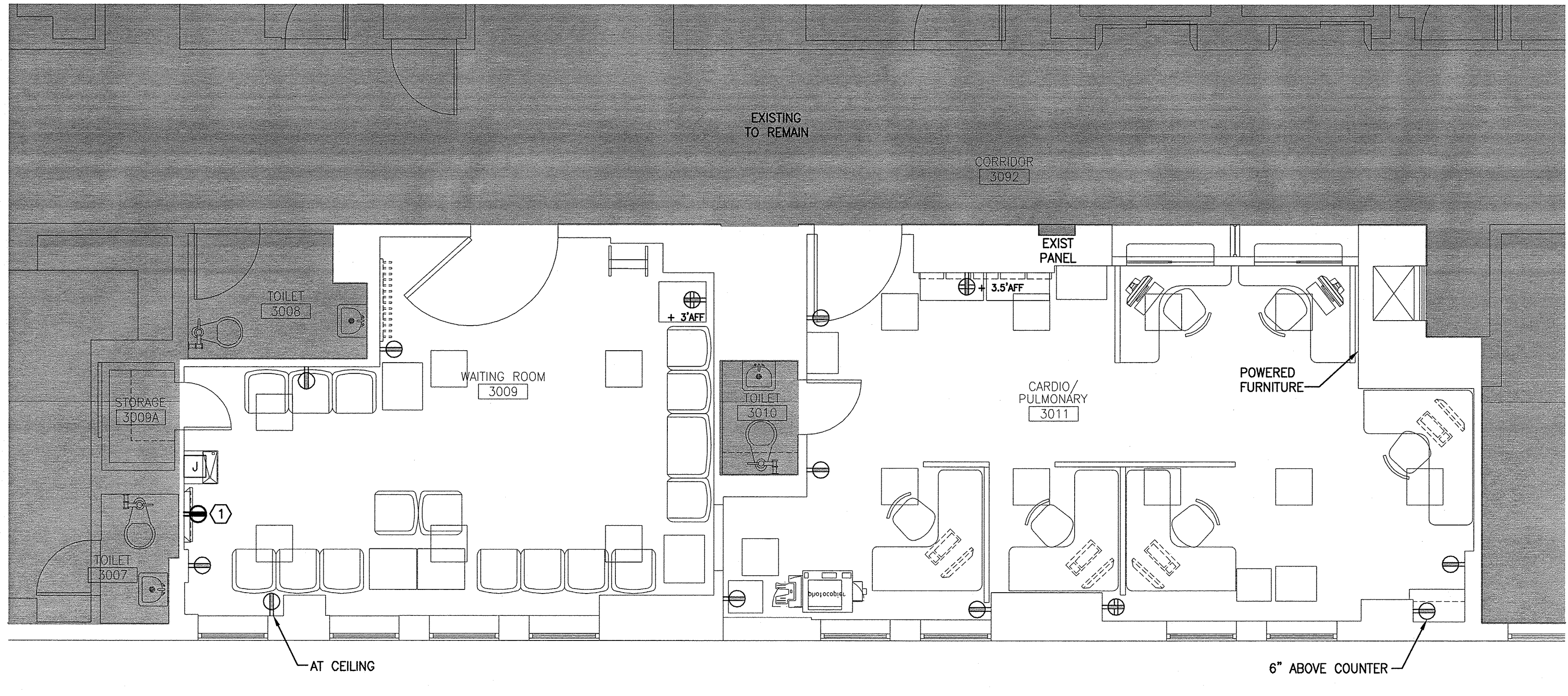
SCALE: 1/4"=1'-0"
PROJECT MANAGER: KD
JC/DRAWN BY: MDR / CDS
A/E OF RECORD: JPP
PROJECT NO: 14087
SMART FILE: E-101-14087
DATE: 7-30-14

SHEET TITLE:
**DEMOLITION
AND LIGHTING
PLANS**

SHEET No.
E-101



F1 SYSTEMS PLAN
1/4"=1'-0"



A1 POWER PLAN
1/4"=1'-0"

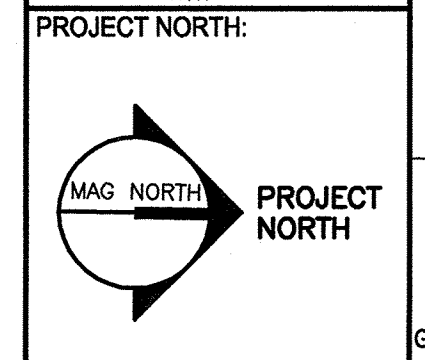
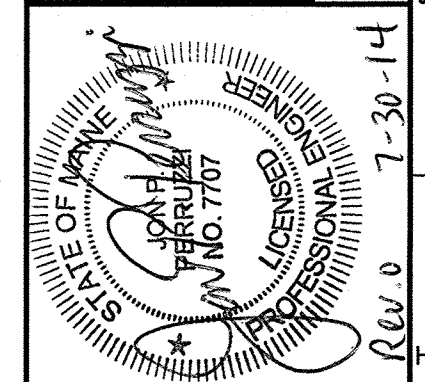
NOTE:
1. SEE SHEET E-001 FOR LEGEND AND GENERAL NOTES.

KEYED NOTES:
① COORDINATE DEVICE HEIGHT WITH MONITOR LOCATION.

144 Fore Street P.O. Box 618
Portland, Maine 04104
Tel: (207) 772-2846
Fax: (207) 772-1070
www.smartinc.com

ARCHITECTURE
ENGINEERING
PLANNING
INTERIORS
ENERGY

SMART



**MERCY HOSPITAL
3S PULMONARY RENOVATIONS**
STATE STREET - PORTLAND, MAINE

**ISSUED FOR CONSTRUCTION
7-30-14**

CURRENT ISSUE STATUS:

REV	ISSUED FOR CONSTRUCTION	DATE
0		7-30-14

GRAPHIC SCALE:
0" 1"

SCALE: 1/4"=1'-0"

PROJECT MANAGER: KD
JC/DRAWN BY: MDR / CDS
A/E OF RECORD: JPP
PROJECT NO: 14087
SMRT FILE: E-102-14087
DATE: 7-30-14

SHEET TITLE:
**POWER AND
SYSTEMS PLANS**

SHEET No.
E-102

© COPYRIGHT 2014 SMART INC