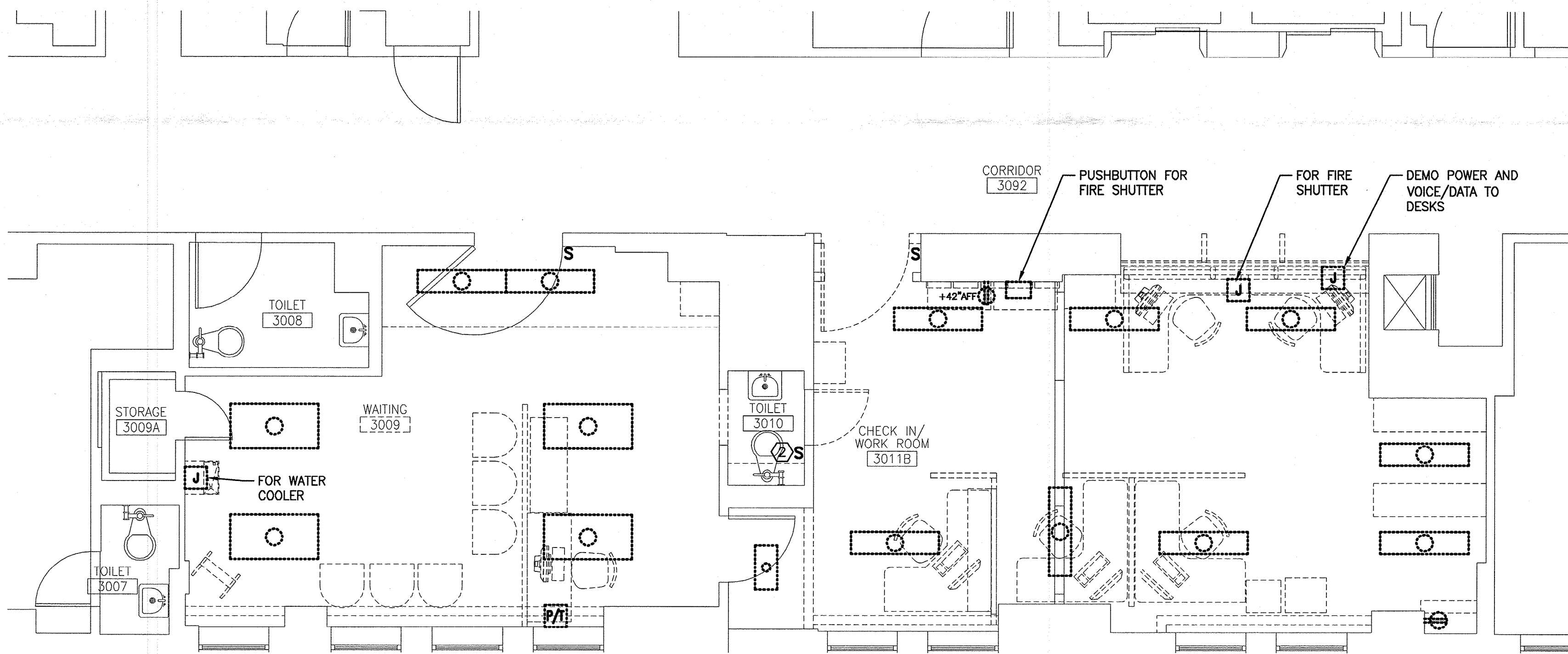


**F1 LIGHTING PLAN**

1/4"=1'-0"



**A1 ELECTRICAL DEMO PLAN**

1/4"=1'-0"

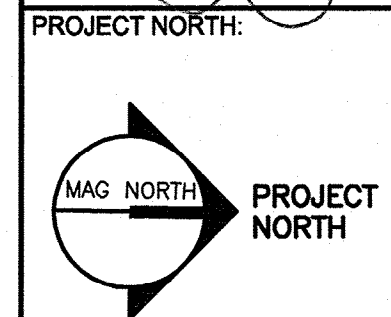
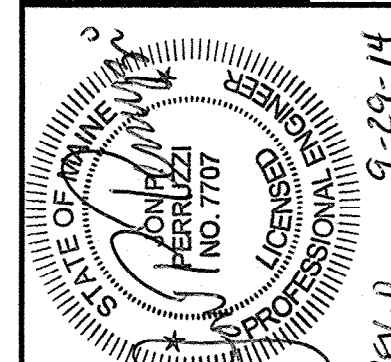
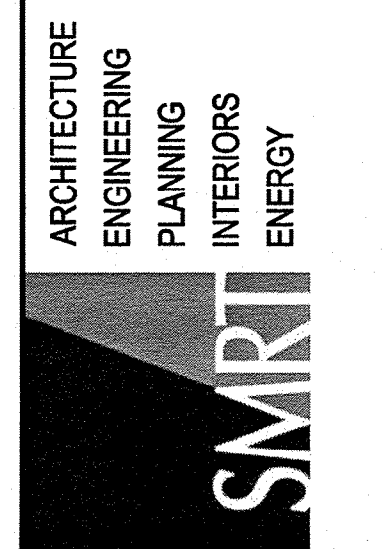
**NOTES:**

- SEE SHEET E-001 FOR LEGEND AND GENERAL NOTES.
- FIXTURE A IS A 2x2 RECESSED LED DIMMABLE TROFFER WITH ACRYLIC LENS. LITHONIA PART # 2GTL2LPB35. FIXTURES B IS A 6" OPEN, LED DOWNLIGHT. GOTHAM PART # EVO-35/10-6AR-MVOLT.
- ALL LIGHT FIXTURES, EXCEPT THOSE IDENTIFIED TO BE CONNECTED TO A LIFE SAFETY CIRCUIT, SHALL BE CONNECTED TO EXISTING LIGHTING CIRCUITS IN THE AREA.

**KEYED NOTES:**

- CONNECT TO LIFE SAFETY CIRCUIT.
- SWITCH TO BE RELOCATED.
- RELOCATED SWITCH POSITION.

144 Fore Street P.O. Box 618  
Portland, Maine 04104  
Tel: (207) 772-3946  
Fax: (207) 772-1070  
www.smartinc.com



**MERCY HOSPITAL  
3S PULMONARY RENOVATIONS**  
STATE STREET - PORTLAND, MAINE

**ISSUED FOR CONSTRUCTION**  
9-29-14

CURRENT ISSUE STATUS:

REV	DESCRIPTION	DATE
0	ISSUED FOR CONSTRUCTION	9-29-14

GRAPHIC SCALE:  
0" 1"

SCALE: 1/4"=1'-0"  
PROJECT MANAGER: KD  
JC/DRAWN BY: MDR / CDS  
A/E OF RECORD: JPP  
PROJECT NO: 14087  
SMART FILE: E-101-14087  
DATE: 9-28-14

SHEET TITLE:  
**DEMOLITION  
AND LIGHTING  
PLANS**

SHEET No.  
**E-101**

© COPYRIGHT 2014 SMART INC