

GENERAL DEMOLITION NOTES:

- COORDINATE EXTENT OF DEMOLITION WITH LOCATIONS OF PARTITIONS DESCRIBED ON PLANS AND WITH LOCATIONS OF FINISHES NOTED AS EXISTING TO REMAIN.
- ANY WALL, PARTITION OR SURFACE DISTURBED BECAUSE OF NEW WORK OR DEMOLITION SHALL BE PATCHED AND FINISHED CONTINUOUSLY TO THE NEAREST CORNER UNLESS NOTED OTHERWISE, MATCH EXISTING ADJACENT CONSTRUCTION FINISHES, CONTINUITY AND FIRE RATINGS UNLESS NOTED OTHERWISE.
- PROTECT ALL FINISHES, MATERIALS AND EQUIPMENT NOTED AS EXISTING TO REMAIN. CONTRACTOR SHALL BE RESPONSIBLE TO REPLACE ALL FINISHES, MATERIALS AND EQUIPMENT DAMAGED DURING CONSTRUCTION.
- DIMENSIONS INDICATED ± ARE EXISTING CONDITION DIMENSIONS TO BE VERIFIED IN FIELD.

DEMOLITION KEY NOTES:

- REMOVE EXISTING WALL MOUNTED LIGHT BOX, RETAIN FOR OWNER.
- REMOVE EXISTING CEILING SYSTEM TO ALLOW THE INSTALLATION OF ELEC. OR MECH. WORK. LIGHTS WILL BE REINSTALLED.
- EXISTING IR MACHINE, REMOVED BY SIEMENS.
- REMOVE CEILING SYSTEM COMPLETE.
- REMOVE FLOORING COMPLETE, PREPARE FOR INSTALLATION OF REPLACEMENT.
- REMOVE ALL ACCESSORIES PRIOR TO PAINTING AND RETURN TO OWNER.
- REMOVE EXISTING UNISTRUT SYSTEM AT CEILING COMPLETE.
- REMOVE PORTION OF EXISTING SLAB TO ACCOMMODATE 3 1/2" x 12" FLOOR DUCT. REFER TO SIEMENS FINAL INSTALLATION DRAWINGS FOR EXACT LOCATIONS.
- REMOVE EXISTING EQUIPMENT ANCHOR BOLTS COMPLETE, PATCH CONCRETE SLAB LEVEL WITH ADJACENT EXISTING.

REFLECTED CEILING NOTES

- CEILING HEIGHT AS INDICATED ON DRAWING.
- ALIGN CEILING ITEMS AS SHOWN, WITH COMMON CENTERLINES, TYPICALLY. CENTER ITEMS IN CEILINGS, OR IN AREAS UNLESS INDICATED OTHERWISE.
- EXCEPT WHERE INDICATED, CENTER CEILING GRIDS IN ROOMS. USE HALF TILES OR GREATER @ PERIMETERS AS POSSIBLE.

SYMBOL LEGEND

- 2x2 SUSPENDED CEILING PANEL AND GRID ASSEMBLY.
- DOWN LIGHT.
- CEILING MOUNTED EXIT LIGHT.
- RETURN AIR GRILLE.
- SUPPLY AIR GRILLE.
- EXHAUST AIR GRILLE.

FINISH LEGEND:

- ACOUSTICAL CEILING TILE:**
- ACT-1 ARMSTRONG, HEALTH ZONE ULTIMA #1935, SQUARE LAY-IN 24X24-INCH, PRELUDE 15/16-INCH GRID
 - ACT-2 ARMSTRONG, FINE FISSURED #1728, SQUARE LAY-IN 24X24-INCH, PRELUDE 15/16-INCH GRID
- CORNER GUARD:**
- CG-1 C/S ACRYVYN, 135", APPLIED WITH 2-INCH WING, HEIGHT TO 48" ABOVE BASE, 858 PUMICE
- PAINT:**
- PTD-1 (FIELD) BENJAMIN MOORE, 963 MARITIME WHITE
 - PTD-2 (HM DOOR/WINDOW FRAMES) BENJAMIN MOORE, AC-33MESA VERDE TAN
 - PTD-3 (ACCENT) BENJAMIN MOORE, 1606 COBBLESTONE PATH
- PLASTIC LAMINATE:**
- PLAM-1 (CASEWORK) WILSONART, 4883-38 SABLE SOAPSTONE
- PROTECTIVE WALL COVERING:**
- PWC C/S ACRYVYN, PEBBLETTE TEXTURE, HEIGHT TO 48" ABOVE BASE, 858 PUMICE
- RUBBER BASE:**
- RB-1 JOHNSONITE, TRADITIONAL WALL BASE, 4-INCH HEIGHT, 80 FAWN
- RUBBER SHEET FLOORING:**
- RUB-1 NORA SYSTEMS, INC., NORAPLAN ENVIRONCARE, 3MM THICK, COLD-WELD SEAMS, 4-INCH SELF-COVE BASE, 2784 SILVER CROWN
- VINYL COMPOSITION TILE:**
- VCT-1 MANNINGTON COMMERCIAL, ESSENTIALS, 127 WARM BEIGE

FLOOR PLAN NOTES:

- SEE GENERAL NOTES ON G1001.
- AT ALL REMOVED ITEMS, PATCH WALL SURFACE TO MATCH ADJACENT MATERIAL, TYPICAL.
- PROVIDE TOPICAL MOISTURE MITIGATION SYSTEM (KOESTER/ARDEX) AT EQUIP. ROOM 01 AND PROCEDURE ROOM 03.

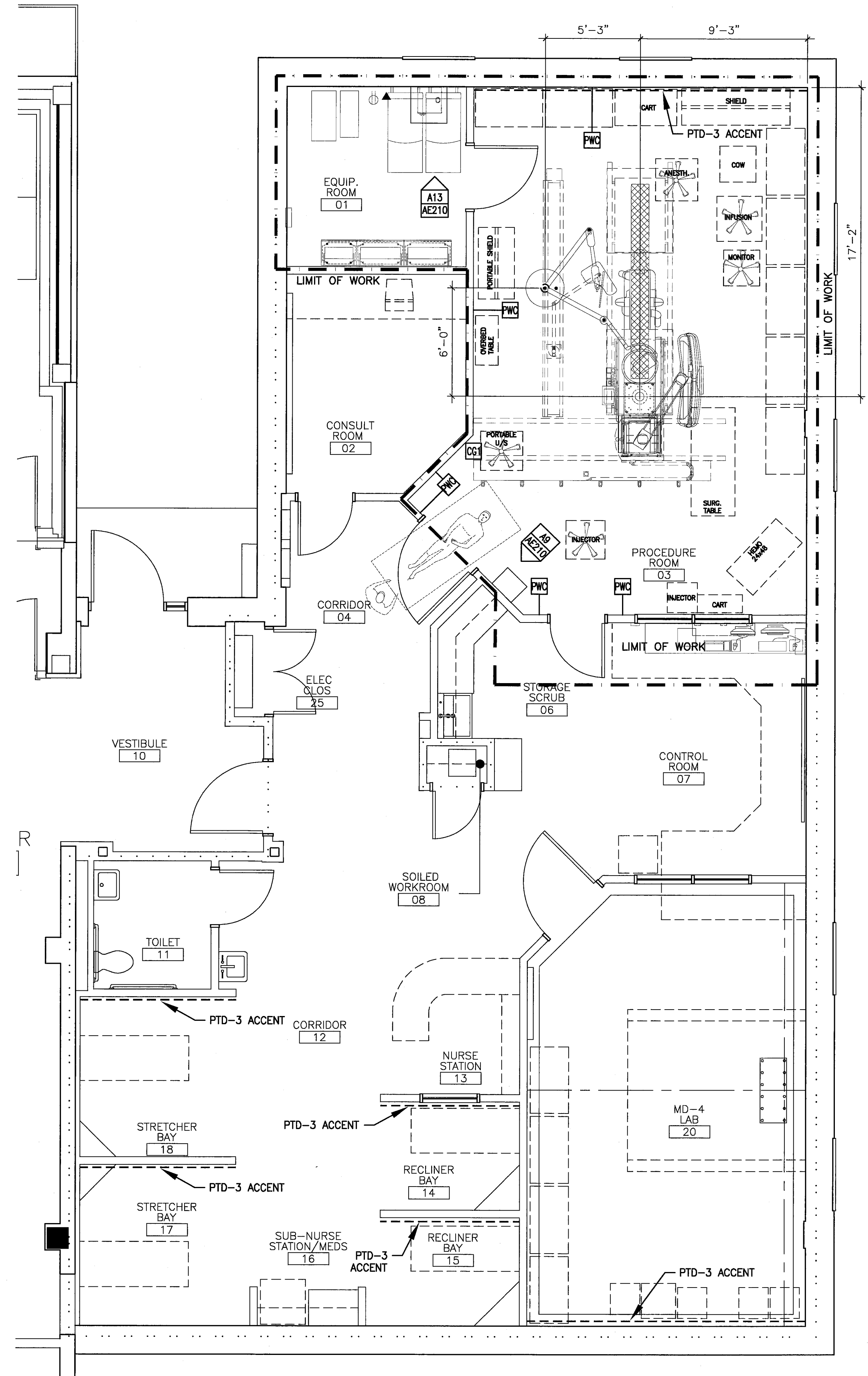
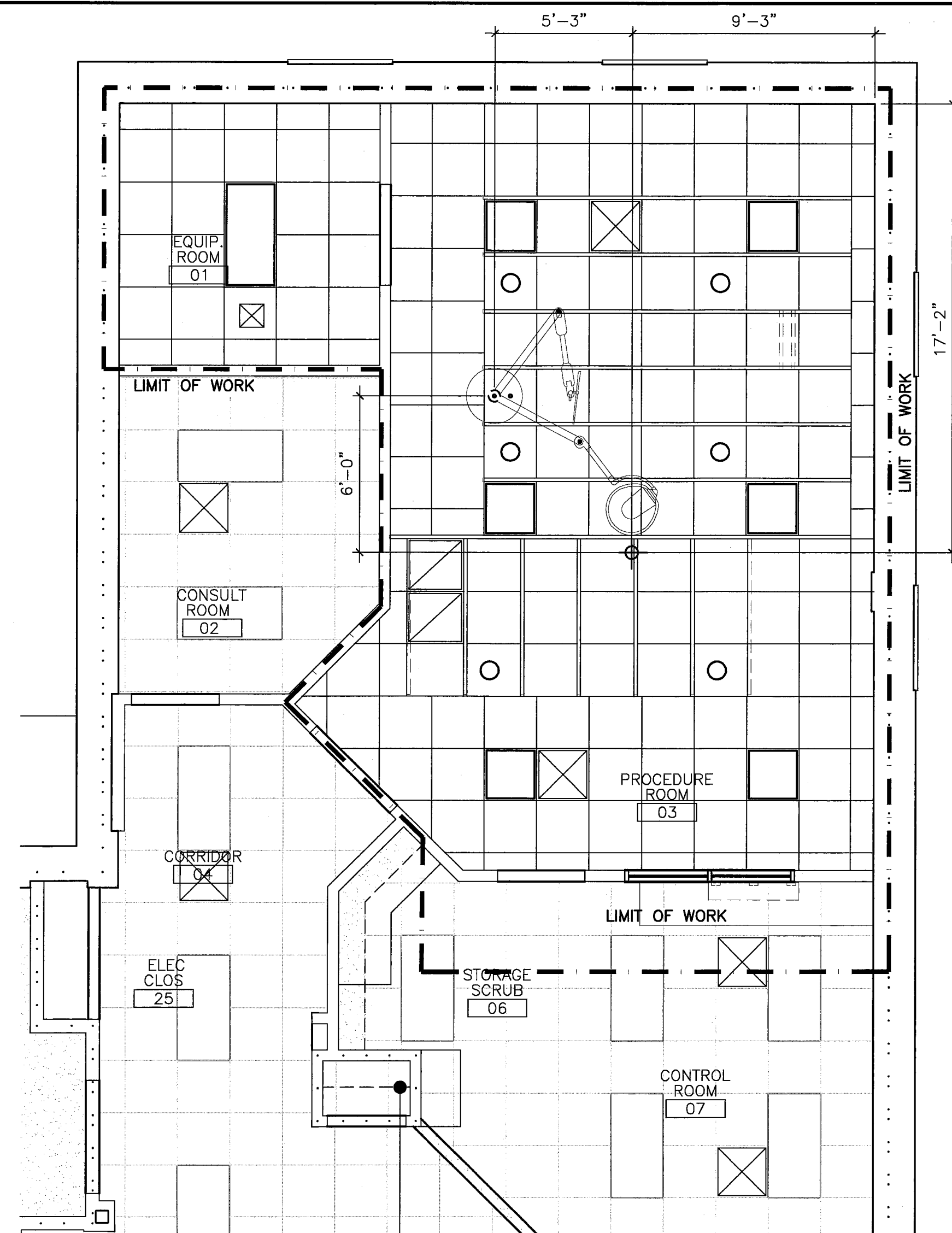
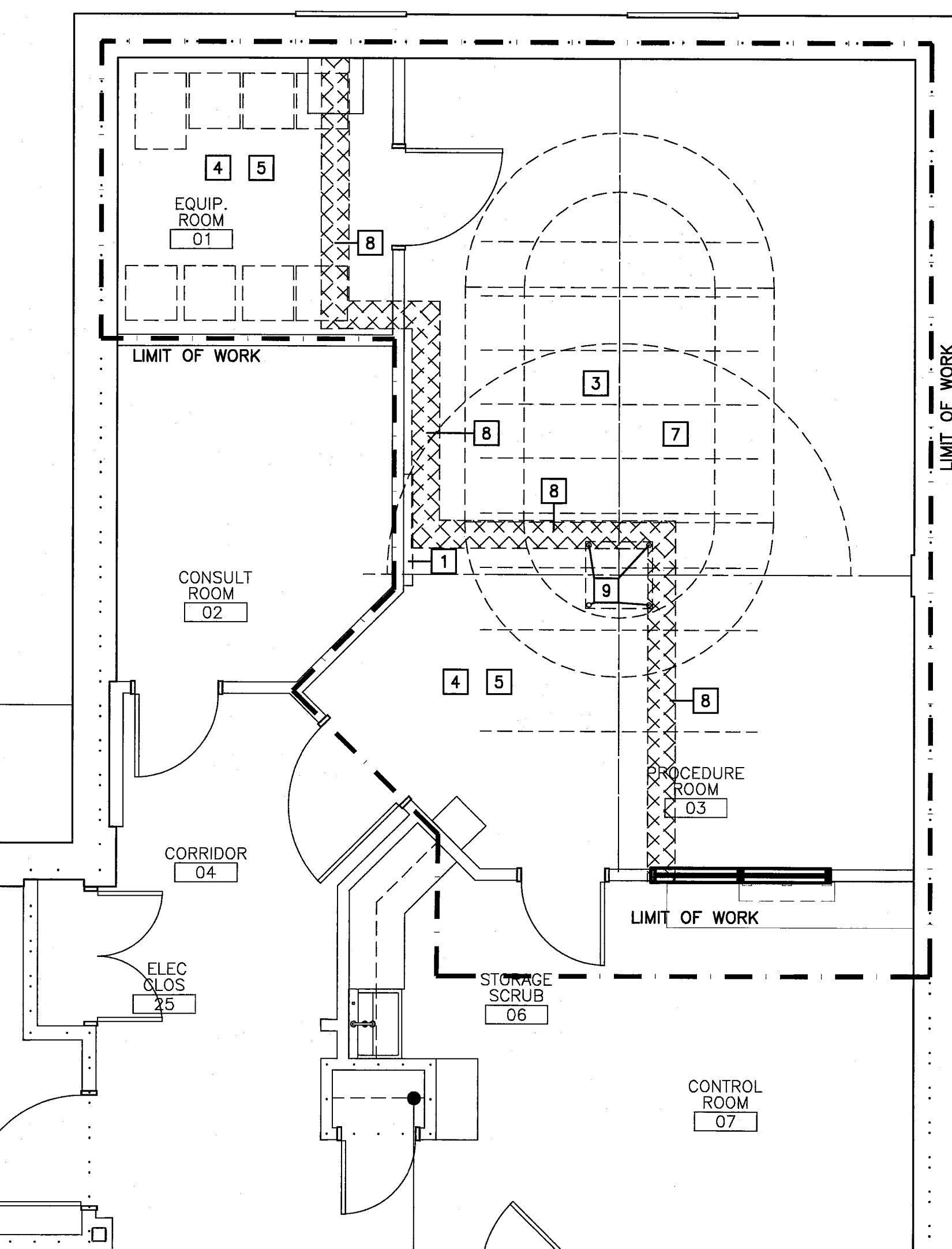
WALL LEGEND:

- PWC PROTECTIVE WALL COVERING, HEIGHT: 48" ABOVE BASE.
- CG1 CORNER GUARD, 135", HEIGHT: 48" ABOVE BASE.

ROOM FINISH SCHEDULE

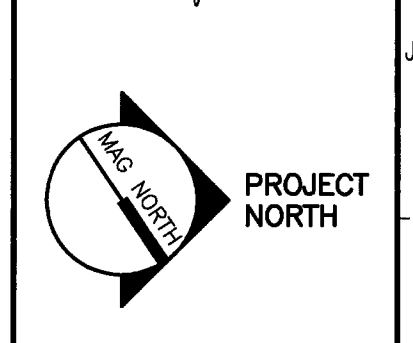
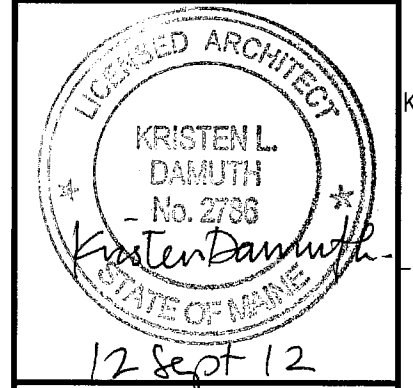
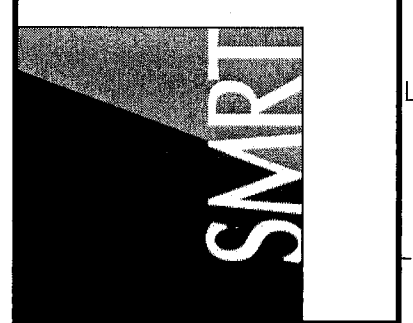
ROOM NUMBER	ROOM NAME	FLOOR	BASE	CEILING				MATERIAL	HEIGHT	ROOM NUMBER
				NORTH	SOUTH	EAST	WEST			
01	EQUIP. ROOM	VCT-1	RB-1	PTD-1	PTD-1	PTD-1	PTD-1	ACT-2	SEE RCP	-
03	PROCEDURE ROOM	RUB-1	FC	PTD-1	PTD-1	PTD-1	PTD-3	ACT-1	SEE RCP	-
07	CONTROL ROOM	EXISTING	EXISTING	PTD-1	PTD-1	PTD-1	PTD-3	EX	SEE RCP	-

*NOTE: ALL WALLS TO BE PAINTED PTD-1 (FIELD), UNLESS OTHERWISE INDICATED ON FLOOR PLAN LAYOUT.



144 Fore Street/P.O. Box 618
Portland, Maine 04104
Tel: (207) 772-3846
Fax: (207) 772-1070
www.smartinc.com

ARCHITECTURE
ENGINEERING
PLANNING
INTERIOR DESIGN
COMMISSIONING



MERCY HOSPITAL
EQUIPMENT REPLACEMENT
PORTLAND, ME

ISSUED FOR CONSTRUCTION
9-12-12

GRAPHIC SCALE:
0" = 1"

SCALE: AS NOTED

PROJECT MANAGER: KD
JC/DRAWN BY: MDR
A/E OF RECORD: KD
CAD FILE: AE100-12076
PROJECT NO: 12076
DATE: 9-12-12
SHEET TITLE:
DEMO PLAN,
FLOOR PLAN, AND
REFLECTED
CEILING PLAN

SHEET No.
AE100

© COPYRIGHT 2009 SMART INC.

A1 DEMO PLAN

1/4"=1'-0" *

A6 REFLECTED CEILING PLAN

1/4"=1'-0" *

A11 FLOOR PLAN LAYOUT

1/4"=1'-0" *