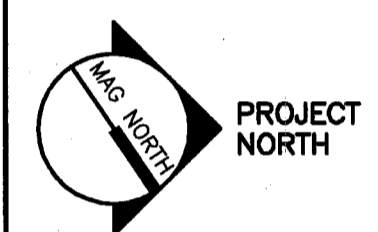
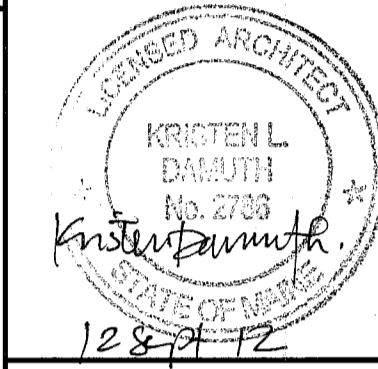
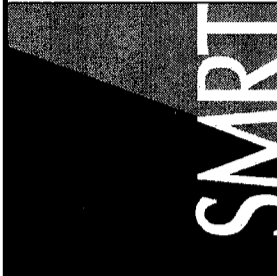


# MERCY HOSPITAL PORTLAND, MAINE

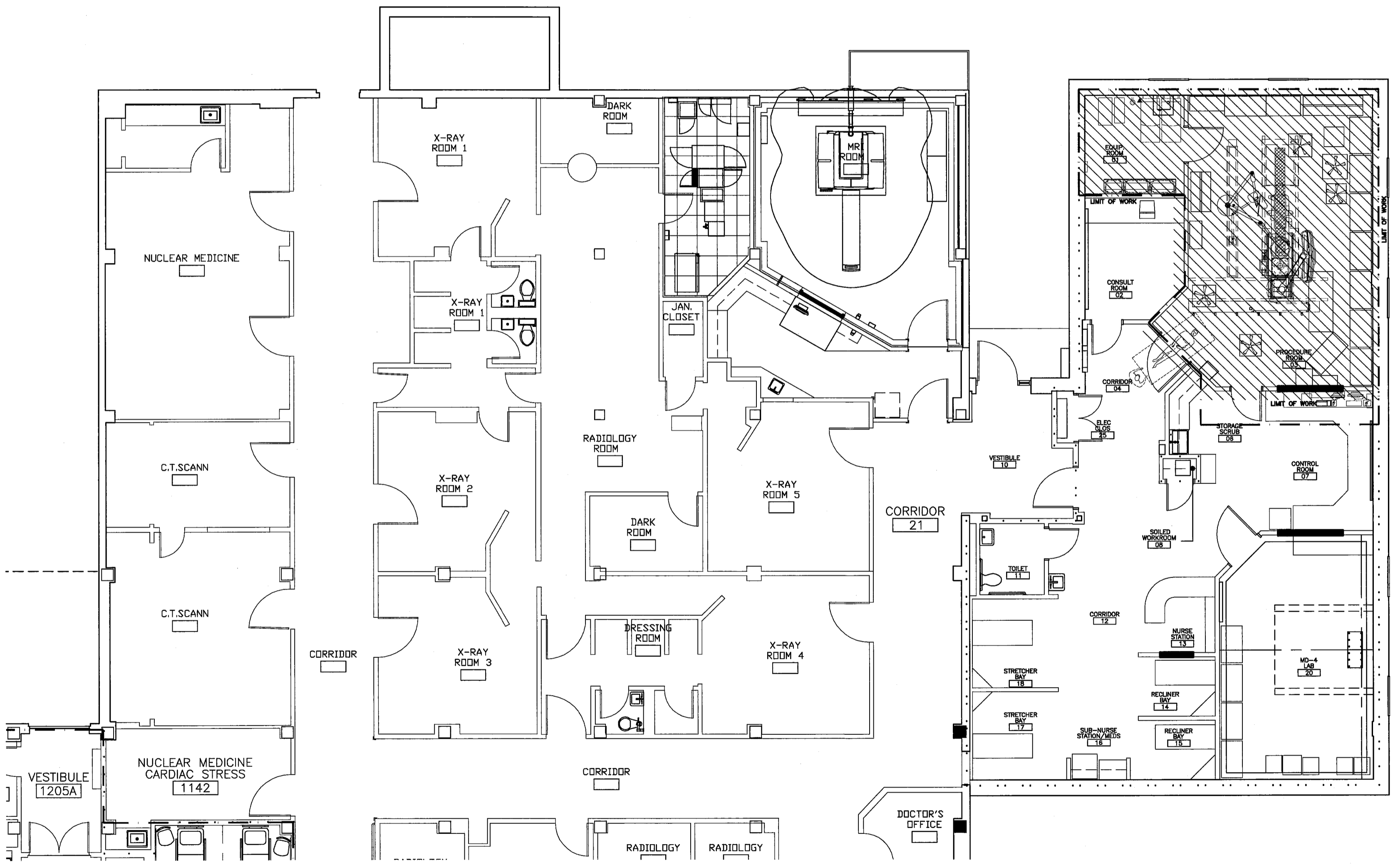
# INTERVENTIONAL RADIOLOGY EQUIPMENT REPLACEMENT

144 Fore Street/P.O. Box 618  
Portland, Maine 04104  
tel. (207) 772-3846  
fax. (207) 772-1070  
www.smidtinc.com

ARCHITECTURE  
ENGINEERING  
PLANNING  
INTERIOR DESIGN  
COMMISSIONING



**PROJECT LOCATION**



**SCOPE OF WORK:**

THIS PROJECT REPLACES AN OUTDATED IMAGING MACHINE WITH A NEW SIEMENS ARTIS ZEE CEILING HUNG IMAGING UNIT. SCOPE OF WORK INCLUDES A NEW CEILING, POWER & DATA SUPPLY, MINOR MECHANICAL WORK TO SUPPORT THE NEW PIECE OF IMAGING EQUIPMENT, NEW CABINET, PAINT AND ACCENT FLOORING. ALL WORK IS WITHIN THE EXISTING IMAGING ROOM & ALL WALLS. CORRIDORS AND EGRESS PATHS WILL NOT BE DISTURBED.

**APPLICABLE CODES**  
THIS PROJECT WAS DESIGNED ACCORDING TO THE FOLLOWING CODES:

- FIRE:** NFPA INCLUDING 101 LIFE SAFETY CODE, 2009 EDITION
- BUILDING:** IBC BUILDING CODE, 2009 EDITION
- ACCESSIBILITY:** ADA, ACCESSABILITY GUIDELINES FOR BUILDINGS AND FACILITIES 2010 EDITION.
- MECHANICAL:** 2009 INTERNATIONAL MECHANICAL CODE
- PLUMBING:** 2010 MAINE STATE PLUMBING CODE/2000 UNIFORM PLUMBING CODE (INTERNAL PLUMBING)
- ELECTRICAL:** 2008 NATIONAL ELECTRIC CODE  
2009 INTERNATIONAL ENERGY CONSERVATION CODE

**GENERAL NOTES:**

1. DO NOT SCALE THE DRAWINGS.
2. FIELD VERIFY ALL DIMENSIONS AND LAYOUT PRIOR TO PROCEEDING WITH WORK. NOTIFY ARCHITECT IN WRITING OF ANY DISCREPANCIES OR INCONSISTENCIES. FAILURE TO REPORT ANY DISCREPANCIES WITHIN THESE CONSTRUCTION DOCUMENTS TO THE ARCHITECT WILL NOT BE GROUNDS FOR ADDITIONAL COST OR CHANGE ORDERS.
3. "PROVIDE" MEANS "FURNISH AND INSTALL".
4. THE CONTRACTOR SHALL BE RESPONSIBLE FOR PROVIDING ALL MATERIALS, AND WORKMANSHIP IN ACCORDANCE WITH FEDERAL, STATE, CITY AND LOCAL BUILDING CODES AND THEIR REQUIREMENTS.
5. THE CONTRACTOR AND ALL TRADES SHALL NOTE REQUIREMENTS OF "GENERAL NOTES" ON ALL SHEETS.
6. REFER TO LARGE SCALE PLANS FOR PARTITION TYPES AND DIMENSIONS IN AREAS WHICH ARE DETAILED AT A LARGER SCALE.
7. EACH TRADE TO PROVIDE SMOKE OR FIRE SEALANT AT PENETRATIONS AS REQUIRED FOR WALL TYPE. ALL SEALANT, FIRE STOPPING, AND SMOKE STOPPING ASSEMBLIES SHALL BE U.L. RATED.
8. DIMENSIONS ARE FACE OF CONCRETE, FACE OF MASONRY, AND CENTERLINE OF INTERIOR STUD PARTITIONS, EXTERIOR STUD PARTITIONS ARE DIMENSIONED TO EXTERIOR FACE OF STUD, UNLESS INDICATED OTHERWISE.
9. REFER TO ALL CONSTRUCTION DOCUMENTS FOR REQUIREMENTS WHICH MAY AFFECT THE WORK AND COORDINATE SAME.
10. REFERENCE DETAILS AND ENLARGED PLANS FOR ADDITIONAL DIMENSIONAL INFORMATION.

**DRAWING LIST**

| GENERAL |  |
|---------|--|
| G1001   | COVER SHEET  |
| AE100   | DEMO PLAN, FLOOR PLAN, REFLECTED CEILING PLAN AND SCHEDULE |
| AE210   | DETAILS & INTERIOR ELEVATIONS                              |
| SF101   | FRAMING PLAN AND DETAILS                                   |
| M001    | LEGEND AND ABBREVIATIONS                                   |
| M002    | MECHANICAL SPECIFICATIONS                                  |
| M-100   | HVAC FLOOR PLANS   |
| M-101   | HVAC ROOF PLANS  |
| M-601   | SCHEDULES AND DETAILS                                      |
| PL100   | MED GAS PIPING AND FLOOR PLANS                             |
| E001    | LEGEND AND GENERAL NOTES                                   |
| E002    | ELECTRICAL SPECIFICATIONS SHEET 1                          |
| E003    | ELECTRICAL SPECIFICATIONS SHEET 2                          |
| E-100   | ELECTRICAL PLANS   |
| E-101   | ELECTRICAL ROOF PLANS                                      |
| Q001    | VENDOR EQUIPMENT DRAWINGS, SHEET 1                         |
| Q002    | VENDOR EQUIPMENT DRAWINGS, SHEET 2                         |
| Q003    | VENDOR EQUIPMENT DRAWINGS, SHEET 3                         |

| GRID LOCATION | TITLE               |
|---------------|---------------------|
| SCALE         | REFERENCE SHEET     |
|               | DRAWING TITLE BLOCK |
| ◆             | LEVEL LINE          |
| △             | REVISION            |
| AS04G         | DOOR NUMBER         |
| LOBBY         | ROOM NAME           |
| A153          | ROOM NUMBER         |

|     |                |
|-----|----------------|
| D11 | SYMBOLS LEGEND |
| NTS |                |

**MERCY HOSPITAL  
EQUIPMENT REPLACEMENT  
PORTLAND, ME**  
**ISSUED FOR CONSTRUCTION  
9-12-12**

| REV | DESCRIPTION             | DATE    | CURRENT ISSUE STATUS |
|-----|-------------------------|---------|----------------------|
| 0   | ISSUED FOR CONSTRUCTION | 9-12-12 |                      |

GRAPHIC SCALE:  
0" 1"

SCALE: AS INDICATED

PROJECT MANAGER: KD  
JC/DRAWN BY: MDR  
A/E OF RECORD: KD  
CAD FILE: G1001-12076  
PROJECT NO: 12076  
DATE:  
SHEET TITLE:  
**COVER SHEET**

SHEET No.  
**G1001**  
© COPYRIGHT 2008 SMRT INC.

**A3** SCOPE OF WORK  
1/4"=1'-0"