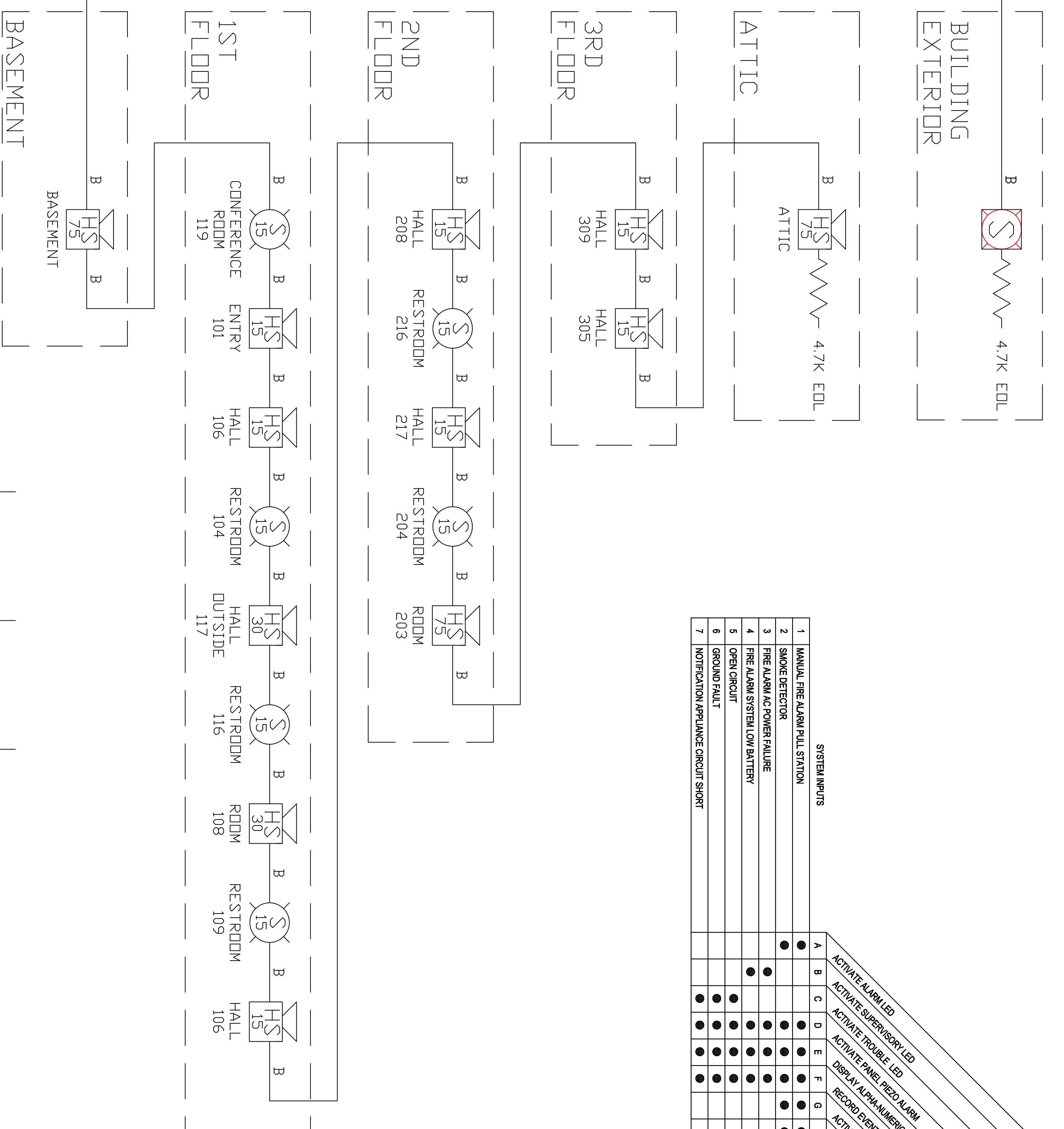
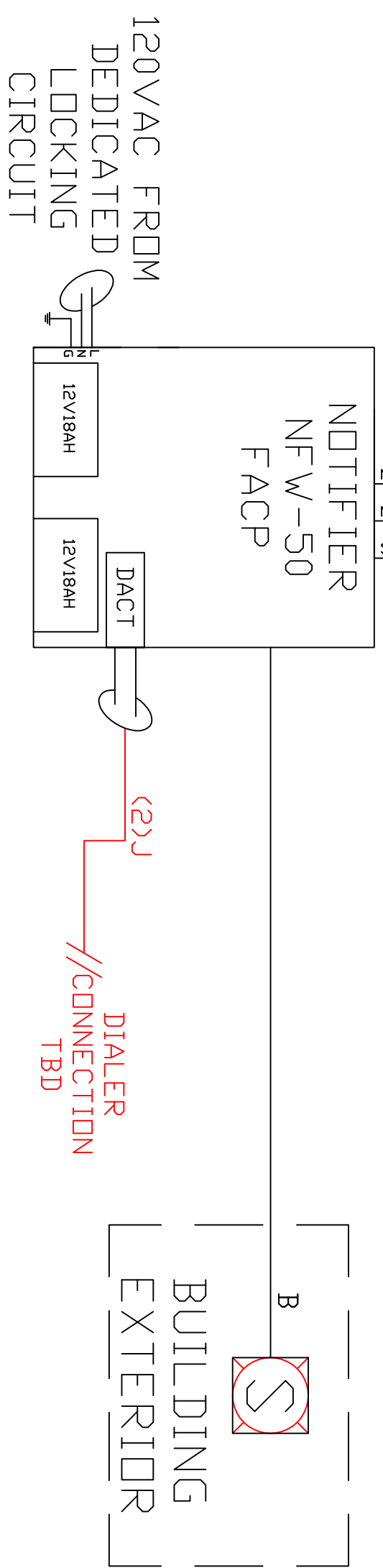


IMPORTANT!  
WIRING CONNECTIONS  
MUST HAVE CORRECT  
POLARITY.

\*Important! Securing  
Screw MUST be  
Installed in top of  
Device on Exceder  
services HSR and STR  
Audio visuals.

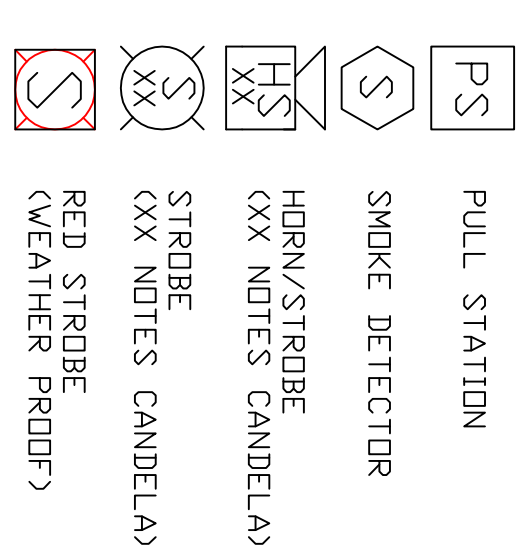


ADDR. 01	ADDR. 02	ADDR. 03	ADDR. 04	ADDR. 05	ADDR. 06
ABOVE VESTIBULE ENTRANCE	REAR EXIT FIRST FLOOR	REAR EXIT FIRST FLOOR	HALL BY STAIRS SECOND FLOOR	HALL BY STAIRS THIRD FLOOR	ATTIC

SYSTEM INPUTS	SYSTEM OUTPUTS										
	A	B	C	D	E	F	G	H	I	J	K
1 MANUAL FIRE ALARM PULL STATION											
2 SMOKE DETECTOR											
3 FIRE ALARM AC POWER FAILURE											
4 FIRE ALARM SYSTEM LOW BATTERY											
5 OPEN CIRCUIT											
6 GROUND FAULT											
7 NOTIFICATION APPLIANCE CIRCUIT SHORT											

Important! Duplicate Addresses on devices of different style is NOT an error in design or printing. All electronic devices MUST be placed in a heated room with temperature above 32 degrees. Never run wires parallel to any other wiring. Make sure to always run cables in separate raceways. Fire alarm wiring can emit noise that may affect other devices. Shielded cable can be used if cable is run near sensitive equipment.

LEGEND



DEVICE MOUNTING HEIGHTS:  
PULL STATIONS @ 48 INCHES  
NOTIFICATION DEVICES @ 80 INCHES

This drawing is a typical device layout, wiring is shown diagrammatically only. This drawing has been provided as an example ONLY. Riser does not necessarily indicate all devices and appliances. See floor plans and specification for location and quantities. The purchaser must accurately layout the initiating and notification devices in their proper zones/circuit. Note: All signal circuits have a 25 amp load limitation and a combined load limitation of 30 amps or 6.0 amps if XRM-24 is added to the panel. There can be 4 class B nac circuits or 2 class A nac circuits. REMOTE power supply has a 3.0 amps limitation per circuit and an 8.0 amp combined limitation for all 4 circuits. (See chart below for current vs. candle rating)

Room Size	Candela Rating	Load (amps)
20' x 20'	15 cd	0.08 amps
28' x 28'	30 cd	0.10 amps
45' x 45'	75 cd	0.15 amps
54' x 54'	110 cd	0.20 amps

A	1 PR #12 AWG TWISTED-PAIR UNSHIELDED CABLE FPL
A	GENESIS 4515, BELDEN 6020UL (Up to 10,000 ft)
A	1 PR #14 AWG TWISTED-PAIR UNSHIELDED CABLE FPL
A	GENESIS 4513, BELDEN 6120UL (Up to 8,000 ft)
A	1 PR #16 AWG TWISTED-PAIR UNSHIELDED CABLE FPL
A	GENESIS 4511, BELDEN 6220UL (Up to 4,500 ft)
B	1 PR #12 AWG FPL CABLE
D	1 PR #14 AWG FPL CABLE
E	1 PR #16 AWG FPL CABLE
F	2c #12 AWG CABLE
G	2c #14 AWG CABLE
H	1 PR #16 AWG TWISTED-PAIR SHIELDED CABLE FPL
H	1 PR #20 AWG SOLID COPPER UNSHIELDED PLENUM RATED
J	1 CAT5 CABLE
REVISION 2	DATE:
REVISION 1	DATE:
REVISION 0	DATE: 09/10/2013

SYSTEM WIRING RISER

PROJECT NAME	SCALE NTS
MERCY HOSPITAL MORRISON HOUSE	BY: JRS
148 STATE STREET	CK BY:
PORTLAND, ME 04101	SAVED AS:

2257 BROADWAY, SD, PORTLAND, MAINE

Prepared for Tomorrow, Delivered Today  
**NORRIS inc**