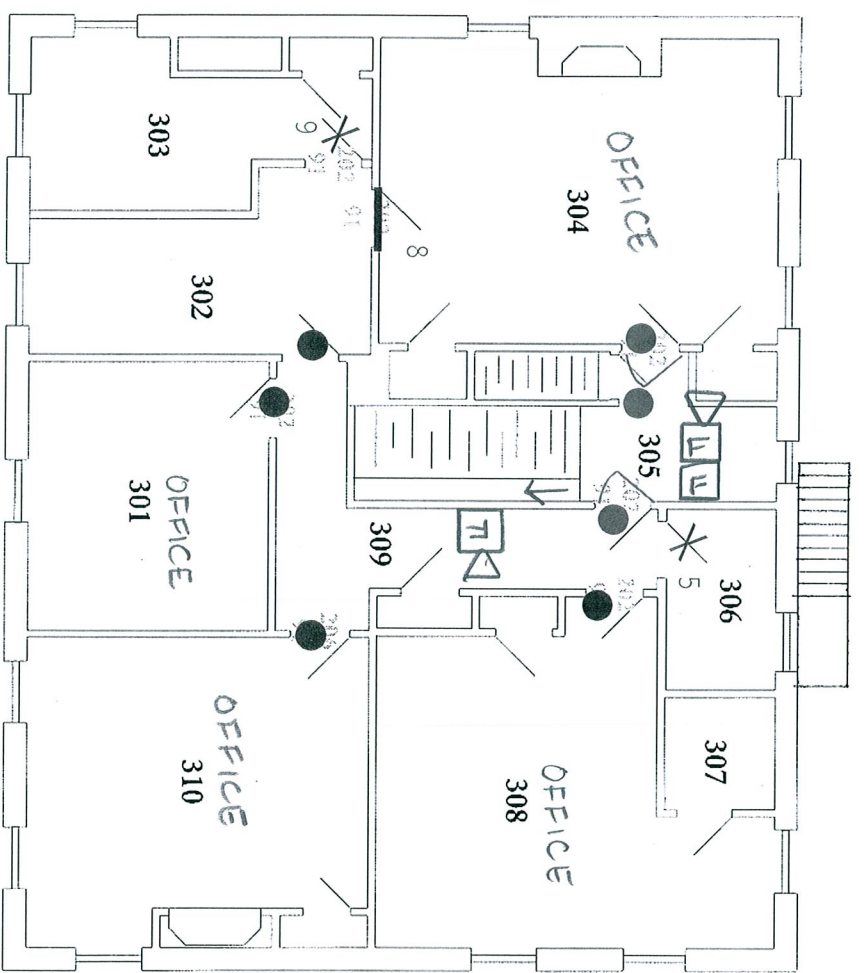


- KEY
- DOOR MUST HAVE CLOSER
 - 1 HR. RATED DOOR W/ CLOSER. DOOR MUST SWING IN DIRECTION OF TRAVEL

keyed notes:
5,8,9



MERCY HOSPITAL
MORRISON HOUSE: 148 STATE ST.

THIRD FLOOR

SCALE: 1/8" = 1'-0"

FA3 - Third Floor