

CODE REVIEW

MUBEC – MAINE UNIFORM BUILDING AND ENERGY CODE
 2009 INTERNATIONAL BUILDING CODE,
 2009 INTERNATIONAL ENERGY CONSERVATION CODE
 2009 NFPA 101 LIFE SAFETY CODE, NFPA 5000
 2009 AMERICANS WITH DISABILITY ACT
 TOWN OF WINDHAM, MAINE ORDINANCES

BUILDING IS CURRENTLY APPROVED AS A SINGLE TENANT w/
 ASSEMBLY AND BUSINESS OCCUPANCY

THE PROPOSED USE IS A MUTLI TENANT BUILDING w/:
 ASSEMBLY (FUNERAL PARLOR) – A3
 BUSINESS AREA – B
 RESIDENTIAL – R3

IBC BUILDING CODE STUDY:

USE AND OCCUPANCY CLASSIFICATIONS

1ST FLOOR – TOTAL AREA = 2,619 S.F.
 USE GROUP A-3 – FUNERAL PARLOR = 2,000 S.F.
 2nd FLOOR – TOTAL AREA = 2186 S.F.
 USE GROUP B – BUSINESS OFFICES = 1216 S.F.
 USE GROUP R-3 – RESIDENTIAL = 970 S.F.

CHAPTER 10 – OCCUPANT LOAD:

AREA:	PER TABLE 1004.1.1	PERSONS:
1st FLOOR –		
USE GROUP A-3	2000 SF	SF / 7 NET 285
2nd FLOOR –		
USE GROUP B	1216 S.F.	SF/ 100 GROSS 12
USE GROUP R-3	970 S.F.	SF/ 200 GROSS 5

CHAPTER 10 – MEANS OF EGRESS:

MAIN LEVEL – MINIMUM NUMBER OF EXITS
 (2) REQ'D (3) PROVIDED
 EXIT ACCESS – (2) FRONT –MAIN EXITS
 (1) REAR DOOR

TOTAL EGRESS WIDTH REQ'D =
 1ST FLOOR = 285*0.2 = 57in.
 2ND FLOOR (BUSINESS) = 12*0.2 = 2.4in
 (RESIDENTIAL) = 5*0.2 = 1.0in

TOTAL NUMBER OF DOORS REQ'D = 60.4/36 = 1.67
 PANIC HARDWARE IS REQUIRED AT LOCKABLE EXITS

COMMON PATH = 20FT ANY NUMBER, 75FT < 75 PERSONS
 TRAVEL DISTANCE = 250 FT (TABLE 1016.1)
 DEAD END CORRIDOR = 20FT

ILLUMINATION OF MEANS OF EGRESS – REQ'D PER SECT 7.9

CHAPTER 8 – INTERIOR FINISHES –

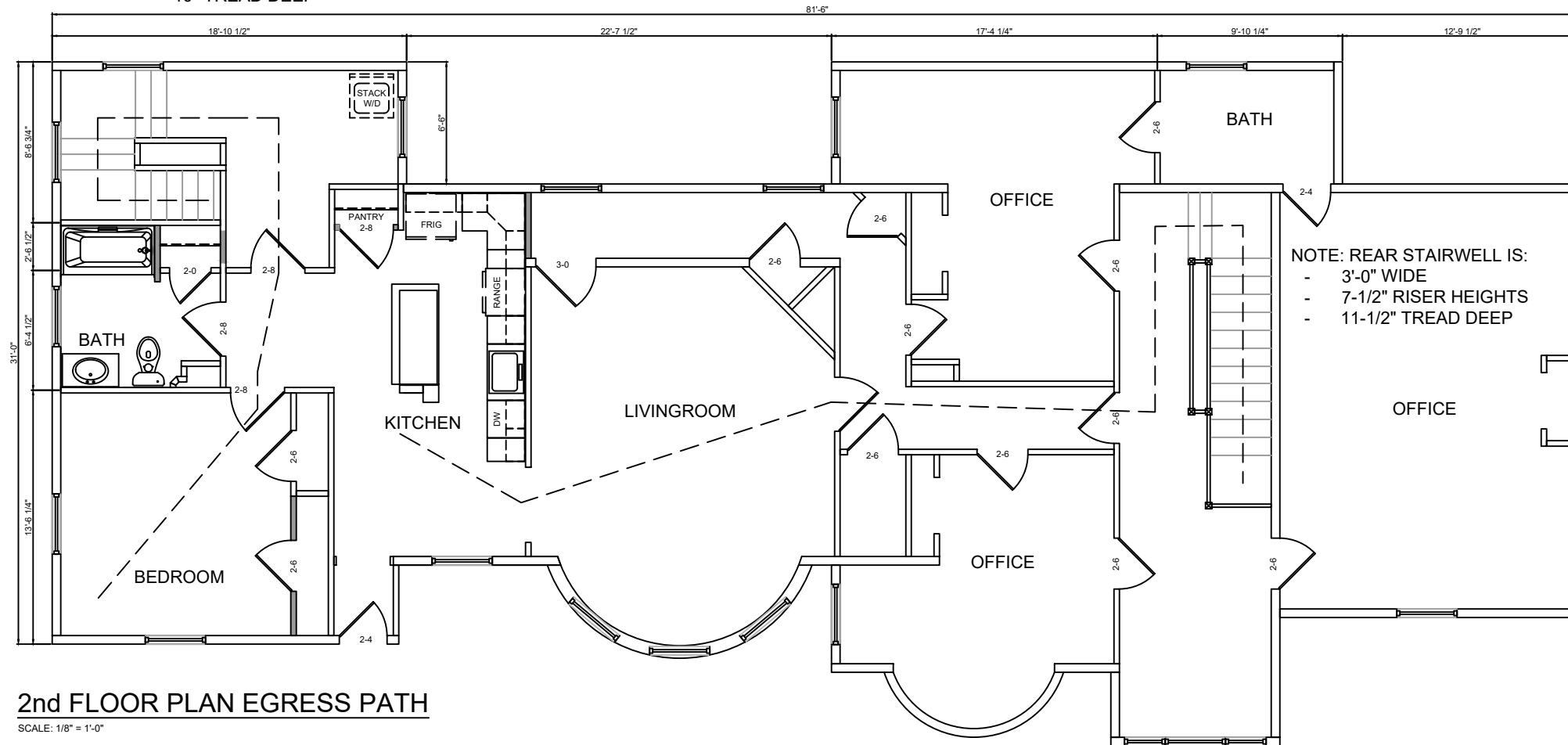
INTERIOR FINISHES AT WALLS AND CEILINGS SHALL BE
 CLASS A OR B

CHAPTER 9 – DETECTION AND EXTINGUISHMENT –

SPRINKLER SYSTEM – NFPA-13 REQUIRED (PER CODE SECTION 903.2.9(1))
 FIRE PROTECTION – SMOKE ALARM SYSTEM
 FIRE ALARM AND NOTIFICATION – AS REQUIRED PER CITY OF PORTLAND

NOTE: REAR STAIRWELL IS:

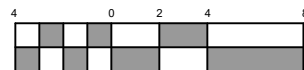
- 2'-6" WIDE
- 7-1/2" RISER HEIGHTS
- 10" TREAD DEEP



2nd FLOOR PLAN EGRESS PATH

SCALE: 1/8" = 1'-0"

GRAPHIC SCALE



SCALE: 1/8" = 1'-0"

DATE ISSUED 4/26/17

JASON LANDRY CONSULTING, LLC

17 NASON ROAD GORHAM, MAINE 04038 207-632-3111

ADAM WALKER
 172 STATE STREET
 PORTLAND, MAINE

TITLE:
2nd FLOOR EGRESS PLAN

DATE: 3/24/17 DRAWN BY: J.JL DRAWING NUMBER:

SCALE: as noted PROJ NO: 2017-027 LS-2