

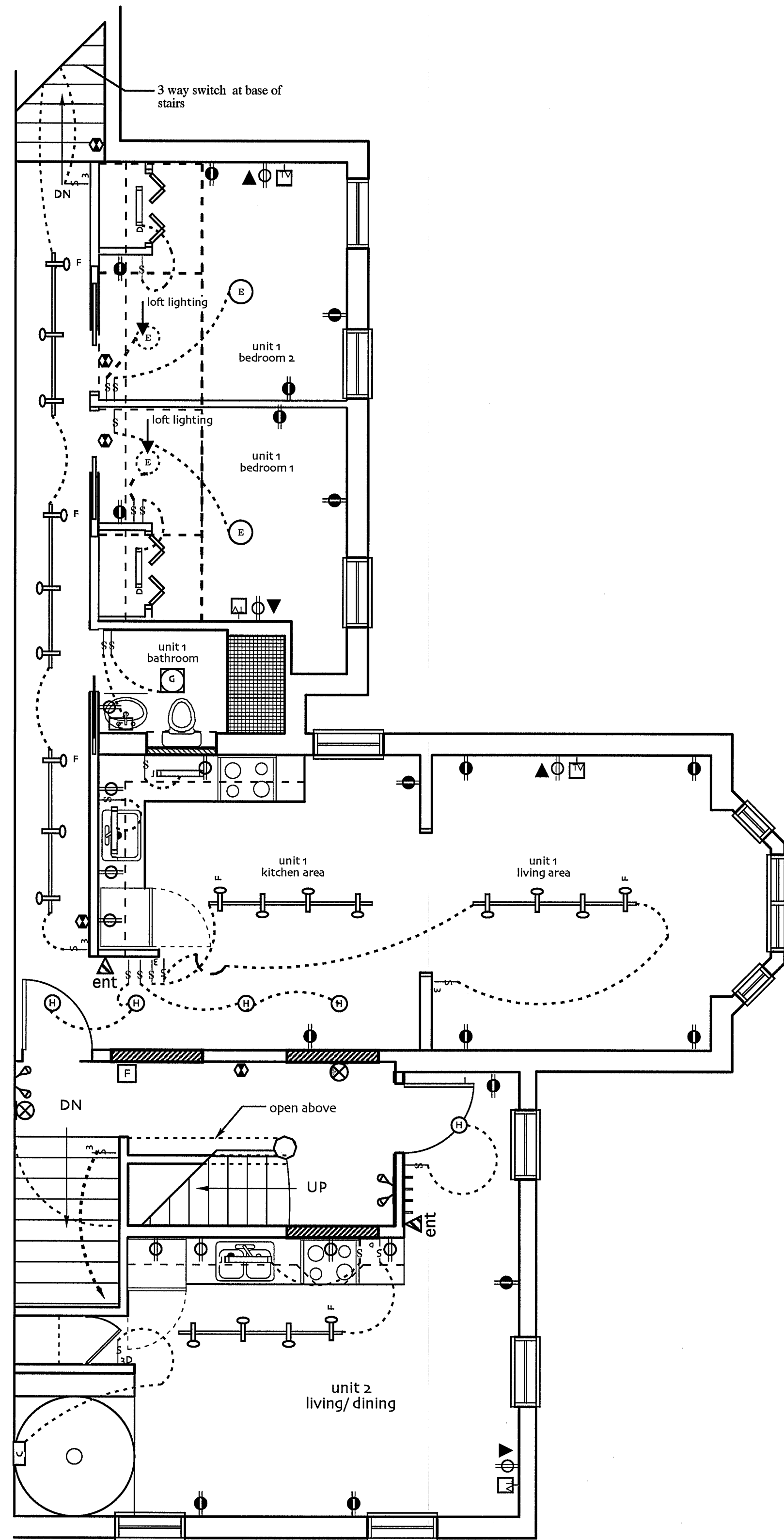
Electrical drawings reviewed by:
 Thomas Engineering 175 Carlson Way
 Westbrook ME 04077 207 878 4407

ELECTRICAL NOTES

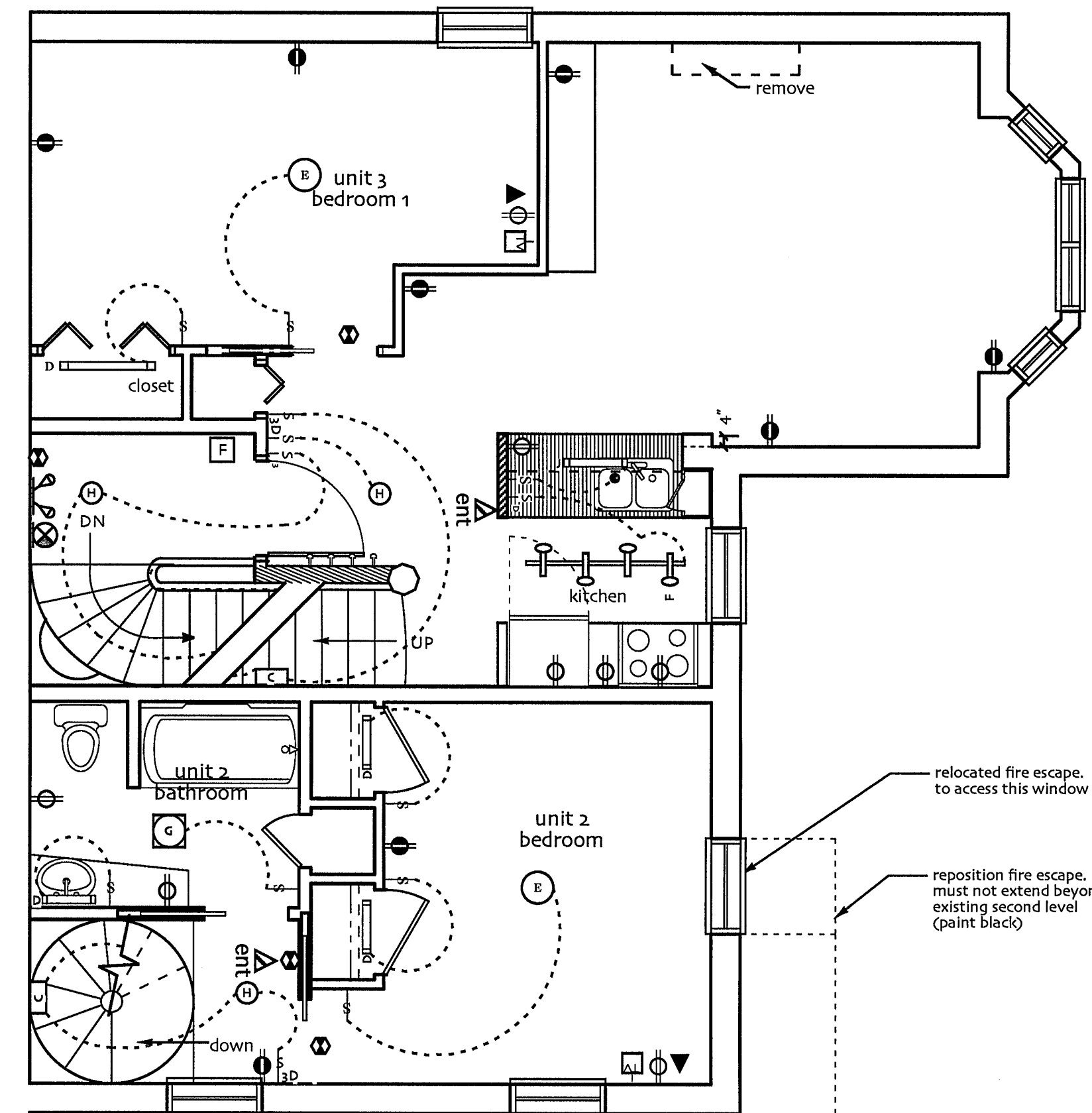
- Contractor is responsible for installation acceptable to all city, state and national codes.
- Contractor is responsible for obtaining all applicable permits.
- All outlets within 6' of any water tap shall be ground fault protected.
- Review all appliances schedules, mechanical drawings and specifications for a complete understanding of the electrical requirements.
- Mounting heights :
 DUPLEX - 15" AFF min., mount horizontally at kitchen counter.
 G.F.I. DUPLEX OUTLET - At contractor's option, ground fault protection may be installed at electrical panel.
 WALL TELEPHONE JACK - Wire to telephone panel, 15" AFF max. (in bedrooms offices and phone areas)
 SWITCH LOCATION - 48" AFF max.
 EMERGENCY ALARM SYSTEM PULL - 48" AFF max.

In general, all mounting heights shall conform to ADA accessibility guidelines.

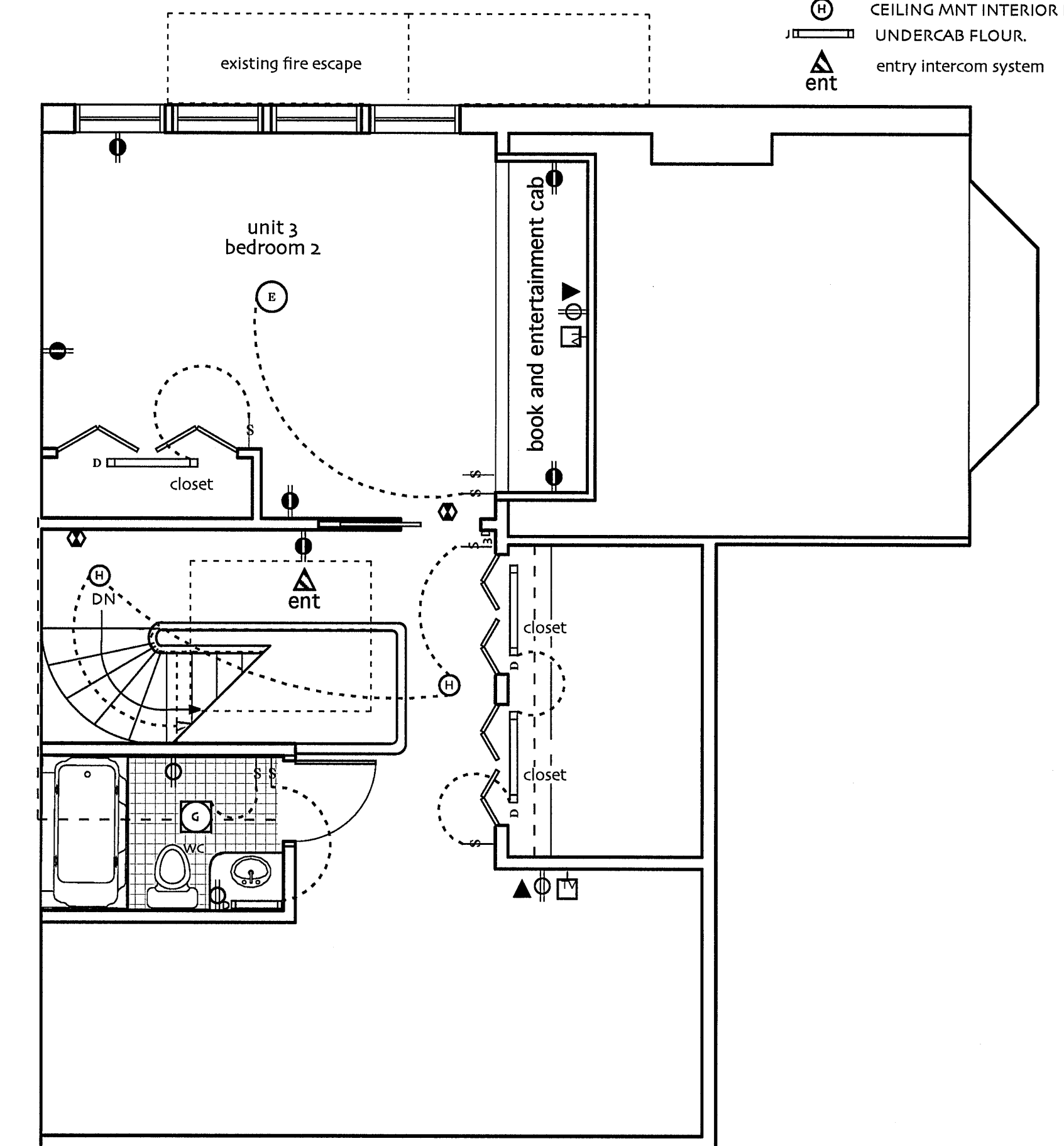
- KEY**
- EMERGENCY LIGHTING UNIT W/REMOTE HEADS AS SHOWN - MOUNTED SO TOP OF HEADS ARE 6" BELOW CEILING
 - EXIT LIGHTING UNIT - WALL OUTLET
 - SMOKE DETECTOR
 - FIRE ALARM MANUAL STATION
 - DUPLEX
 - DEDICATED
 - QUAD
 - GFCI
 - WEATHER PROTECTED
 - TV-CABLE/DUPLEX/PHONE LINES
 - SWITCH
 - 3-WAY SWITCH
 - 3-WAY SWITCH WITH DIMMER
 - MULTIPLE TELEPHONE LINES
 - RECESSED CEILING FIXT- NEW
 - RECESSED CEILING FIXT REMODEL
 - WALL MNT INTERIOR FIXTURE
 - WALL MOUNTED FLOOR, FIXTURE W/ LENSE
 - CEILING MNT INTERIOR FIXTURE
 - TRACK LIGHTS
 - CEILING MNT LIGHT W/ FAN
 - CEILING MNT INTERIOR FIXTURE UNDERCAB FLOOR.
 - entry intercom system



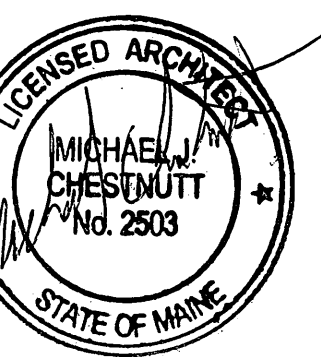
second floor plan



third floor plan



fourth floor plan



182 State Street, Portland, Maine 04102

November 10 2001
 clarifications February 1 2006

design development scale 1/4" = 1'-0"

electrical plans
 E - 1.1