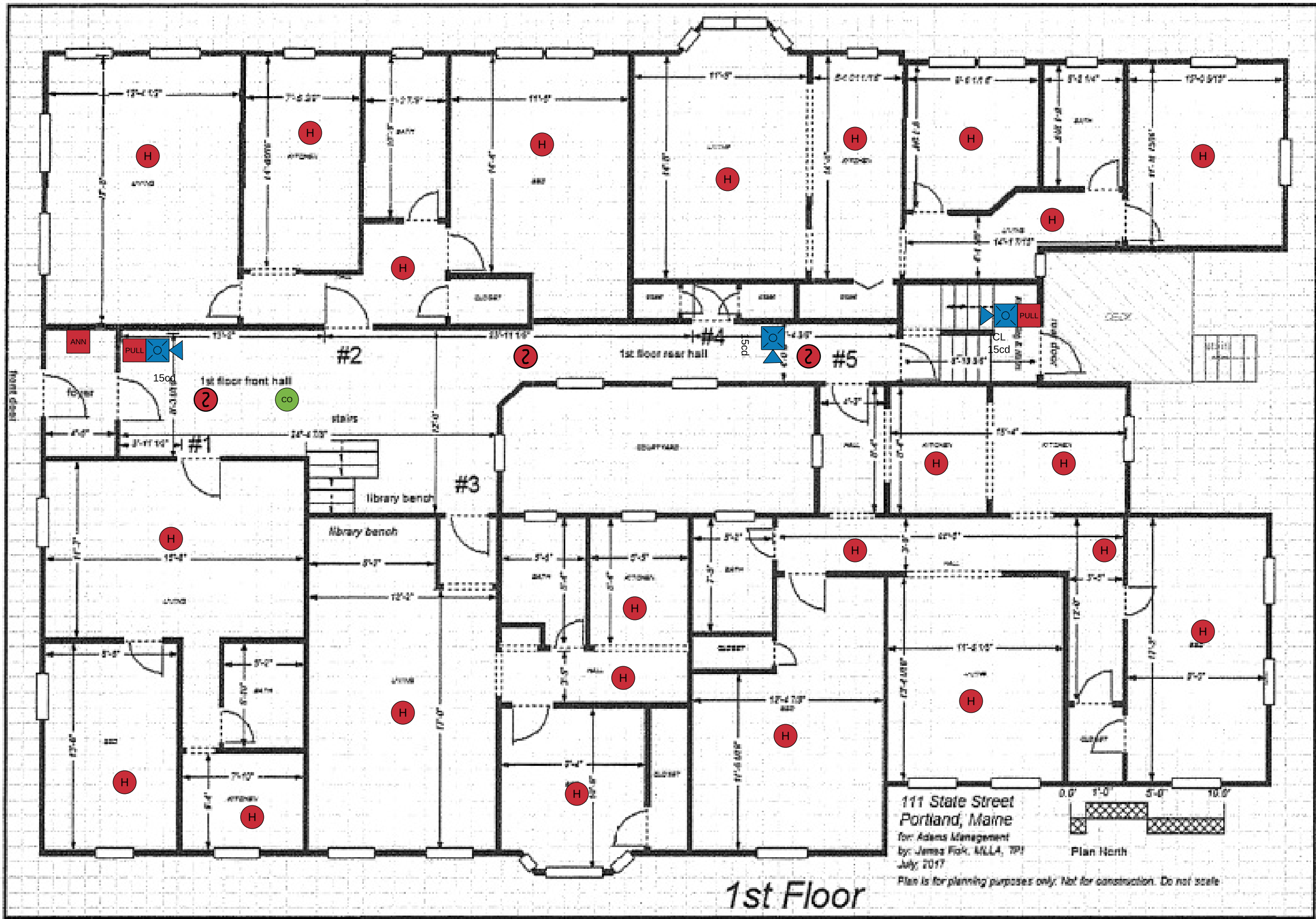



SMOKE, HEAT AND CO  
DETECTORS ARE  
WIRELESS. ALL OTHER  
DETECTORS ARE HARD  
WIRED TO THE FACP



	SINGLE INPUT MODULE		STROBE
	SOUNDER BASE	15cd	
	HEAT DETECTOR		HORN STROBE
	DUAL MODULE	15cd	
	MANUAL PULL STATION		WEATHER PROOF HORN STROBE
	CO DETECTOR	WP 75cd	
	MICRO MODULE		MINI HORN
	SMOKE DETECTOR		CEILING MOUNT HORN STROBE
	RELAY MODULE	CL 15cd	
	ISOLATOR MODULE		SPEAKER STROBE
			SPRINKLER TAMPER SWITCH
			SPRINKLER WATERFLOW SWITCH

PROTECTION PROFESSIONALS  
DATE 11/17/17  
REVISION: 1.0  
111 STATE STREET  
PORTLAND MAINE  
SCALE: NS  
SHEET: 1 1ST FLOOR  
DESIGNER:  
DOUG HANSEN



- GENERAL NOTES**
- A.) FIRE ALARM SYSTEM WIRING SHALL COMPLY WITH THE NATIONAL ELECTRIC CODE, APPLICABLE STATE AND LOCAL CODES AND SHALL BE COORDINATED WITH THE LOCAL AUTHORITY HAVING JURISDICTION.
  - B.) CAUTION; DO NOT CONNECT ANY POWER TO THE CONTROL PANEL (BATTERIES OR 120VAC) UNTIL ALL FIELD WIRING HAS BEEN TESTED.
  - C.) DO NOT INSTALL FIRE ALARM CONTROL PANEL OR ANY ADDRESSABLE DEVICES IN UNHEATED SPACE.
  - D.) DO NOT INSTALL ANY AC CURRENT CARRYING CONDUCTORS CLOSE TO OR IN THE SAME RACEWAY WITH FIRE ALARM SYSTEM CONDUCTORS.
  - E.) SOLID LINES REPRESENT CONNECTIONS MADE BY THE SYSTEM INSTALLER.
  - F.) ALL RELAYS ARE SHOWN IN NORMAL SUPERVISORY CONDITION. ALL RELAYS ARE FORM "C" TYPE.

- INSTALLATION NOTES**
- A.) SMOKE DETECTORS SHALL NOT BE MOUNTED ANY CLOSER THAN 3' FROM ANY AIR DUCT OPENINGS.
  - B.) ELEVATOR LOBBY SMOKES SHALL BE MOUNTED WITHIN 10' OF THE ELEVATOR DOOR.
  - C.) MANUAL PULL STATIONS SHALL BE MOUNTED PER ADA REQUIREMENTS: 48" AFF OR 42" AFF TO COMPLY WITH SIDE/FRONT REACH REQUIREMENTS.
  - D.) WALL MOUNTED HORN STROBES AND STROBES SHALL BE MOUNTED 6" FROM CEILING, OR 96" TO 80" AFF TO THE CENTER OF THE STROBE.
  - E.) HORN STROBES AND STROBES SHALL BE MOUNTED 15" FROM THE CORNER OF THE WALL. IF THIS IS NOT POSSIBLE, DEVICE SHALL BE CENTERED ON THAT WALL.
  - F.) CEILING MOUNTED HALLWAY DEVICES SHALL BE LOCATED IN A SYMMETRICAL MANNER DOWN THE CENTER OF THE HALLWAY WHEN POSSIBLE.

111 State Street  
Portland, Maine  
for Adams Management  
by James Fick, MLLA, TPI  
July 2017  
Plan North  
Plan is for planning purposes only. Not for construction. Do not scale

# 1st Floor