

LEGEND:

NEW WALL - STUD & GYP. BD.	
EXISTING STUD WALL	
EXISTING MASONRY WALL	
DEMO AND REMOVE	
1 HOUR DOOR W/CLOSER AND SELF-LATCHING. EXISTING DOOR FRAMES TO REMAIN. EQUIVALENT TO 1 HR. PAINT WITH INTUMESCENT PAINT	(LD)
NEW 1 HOUR DOOR & FRAME W/CLOSER AND SELF-LATCHING.	(RD)
NEW DOOR	(ND)
FIRE EXTINGUISHER	(FE)

WALLS:

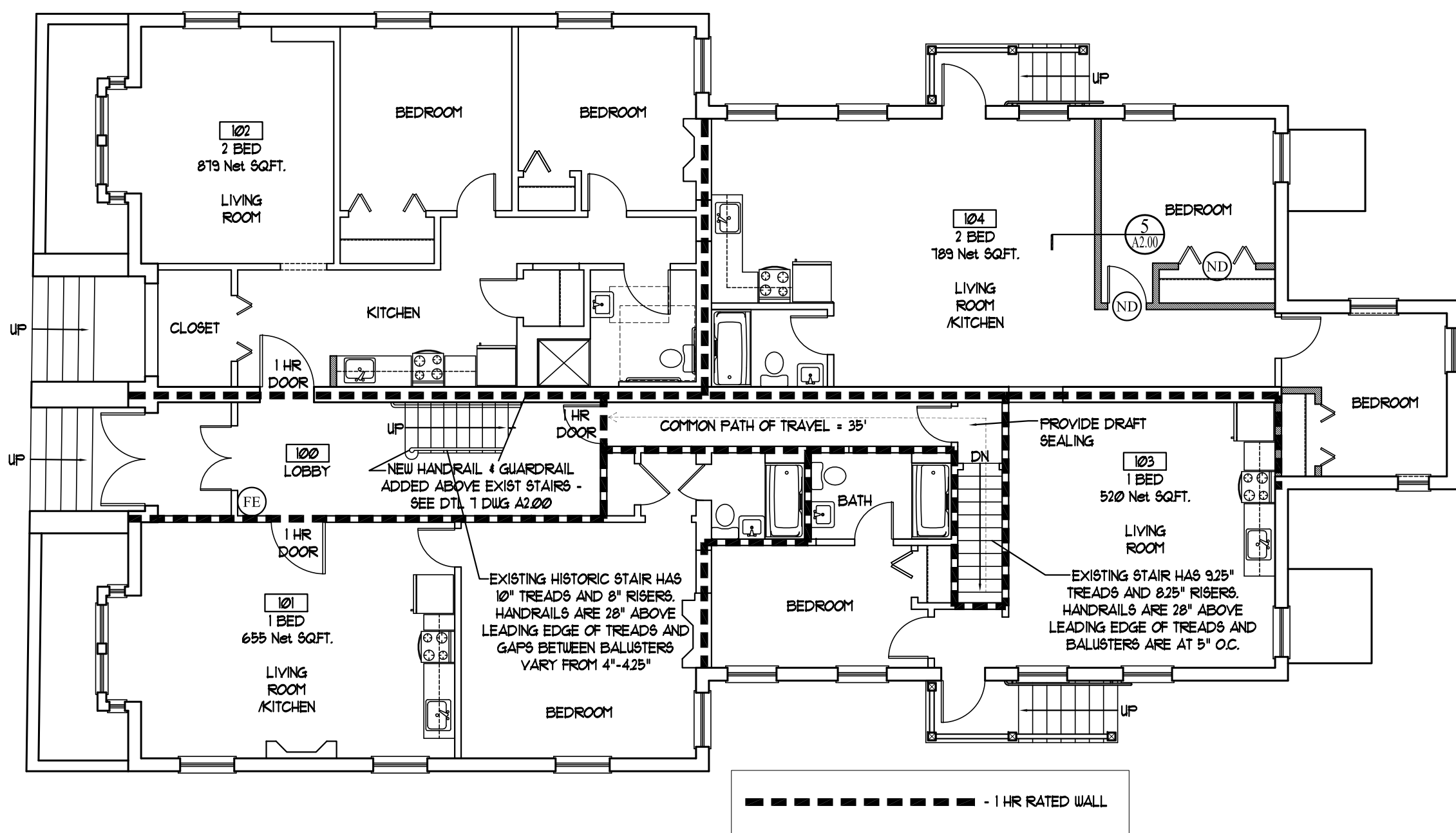
NEW WALL - WOOD STUD & GYPBD BOTH SIDES = 1 HR RATED PER UL DESIGN NO U305  
 EXISTING WALL - WOOD STUD & PLASTER BOTH SIDES = 1 HR RATED PER IBC TABLE 720.1(2)-12  
 EXISTING BRICK WALL = 1 HR RATED PER IBC TABLE 720.1(2)-1

FLOOR/CEILING ASSEMBLIES:

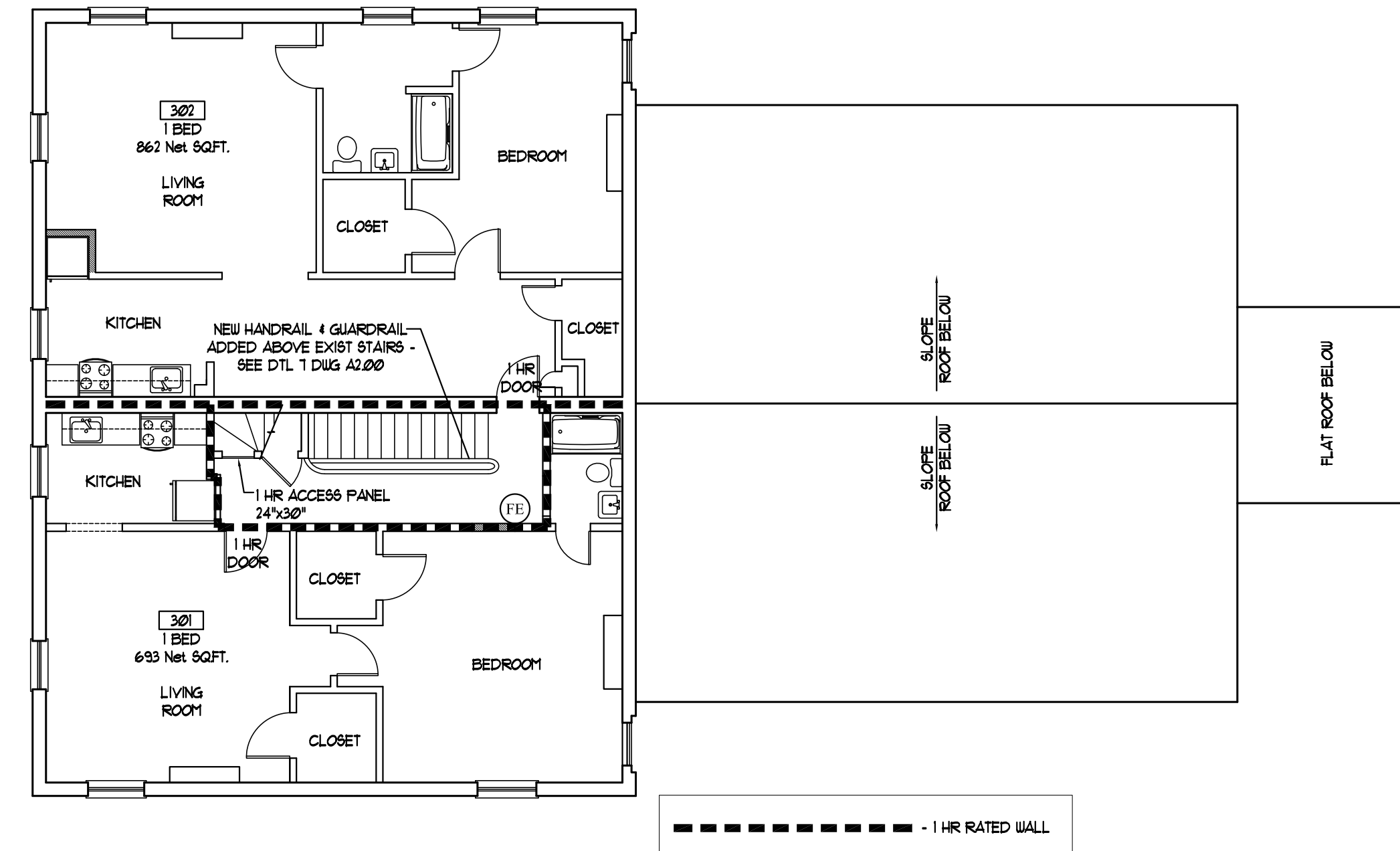
FLOOR/CEILING ASSEMBLIES BETWEEN 1st & 2nd FLOORS, 2nd & 3rd FLOORS AND BETWEEN 3rd & 4th FLOORS ARE 1 HOUR RATED ASSEMBLIES OF PLASTER ON LATH (IBC 720.1 (3) - 13).

NEW INFILL FLOORS ARE 1 HOUR RATED ASSEMBLIES PER DETAIL 6 ON DRAWING A2.00

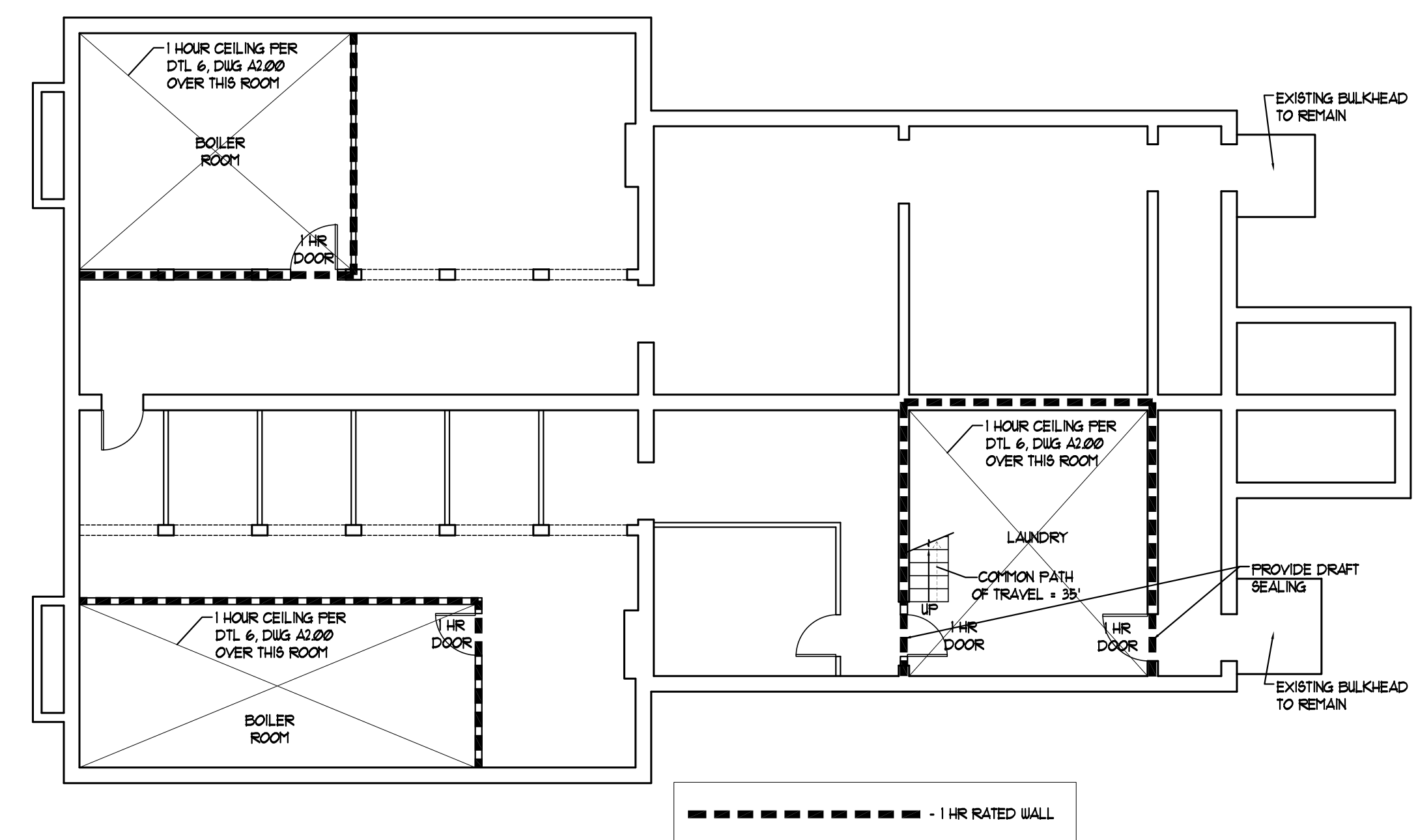
FIRST FLOOR - 3,386 GROSS SQ.FT.  
 SECOND FLOOR - 3,369 GROSS SQ.FT.  
 THIRD FLOOR - 1,840 GROSS SQ.FT.  
 TOTAL - 8,595 GROSS SQ.FT.



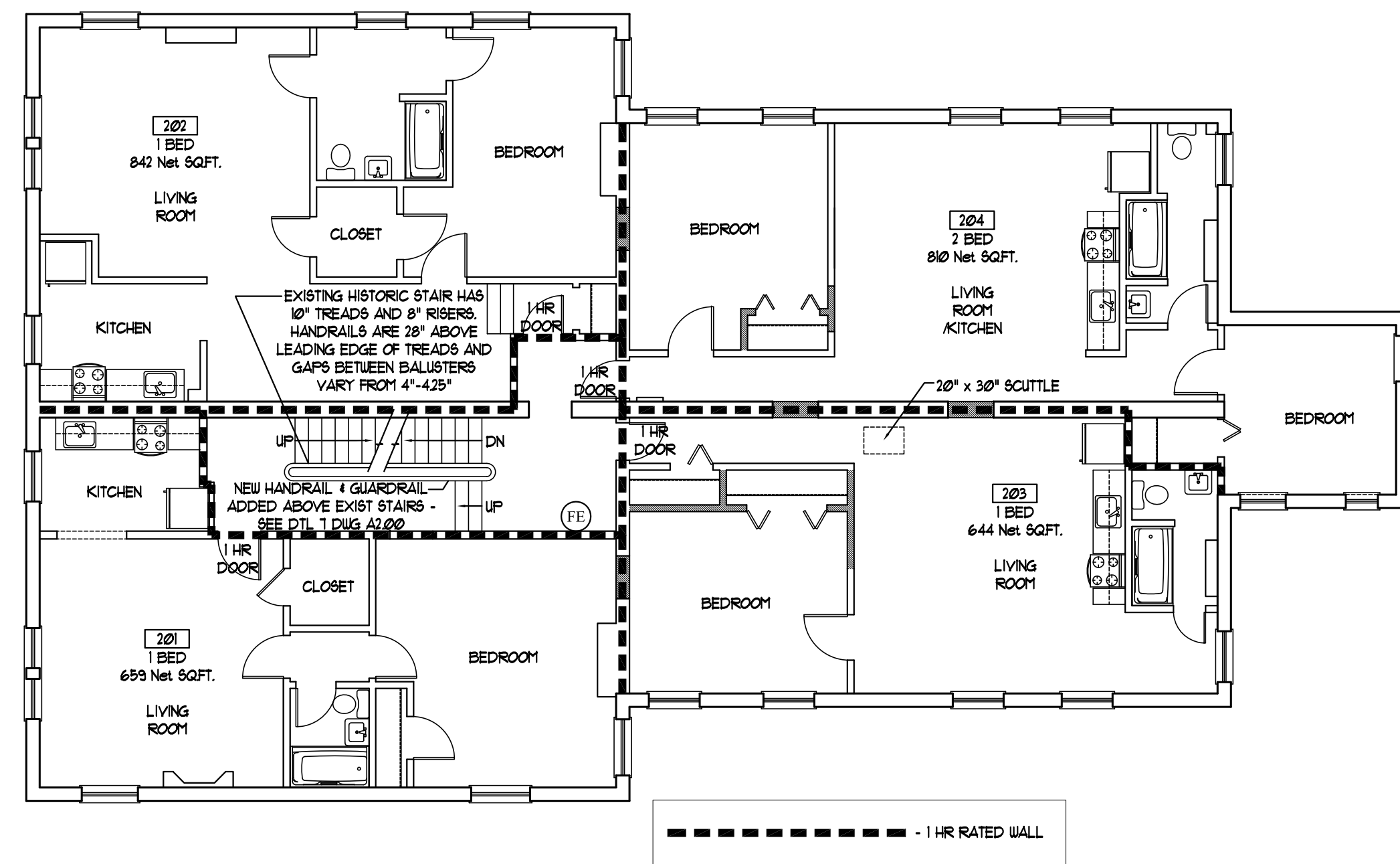
2 | PROPOSED FIRST FLOOR PLAN - 3,386 GROSS SQ.FT.  
 SCALE: 1/8"=1'-0"



4 | PROPOSED THIRD FLOOR PLAN - 1,840 GROSS SQ.FT.  
 SCALE: 1/8"=1'-0"

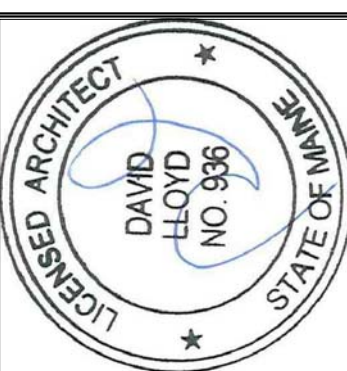
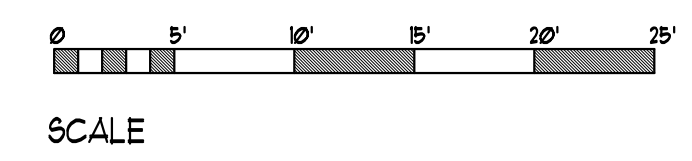
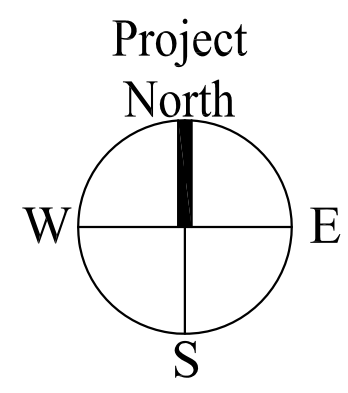


1 | PROPOSED BASEMENT PLAN - 3,386 GROSS SQ.FT.  
 SCALE: 1/8"=1'-0"



3 | PROPOSED SECOND FLOOR PLAN - 3,369 GROSS SQ.FT.  
 SCALE: 1/8"=1'-0"

NOTE:  
 FLOOR/CEILING ASSEMBLIES BETWEEN 1ST & 2ND FLOORS, 2ND & 3RD FLOORS AND BETWEEN 3RD & 4TH FLOORS ARE 1 HOUR RATED ASSEMBLIES OF PLASTER ON LATH (IBC 720.1 (3) - 13).  
 NEW INFILL FLOORS ARE 1 HOUR RATED ASSEMBLIES PER DETAIL 6 ON DRAWING A2.00



Consulting Engineer:

**ARCHETYPE** architects  
 48 Union Wharf Portland, Maine 04101  
 (207) 772-6022 Fax (207) 772-4056

Project:  
 91 STATE STREET  
 91 STATE STREET  
 PORTLAND, MAINE

Revisions:

Date: 20 May 2013  
 Scale: AS NOTED  
 PROPOSED LIFE SAFETY PLANS

A3.00