

LEGEND:

NEW WALL - STUD & GYP. BD.	
EXISTING STUD WALL	
EXISTING MASONRY WALL	
DEMO AND REMOVE	
1 HOUR DOOR W/CLOSER AND SELF-LATCHING. EXISTING DOOR FRAMES TO REMAIN. EQUIVALENT TO 1 HR. PAINT WITH INTUMESCENT PAINT	(LD)
NEW 1 HOUR DOOR & FRAME W/CLOSER AND SELF-LATCHING.	(RD)
NEW DOOR	(ND)
FIRE EXTINGUISHER	(FE)

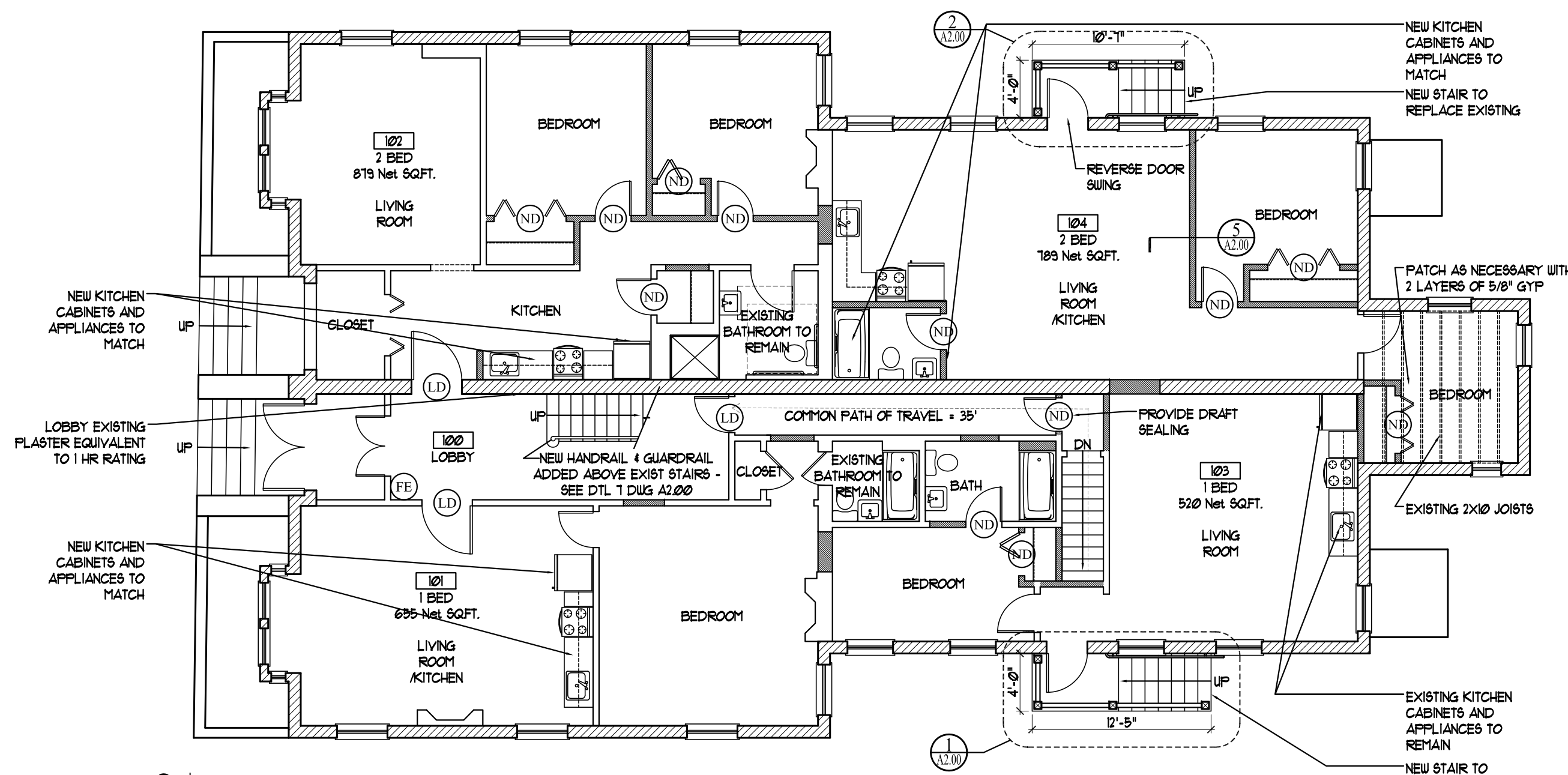
WALLS:

NEW WALL - WOOD STUD & GYPBD BOTH SIDES = 1 HR RATED PER UL DESIGN NO U305
 EXISTING WALL - WOOD STUD & PLASTER BOTH SIDES = 1 HR RATED PER IBC TABLE 720.1(2)-12
 EXISTING BRICK WALL = 1 HR RATED PER IBC TABLE 720.1(2)-1

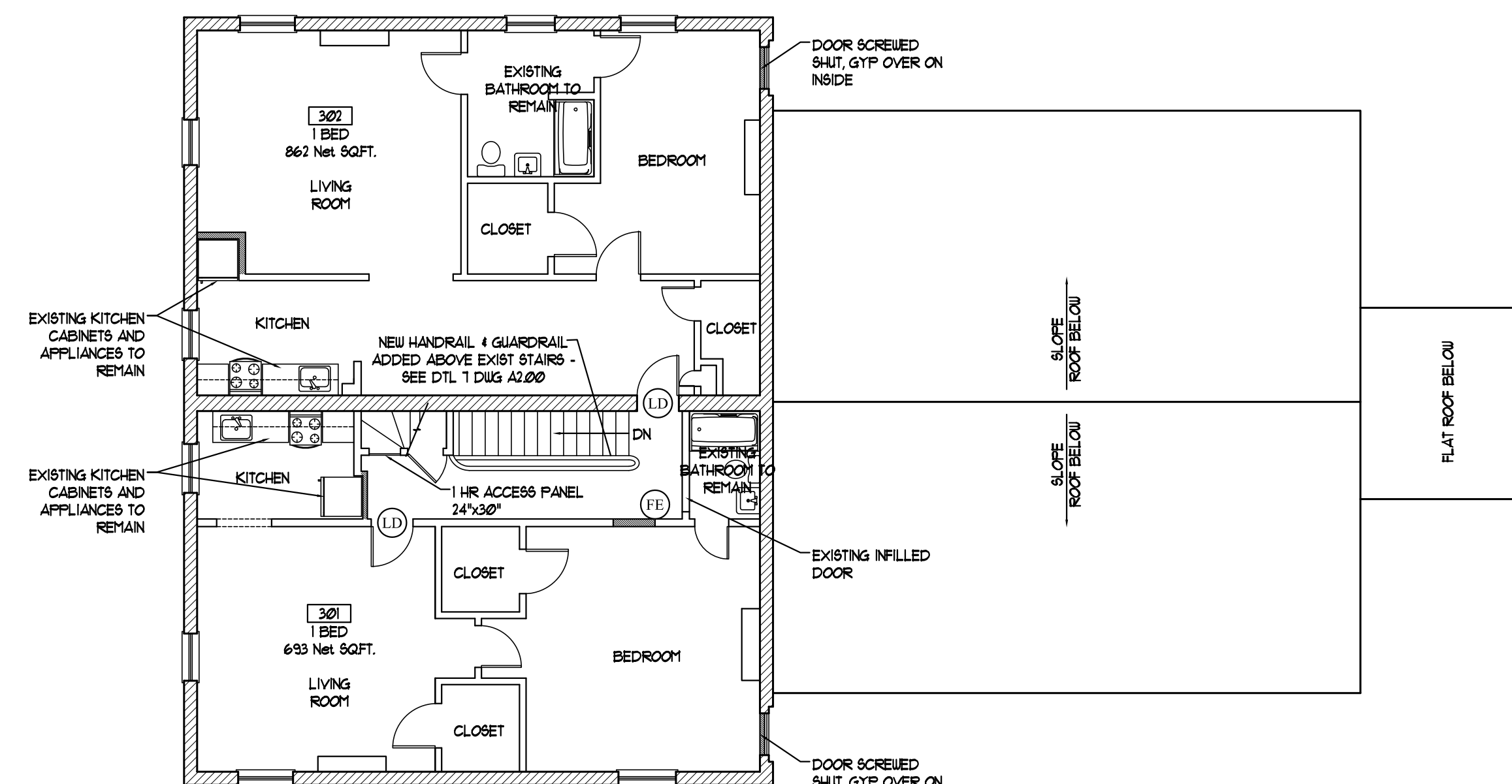
FLOOR/CEILING ASSEMBLIES:

FLOOR/CEILING ASSEMBLIES BETWEEN 1st & 2nd FLOORS, 2nd & 3rd FLOORS AND BETWEEN 3rd & 4th FLOORS ARE 1 HOUR RATED ASSEMBLIES OF PLASTER ON LATH (IBC 720.1 (3) - 13).
 NEW INFILL FLOORS ARE 1 HOUR RATED ASSEMBLIES PER DETAIL 6 ON DRAWING A2.00

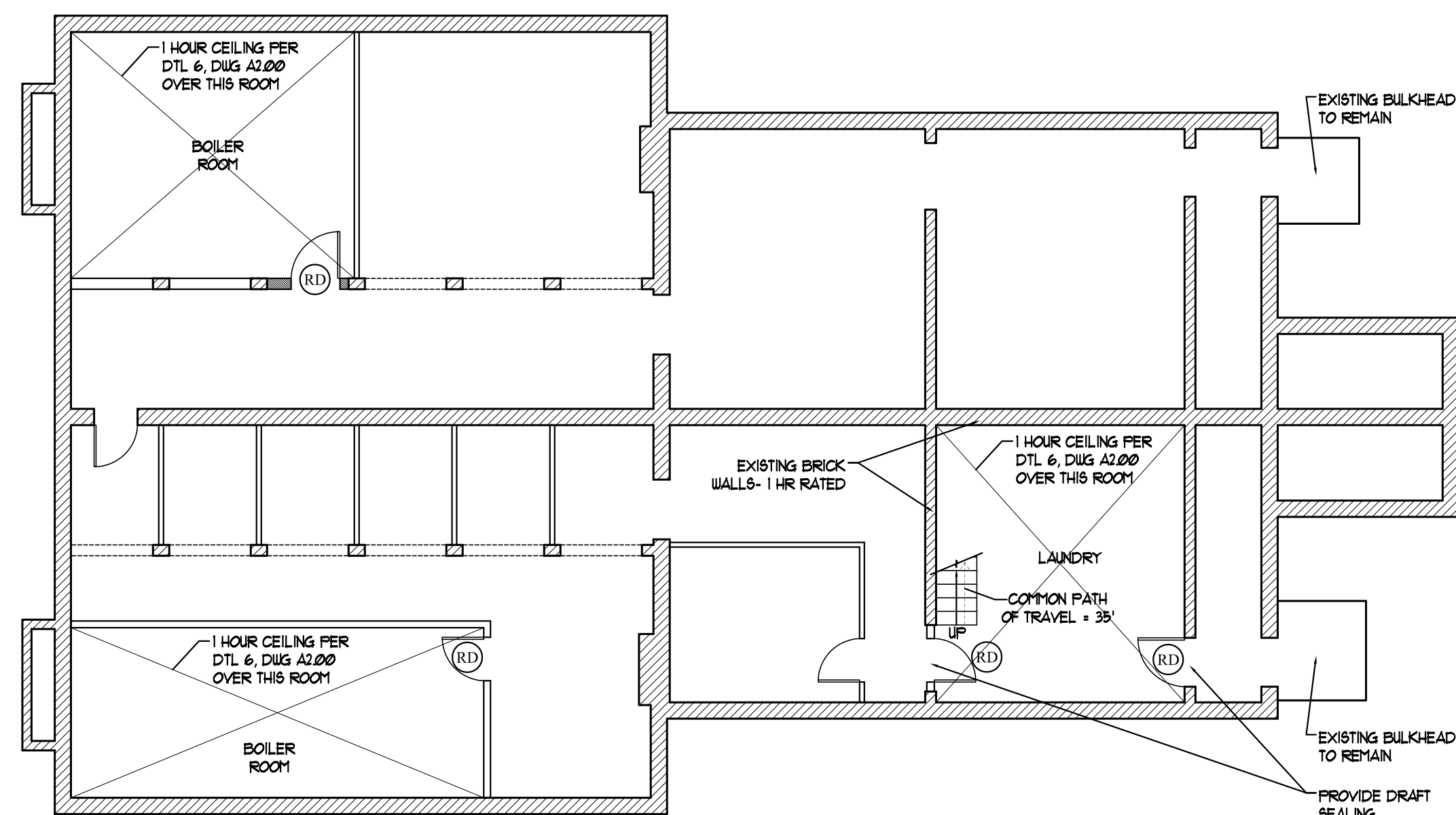
FIRST FLOOR - 3,386 GROSS SQ.FT.
 SECOND FLOOR - 3,369 GROSS SQ.FT.
 THIRD FLOOR - 1,840 GROSS SQ.FT.
 TOTAL - 8,595 GROSS SQ.FT.



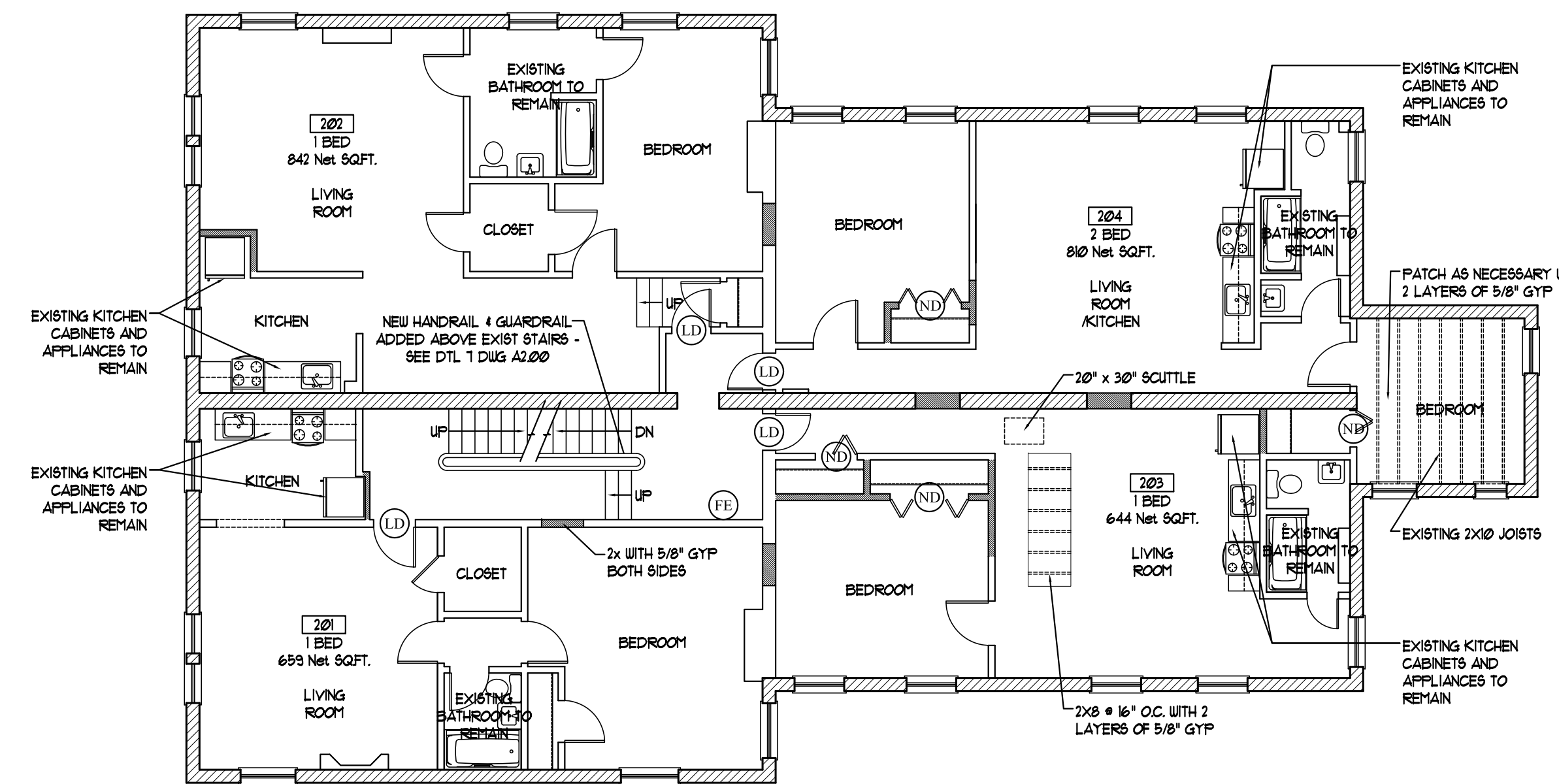
2 PROPOSED FIRST FLOOR PLAN - 3,386 GROSS SQ.FT.
 SCALE: 1/8"=1'-0"



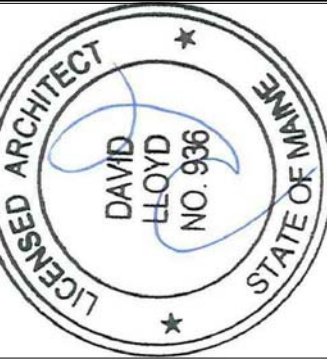
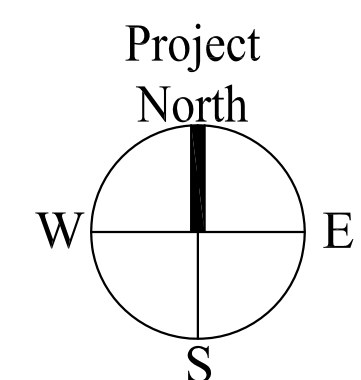
4 PROPOSED THIRD FLOOR PLAN - 1,840 GROSS SQ.FT.
 SCALE: 1/8"=1'-0"



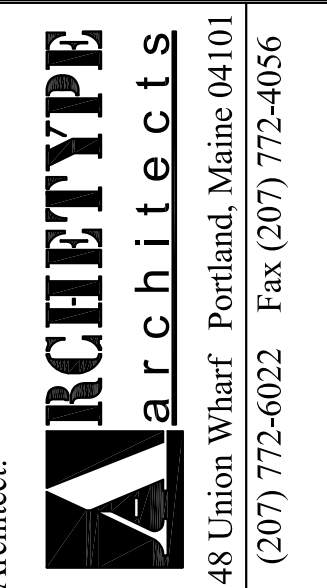
1 PROPOSED BASEMENT PLAN - 3,386 GROSS SQ.FT.
 SCALE: 1/8"=1'-0"



3 PROPOSED SECOND FLOOR PLAN - 3,369 GROSS SQ.FT.
 SCALE: 1/8"=1'-0"



Consulting Engineer:



Project: 91 STATE STREET
 91 STATE STREET
 PORTLAND, MAINE

Revisions:	
------------	--

Date: 20 May 2013
 Scale: AS NOTED
 Project: 91 STATE STREET
 91 STATE STREET
 PORTLAND, MAINE

PROPOSED FLOOR PLANS
 A1.00