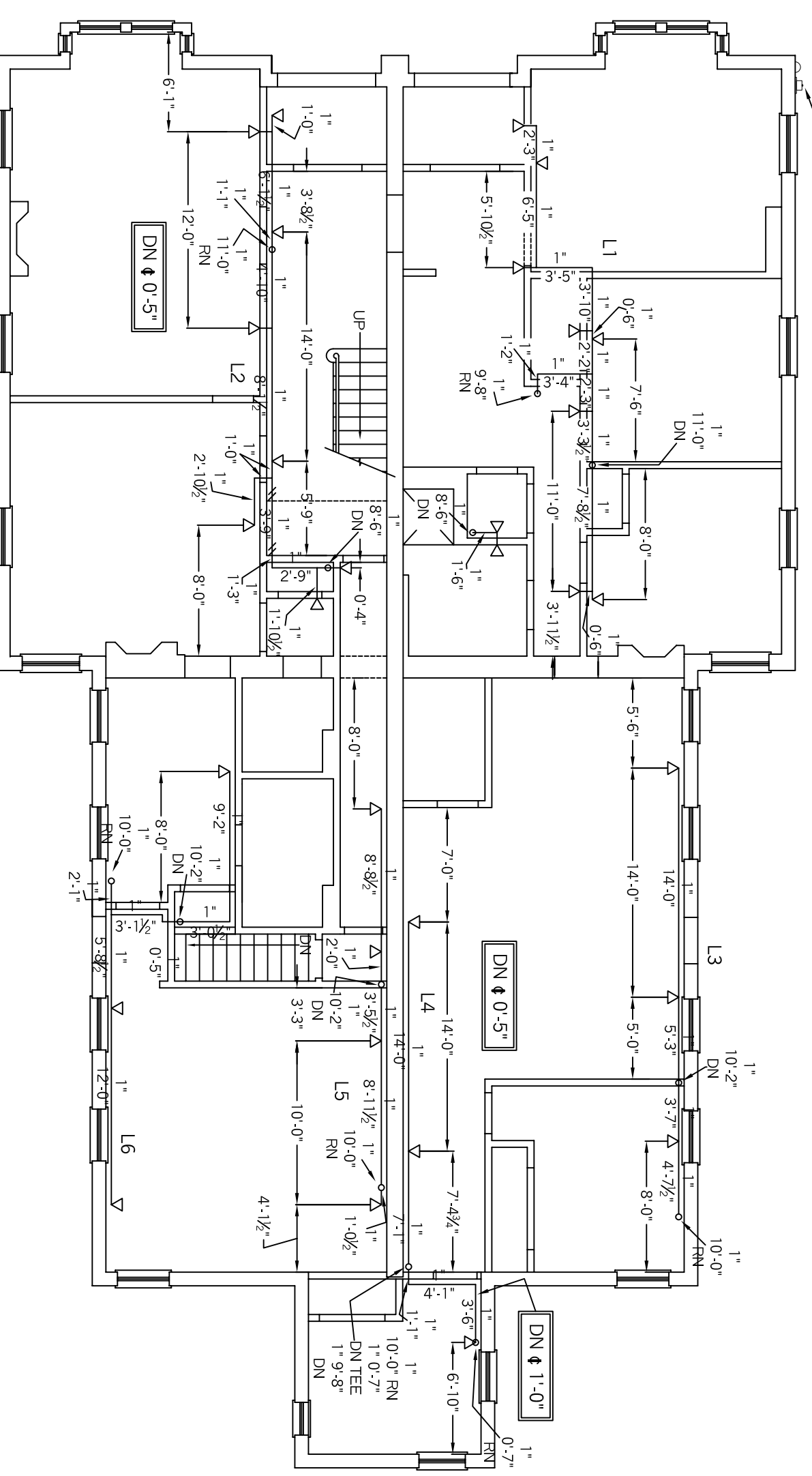
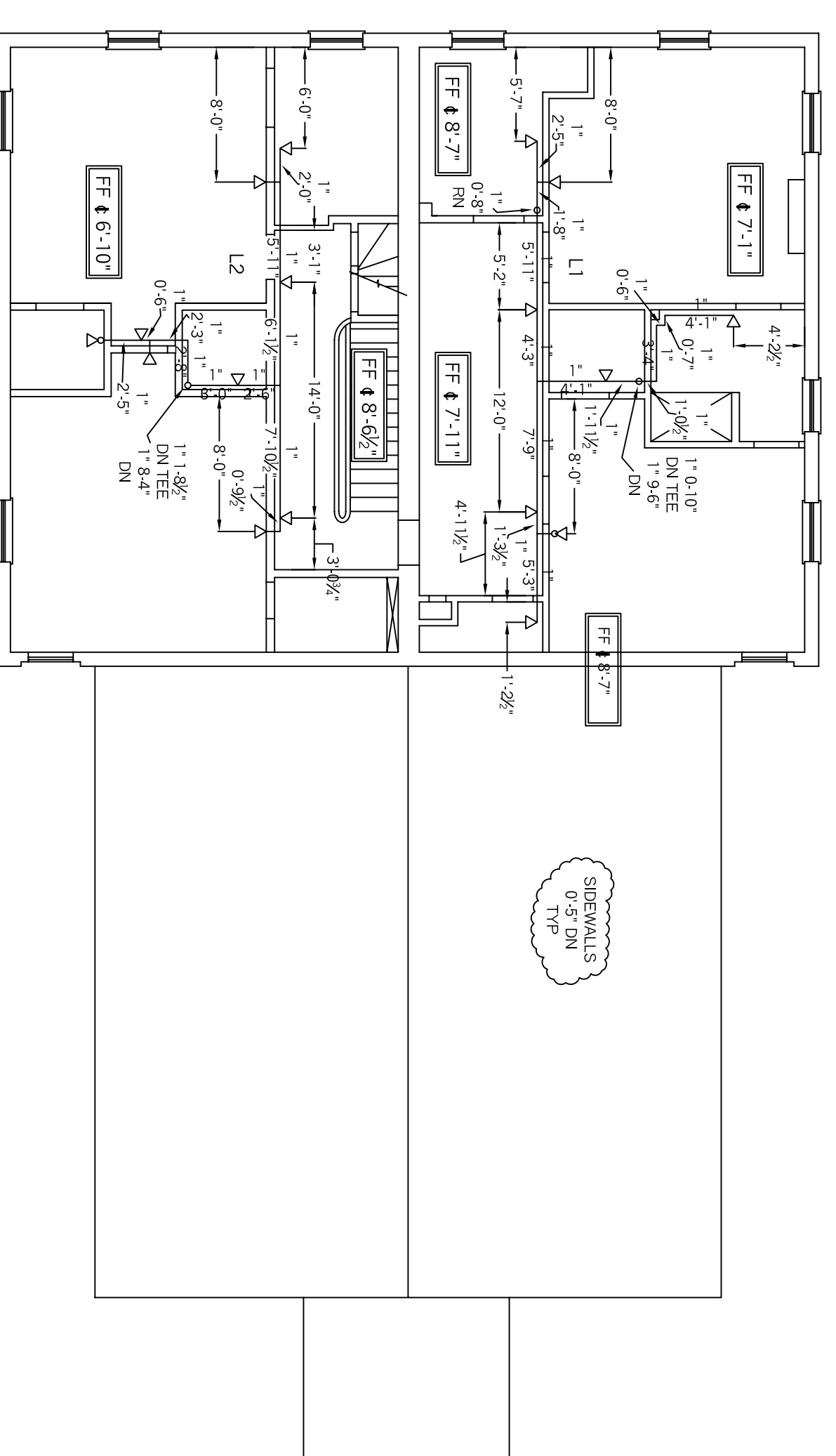


1.10' CIRCULAR FINNED 1" SPRAWL CENTER RISE
PROTECTED BY SPSS ARMED/UNARMED BY ELECTRIMAN

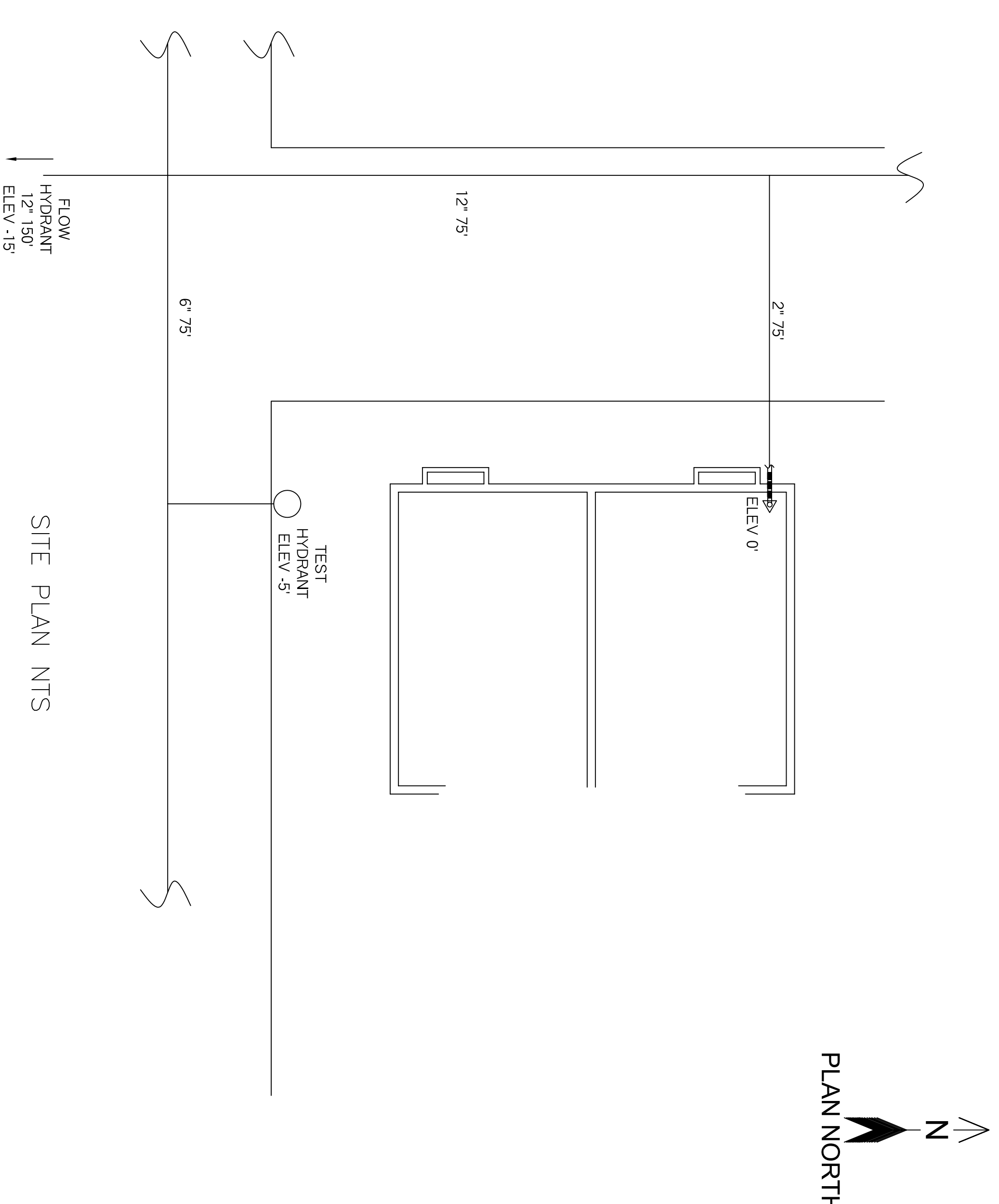


FIRST FLOOR



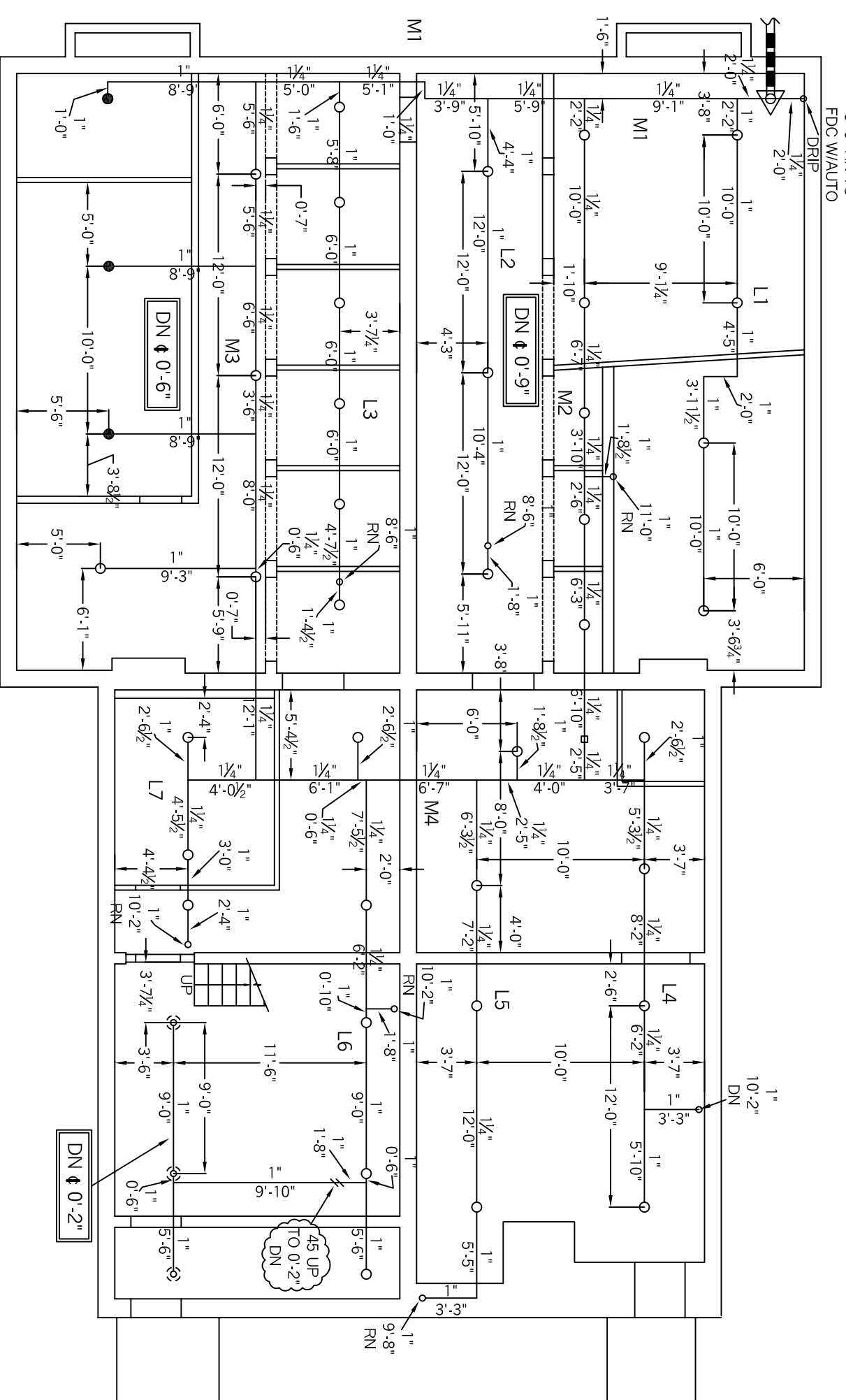
THIRD FLOOR

HYDRAULIC DATA:
SECOND FLOOR
BASIS OF DESIGN NFPA 13R
DENSITY AREA OF COVERAGE 4 SPRINKLERS
.1
TOTAL THREAD TEMP 155
SPRINKLERS 4 1/2" 155
SYSTEM DEMAND AT PUMP OUTLET:
PRESSURE FLOW HOSE 49.091 147.246 100
SAFETY MARGIN: 19.947
OCCUPANCY: RESIDENTIAL

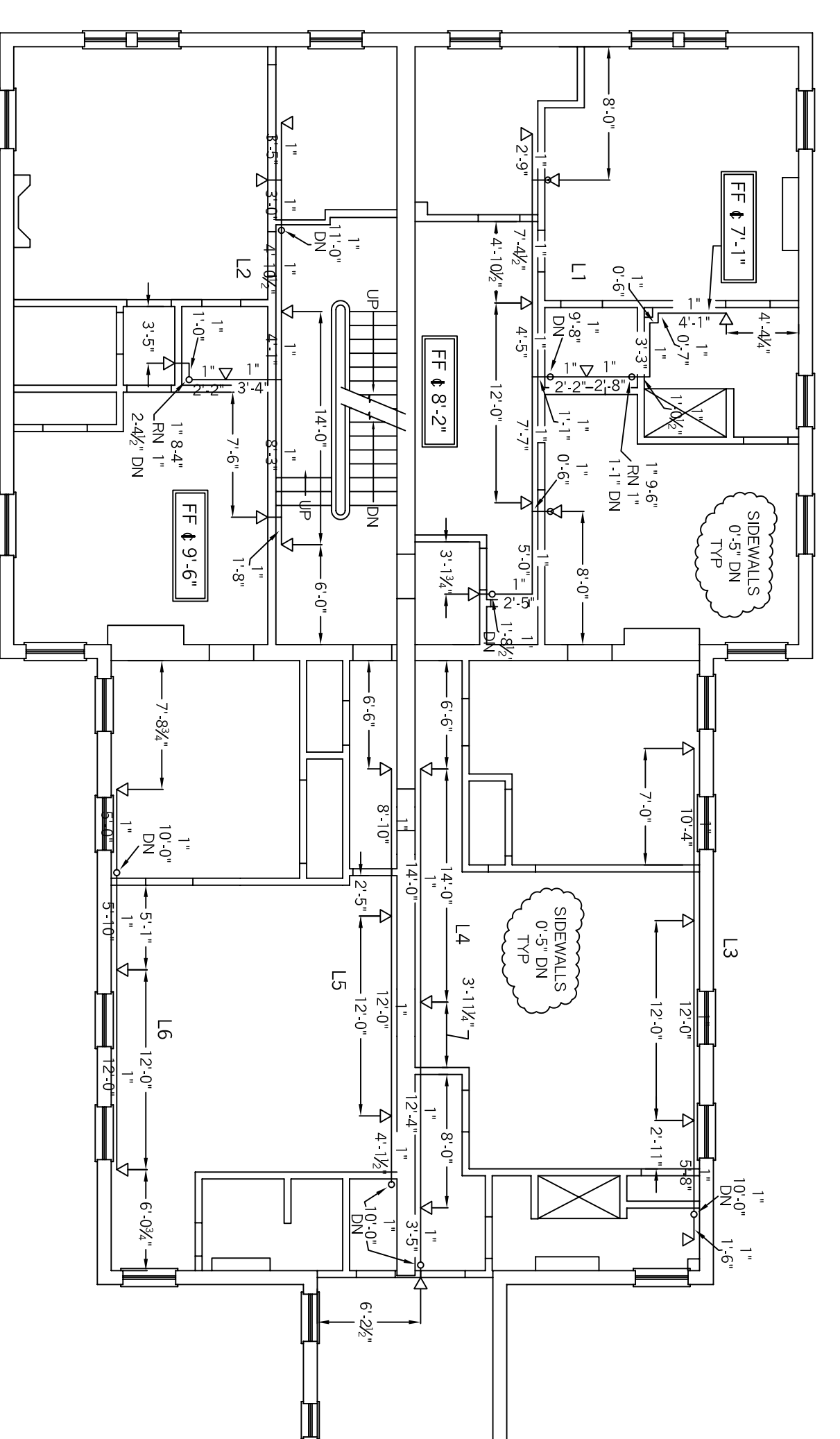


WATER SUPPLY INFO

STATIC = 69
RESIDUAL = 65
FLOW = 1277
DATE = 06-03-13
LOCATION = STATE ST. AND GRAY ST.
SOURCE = PORTLAND WATER DIST.



BASEMENT



SECOND FLOOR

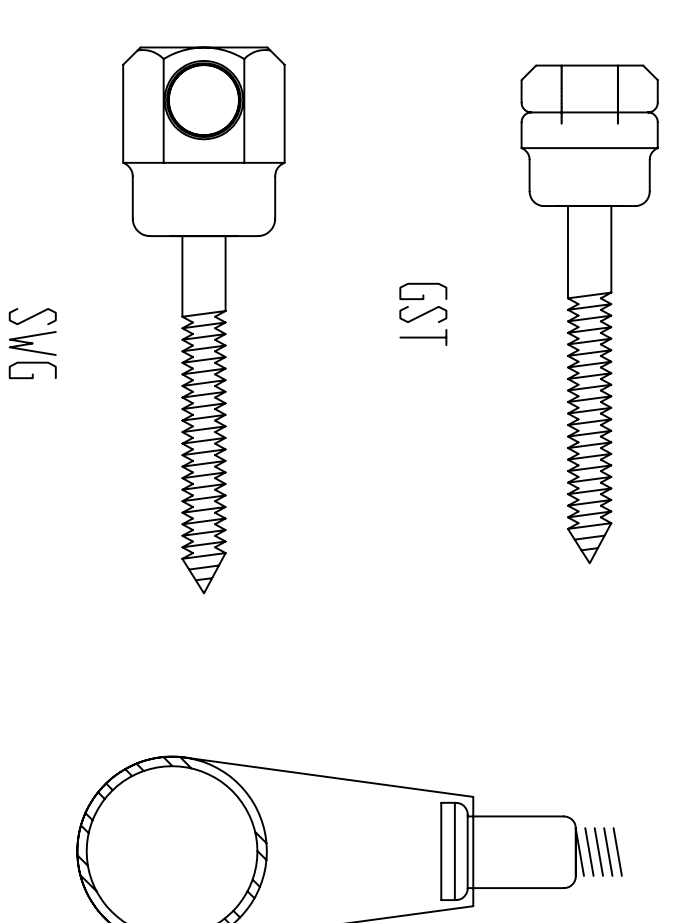
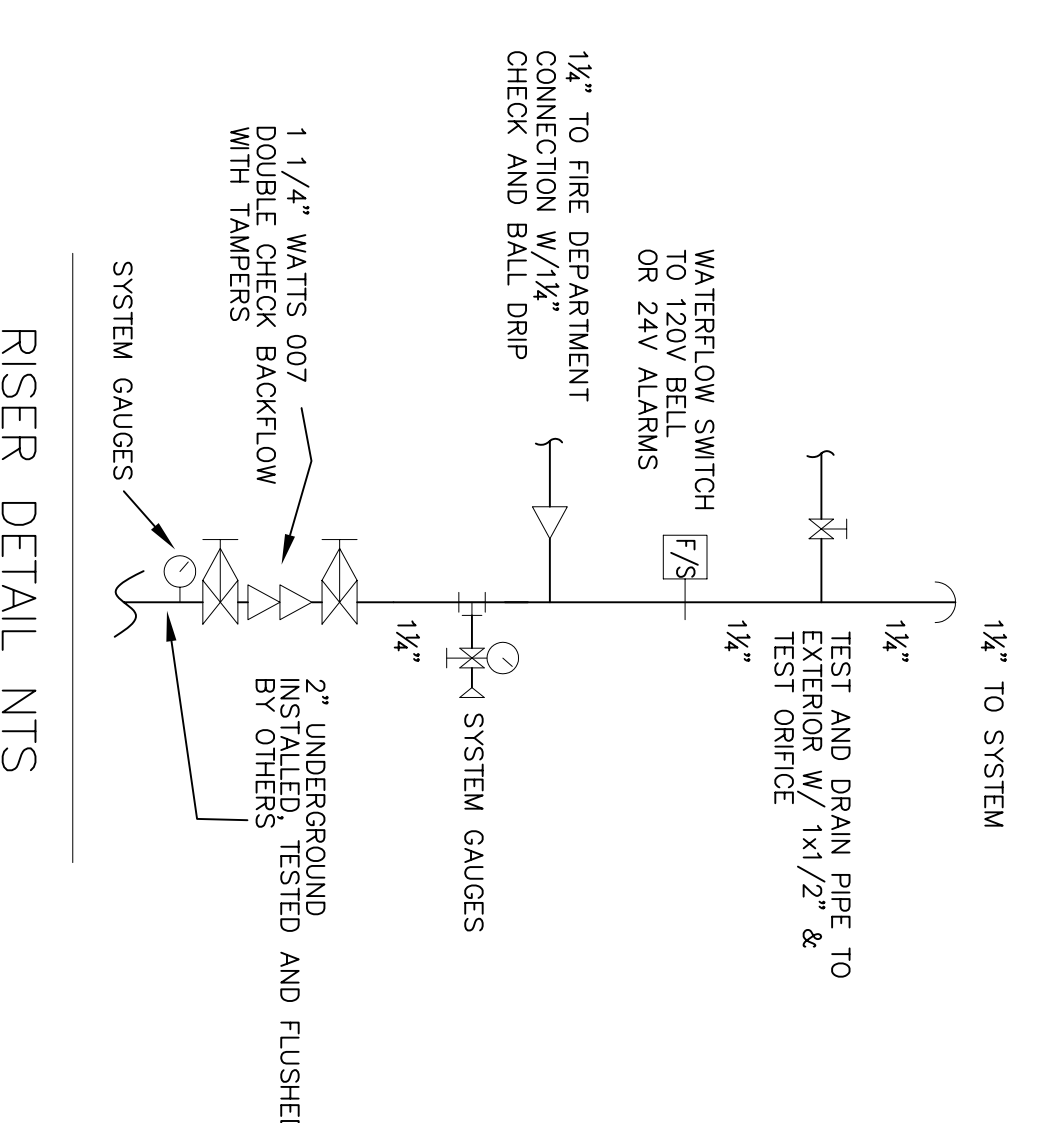
- LEGEND**
- ▷ 155F RES 1/2" WHITE SIDEWALL
 - 155F OR 1/2 BRASS UPRIGHT
 - 155F OR 1/2" WHITE RECESSED PENDENT
 - 200F OR 1/2" BRASS UPRIGHT
 - / HANGER
 - RISE OR DROP NIPPLE
 - VCTAULIC COUPLING

FF K=XX FIN FLR TO CENTERLINE OF PIPE
C K=XX CEILING TO CENTERLINE OF PIPE
TJ K=TOP OF JOIST TO CENTERLINE OF PIPE
BJ K=BOTTOM OF JOIST TO CENTERLINE OF PIPE
BB K=BOTTOM OF BEAM TO CENTERLINE OF PIPE
ELEV K=CIVIL ELEVATION OF CENTERLINE OF PIPE

GENERAL NOTES

RESIDENTIAL SIDEWALL SPRINKLERS TO BE INSTALLED EXPOSED TYPE. CEILING SPRINKLERS ARE T-LA SPOCC FINNED TYPE. CEILING SPRINKLERS ARE T-LA SPOCC EXPOSED WOOD CONSTRUCTION WITH UPRIGHT SPRINKLERS 1" - 6" DN.
ALL DIMENSIONS ARE CENTER TO CENTER U/N.
ALL THREADED PIPE TO BE SCH. 40 BLACK STEEL.
ALL SCREWED FITTINGS TO BE STD. WT. C.I. BLACK U/N.
ALL GROOVED PIPE TO BE SCH 10 BLACK STEEL.

- 3 VIKING WK300
- 200F OR BRASS UPRIGHTS 1/2"x1/2" K=5.6
- 38 VIKING WK300
- 155F OR BRASS UPRIGHTS 1/2"x1/2" K=5.6
- ▷ 75 VIKING WK488
- 155F WHITE RESIDENTIAL SIDEWALLS 1/2"x1/2" K=4.0
- 3 VIKING WK302
- 155F OR BRASS PENDENTS 1/2"x1/2" K=5.6



SAMMY SUPER SCREWS WITH METAL BAND HANGERS TO HANG ALL STEEL PIPING

SYSTEM DESIGN
A WET PIPE SYSTEM OF AUTOMATIC SPRINKLERS TO BE DESIGNED AND INSTALLED PER NFPA 13R
ALL SPRINKLERS TO BE BASED ON LIGHT HAZARD

REVISION NUMBER	DATE	SUBMITTED BY	DATE	TITLE

91 STATE ST. APARTMENTS
91 STATE ST.
PORTLAND, MAINE

C13014

RESIDENTIAL FIRE
PHONE (607) 946-3473 FAX (607) 946-3474
GREENE, MAINE 04236
PROTECTION, LLC

