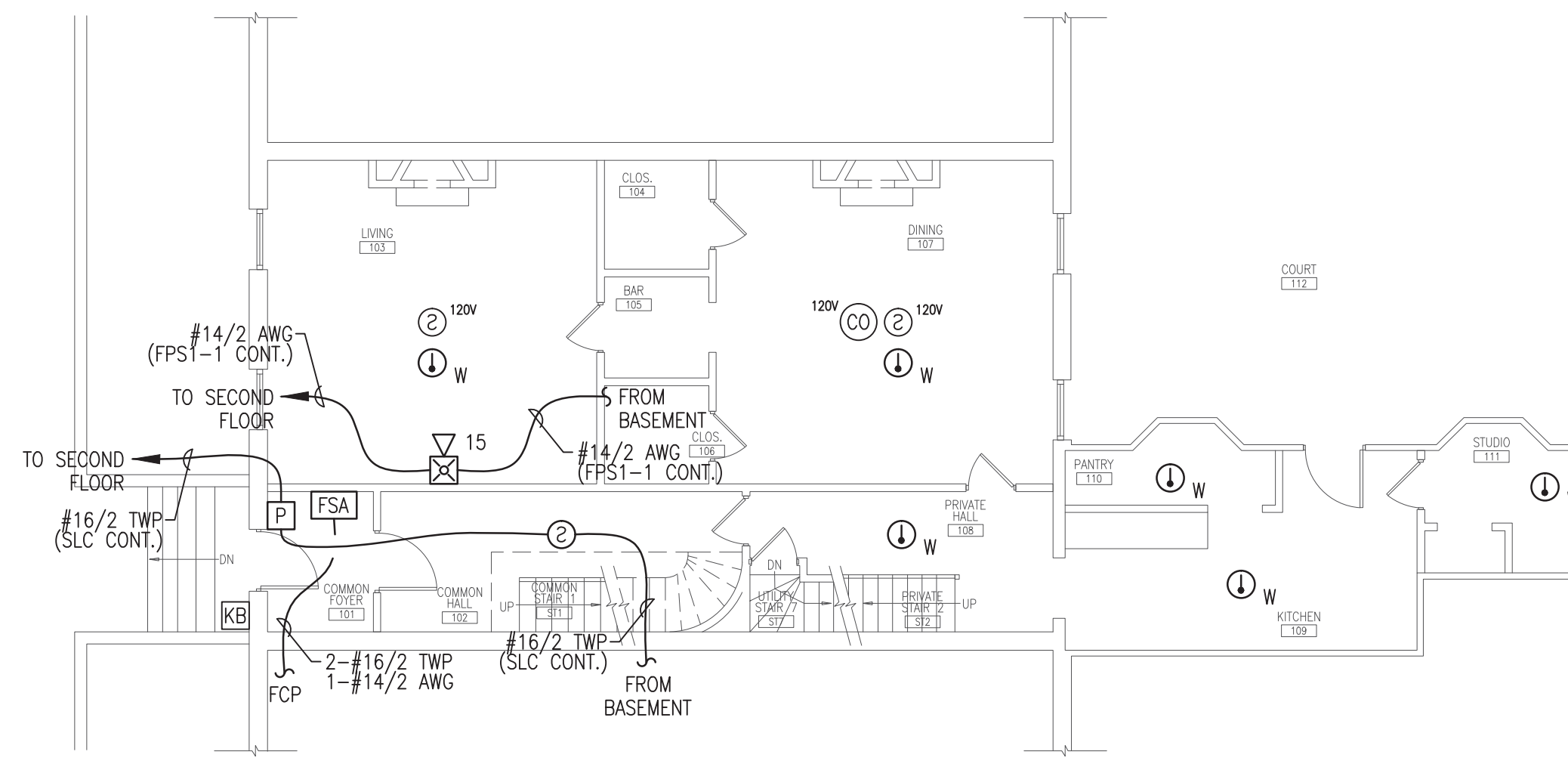
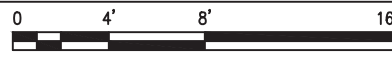


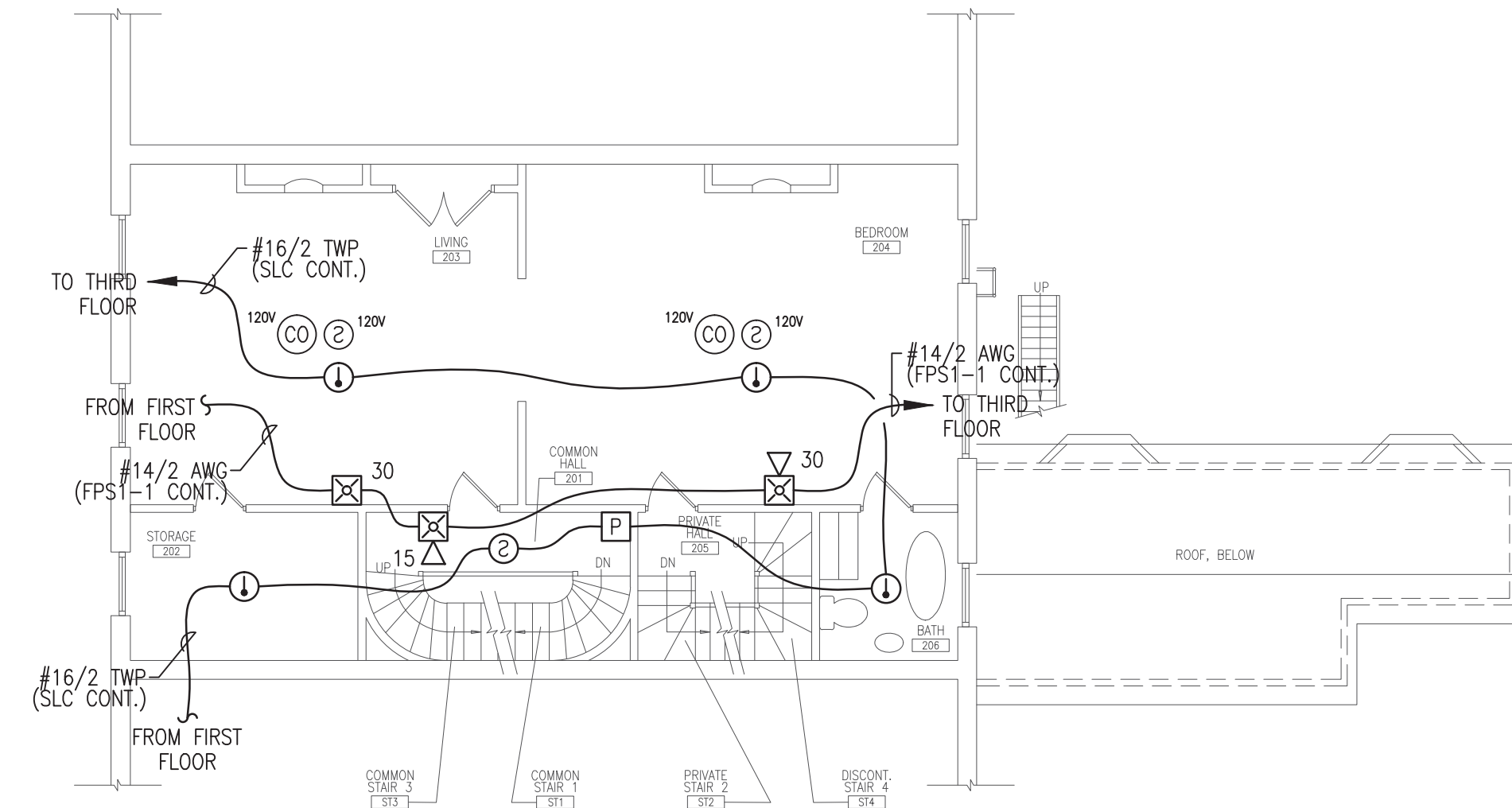
BASEMENT FIRE ALARM PLAN

SCALE: 1/8"=1'-0"



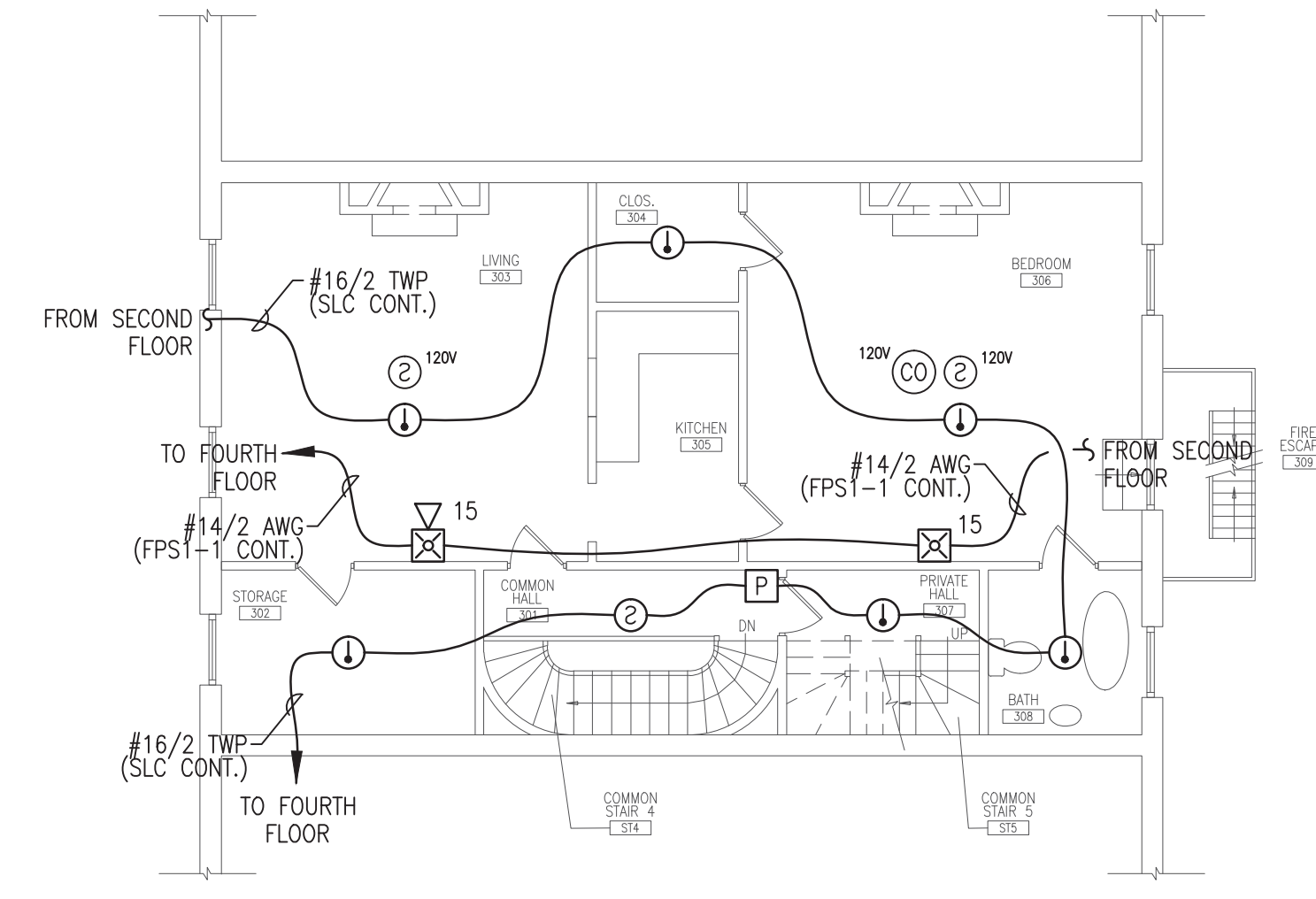
FIRST FLOOR FIRE ALARM PLAN

SCALE: 1/8"=1'-0"



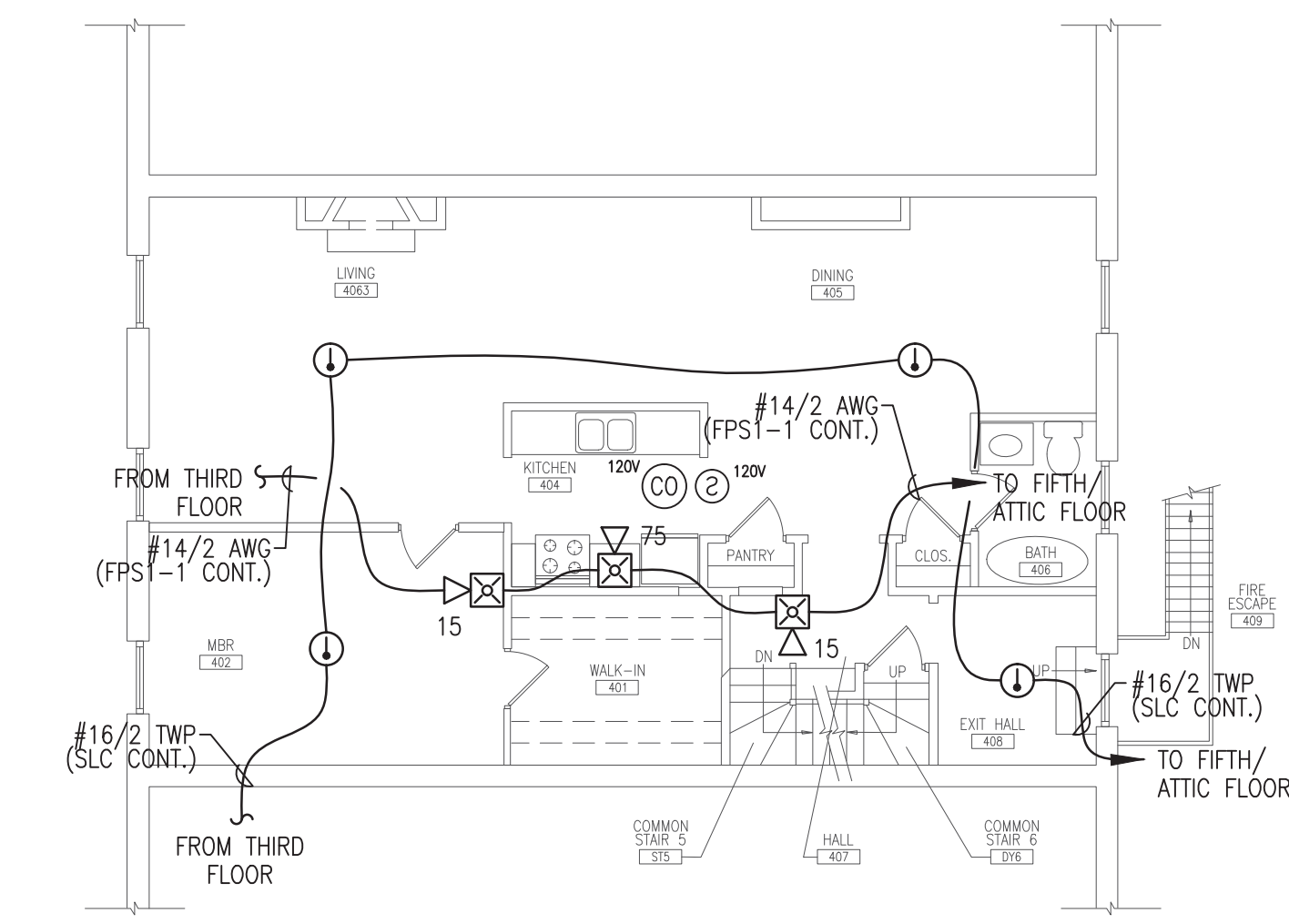
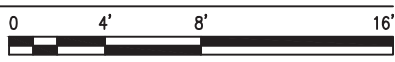
SECOND FLOOR FIRE ALARM PLAN

SCALE: 1/8"=1'-0"



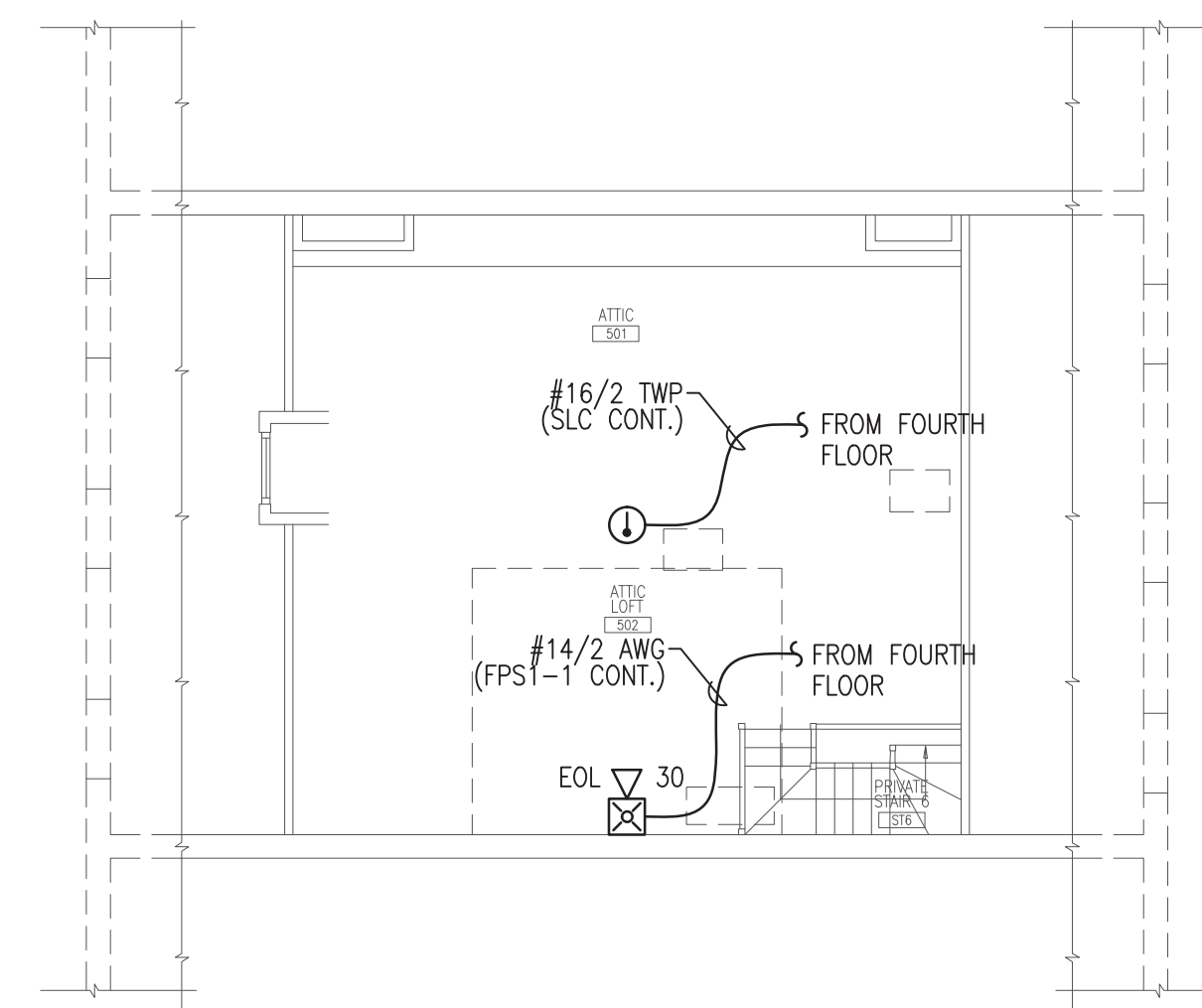
THIRD FLOOR FIRE ALARM PLAN

SCALE: 1/8"=1'-0"



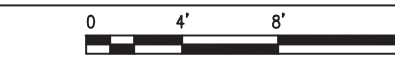
FOURTH FLOOR FIRE ALARM PLAN

SCALE: 1/8"=1'-0"



FIFTH FLOOR/ATTIC FIRE ALARM PLAN

SCALE: 1/8"=1'-0"



SHEET NOTES:

- ◇ ADDRESSABLE SERIAL INTERFACE MODULE(S) PROVIDED TO MONITOR ALL WATER FLOW, PRESSURE SWITCHES, TAMPER SWITCHES AND POST INDICATING VALVES ASSOCIATED WITH THE FIRE SPRINKLER SYSTEM. INSTALLING CONTRACTOR SHALL FIELD VERIFY EXACT MOUNTING, CIRCUITING AND PROGRAMMING REQUIREMENTS. FIELD VERIFY EXACT QUANTITY AND LOCATION(S).

REVISION	DESCRIPTION	DATE
0	ISSUED FOR REVIEW & APPROVAL	4/25/2013

CUNNINGHAM
Security Systems
 10 Princes Point Road, Yarmouth, Maine 04096
 Office: 207.846.3350 • Fax: 207.846.6080

FITZPATRICK ROWHOUSE
106 PARK STREET
PORTLAND, MAINE 04101
FIRE ALARM PLAN

DRAWN	JPB UNICAD JOB #13186
CHECKED	WAYNE B. HAWS NICET N 90496
DATE	2/25/2013
REVISION	0
SCALE	1/8"=1'-0"

shop drawings created by
 5784 W. 4600 St.
 Hesper, UT 84315
 Office: 801.985.0410

UNICAD Inc.
 Fire Alarm Design & Drafting Services

FA-2