

SECTION VIEW
SCALE 1/4"=1'-0"

GENERAL NOTES

- SYSTEM TO BE DESIGNED AND INSTALLED IN ACCORDANCE WITH NFPA-13B AND PIPE AND FITTINGS TO BE COMBINATION OF BLACK STEEL, SCH 40 TYPE AND APPROVED BLACKMASTER PLASTIC CPVC REVISION AND APPROVED TO BE USED WITH THIS STANDARD. ALL HANGERS TO BE SPACED IN ACCORDANCE WITH MANUFACTURER'S RECOMMENDATIONS. MAX SPACING OF STANDARD STEELWALL SPRINKLERS TO BE 14'-6". MAX SPACING OF RESIDENTIAL PENDANT SPRINKLERS TO BE 16'-6". MAX SPACING OF RESIDENTIAL STEELWALL SPRINKLERS TO BE 14'-6". SPRINKLERS OF EACH TYPE SHALL BE PROVIDED PER NFPA 13.
- SPRINKLERS MAY BE OMITTED FROM THE FOLLOWING:
- 1) BATHROOMS WHERE THE AREA DOES NOT EXCEED 55 SQ. FT. AND THE WALLS AND CEILING, INCLUDING BATHING FIXTURES, ARE OF NON-COMBUSTIBLE OR LIMITED COMBUSTIBLE MATERIALS PROVIDING A 15 MINUTE THERMAL BARRIER.
 - 2) CLOTHES CLOSETS, LINEN CLOSETS, AND PANTRIES WITHIN THE DWELLING UNITS WHERE THE AREA OF THE SPACE DOES NOT EXCEED 24 SQ. FT. AND THE LEAST DIMENSION DOES NOT EXCEED 3 FT. AND THE WALLS AND CEILING ARE SURFACED WITH NON-COMBUSTIBLE OR LIMITED COMBUSTIBLE MATERIALS AS DETERMINED BY NFPA.
 - 3) ANY PORCHES, BALCONIES, CORRIDORS, AND STAIRS THAT ARE OPEN AND ATTACHED.
 - 4) ATTICS, PERSONAL EQUIPMENT ROOMS, GARAGE SPACES, FLOOR/CEILING SPACES, ELEVATOR SHAFTS, AND OTHER CONCEALED SPACES THAT ARE NOT USED OR INTENDED FOR LIVING PURPOSES OR STORAGE.
- MAINTENANCE OF THE SPRINKLER SYSTEM IS THE RESPONSIBILITY OF THE OWNER. PROTECTION OF THE SPRINKLER SYSTEM REMAINS THE RESPONSIBILITY OF THE OWNER.

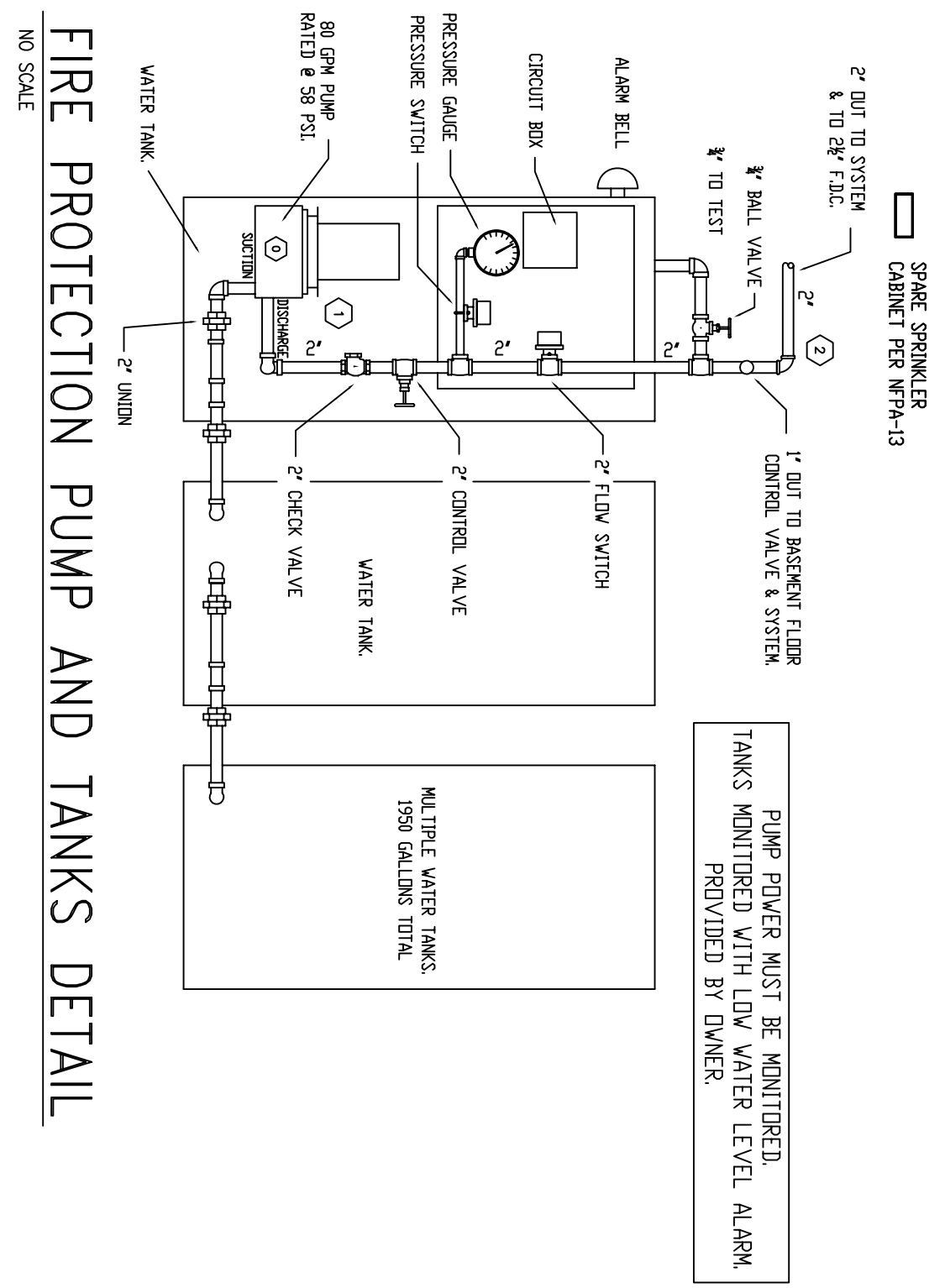
REVISIONS	NOTES	SPRINKLER TYPE	IDENTIFICATION NO.	MFG.	ESC.	MODEL	FINISH	ORIFICE	TEMP.	SYMBOL	QUANT.
TOTAL SPRINKLERS THIS DRAWING											

STANDARD SYMBOLS

- ⊗ - POST INDICATOR VALVE
- ⊙ - KEY VALVE
- ⊕ - FIRE INDICANT
- ⊖ - FIRE DEPT. CONNECTION
- ⊗ - O.S. & Y GATE VALVE
- ⊕ - SWING CHECK VALVE
- ⊖ - NEW UNDERGROUND
- ⊗ - EXIST UNDERGROUND

STANDARD SYMBOLS

- ⊕ - ALARM CHECK VALVE
- ⊖ - RISER W/ALARM VALVE
- ⊗ - RISER W/DRY VALVE
- ⊕ - RISER W/ELEC. FLOW SWITCH
- ⊖ - RISER W/VELUDEF VALVE
- ⊗ - WATER MOTOR BELL
- ⊕ - ELECTRICAL BELL
- ⊖ - TUSHI FIRE DEPT. CONNECTION



FIRE PROTECTION PUMP AND TANKS DETAIL
NO SCALE

INSPECTIONS

1.	
2.	
3.	
4.	

RESPONSIBLE MANAGING SUPERVISOR 5348
CONTRACTOR LICENSE 795

106 PARK STREET
PORTLAND, MAINE 04101

FIRE PROTECTION PLAN

FREEDOM FIRE PROTECTION, INC.
209 OQUAKER RIDGE ROAD
CASCO, MAINE 04015

JOB No.	M0097
DATE	11/19/13
DRAWN BY	MAN
SCALE	AS NOTED
SHEET No.	FP-1 of 3